

4

3

2

1

THIS DRAWING IS UNPUBLISHED.

RELEASED FOR PUBLICATION

© COPYRIGHT

ALL RIGHTS RESERVED.

LOC

DIST


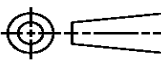
REVISIONS

P	LTR	DESCRIPTION	DATE	DWN	APVD
	A1	ECR-15-007715	20MAY2015	GK	HMR

REPLACED BY OCEAN STYLE APPLICATOR PART
NUMBER 2266758-1

FOR REPLACEMENT PARTS FOR APPLICATOR 1852840
REFER TO ADDITIONAL PAGE(S). SPARE PARTS KIT (IF LISTED)
WILL REMAIN AVAILABLE.

THE REPLACEMENT OCEAN STYLE APPLICATOR HAS THE
SAME TERMINATOR/PRESS INTERFACE AS APPLICATOR
1852840

THIS DRAWING IS A CONTROLLED DOCUMENT.		DWN GOPALAKRISHNA HV		 TE Connectivity			
DIMENSIONS:		CHK RAGHAVENDRA					
		APVD RAGHAVENDRA		NAME SIDE FEED HDM APPLICATOR			
		PRODUCT SPEC					
		APPLICATION SPEC					
MATERIAL		WEIGHT		SIZE A3	CAGE CODE	DRAWING NO C- 1852840	RESTRICTED TO
FINISH		CUSTOMER DRAWING		SCALE		SHEET 1 OF 2	REV A1

8			7		
THIS DRAWING IS UNPUBLISHED			RELEASED FOR PUBLICATION		
20			20		
(C) COPYRIGHT 20 BY TYCO ELECTRONICS CORPORATION. ALL RIGHTS RESERVED					
PART NUMBER	REV	FIRST USED	POWER UNIT	FEED TYPE	DESCRIPTION
1852840-1	A	122500-1	LEADMAKER	POST FEED	CUTS CARRIER
1852840-2	A	565435-5	BENCH MODEL K	PRE FEED	CUTS CARRIER
1852840-3	A	354500-1	BENCH MODEL G	PRE FEED	CUTS CARRIER
1852840-6	A	122500-1	LEADMAKER	POST FEED	CONTINUOUS CARRIER
7-1852840-7	A	-	-	-	SPARE PARTS

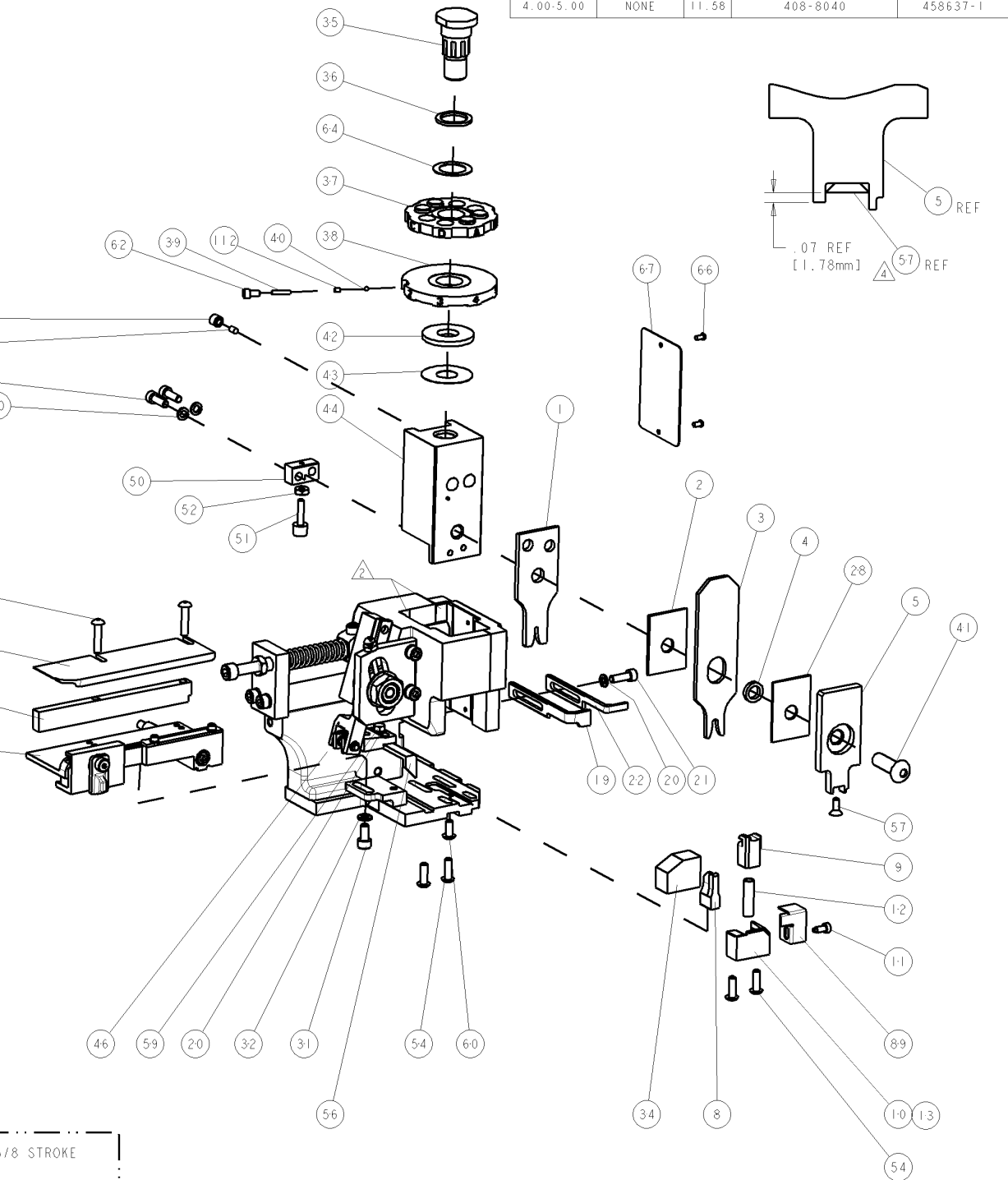
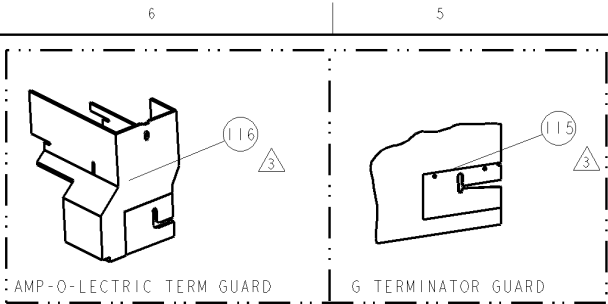
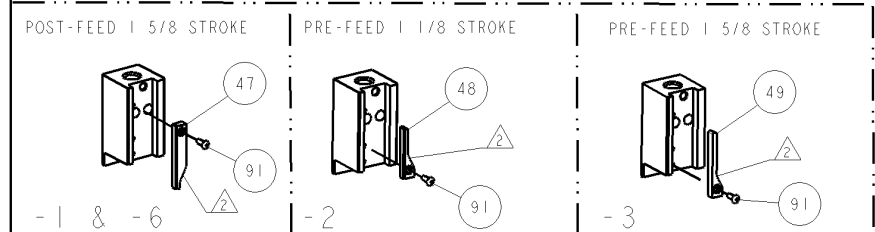
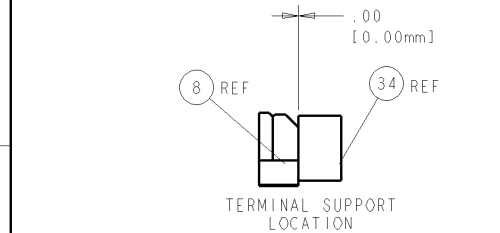
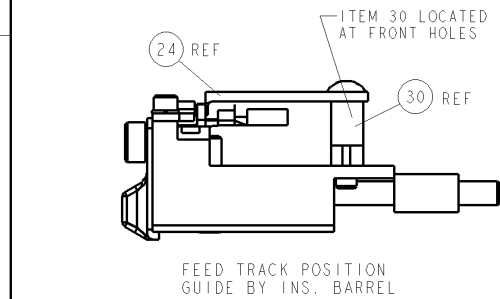
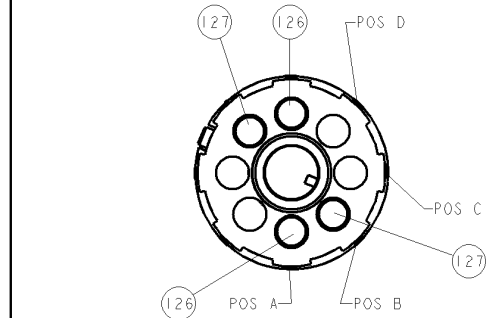
- RECOMMENDED SPARE PARTS

GREASE LIGHTLY

GUARD MUST BE IN PLACE WHEN OPERATING APPLICATOR IN A BENCH MACHINE

APPLY TORQ-SEAL IN ALLEN SOCKET TO FILL HOLE AFTER FLAT HD HAS BEEN ADJUSTED TO CORRECT HEIGHT AT QUALIFICATION. APPLY PN 1-23419-5 LOC-TITE TO THREADS.

THE INSULATION RANGE LISTED IS FOR THE TERMINAL. THE INSULATION DIA RANGE FOR THE SEAL IS Ø2.00-2.40mm.



TERMINAL NAME: TER-RSF-M-RN		SUMITOMO TERMINAL - SUMITOMO CRIMP SPECS	
TE PN	SUMITOMO	CRIMP HEIGHT	WIRE SIZE
1949961	8240-0264	A 1.35mm±.05(.053±.002)	1.25mm ²
-	-	B 1.20mm±.05(.047±.002)	0.75mm ² or 0.85mm ²
-	-	C	-
-	-	D	-
SEAL PN	CRIMP	SIZE	TYPE
1949797	7165-0472	WIRE 1.98mm (.078)	F 1.25-0.75 mm ²
-	-	INSUL 3.94mm (.155)	O Ø4.000 MAX
WIRE STRIP LENGTH	TERM APPL SPEC	FEED	APPLICATOR INSTRUCTIONS
4.00-5.00	NONE	11.58	408-8040
-	-	-	SET UP GAGE 458637-1

LOC		DIST		REV		REVISIONS		DATE		DW		APPD	
A		66		-		-		-		-		-	
				LYR		DESCRIPTION		DATE		DW		APPD	
				A		RELEASED		12/02/09		YY		ND	

Mouser Electronics

Authorized Distributor

Click to View Pricing, Inventory, Delivery & Lifecycle Information:

[TE Connectivity:](#)

[1852840-1](#)