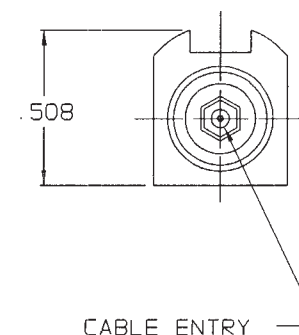
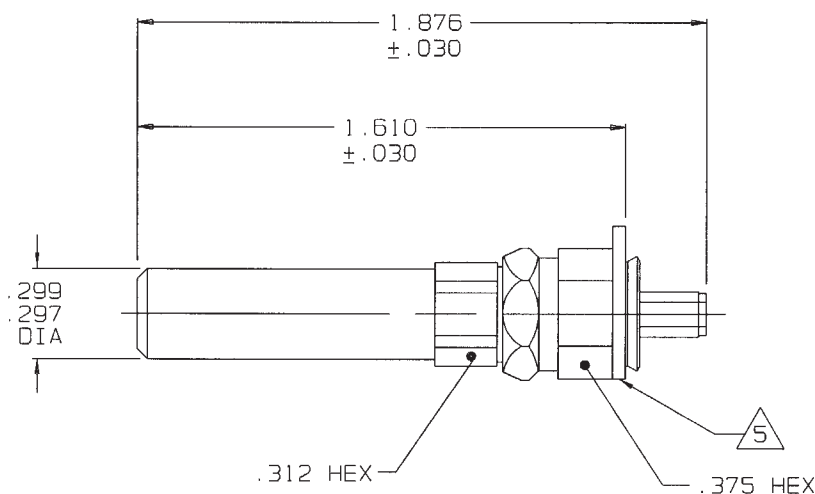


DASH NO	CABLE ACCOMMODATED	A HEX
-009	8218, BELDEN 21-597, ESSEX YR23023, BELDEN	.178
-013A	TCC-75-2 8241F, BELDEN	.255
-014	8212, BELDEN	.255
-025	734A TYPE	
-026	735A TYPE	.178
-027	KS19224L2 LUCENT	

DATA CONTAINED IN THIS DOCUMENT IS
PROPRIETARY TO TROMPETER ELECTRONICS INC.
AND SHALL NOT BE DISCLOSED, COPIED OR USED
FOR PROCUREMENT OR MANUFACTURE WITHOUT
EXPRESS WRITTEN PERMISSION OF TROMPETER
ELECTRONICS INC.

REVISIONS		PL1MWLT	SH 1
REV	DESCRIPTION	DATE	APPROVED
A	PRODUCTION RELEASE		

RED INDICATES ORIGINAL



MODEL NO.	TEI P/N
PL1MWLT	1-0504

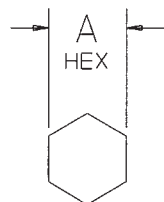
5 PLATE TO ROTATE FREELY AFTER
WITHSTANDING AN AXIAL FORCE OF
25 LBS IN THE DIRECTION OF THE
CABLE ENTRY

4 ASSEMBLE IAW TAI-200 EXCEPT
INSTALL NUT ASSY OVER CABLE
PRIOR TO TERMINATING CONNECTOR

3 SEE TABLE FOR CABLE ACCOMMODATED


2. 75 OHM COAXIAL MINIATURE TOOL
CRIMP PATCH PLUG, IN STANDARD
CRIMP DESIGN, WITH ENTRY BUSHING

1. FINISH: TFS-1B (2G-GOLD)



RECOMMENDED
HEX CRIMP

OUTLINE DRAWING

INTERPRET DRAWING PER MIL-STD-100 DIMENSIONS ARE IN INCHES AND INCLUDE FINISH THICKNESS UNLESS OTHERWISE SPECIFIED		TOL: UNLESS SPECIFIED .XX ± .02 .XXX ± .010 .XXXX ANGLES	 a cinch connectivity solutions brand	
DRAWN PD	DATE 1-10-02	MATERIAL:		
CHECKED		FINISH:	TITLE: 75 OHM PATCH PLUG, STANDARD CRIMP DESIGN	
QUALITY	1-17-02		SIZE A	CAGE CODE 14949
MANUF	1/17/02		DRAWING NO. PL1MWLT	REV. A
APPROVED K. M. G. 1/16/02		DO NOT SCALE DWG	SCALE 2/1	DATE 1-17-02
CAD FILE NO. PL1MWLT.PRT			SHEET 1 OF 1	

NEXT ASSY

Mouser Electronics

Authorized Distributor

Click to View Pricing, Inventory, Delivery & Lifecycle Information:

[Cinch Connectivity Solutions:](#)

[PL1MWLT-026](#)