

CONTACT
3 REQ'D

0.76
[.030]

13.97
[.550]

HOUSING

20.32
[.800]

7.62
[.300]

5

2

3

1 PARTS COMPLY WITH AMP SOLDERABILITY SPECIFICATION 109-11-3.

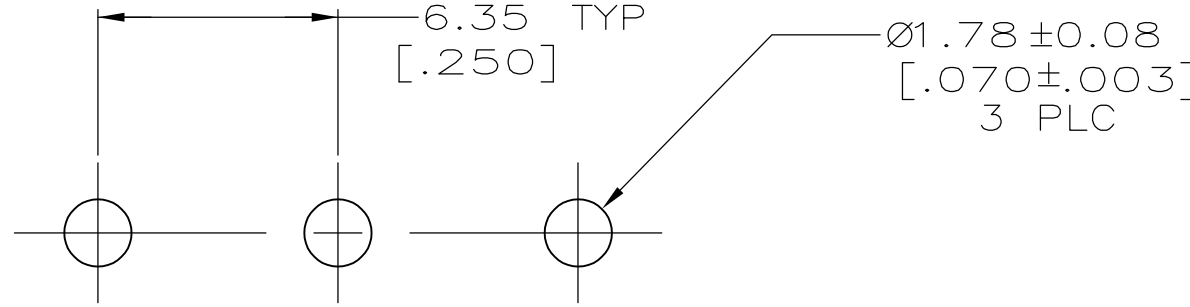
4 DIMENSIONS IN BRACKETS ARE IN INCHES.

5 CIRCUIT IDENTIFICATION CHARACTERS ARE ADJACENT TO THE INDICATED CAVITIES, BUT LOCATION AND ORIENTATION MAY DIFFER FROM PRINT.

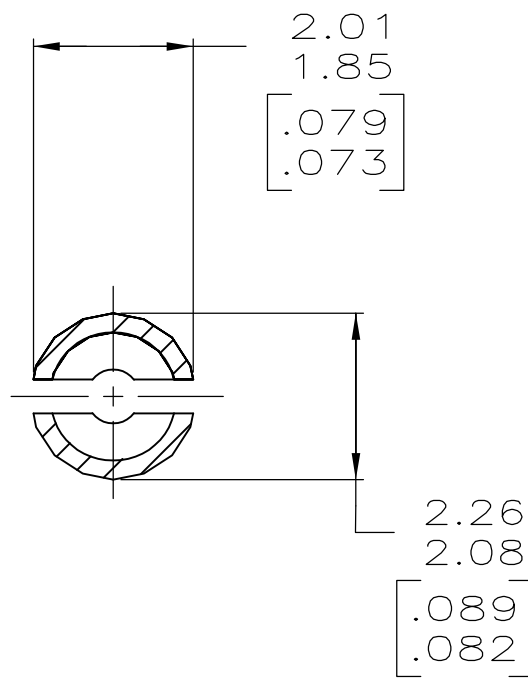
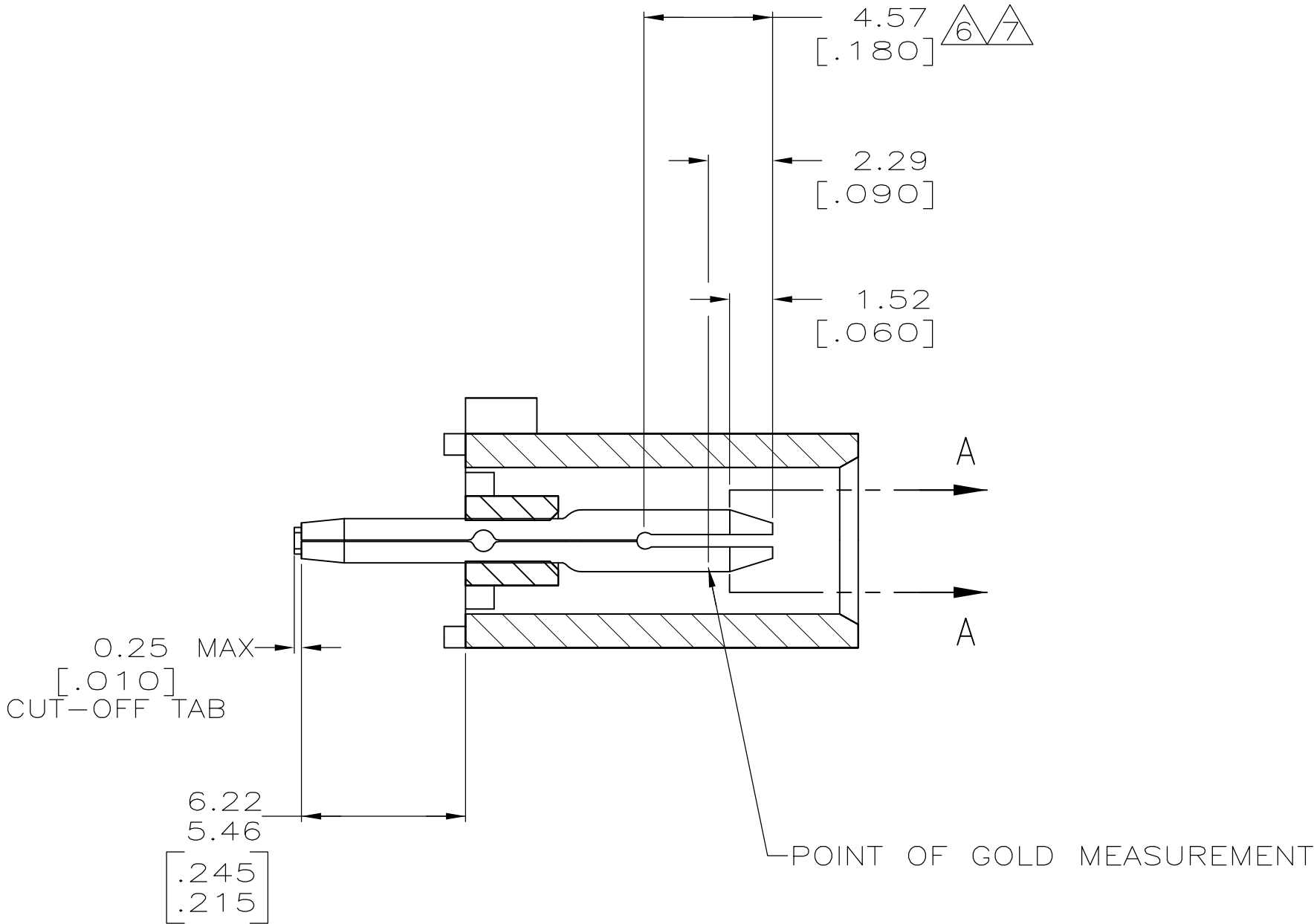
6 CONTACT IS PLATED OVERALL WITH .000050[0.00127] NICKEL, THEN .000030[0.00076] GOLD OVER CONTACT LENGTH INDICATED AND MATTE TIN LEAD ON SOLDER TAIL END.

7 CONTACT IS PLATED OVERALL WITH .000050[0.00127] NICKEL, THEN .000030[0.00076] GOLD OVER CONTACT LENGTH INDICATED AND MATTE TIN ON SOLDER TAIL END.

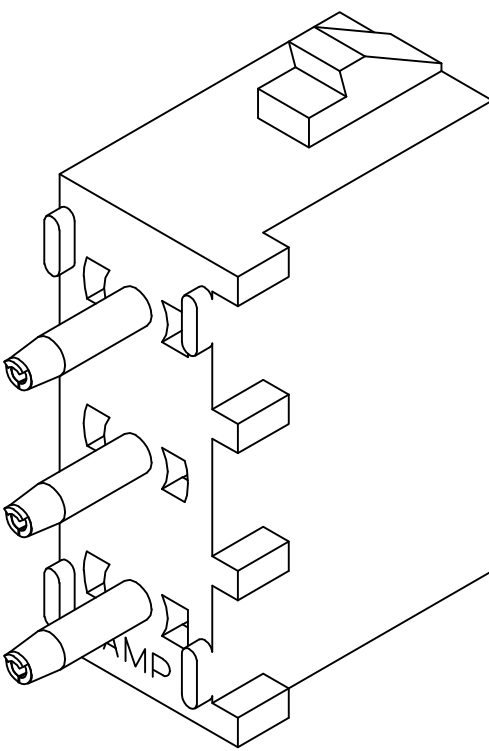
8 SUPERSEDED BY 350583-4



RECOMMENDED MOUNTING HOLE PATTERN
FOR 3.18 [0.125] THICK P.C. BOARD



SECTION A-A
SCALE 10:1



3-DIMENSIONAL MODEL
NTS

| | | | | | | | |
|--|--------------------------|---|---|-----------------------------|--|---|-------------|
| 8 | PHOSPHOR BRONZE, GOLD | | 7 | NYLON,UL94V-2,NATURAL | | 350583-4 | |
| | PHOSPHOR BRONZE, GOLD | | 6 | NYLON,UL94V-2,NATURAL | | 350583-2 | |
| | PHOSPHOR BRONZE, PRE-TIN | | | NYLON,UL94V-2,NATURAL | | 350583-1 | |
| PIN CONTACT MATERIAL AND FINISH | | | | HOUSING MATERIAL | | | PART NUMBER |
| THIS DRAWING IS A CONTROLLED DOCUMENT. | | | | DWN R. VESTAL 2-19-97 | | TE Connectivity | |
| DIMENSIONS: mm [INCHES] | | TOLERANCES UNLESS OTHERWISE SPECIFIED: | | CHK R. SWING 2-19-97 | | | |
| | | APVD | | NAME | | PIN HEADER ASSEMBLY, 3 CIRCUIT, UNIVERSAL MATE-N-LOK™ | |
| | | — | | — | | | |
| | | PRODUCT SPEC | | — | | | |
| | | — | | — | | | |
| | | APPLICATION SPEC | | — | | | |
| | | — | | — | | | |
| MATERIAL SEE TABLE | | FINISH SEE TABLE | | WEIGHT — | | SIZE A1 | |
| | | | | CAGE CODE 00779 | | DRAWING NO 350583 | |
| | | | | CUSTOMER DRAWING | | RESTRICTED TO — | |
| | | | | SCALE 5:1 | | SHEET 1 OF 1 | |
| | | | | REV U1 | | | |

Mouser Electronics

Authorized Distributor

Click to View Pricing, Inventory, Delivery & Lifecycle Information:

[TE Connectivity:](#)

[350583-4](#)