

A

A

## 5. MODULE INFORMATION

- | CONNECTOR | TYCO<br>PART NUMBER | CATALOG<br>MODULE # | QTY | SIZE<br>NO. | CONTACT<br>QTY | MATING PIN                   | MAX. CURRENT<br>(PER CONTACT) | CONTACT<br>SPACING | VOLTAGE<br>RATING* |
|-----------|---------------------|---------------------|-----|-------------|----------------|------------------------------|-------------------------------|--------------------|--------------------|
| SOCKET    | 1766689-1           | FP0200              | 2   | 8           | 2              | 1.25 X 7.00<br>[.049 X .276] | 35 AMPERES                    | 7.50 [2953]        | 250 VOLTS          |

- \*IAW IEC-950

YEAR   WEEK

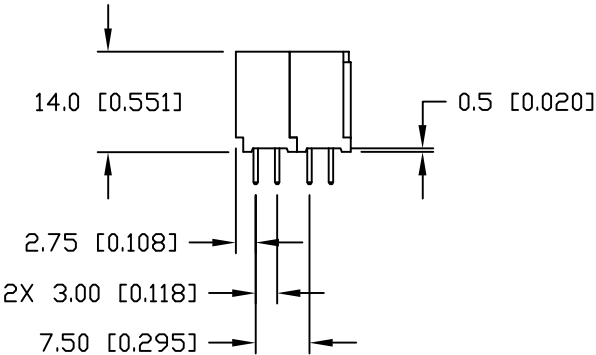
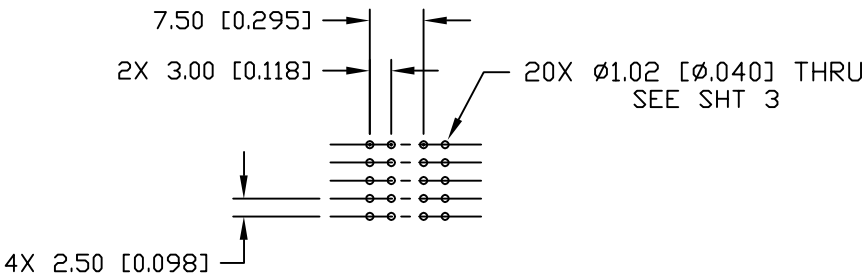
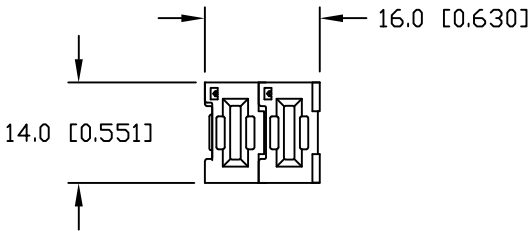
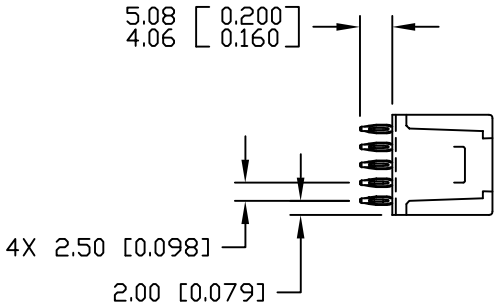
DATE CODE (e.g. 0515)

XXXX

1

This drawing involves proprietary design rights of Tyco Electronics Corporation, and all design, manufacture, reproduction, use and sale rights regarding the same are expressly reserved. It is submitted for a specific purpose and the recipient by accepting this drawing, assumes custody and control and agrees to take reasonable precautions; (a) that this drawing will not be copied and reproduced, in whole or in part, or its contents revealed in any manner, or to any person except to meet the purpose for which it was delivered and (b) that any special features peculiar to this design will not be incorporated in other projects without the expressed written permission of Tyco Electronics Corporation.

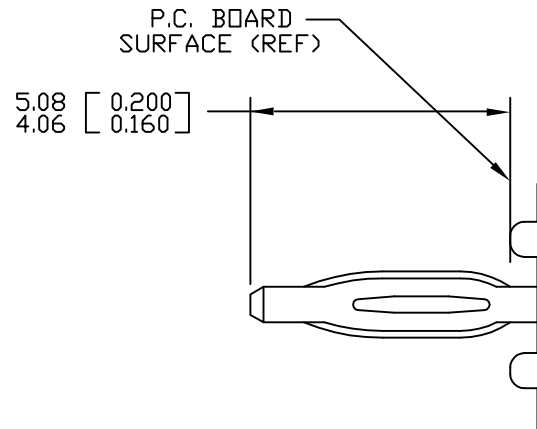
REVISIONS			
EC	REV	DESCRIPTION	DATE
		SEE SHEET 1	



PRINTED CIRCUIT LAYOUT

<div>← MM INCH → OR MM [INCH]</div> <div></div> <div>THIRD ANGLE PROJECTION</div> <div>UNLESS OTHERWISE SPECIFIED DIMENSIONS ARE IN METRIC [INCHES]</div> <div>TOLERANCES</div> <div>ANGLES ± .5°</div> <div>DECIMALS</div> <div>.XX ± .25 [.010]</div> <div>.X ± .5 [.020]</div>	DRAWN R. F. A.	DATE 06/15/05	<div> Tyco Electronics Corporation Menlo Park, Ca 94025</div> <div></div>	
	CHECKED		TITLE  CONNECTOR, SOCKET, STRAIGHT COMPLIANT TAILS, FLATPAQ PN 1766689-1	
	APPROVED			
	APPROVED			
	D. CHAU	06/16/05	SIZE	DWG NUMBER
DCA APPROVED M. ALIM	06/16/05	B	C = 1766689	A
ACAD FILE NUMBER C1766689A.DWG			DWG SCALE 1 = 1	SH 2 OF 3

This drawing involves proprietary design rights of Tyco Electronics Corporation, and all design, manufacture, reproduction, use and sale rights regarding the same are expressly reserved. It is submitted for a specific purpose and the recipient by accepting this drawing, assumes custody and control and agrees to take reasonable precautions; (a) that this drawing will not be copied and reproduced, in whole or in part, or its contents revealed in any manner, or to any person except to meet the purpose for which it was delivered and (b) that any special features peculiar to this design will not be incorporated in other projects without the expressed written permission of Tyco Electronics Corporation.

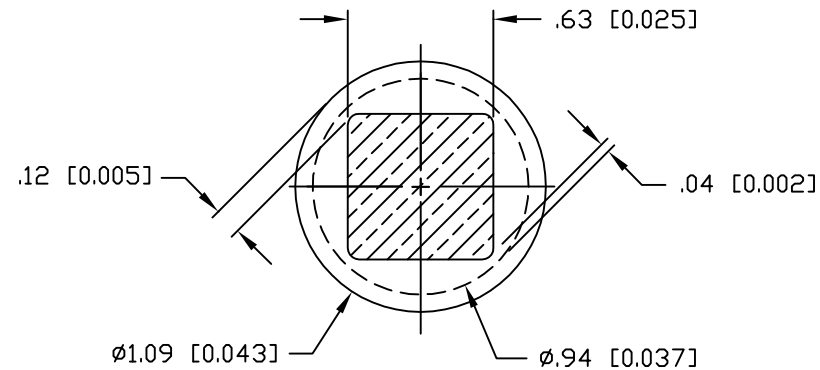


### COMPLIANT PIN DETAIL

#### INSERTION/EXTRACTION FORCES

MAXIMUM PUSH-IN: 133.3N PER PIN  
[30 LBS]

MINIMUM PUSH-OUT: 44.4N PER PIN  
[10 LBS]



### SOLDER TERMINATION AREA

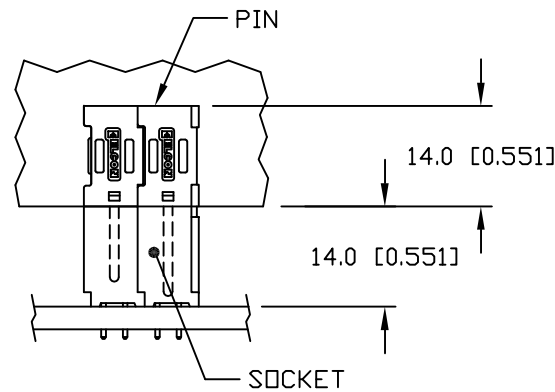
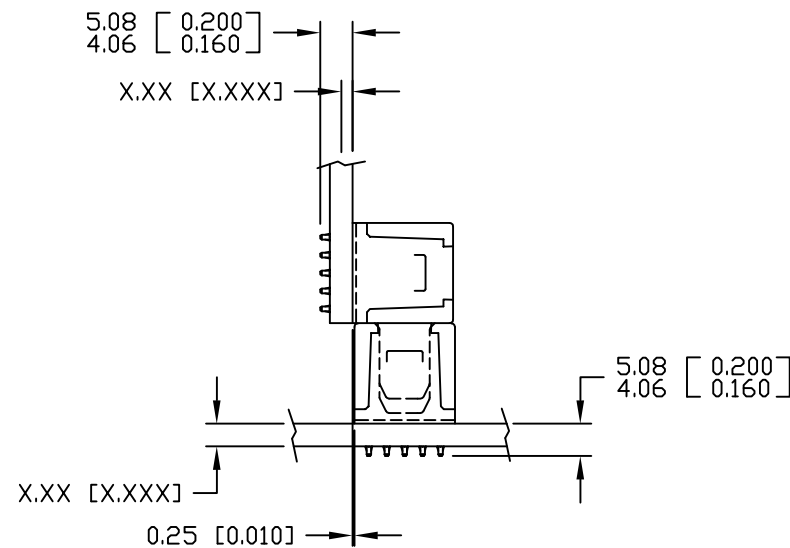
RECOMMENDED PRINTED CIRCUIT HOLE

FINISHED HOLE: Ø1.02 [0.040] ±.08 [0.003]

DRILLED HOLE: Ø1.15 [0.0453] ±.013 [0.0005]

COPPER PLATE: .025 [0.0010] MINIMUM (PER SURFACE)

TIN PLATE: .008 [0.0003] MINIMUM (PER SURFACE)



### MATED CONDITION

<div>MM INCH</div> <div>OR MM [INCH]</div> <div>THIRD ANGLE PROJECTION</div> <div>UNLESS OTHERWISE SPECIFIED DIMENSIONS ARE IN METRIC [INCHES]</div> <div>TOLERANCES</div> <div>ANGLES ± .5°</div> <div>DECIMALS</div> <div>.XX ± .25 [.010]</div> <div>.X ± .5 [.020]</div>	DRAWN R. F. A.	DATE 06/15/05	<div><b>tyco</b> Tyco Electronics Corporation <b>Electronics</b> Menlo Park, Ca 94025</div> <div><b>ELCON</b></div>	
	CHECKED		TITLE	
	APPROVED		USER INFORMATION COMPLIANT TAIL TERMINATION AND MATED CONDITION	
	APPROVED D. CHAU	06/16/05	SIZE B	DWG NUMBER C = 1766689
M. ALIM		06/16/05		
ACAD FILE NUMBER C1766689A.DWG		DWG SCALE 1 = 1		SH 3 OF 3

# Mouser Electronics

Authorized Distributor

Click to View Pricing, Inventory, Delivery & Lifecycle Information:

[TE Connectivity:](#)

[1766689-1](#)