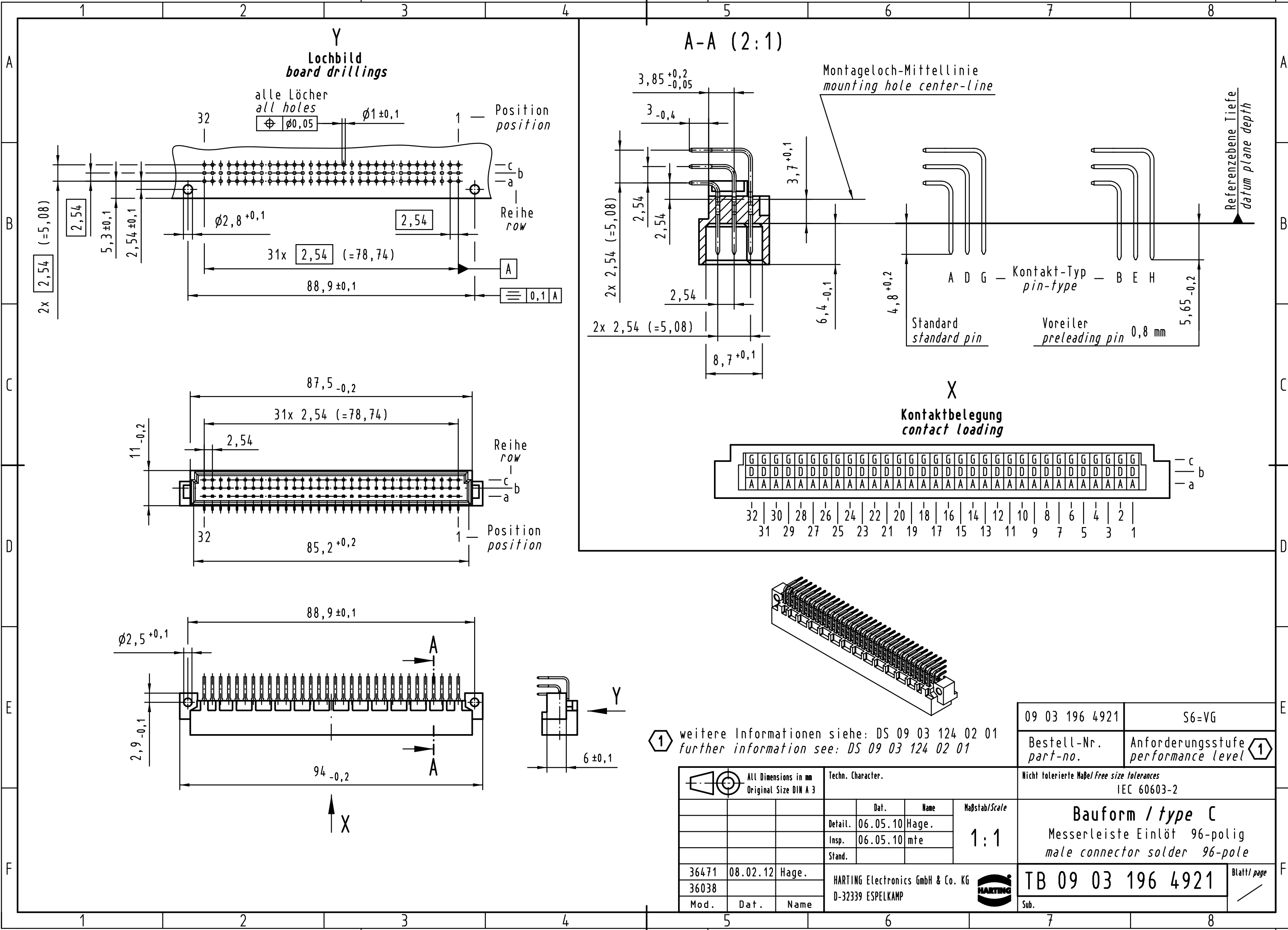


Alle Rechte vorbehalten/ All rights reserved



Y
Lochbild
board drillings

A-A (2:1)

X
Kontaktbelegung
contact loading

alle Löcher
all holes
 $\oplus \phi 0,05$ $\phi 1 \pm 0,1$

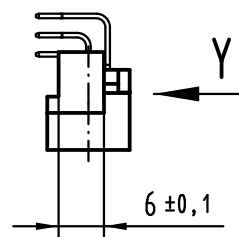
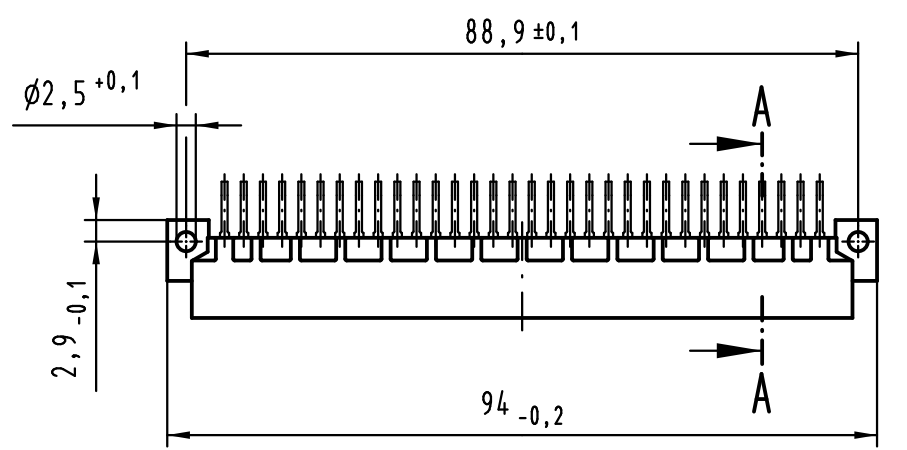
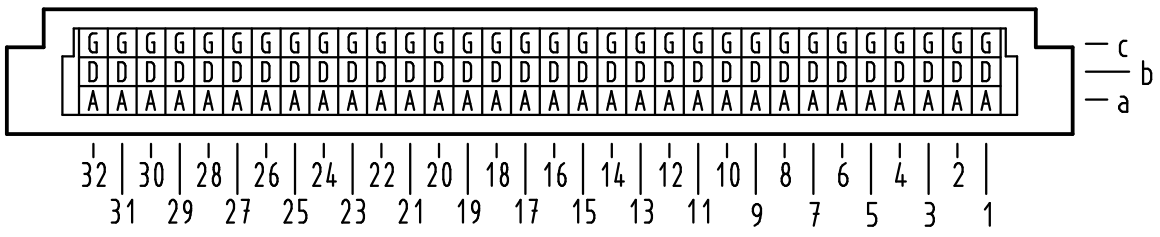
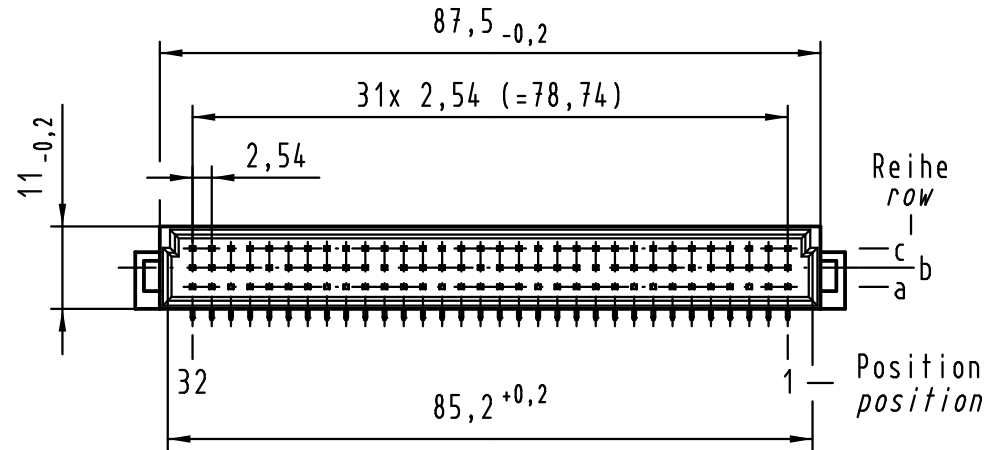
Montageloch-Mittellinie
mounting hole center-line

Referenzebene Tiefe
datum plane depth

A D G — Kontakt-Typ
pin-type — B E H

Standard
standard pin

Voreiler
preleading pin 0,8 mm



① weitere Informationen siehe: DS 09 03 124 02 01
further information see: DS 09 03 124 02 01

09 03 196 4921	S6=VG
Bestell-Nr. part-no.	Anforderungsstufe performance level ①

All Dimensions in mm Original Size DIN A 3		Techn. Character.			Nicht tolerierte Maßel Free size tolerances IEC 60603-2
		Dat.	Name	Maßstab/Scale	
		Detail.	06.05.10 Hage.	1:1	
		Insp.	06.05.10 mte		
		Stand.			
36471	08.02.12	Hage.	HARTING Electronics GmbH & Co. KG		TB 09 03 196 4921
36038			D-32339 ESPELKAMP		
Mod.	Dat.	Name			

Bauform / type C		Blatt / page
Messerleiste Einlöt 96-polig male connector solder 96-pole		
Sub.		

Mouser Electronics

Authorized Distributor

Click to View Pricing, Inventory, Delivery & Lifecycle Information:

[HARTING:](#)

[09031964921](#)