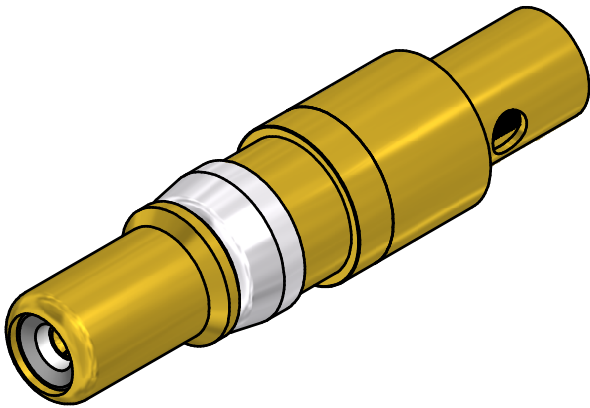
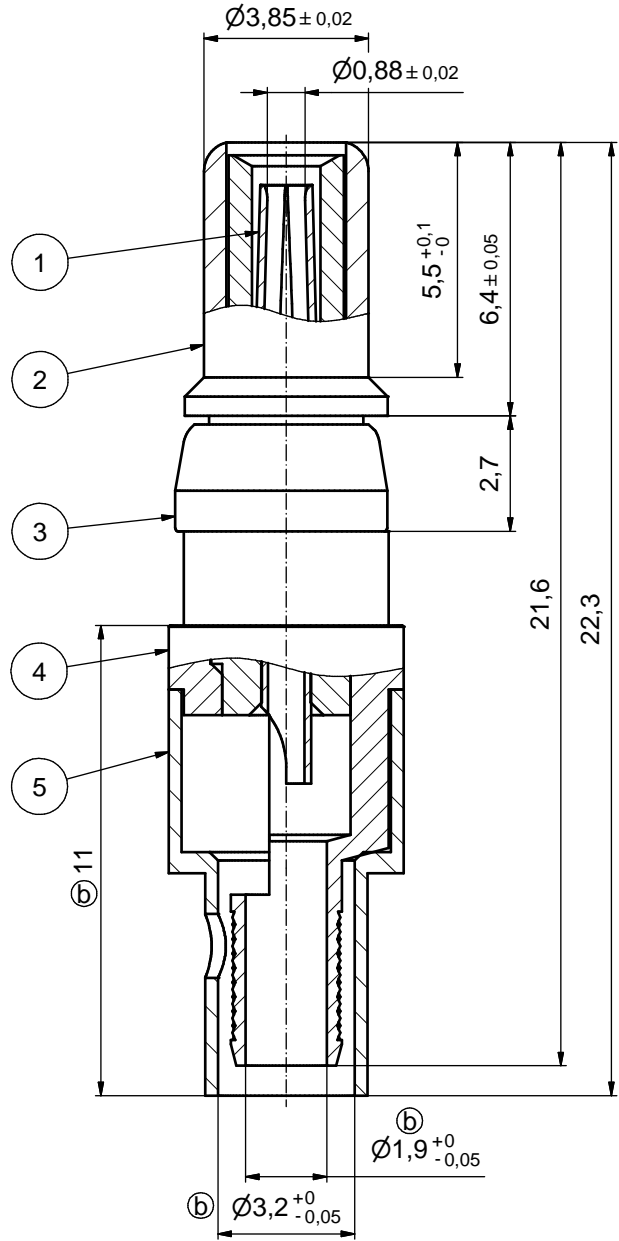
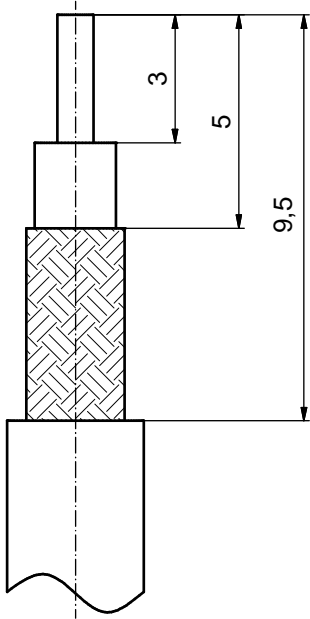


⑥ STRIPPING DIMENSIONS



⑥ **ASSEMBLY TOOLING:**

1. CENTER CONTACT:
SOLDERED
2. OUTER CONDUCTOR:
SOLDERED OR CRIMPED
USE CRIMP TOOL: 360X10519X
WITH TOOL INSERT: 360X11019X
INSERT CAVITY B: HEX 3.25 / .128"

⑥

Part no.	Finish Pos.1	Finish Pos.2	Finish Pos.3	Finish Pos. 4/5
131J20029X	50µin HARD GOLD over min. 50µin NICKEL	30µin HARD GOLD over min. 50µin NICKEL	NICKEL PLATED	GOLD FLASH over NICKEL
131A20029X	GOLD FLASH over NICKEL	GOLD FLASH over NICKEL	NICKEL PLATED	GOLD FLASH over NICKEL

THIS DRAWING MAY NOT BE COPIED OR REPRODUCED IN ANY WAY, AND MAY NOT BE PASSED ON TO A THIRD PARTY WITHOUT WRITTEN PERMISSION. OWNERSHIP AND COPYRIGHT OF CONEC GmbH DO NOT ALTER CAD DRAWING BY HAND	tolerance		dim. in mm		scale: 8:1
					material: COPPER ALLOY (Pos. 1-5)
	date	name	title:		
	drawn 29.08.05	Lehmenkühler	COAXIAL CONTACT PLUG 50 OHM		
	appd. 30.08.05	Mickenbecker	inner conductor for solder termination outer conductor for solder or crimp termination		
norm		dwg no:		DIN-A3	
d-old		13K2IAPA		sh: 1	
6 x b	Ä4538	16.11.12	Lehmen	part no: see table	
a	Original				
rev.	description	date	name	CONEC®	

Directive 2002/95/EC RoHS compliant

Mouser Electronics

Authorized Distributor

Click to View Pricing, Inventory, Delivery & Lifecycle Information:

[CONEC:](#)

[131J20029X](#)