

THIS DRAWING IS UNPUBLISHED.

RELEASED FOR PUBLICATION

ALL RIGHTS RESERVED.

LOC	DIST	REVISIONS				
P	LTR	DESCRIPTION		DATE	DWN	APVD
	C	REVISED PER ECO-11-023039		21FEB12	KH	MS

MATERIAL:  
HOUSING: THERMOPLASTIC, UL94V-2, BLACK.  
TERMINALS: BRASS, BRIGHT TIN PLATE.  
SCREWS: 6-32, STEEL, PLATED .0002 MIN ZINC W/  
CLEAR CHROMATE COATING. UNLESS OTHERWISE  
SPECIFIED.

ELECTRICAL:  
MAXIMUM CURRENT: 20A.  
OPERATING VOLTAGE: 600V.  
WIRE RANGE: 12-22 AWG.

ENVIRONMENTAL:  
OPERATING TEMP.: -60°C TO +105°C

- 1

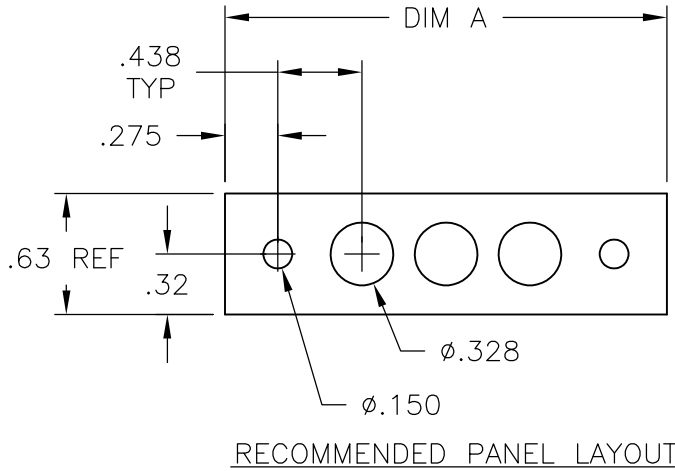
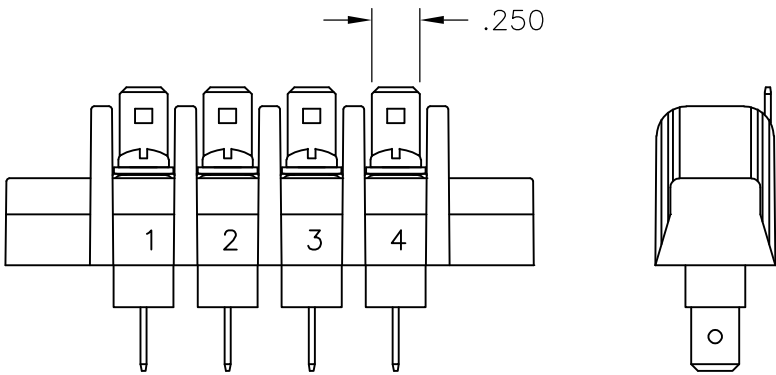
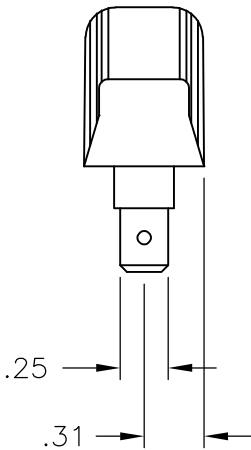
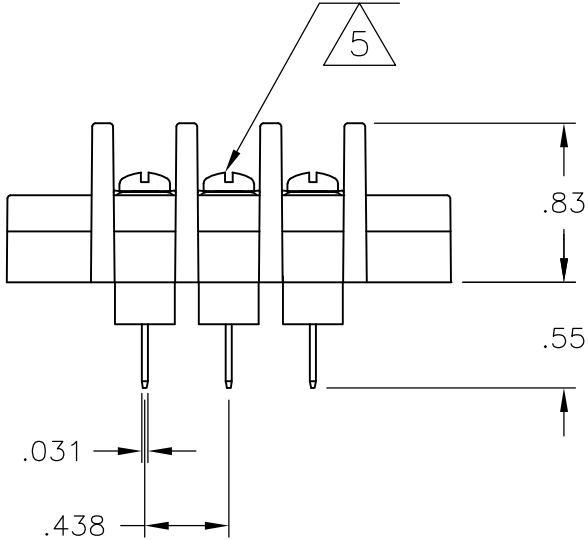
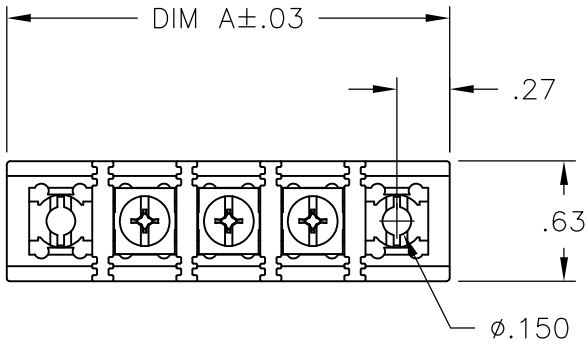
SCREWS ARE STAINLESS STEEL.
- 2

PRELIMINARY PART NUMBER.
- 3

SCREWS: NICKEL PLATED BRASS BINDING HEAD.
- 4

OBSOLETE PARTS: OBSOLETE CIS STREAMLINING PER D.RENAUD/D.SINISI
- 5

ALL SCREWS BOTTOMED, TORQUE 2 TO 4 IN-LBS



4	OBSOLETE	9.750	20	SSB7TF200501	<del>9-1437416-1</del>
		9.750	20	SSB7TG200501	2-1546977-0
1		9.312	19	SSB7TG190503	3-1546561-6
		9.312	19	SSB7TG190501	1437417-3
1		8.875	18	SSB7TG180503	3-1546561-5
		8.875	18	SSB7TG180501	1-1546977-8
		8.437	17	SSB7TG170501	1-1546977-7
		8.000	16	SSB7TG160501	1-1546977-6
		7.562	15	SSB7TG150501	1-1546977-5
		7.125	14	SSB7TF140501	9-1437416-0
		7.125	14	SSB7TG140501	1-1546977-4
		6.687	13	SSB7TG130501	1-1546977-3
		6.250	12	SSB7TG120501	1-1546977-2
		5.812	11	SSB7TG110501	1-1546977-1
		5.375	10	SSB7TG100501	1437417-1
		4.937	9	SSB7TG090501	1546977-9
		4.500	8	SSB7TG080501	1546977-8
		4.062	7	SSB7TG070501	1546977-7
4	OBSOLETE	3.625	6	SSB7TF060501	<del>8-1437416-6</del>
		3.625	6	SSB7TG060501	1546977-6
4	OBSOLETE	3.187	5	SSB7TF050501	<del>1-1546561-4</del>
		3.187	5	SSB7TG050501	1546977-5
	OBSOLETE	2.750	4	SSB7TF040501	<del>2-1546977-7</del>
2		2.750	4	SSB7TF042511	2-1546977-6
		2.750	4	SSB7TG040501	1546977-4
		2.312	3	SSB7TG030501	1546977-3
1		1.875	2	SSB7TG020503	9-1437416-3
		1.875	2	SSB7TG020501	1546561-8
		1.437	1	SSB7TG010501	5-1437417-6
		DIM A	NO. OF POS.	CATALOG NUMBER	PART NUMBER

THIS DRAWING IS A CONTROLLED DOCUMENT.		DWN S SCHLGEL 6/3/04	TE Connectivity		
		CHK S YODER 6/3/04			
		APVD S YODER 6/3/04	NAME		
		PRODUCT SPEC	SSB7TGXX0501		
		APPLICATION SPEC			
		WEIGHT	SIZE A3	CAGE CODE C	DRAWING NO C-8-1437416-6
		CUSTOMER DRAWING		SCALE NTS	SHEET 1 OF 2
				REV C	

4

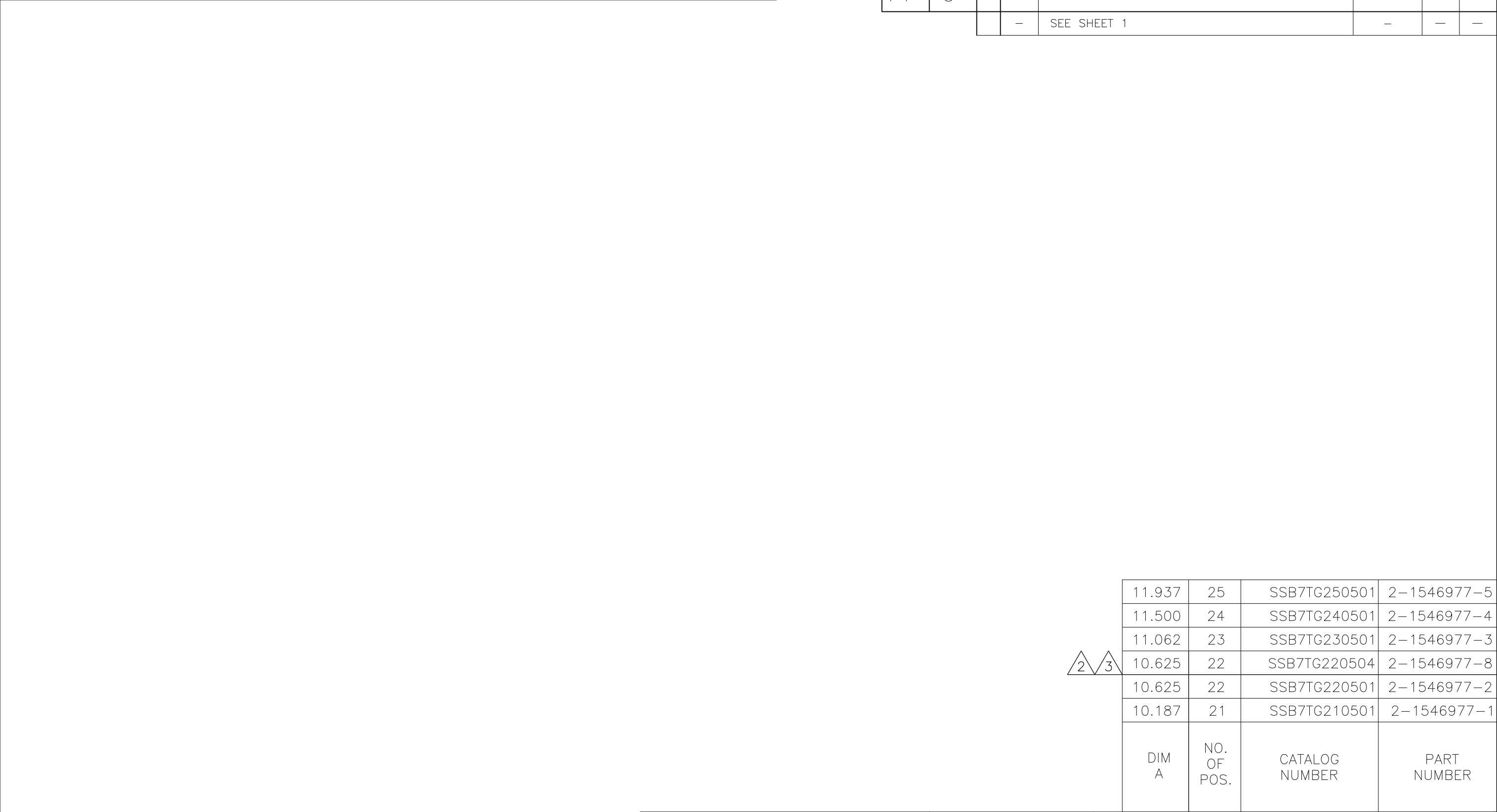
3

2


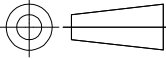
1

THIS DRAWING IS UNPUBLISHED.	RELEASED FOR PUBLICATION - , - .
© COPYRIGHT - By - ALL RIGHTS RESERVED.	

LOC FT	DIST 0	REVISIONS				
P	LTR	DESCRIPTION	DATE	DWN	APVD	
	-	SEE SHEET 1	-	-	-	



11.937	25	SSB7TG250501	2-1546977-5
11.500	24	SSB7TG240501	2-1546977-4
11.062	23	SSB7TG230501	2-1546977-3
10.625	22	SSB7TG220504	2-1546977-8
10.625	22	SSB7TG220501	2-1546977-2
10.187	21	SSB7TG210501	2-1546977-1
DIM A	NO. OF POS.	CATALOG NUMBER	PART NUMBER

THIS DRAWING IS A CONTROLLED DOCUMENT.		DWN S SCHLGEL 6/3/04	 TE Connectivity				
DIMENSIONS: INCHES		CHK S YODER 6/3/04					
	TOLERANCES UNLESS OTHERWISE SPECIFIED:		APVD S YODER 6/3/04	NAME  SSB7TGXX0501			
	0 PLC ± -		PRODUCT SPEC				
	1 PLC ± -		APPLICATION SPEC				
	2 PLC ± .02		WEIGHT -	SIZE A3	CAGE CODE 00779	DRAWING NO C-8-1437416-6	RESTRICTED TO -
3 PLC ± .010		CUSTOMER DRAWING		SCALE NTS	SHEET 2 OF 2	REV C	
4 PLC ± -							
ANGLES ± 1°							
MATERIAL -							
FINISH -							

# Mouser Electronics

Authorized Distributor

Click to View Pricing, Inventory, Delivery & Lifecycle Information:

[TE Connectivity:](#)

[SSB7TF060102](#) [SSB7TG100501](#)