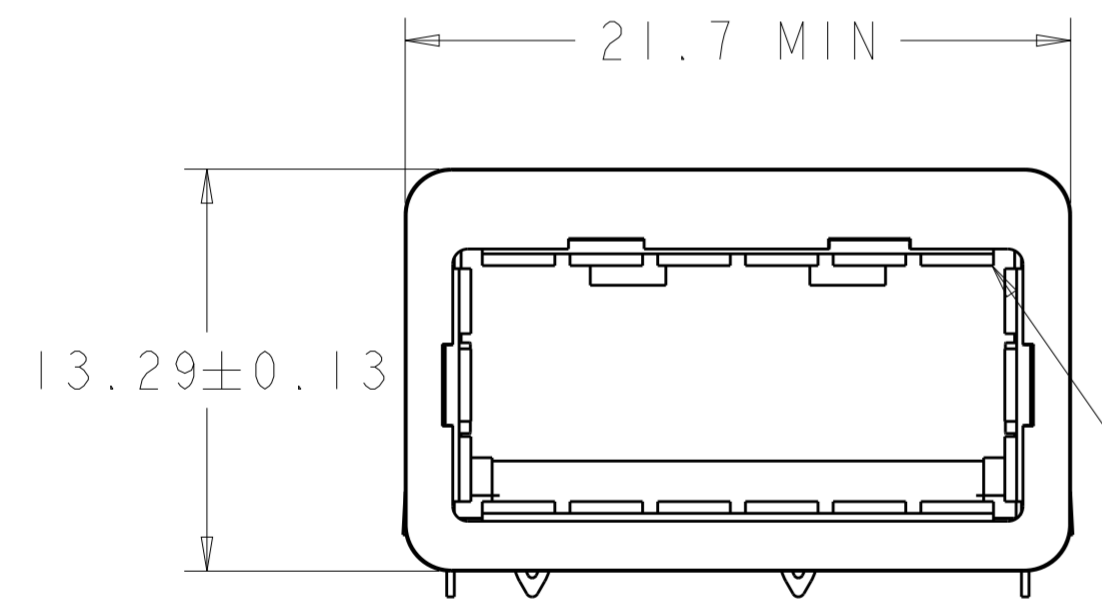
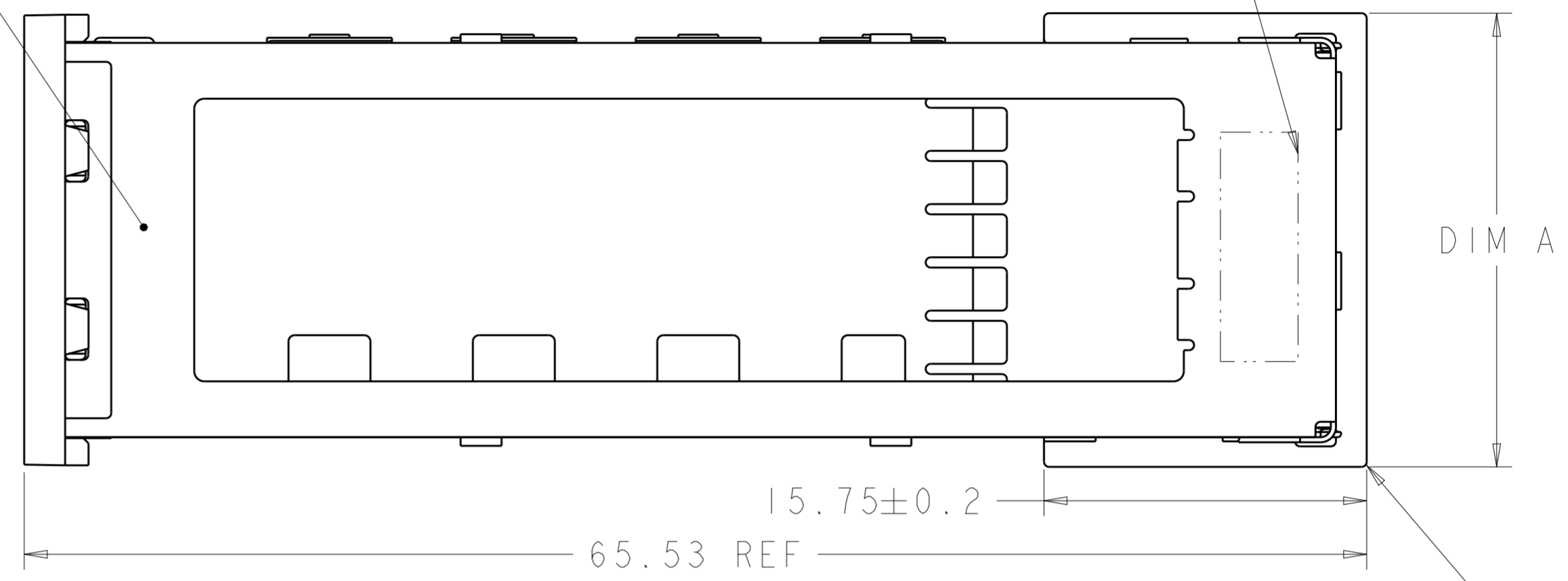


THIS DRAWING IS UNPUBLISHED. RELEASED FOR PUBLICATION 20
 © COPYRIGHT 20 BY - TE CONNECTIVITY ALL RIGHTS RESERVED.

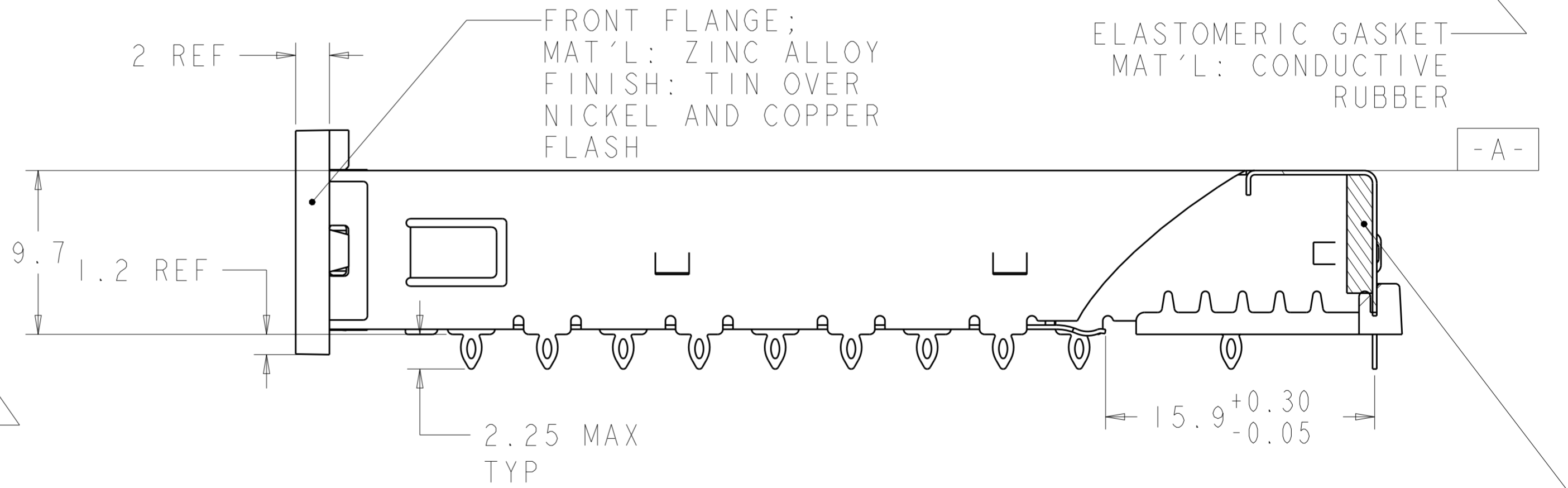
LOC	DIST	REVISIONS			
P	LTR	DESCRIPTION	DATE	DWN	APVD
ES	00	A	01NOV2016	PP	SH

XFP CAGE
 MAT'L: COPPER ALLOY
 FINISH: TIN

DATE CODE APPROXIMATE LOCATION



FRONT EMI GASKET;
 MAT'L: COPPER ALLOY
 FINISH: TIN



XFP CAGE REAR EMI GASKET;
 MAT'L: CONDUCTIVE FOAM

- ① MATES WITH XFP-MSA COMPLIANT TRANSCEIVERS.
- ② DATUM **-X-** AND **-Y-** ESTABLISHED BY CUSTOMER.
- ③ DATUM **-A-** IS TOP SURFACE OF HOST BOARD.
- ④ INDICATED SURFACES TO BE CONDUCTIVE AND CONNECTED TO CHASSIS GROUND.

CUSTOMERIZED	23 MAX	YES	2170435-3
GENERAL	23 MAX	YES	2170435-1
EMI SPRING	DIM A	DATE CODE	PART NUMBER

THIS DRAWING IS A CONTROLLED DOCUMENT.

DIMENSIONS:	TOLERANCES UNLESS OTHERWISE SPECIFIED:	DWN PETER PAN 01-Nov-16	TE Connectivity
mm	0 PLC ±0.25	CHK JASON YANG 01-Nov-16	
	1 PLC ±0.25	APVD ALEX CAI 01-Nov-16	
	2 PLC ±0.20	PRODUCT SPEC 108-2127	
	3 PLC ±	APPLICATION SPEC 114-13096	NAME CAGE ASSEMBLY, 10 GIGABIT, XFP
	4 PLC ±	WEIGHT -	SIZE CAGE CODE DRAWING NO RESTRICTED TO
	ANGLES ±5°	CUSTOMER DRAWING	A200779 C-2170435
	FINISH	SCALE 1:1	SHEET 1 OF 3 REV A

4

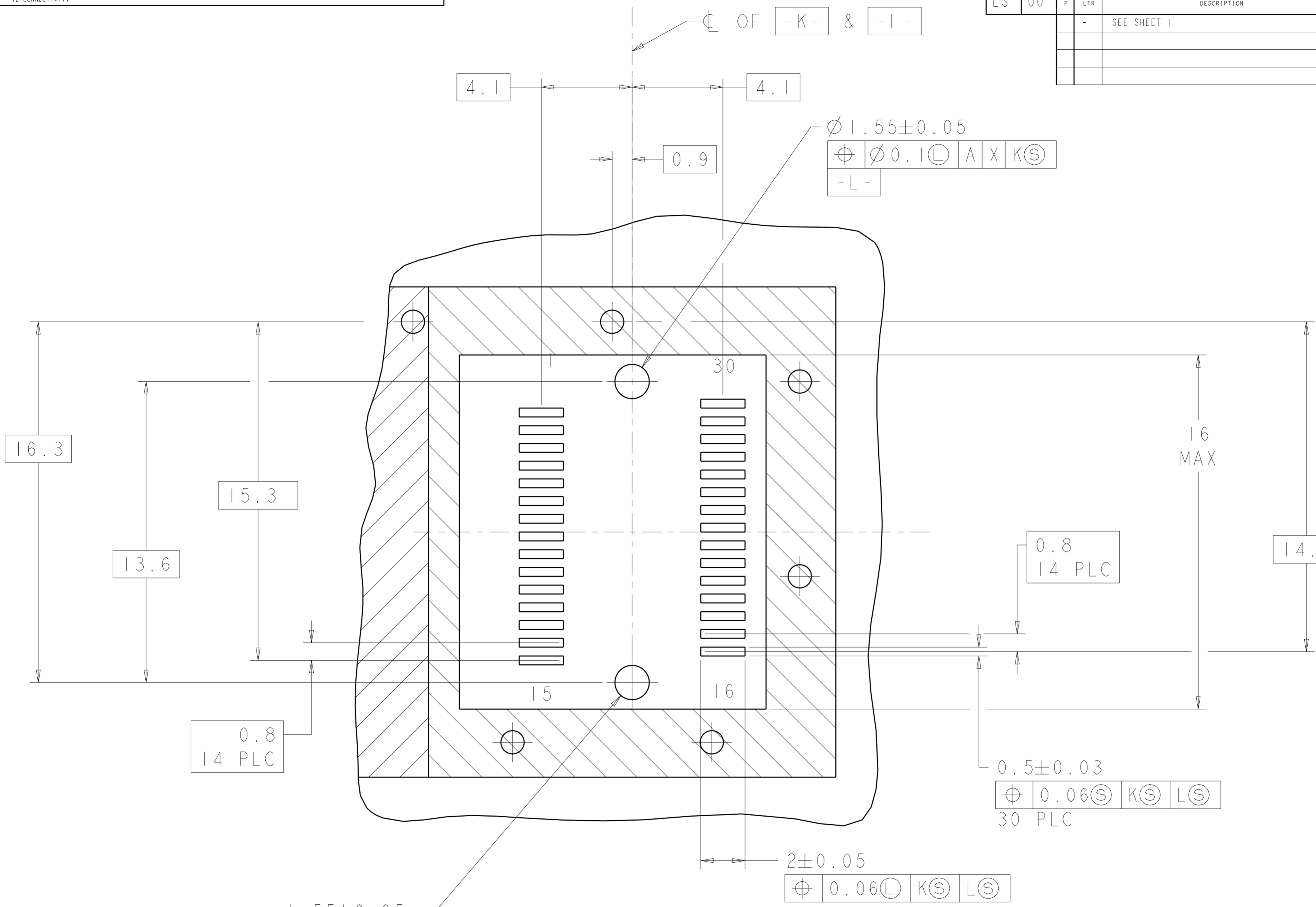
3

2

1

THIS DRAWING IS UNPUBLISHED. RELEASED FOR PUBLICATION 20
 © COPYRIGHT 20 BY - TE CONNECTIVITY ALL RIGHTS RESERVED.

LOC	DIST	REVISIONS					
ES	00	P	LTR	DESCRIPTION	DATE	DWN	APVD
		-		SEE SHEET 1	-	-	-



DETAILED HOST BOARD MECHANICAL LAYOUT

THIS DRAWING IS A CONTROLLED DOCUMENT.		DWN PETER PAN 01-Nov-16	 TE Connectivity
DIMENSIONS: mm		CHK JASON YANG 01-Nov-16	
TOLERANCES UNLESS OTHERWISE SPECIFIED:		APVD ALEX CAI 01-Nov-16	
0 PLC ±0.25 1 PLC ±0.25 2 PLC ±0.20 3 PLC ± 4 PLC ± ANGLES ±5° FINISH		NAME CAGE ASSEMBLY, 10 GIGABIT, XFP PRODUCT SPEC 108-2127 APPLICATION SPEC 114-13096 WEIGHT - CUSTOMER DRAWING	
MATERIAL -		SIZE A200779	DRAWING NO C-2170435
		RESTRICTED TO -	SCALE 4:1
		SHEET 3 OF 3	REV A

Mouser Electronics

Authorized Distributor

Click to View Pricing, Inventory, Delivery & Lifecycle Information:

[TE Connectivity:](#)

[2170435-1](#)