

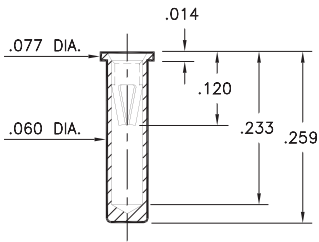
# PIN RECEPTACLES

FOR .022" - .032" DIAMETER PINS

## 0295

0295-0-15-XX-06-XX-10-0

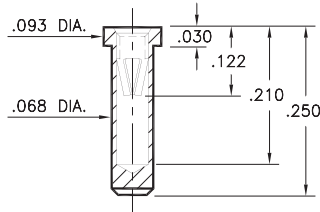
Solder mount in .063 min. mounting hole  
Also available on 12mm wide carrier tape:  
1,000 parts per 13" reel  
See page 194.7 for Tape & Reel details



## 0292

0292-0-15-XX-06-XX-10-0

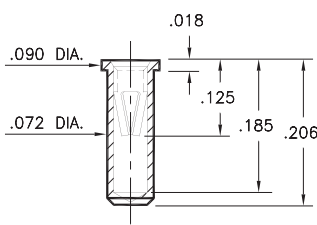
Solder mount in .071 min. mounting hole



## 0294

0294-0-15-XX-06-XX-10-0

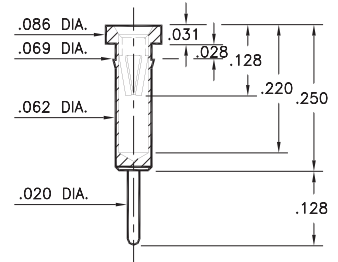
Solder mount in .076 min. mounting hole  
Also available on 12mm wide carrier tape:  
1,400 parts per 13" reel  
See page 194.7 for Tape & Reel details



## 0398

0398-0-15-XX-06-XX-04-0

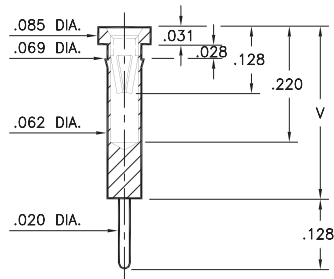
Press-fit in .066 mounting hole



## 0397

0397-X-15-XX-06-XX-04-0

Press-fit in .066 mounting hole

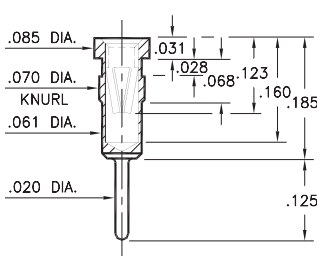


Basic Part Number	Length V
0397-0	.353
0397-1	.333
0397-2	.413

## 0297

0297-0-15-XX-06-XX-04-0

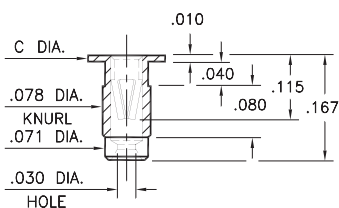
Press-fit in .067 mounting hole



## 9019/9039

90X9-0-19-XX-06-XX-10-0

Press-fit in .075 mounting hole



Basic Part Number	Head Dia. C
9019-0	.125
9039-0	.100

### SPECIFICATIONS:

**Shell Material:** Brass Alloy 360, 1/2 Hard

**Contact Material:** Beryllium Copper Alloy 172, HT

**Dimensions:** Inches

**Tolerances On:** Lengths: ±.005

Diameters: ±.002

Angles: ± 2°



**ORDER CODE:** XXXX - X - XX - XX - 06 - XX - XX - 0

**BASIC PART #**

**SPECIFY SHELL FINISH:**

- 01 200 μ" TIN/LEAD OVER NICKEL
- ◆ 80 200 μ" TIN OVER NICKEL (RoHS)
- ◆ 15 10 μ" GOLD OVER NICKEL (RoHS)

**SPECIFY CONTACT FINISH:**

- 01 200 μ" TIN/LEAD OVER NICKEL
- ◆ 80 200 μ" TIN OVER NICKEL (RoHS)
- ◆ 27 30 μ" GOLD OVER NICKEL (RoHS)

**SELECT CONTACT:**

#06 CONTACT (DATA ON PAGE 255)

(For alternate contact choices, see group D on page 248)



# Mouser Electronics

Authorized Distributor

Click to View Pricing, Inventory, Delivery & Lifecycle Information:

## Mill-Max:

[9039-0-19-01-06-01-10-0](#) [9039-0-19-01-06-27-10-0](#) [9019-0-19-01-06-01-10-0](#) [9019-0-19-01-06-27-10-0](#) [0398-0-15-80-06-80-04-0](#) [0398-0-15-80-06-27-04-0](#) [0397-2-15-80-06-80-04-0](#) [0397-2-15-80-06-27-04-0](#) [0397-1-15-80-06-80-04-0](#) [0397-1-15-80-06-27-04-0](#) [0397-0-15-80-06-80-04-0](#) [0397-0-15-80-06-27-04-0](#) [0297-0-15-80-06-80-04-0](#) [0297-0-15-80-06-27-04-0](#) [0295-0-15-80-06-80-10-0](#) [0295-0-15-80-06-27-10-0](#) [0294-0-15-80-06-80-10-0](#) [0294-0-15-80-06-27-10-0](#) [0292-0-15-80-06-80-10-0](#) [0292-0-15-80-06-27-10-0](#) [0294-0-15-15-06-27-10-0](#) [0292-0-15-15-06-27-10-0](#) [0295-0-15-15-06-27-10-0](#) [0398-0-15-15-06-27-04-0](#) [0292-0-15-01-06-27-10-0](#) [0297-0-15-01-06-01-04-0](#) [0295-0-15-01-06-27-10-0](#) [0294-0-15-01-06-14-10-0](#) [0294-0-15-01-06-27-10-0](#) [0398-0-15-01-06-01-04-0](#) [0398-0-15-01-06-27-04-0](#) [0397-2-15-01-06-01-04-0](#) [0397-2-15-01-06-27-04-0](#) [0397-1-15-01-06-01-04-0](#) [0397-1-15-01-06-27-04-0](#) [0397-0-15-01-06-01-04-0](#) [0397-0-15-01-06-27-04-0](#) [0297-0-15-01-06-27-04-0](#) [0295-0-15-01-06-01-10-0](#) [0294-0-15-01-06-01-10-0](#) [0292-0-15-01-06-01-10-0](#) [9039-0-19-80-06-80-10-0](#) [9039-0-19-80-06-27-10-0](#) [9019-0-19-80-06-80-10-0](#) [9019-0-19-80-06-27-10-0](#) [0292-0-15-00-00-00-10-0](#) [0297-0-15-00-00-00-04-0](#) [0297-0-15-15-06-27-04-0](#) [0397-0-15-00-00-00-04-0](#) [0397-0-15-15-06-27-04-0](#) [0397-1-15-00-00-00-04-0](#) [0397-1-15-15-06-27-04-0](#) [0397-2-15-00-00-00-04-0](#) [0397-2-15-15-06-27-04-0](#) [9019-0-19-15-06-27-10-0](#) [9039-0-19-15-06-27-10-0](#) [0398-0-15-15-06-14-04-0](#) [0294-0-15-80-06-14-10-0](#) [0397-1-15-15-06-14-04-0](#) [0295-0-15-01-06-14-10-0](#) [0297-0-15-80-06-14-04-0](#) [0292-0-15-01-06-14-10-0](#) [0292-0-15-80-06-14-10-0](#) [0397-2-15-01-06-14-04-0](#) [0398-0-15-80-06-14-04-0](#) [0397-2-15-80-06-14-04-0](#) [0295-0-15-80-06-14-10-0](#) [0297-0-15-01-06-14-04-0](#) [0398-0-15-01-06-14-04-0](#) [0397-0-15-80-06-14-04-0](#) [0397-1-15-80-06-14-04-0](#) [0397-0-15-01-06-14-04-0](#) [0397-1-15-01-06-14-04-0](#) [0397-0-15-15-06-14-04-0](#) [0397-2-15-15-06-14-04-0](#) [0297-0-15-15-06-14-04-0](#) [9019-0-19-80-06-14-10-0](#) [9039-0-19-80-06-14-10-0](#) [9019-0-19-01-06-14-10-0](#) [9039-0-19-01-06-14-10-0](#)