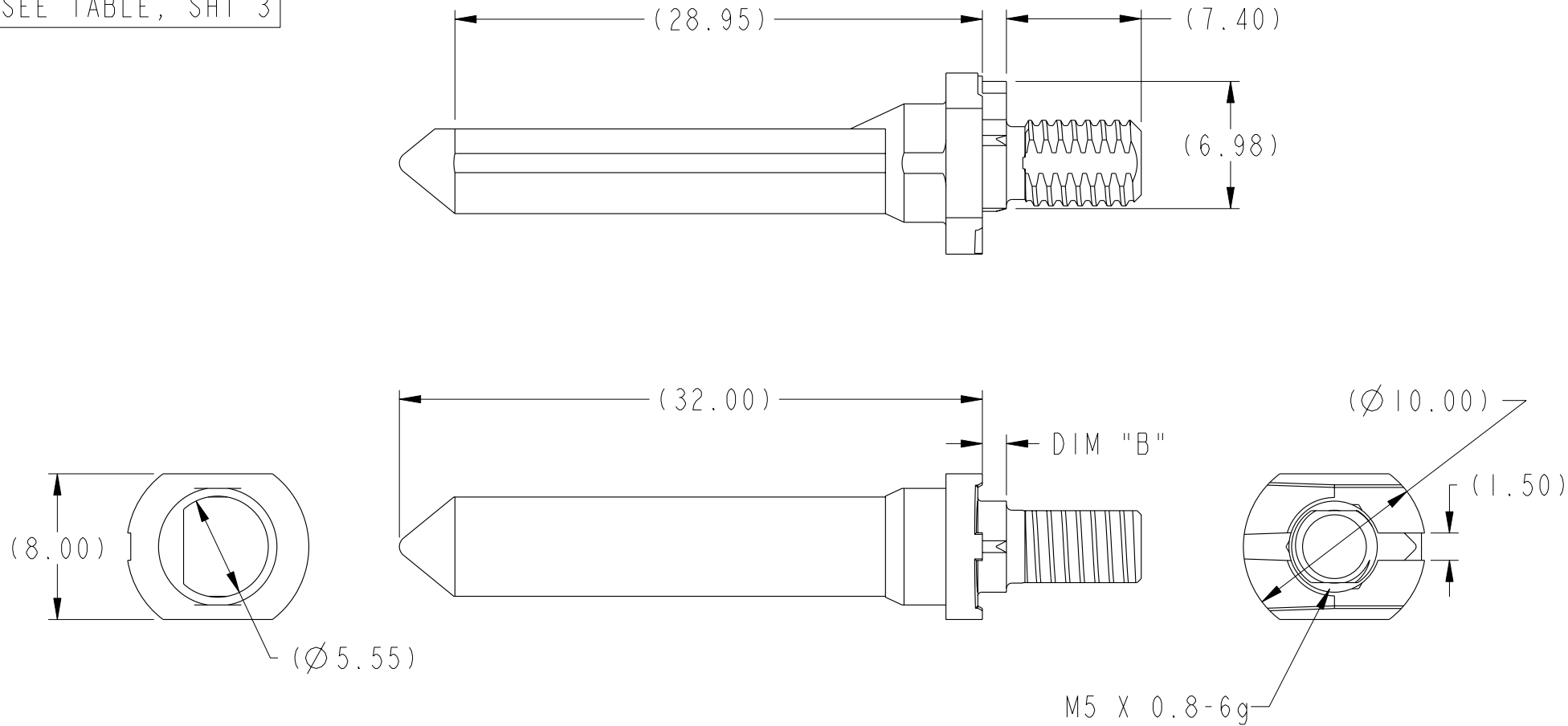




Copyright FCI.

PRODUCT NUMBER  
SEE TABLE, SHT 3



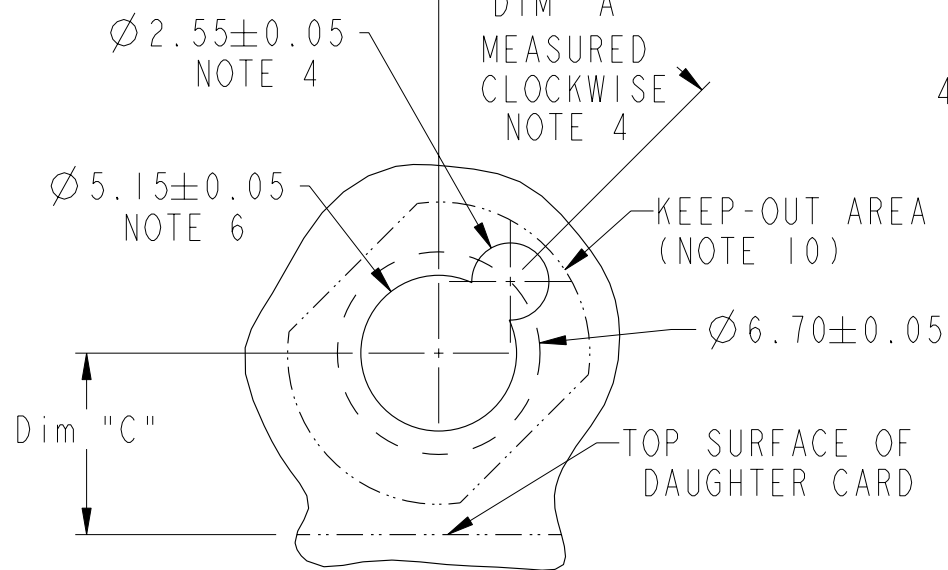
rev	ecn no	dr	date
A	S09-0296	CH	2009-04-06
-	-	-	-
-	-	-	-
-	-	-	-
-	-	-	-
-	-	-	-

www.fciconnect.com			surface 3.200 ASME Y14.5	tolerance std ASME Y14.5	projection MM
TOLERANCES UNLESS OTHERWISE SPECIFIED			0.X ±0.3	0.XX ±0.10	0.XXX ±0.050
Dr	Y. K. LIM	2009-04-06	ANGULAR	LINEAR	size A4
Eng	Y. K. LIM	2009-04-06	0° ±2°		Scale 3:1
Chr	C. H. TAN	2009-04-06	Product family AirMax Accessories		ECN S09-0296
Appr			Spec ref		-
FCI			title 10.8mm GUIDE PIN, EXT. THREAD		Rev. A
catalog no			dwg no 10098938		sheet 1 of 4
			CUSTOMER		

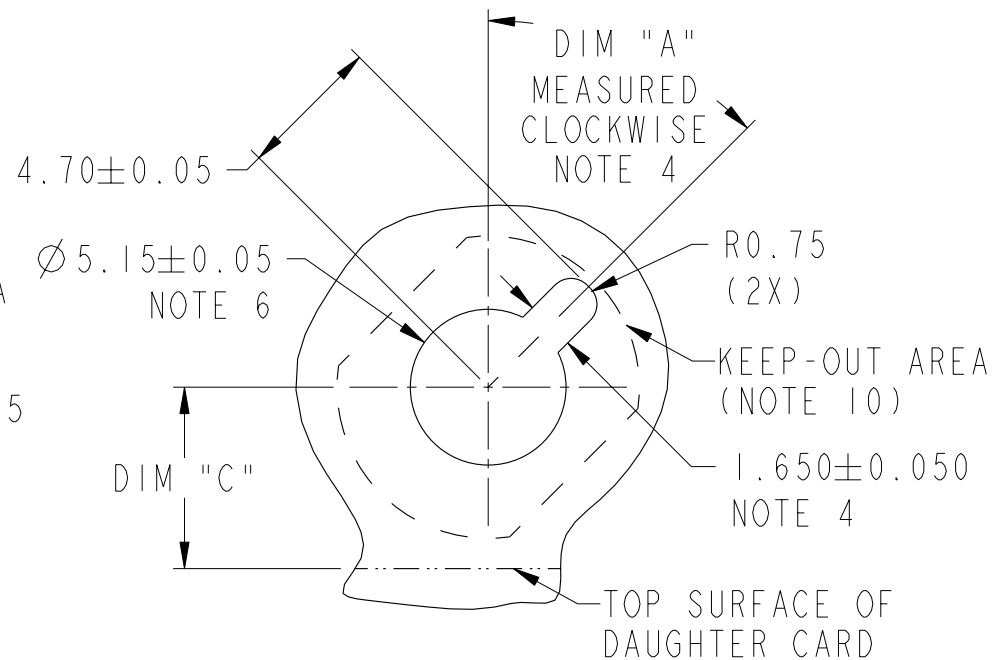
REV F - 2006-04-17



Copyright FCI.



RECOMMENDED PCB LAYOUT(DRILLING)  
NOTES 4, 6, & 7  
SCALE 4:1

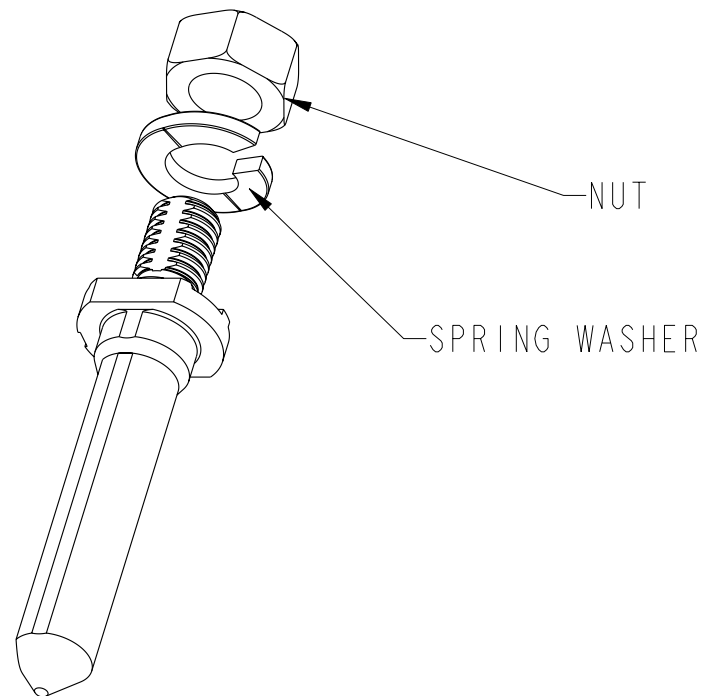


RECOMMENDED PCB LAYOUT(MILLING)  
NOTE 4, 6 & 7  
SCALE 4:1

10.8 MM RECEPTACLE GUIDE MODULE NOTE 4 & 5	DIM "A"
10098939-1X1Z00LF	0°
10098939-1X2Z00LF	45°
10098939-1X3Z00LF	90°
10098939-1X4Z00LF	135°
10098939-1X5Z00LF	180°
10098939-1X6Z00LF	225°
10098939-1X7Z00LF	270°
10098939-1X8Z00LF	315°

	title 10.8mm GUIDE PIN, EXT. THREAD	dwg no 10098938	Rev. A
	catalog no -	CUSTOMER	sheet 2 of 4

PART NUMBER (SEE NOTE 5)	DIM "B"	DIM "C" 4/5 PAIR	DIM "C" 2/3 PAIR
10098938-10110LF	1.32	6.00	4.50



P/N DESIGNATION: 10098938-10XYZLF

LEAD-FREE DESIGNATION: NOTE 8

WITH OR WITHOUT SPRING WASHER, SEE NOTE 5

WITH OR WITHOUT FLAT WASHER, SEE NOTE 5

DIM "B": SEE TABLE (SHEET 3)



title 10.8mm GUIDE PIN,  
EXT. THREAD  
catalog no -

dwg no 10098938

Rev.  
A

CUSTOMER sheet 3 of 4



Copyright FCI.

1. MATERIAL: ZINC ALLOY
2. FINISH: ZINC YELLOW CHROMATE
3. APPLICATION SPECIFICATION: GS-20-045
- ④. KEY HOLE ORIENTATION (DIM "A") WILL BE DEFINED BY THE MATING RECEPTACLE GUIDE MODULE PART NUMBER - SEE TABLE (ORIENTATION SHOWN IS FOR 10098939-1X2Z00LF)
- ⑤. Y = 0 FOR GUIDE PIN WITH FLAT WASHER  
Y = 1 FOR GUIDE PIN WITHOUT FLAT WASHER  
Z = 0 FOR GUIDE PIN WITH SPRING WASHER  
Z = 1 FOR GUIDE PIN WITHOUT SPRING WASHER
- ⑥. REFER TO CUSTOMER DRAWING 10035911 FOR INFORMATION REGARDING PCB LAYOUT OF POWER AND GUIDE MODULES RELATIVE TO SIGNAL MODULES
- ⑦. THRU HOLE PLATING AND ANNULAR RINGS MUST BE ADDED IN APPLICATIONS THAT USE THE ESD GROUNDING OPTION. FINISHED HOLE SIZE IS THE SAME REGARDLESS OF PLATED BARREL OR NOT.
- ⑧. THIS PRODUCT MEETS EUROPEAN UNION DIRECTIVES AND OTHER COUNTRY REGULATIONS AS DESCRIBED IN GS-22-008.
9. PACKAGING MEETS GS-14-920 LEAD FREE LABELING SPECIFICATION.
- ⑩. KEEP OUT ZONE MATCH PROFILE OF SEATED GUIDE PIN, SEE SHEET 1 FOR REFERENCE DIMENSIONS OF GUIDE PIN OUTLINE.

△ A 11. A △ A SYMBOL WILL BE NEXT TO ANY DIMENSION, VIEW OR NOTE WHICH HAS BEEN MODIFIED WITH THE CURRENT DRAWING REVISION



title	10.8mm GUIDE PIN, EXT. THREAD		dwg no	10098938	Rev. A
	catalog no	-			
CUSTOMER			sheet 4 of 4		

# Mouser Electronics

Authorized Distributor

Click to View Pricing, Inventory, Delivery & Lifecycle Information:

[FCI / Amphenol:](#)

[10098938-10110LF](#)