

5

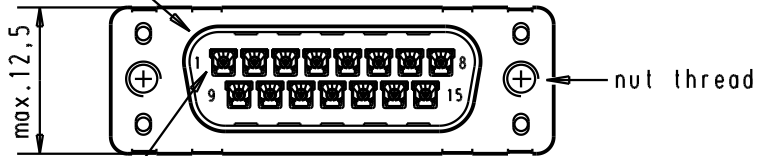
4

3

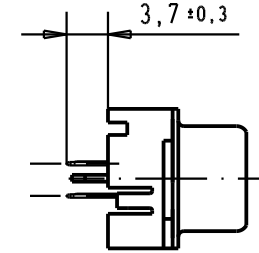
2

1

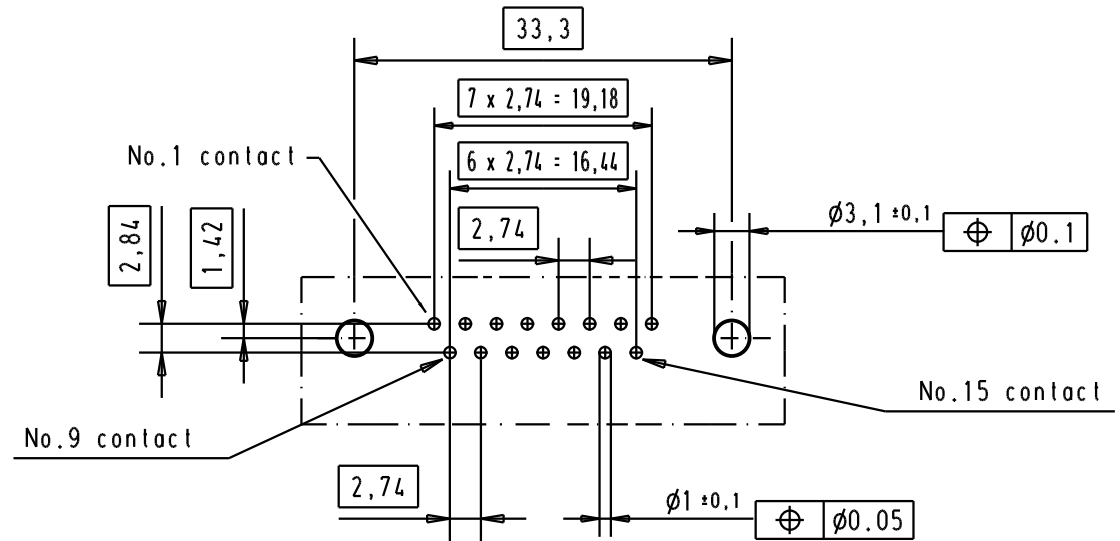
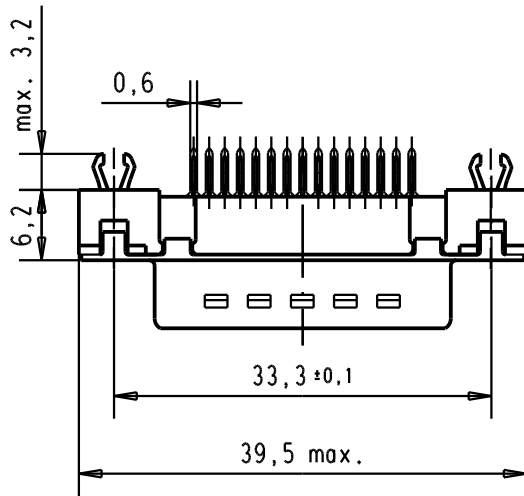
Mating face according to : MIL-C-24308 / DIN 41652 / CECC 75301-802



No.1 contact

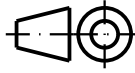



Printed board layout component side



Connector retention and insertion forces on the PCB = 25 / 80 Newtons.

A

09 65 261 3711	M3	1								 All Dim. in mm Orig. Size DIN A 4	D-Sub, 15 poles, male, straight, with solder pins 3.7, nuts and grounding board lock	Maßstab/ Scale 1,5:1
09 65 261 6711	M3	2				Detail.	05/03/02	CV				
09 65 261 7711	M3	3				Insp.						
09 65 261 3712	4-40 UNC	1				Stand.						
09 65 261 6712	4-40 UNC	2	31892	22/04/04	JH	HARTING EURL F-95972 Paris				TB 09 65 261 X71X	Blatt / Page 1 /	
09 65 261 7712	4-40 UNC	3	29723	05/03/02	CV							
Part number	Nut thread	Performance level	Mod.	Dat.	Name	Sub.						

Mouser Electronics

Authorized Distributor

Click to View Pricing, Inventory, Delivery & Lifecycle Information:

[HARTING:](#)

[09652617711](#)