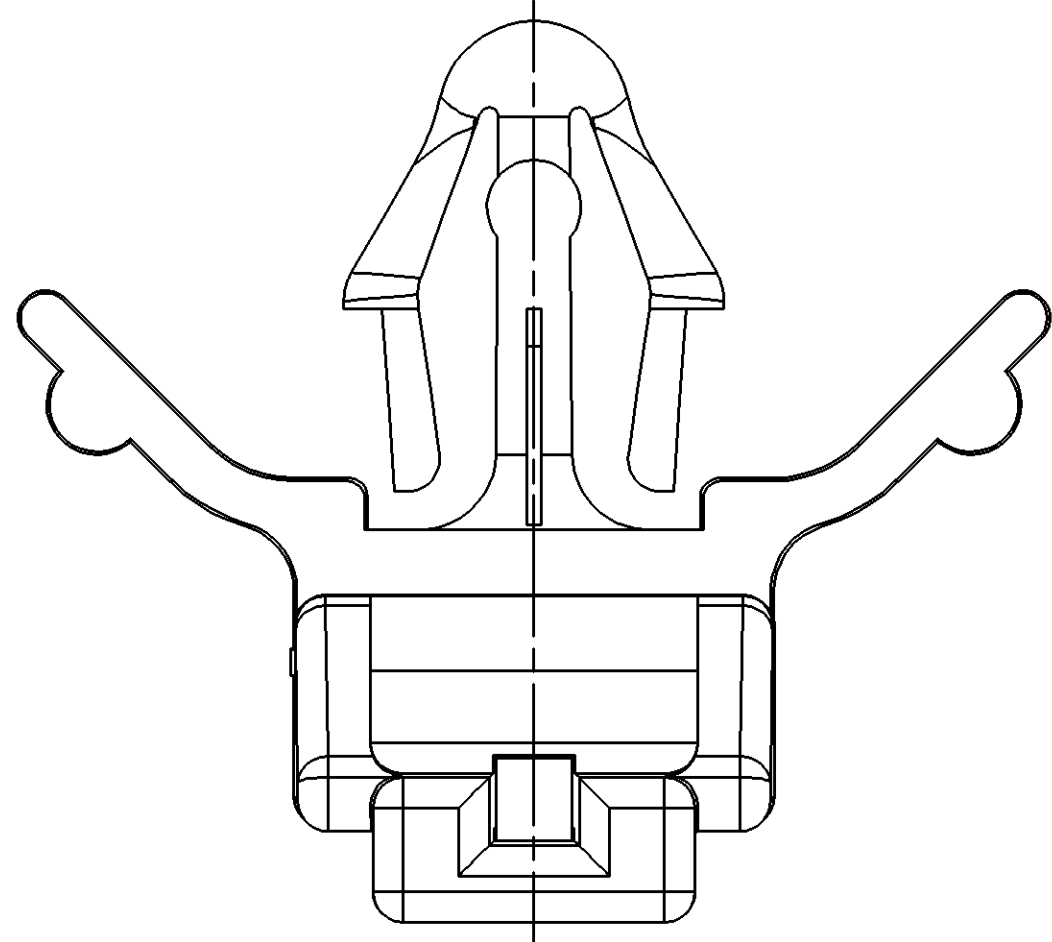
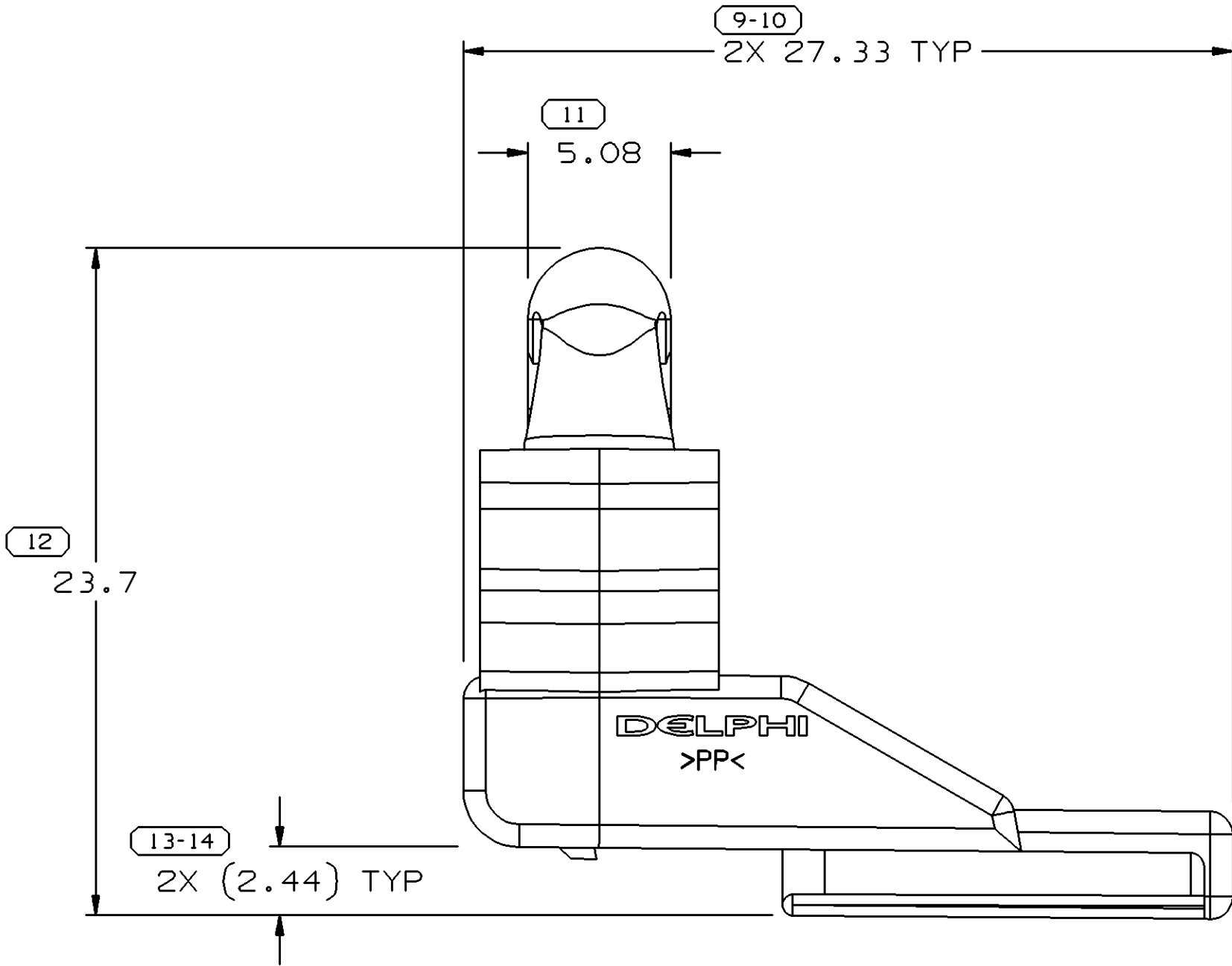
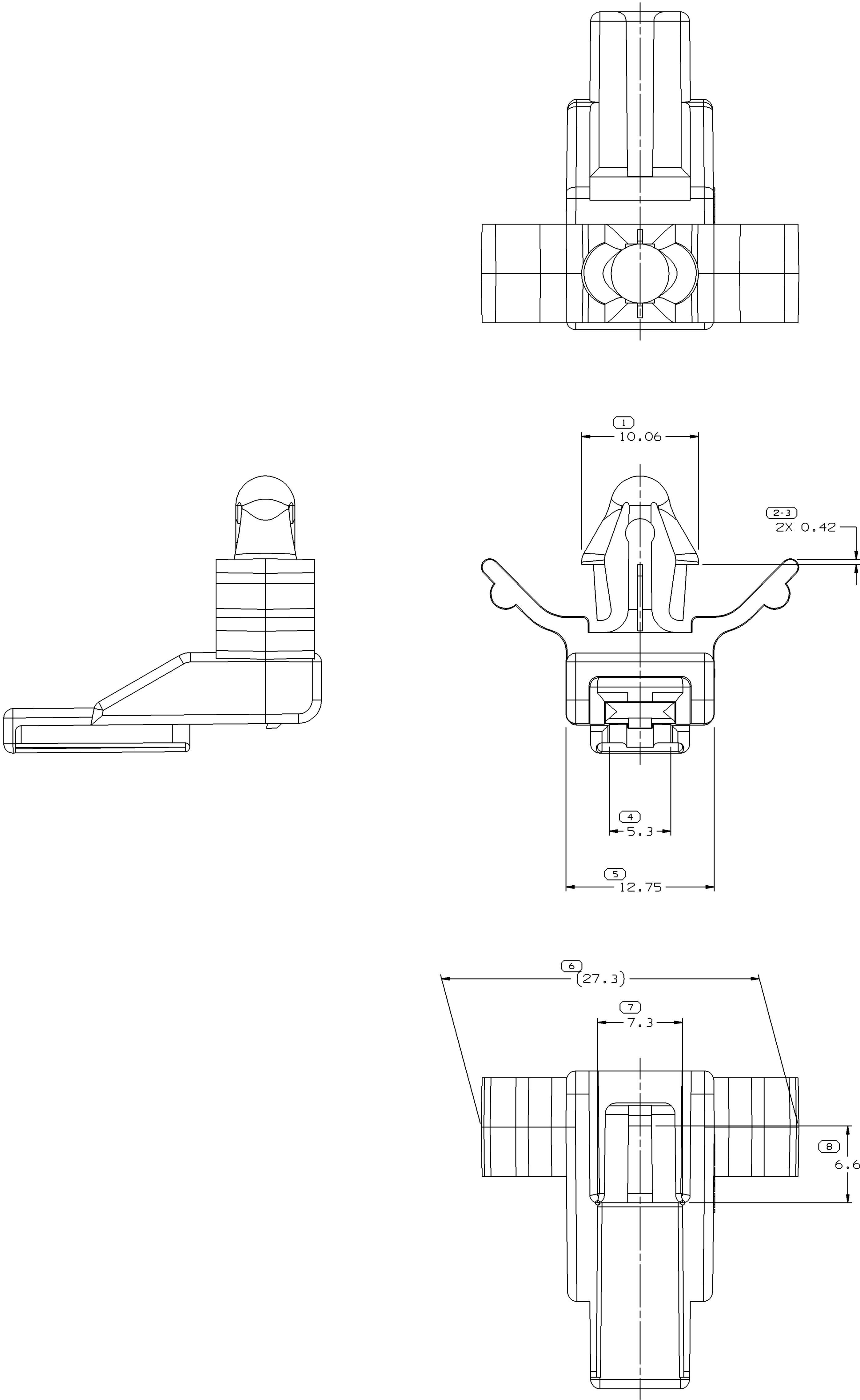
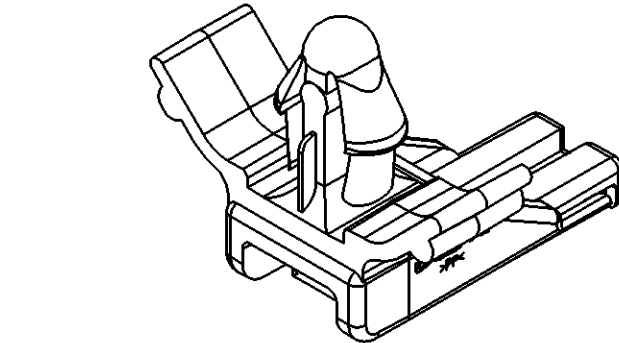


SYMBOL DEFINITION			MISSING NUMBERS			DWG STATUS			ZONE	REVISION HISTORY			AUTH	DR	APVD	APVD			
						DATE	REV	N/P	CHG										
A DIMENSION WITHOUT AN INSPECTION REPORT SYMBOL () DOES NOT REQUIRE INSPECTION. IT MAY BE CONTROLLED ON AN INDIVIDUAL COMPONENT DRAWING.		TOTAL NO. OF SYMBOLS ON DRAWING	11				24NO99	R	02	-	-	CLEARED REVISION COLUMN: 2X 0.42 WAS 2X 0.5, 12.75 WAS 13.19 AND 2X 27.33 TYP WAS 2X 27.5 TYP			197533	PHC	FKV	GH	
		LAST NO. USED	14				26FE00	R	03	-	-	REVISED GRAPHICS			198644	JCO	FKV	GH	
								20AP00	R	03	AA	-	REMOVED NOTE 2 AND REMOVED BLENDS FROM LOCK ARM			199414	HAM	KBD	GH
								12JN02	R	03	AB	-	MAT'L SPEC WAS R0061354 AND ADDED DELPHI LOGO & NOTES 2, 3 & 4			225082	ARA	BEG	FR
								19AU04	R	04	-	-	MATERIAL SPEC WAS M06610021 UPDATED RECYCLING CODE NOTE & UPDATED FORMAT			257571	EES	EES	ET






NOTES

- UNLESS OTHERWISE SPECIFIED AND/OR INDICATED: DIMENSIONS ARE TO FACE OF VIEW SHOWN AND AUTOMATICALLY ROUNDED BY COMPUTER FOR INSPECTION (SEE MATH MODEL FOR PRECISE DIMENSIONS). FOR ALL OTHER DIMENSIONS NOT SHOWN BUT REQUIRED FOR TOOL BUILD, SEE MATH MODEL FOR PRECISE TOOL PATH DATA.
- MATERIAL RECYCLING CODE PER ISO 11469, (2.3)X(0.1) RAISED CHARACTERS AS SHOWN TO BE LOCATED ON ANY EXTERIOR SURFACE. OPTIONAL CONSTRUCTION TO BE NO MATERIAL RECYCLING CODE.
- (2.3)X(0.1) RAISED DELPHI CORPORATE BRAND TO BE LOCATED ON ANY EXTERIOR SURFACE, PREFERABLY VISIBLE AT FINAL ASSEMBLY. OPTIONAL CONSTRUCTION TO BE "PED" OR NO LOGO.
- RECOMMENDED HOLE SIZE FOR CLIP: 6.1-6.6 DIAMETER HOLE IN 3.81 MAXIMUM THICKNESS STOCK.



VIEW SCALE DOES NOT REFLECT ACTUAL PART SIZE

12 PROCESS SENSITIVE DIMENSION												REFERENCE			
DIMENSIONS ENCLOSED IN () INDICATE REFERENCE DIMENSIONS AND NO TOLERANCE LIMITS ARE ESTABLISHED															
DIMENSIONAL RANGE (MM)												THIRD ANGLE PROJECTION		DO NOT SCALE	
CHART #1															
FROM TO >0 >20 >30 >70 >100 >150 >200 >250 >300 >400															
TOLERANCE UNLESS OTHERWISE SPECIFIED															
±0.15 ±0.25 ±0.30 ±0.35 ±0.40 ±0.50 ±0.63 ±0.8 ±1 ±1.2														USE MATH DATA	
ANGULAR TOLERANCE 12°															

THIRD ANGLE PROJECTION		DO NOT SCALE	
USE MATH DATA		UNSPRINTED	

DELPHI		DELPHI PACKARD ELECTRIC SYSTEMS		WARREN, OH	
DR		DATE			
APVD1 FCO, RESENDIZ		25JN98			
APVD2 JOSE HUERTA		26JN98			
APVD3 J. KOUNTZ		13JL98			
APVD4					
APVD5					
SUBSTANCES OF CONCERN AND RECYCLED CONTENT PER DELPHI 10949001					
MATERIAL					
M2097001 PP 1M BLK					
DRAWING NAME		MOUN CLIP CONN			
DRAWING NUMBER		15358672			
SIZE		SCALE		FRAME NO	
A0		5:1		1 OF 1	
				SHEET NO	
				1 OF 1	
				REV	
				R 04	
				N/P	
				-	

Mouser Electronics

Authorized Distributor

Click to View Pricing, Inventory, Delivery & Lifecycle Information:

[Aptiv:](#)

[15358672](#)