
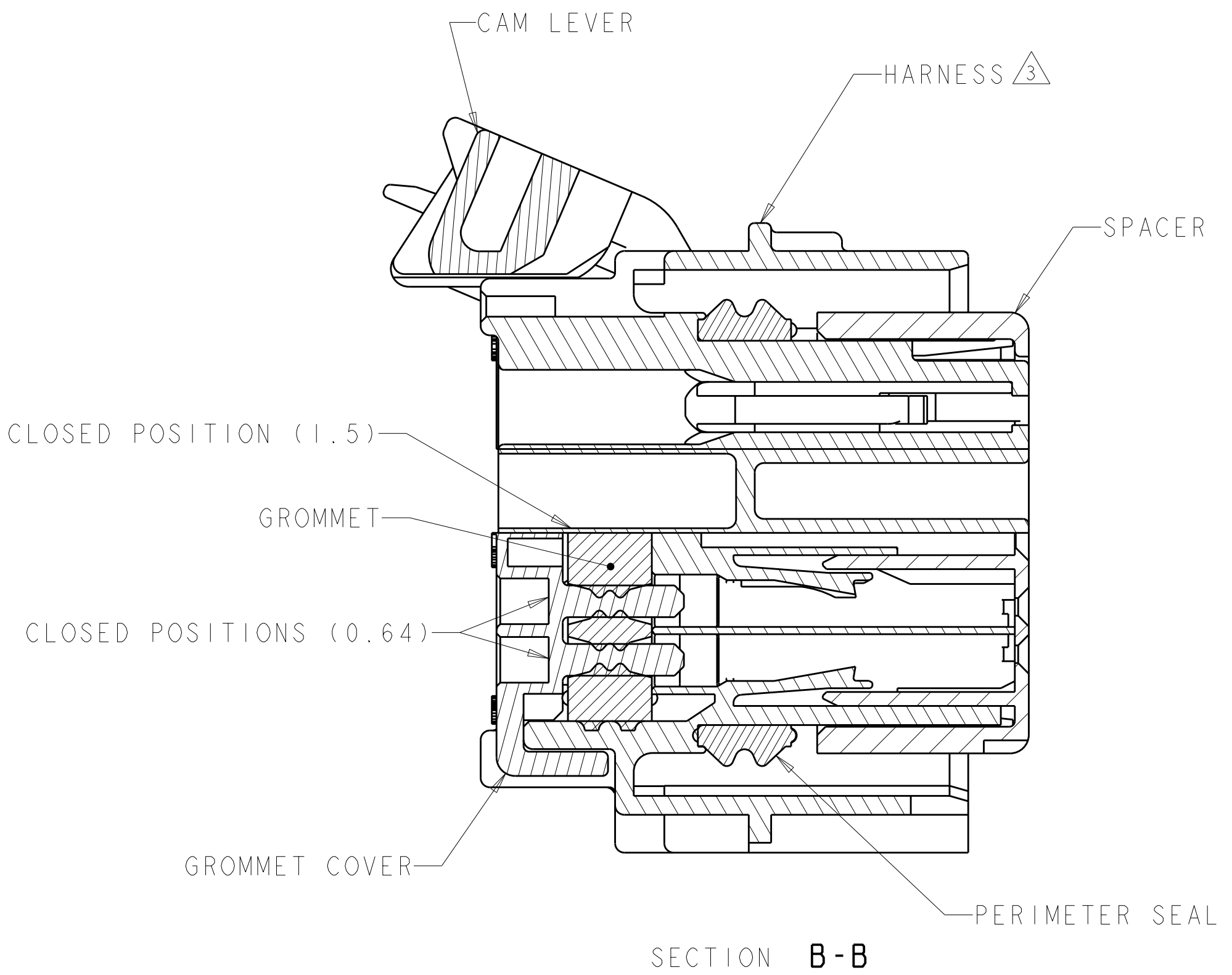
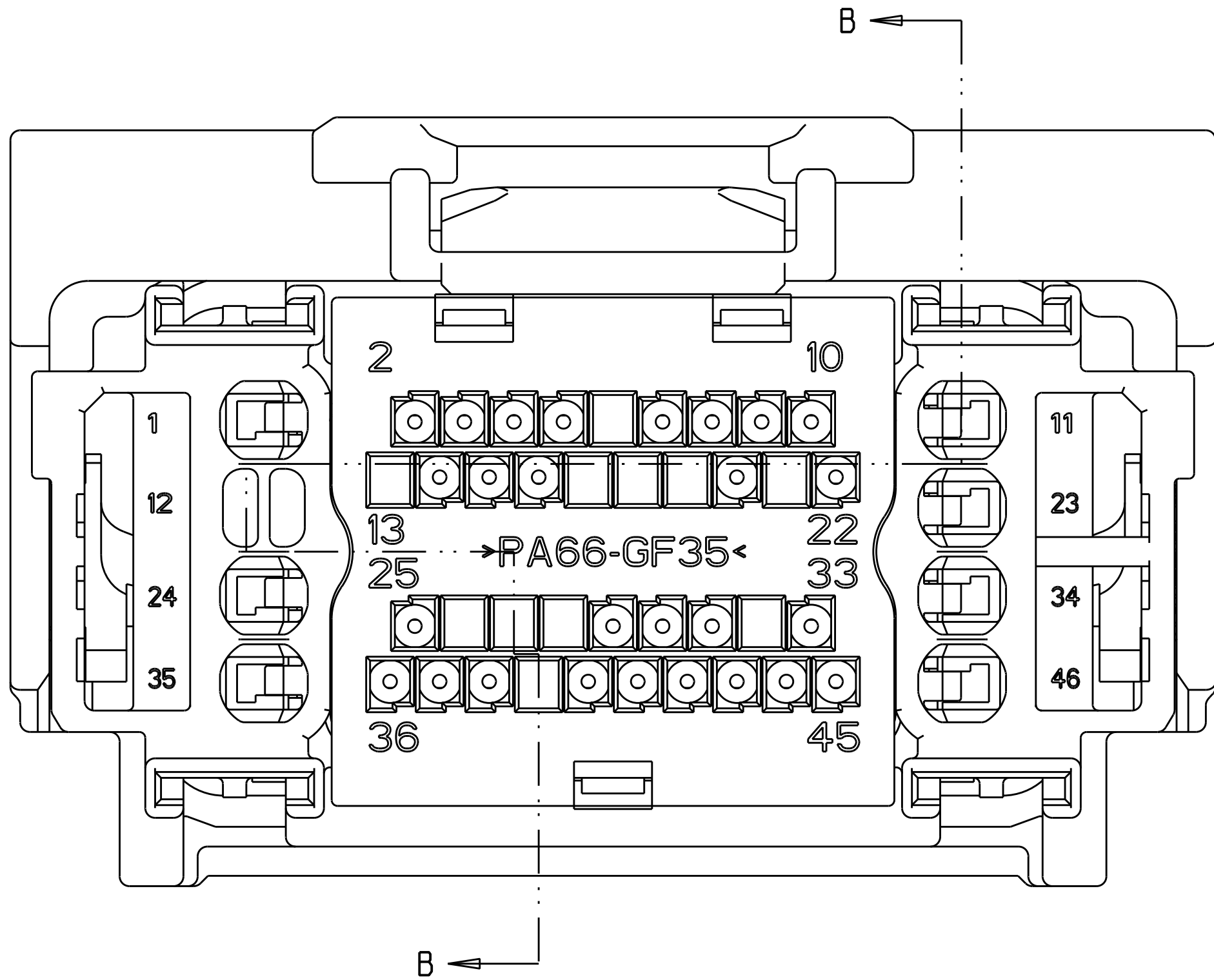
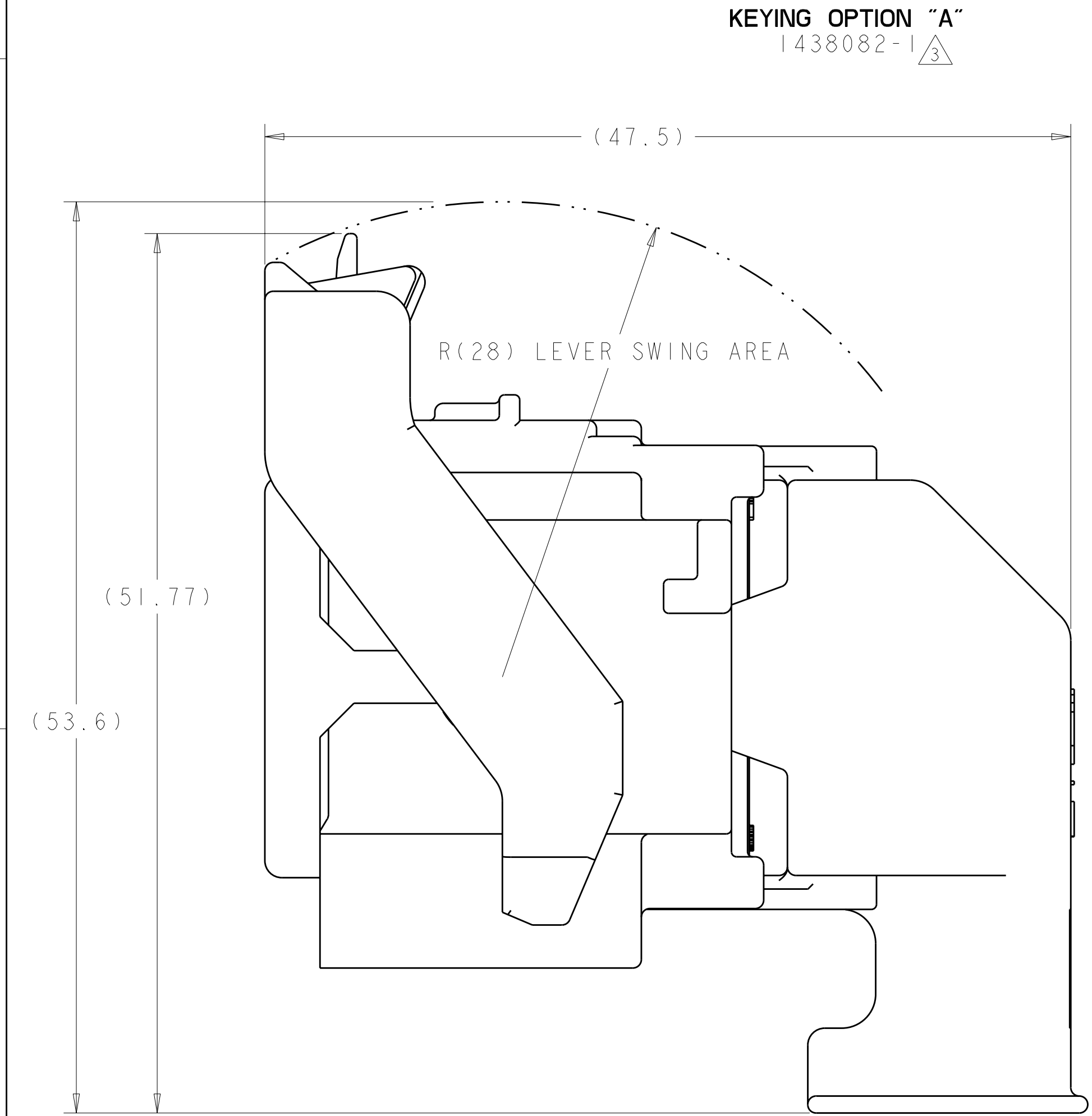


SCALE 1 : 1

KEYING OPTION "B"  
1438082-2 





△ MATERIAL:  
HARNES - 35% GLASS FILLED PA66, BLACK  
ALT MAT'L: HARNES - 30% GLASS FILLED sPS, BLACK  
SPACER - 40% GLASS FILLED PPS+PA66, RED  
ALT MAT'L: 30% GLASS FILLED sPS, RED  
ALT MAT'L: 35% GLASS FILLED PA66, RED  
COVER - 35% GLASS FILLED PA66, BLACK  
ALT MAT'L: COVER - 30% GLASS FILLED LCP, BLACK  
CAM LEVER - 35% GLASS FILLED NYLON, GRAY  
GROMMET - SILICONE, BROWN  
PERIMETER SEAL - SILICONE, GREEN

2. CAM LEVER AND SPACER ARE SHIPPED IN PRE-LATCH POSITION.

③ SEE PINOUT CHART ON SHEETS 2, 3 AND 4 FOR CLOSED CIRCUIT CONFIGURATIONS.


④ CAVITIES WITH A NUMERIC SYMBOL INDICATES CLOSED TERMINAL LOCATIONS.  
BLANK CAVITIES INDICATE OPEN TERMINAL HOLE LOCATIONS.

SHOWN WITH CAM LEVER AND SPACER  
IN LOADED POSITION WITH  
OPTIONAL WIRESHIELD

<small>1. THIS DRAWING IS THE PROPERTY OF TYCO ELECTRONICS CORPORATION. IT IS TO BE USED FOR THE MANUFACTURE OF THE PARTS SPECIFIED HEREON. IT IS NOT TO BE REPRODUCED OR COPIED FOR ANY OTHER PURPOSE WITHOUT THE WRITTEN PERMISSION OF TYCO ELECTRONICS CORPORATION.</small>		<small>DWN</small> <b>01AUG2003</b>		 <b>Tyco Electronics</b>		Tyco Electronics Harrisburg, PA 17105-3608	
<small>DIMENSIONS:</small> mm		<small>TOLERANCES UNLESS OTHERWISE SPECIFIED:</small> 0 P L C ± .3 1 P L C ± .3 2 P L C ± .10 3 P L C ± .3 4 P L C ± .3 ANGLE ± °		<small>CHEK</small> <b>D. STRAUSSER</b>		<small>NAME</small> 46 WAY PCM CONNECTOR HARNESS ASSEMBLY	
		<small>APPR</small> <b>D. STRAUSSER</b>		<small>PRODUCT SPEC</small> -		<small>SIZE</small> A	
<small>MATERIAL</small> SEE TABLE		<small>FINISH</small> SEE TABLE		<small>APPLICATION SPEC</small> -		<small>CAGE CODE</small> 00779	
				<small>WEIGHT</small> -		<small>DRAWING NO</small> C-1438082	
				<small>CUSTOMER DRAWING</small> -		<small>RESTRICTED TO</small> -	
				<small>SCALE</small> 4:1		<small>SHEET</small> 1 of 5	
				<small>REV</small> 1		<small>REV</small> 1	



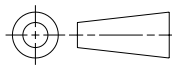
LOC	DIST	REVISIONS					
FX	00	P	LTR	DESCRIPTION	DATE	DWN	APVD
		-		SEE SHEET 1	-	-	-

		44							35		32							22								12		9	7	6				1	6-1438735-7	2LIT-14A464-SD-086																
		44							35		32															12		9	7	6				1	6-1438735-3	2LIT-14A464-SD-085																
									35																											6-1438735-2	2LIT-14A464-SD-084															
			43	42		40	39		37				29						20	18			15	14		11	10	9	8	7			4	3	1	6-1438735-1	2LIT-14A464-SD-083															
45		43						38	36			31					25	24						18	17	16		14	12					7	6		2	1	5-1438735-0	2LIT-14A464-SD-082												
45		43						38	36			31					25	24								16	14	12						7	6		2	1	4-1438735-9	2LIT-14A464-SD-081												
45		43						38	36			32	31				25	24		21		19	18	17	16		14	12						7	6		1	4-1438735-8	2LIT-14A464-SD-080													
45		43						39	38	37	36			31			25	24						18	17	16		14	13	12			9	7	6		2	1	4-1438735-7	2LIT-14A464-SD-079												
				42																20	18					13	11	10									2	1	3-1438735-8	2LIT-14A464-SD-078												
				42																20	18					13	11	10										1	3-1438735-7	2LIT-14A464-SD-077												
45		43						39	38	37	36			31			25	24		21	20	19	18	17			14	13	12			9					2	1	3-1438735-6	2LIT-14A464-SD-076												
45		43							38	36			31				25	24		21	20	19	18	17			14	12										2	1	3-1438735-5	2LIT-14A464-SD-075											
			43	42		40	39		37				29							20	18			15	14		11	10	9	8	7			4	3	2	1	3-1438735-3	2LIT-14A464-SD-074													
45		43						39	38	37	36			31			25	24				20	19	18	17			14	13	12			9				2	1	3-1438735-2	2LIT-14A464-SD-073												
45		43							38	36			31				25	24		21	20	19	18	17	16		14	12					7				2	1	3-1438735-1	2LIT-14A464-SD-072												
45		43						39	38	37	36			31			25	24		21	20	19	18	17	16		14	13	12			9	7				2	1	3-1438735-0	2LIT-14A464-SD-071												
45		43							38	36			31				25	24		21	20	19			16		14	12					7				2	1	2-1438735-9	2LIT-14A464-SD-070												
45		43						39	38	37	36			31			25	24		21	20	19			16		14	13	12			9	7				2	1	2-1438735-8	2LIT-14A464-SD-069												
45		43							38	36			31				25	24				20	19	18	17			14	12									2	1	2-1438735-6	2LIT-14A464-SD-068											
											33																13													2	1	2-1438735-5	2LIT-14A464-SD-067									
45	44	43	42		40			38	37	36		33	31					24	22	21	20		18	17	16	15					9	8						2	1	2-1438735-4	2LIT-14A464-SD-066											
		43										31		29									18									8							2	1	2-1438735-1	2LIT-14A464-SD-065										
45		43						38		36	35		31				25	24		21					16		14	12						7	6				2	1	2-1438735-0	2LIT-14A464-SD-064										
45		43						39	38	37	36	35		31			25	24						18	17	16		14	13	12			9	7	6				2	1	1-1438735-9	2LIT-14A464-SD-063										
45		43							38		36	35		32	31			25	24		21		19	18	17	16		14	12					7	6				1	1-1438735-8	2LIT-14A464-SD-062											
45		43							38		36	35		31			25	24								16		14	12					7	6				2	1	1-1438735-7	2LIT-14A464-SD-061										
45		43							38		36	35		31			25	24		21		19			16		14	12						7	6				2	1	1-1438735-6	2LIT-14A464-SD-060										
45		43							38		36	35		31			25	24						18	17	16		14	12					7	6				2	1	1-1438735-5	2LIT-14A464-SD-059										
45		43						39	38	37	36	35		31			25	24		21		19	18	17	16		14	13	12			9	7	6				2	1	1-1438735-4	2LIT-14A464-SD-058											
45		43							38		36	35		31			25	24		21		19	18	17	16		14	12					7	6					2	1	1-1438735-3	2LIT-14A464-SD-057										
				42						37											20		18				15	14		11	10	9	8	7			4	3	2	1	1-1438735-2	2LIT-14A464-SD-056										
45		43									36	35		31				24		21		19			16		14	12							7	6				1	1-1438735-1	2LIT-14A464-SD-055										
										35							27																						3			1-1438735-0	2LIT-14A464-SD-054									
				43								31		29											18							9	8							2		1438735-9	2LIT-14A464-SD-053									
										35							27																		7							1438735-8	2LIT-14A464-SD-052									
46	45	44	43	42	41	40	39	38	37	36	35	34	33	32	31	30	29	28	27	26	25	24	23	22	21	20	19	18	17	16	15	14	13	12	11	10	9	8	7	6	5	4	3	2	1		PART NUMBER	FORD PART NUMBER				
TERMINAL HOLE POSITION																																																				
PIN-OUT CHART KEYING OPTION "A" 																																																				

THIS DRAWING IS UNPUBLISHED. IT IS SUBJECT TO CHANGE WITHOUT NOTICE FOR TYCO ELECTRONICS CORPORATION. IT IS SUBJECT TO CHANGE WITHOUT NOTICE FOR THE CUSTOMER'S ORGANIZATION. IT IS SUBJECT TO CHANGE WITHOUT NOTICE FOR THE LATEST REVISION.

DIMENSIONS:

mm



MATERIAL

-

TOLERANCES UNLESS OTHERWISE SPECIFIED:

9 PLC ±.3  
1 PLC ±0.10  
5 PLC ±.  
4 PLC ±.  
ANGLES ±°  
FINISH -

WEIGHT

-

CUSTOMER DRAWING

SCALE 4:1

SHEET 3 OF 5

REV 1

DWN R. VESTAL 01AUG2003  
CHK D. STRAUSSER 01AUG2003  
APVD D. STRAUSSER 01AUG2003

NAME


46 WAY PCM CONNECTOR HARNESS ASSEMBLY

SIZE A

CAGE CODE 00779

DRAWING NO. C=1438082

RESTRICTED TO -

 Tyco Electronics  
Harrisburg, PA 17105-3608

PRODUCT SPEC

APPLICATION SPEC

WEIGHT

CUSTOMER DRAWING





# Mouser Electronics

Authorized Distributor

Click to View Pricing, Inventory, Delivery & Lifecycle Information:

[TE Connectivity:](#)

[1-1438082-3](#)