

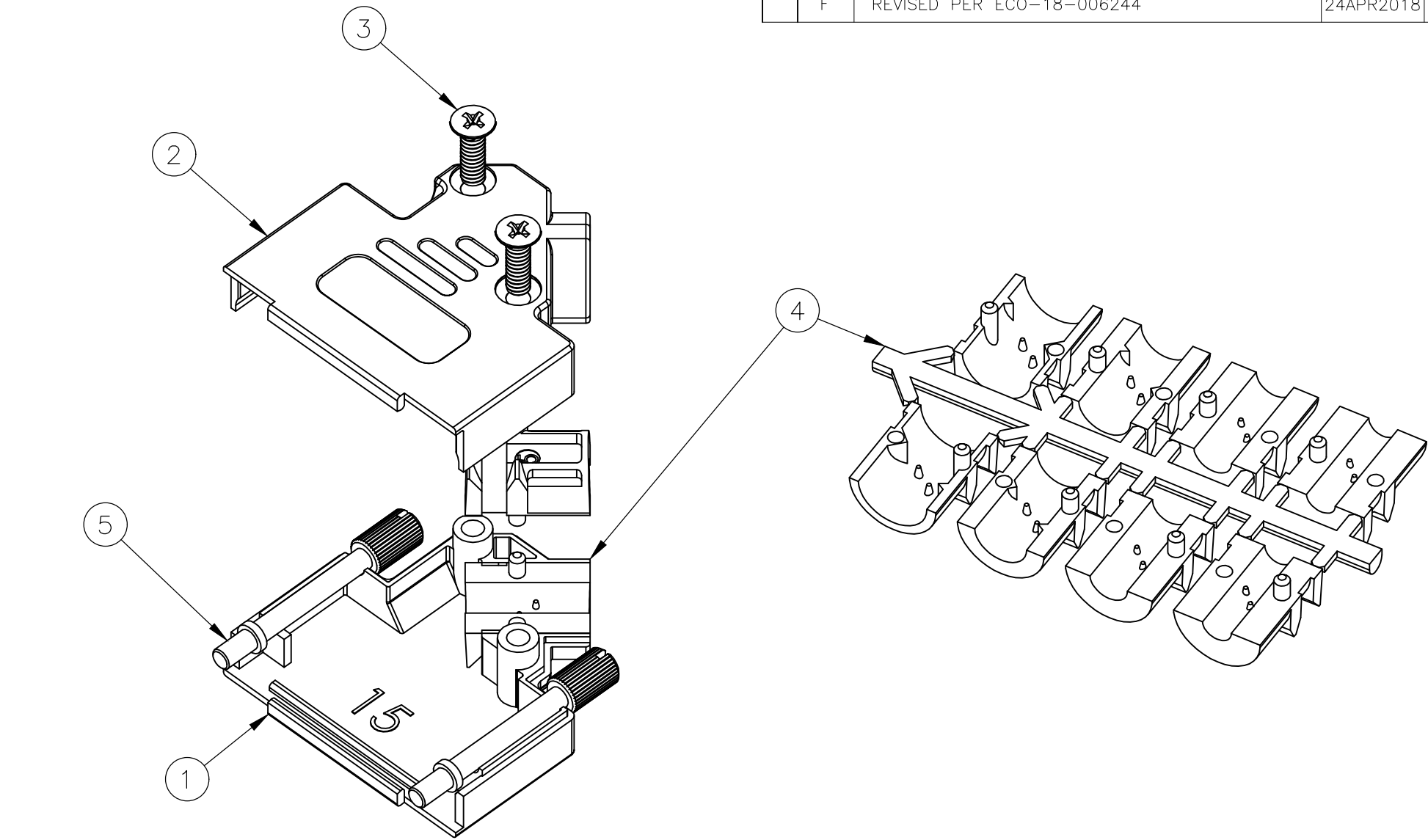
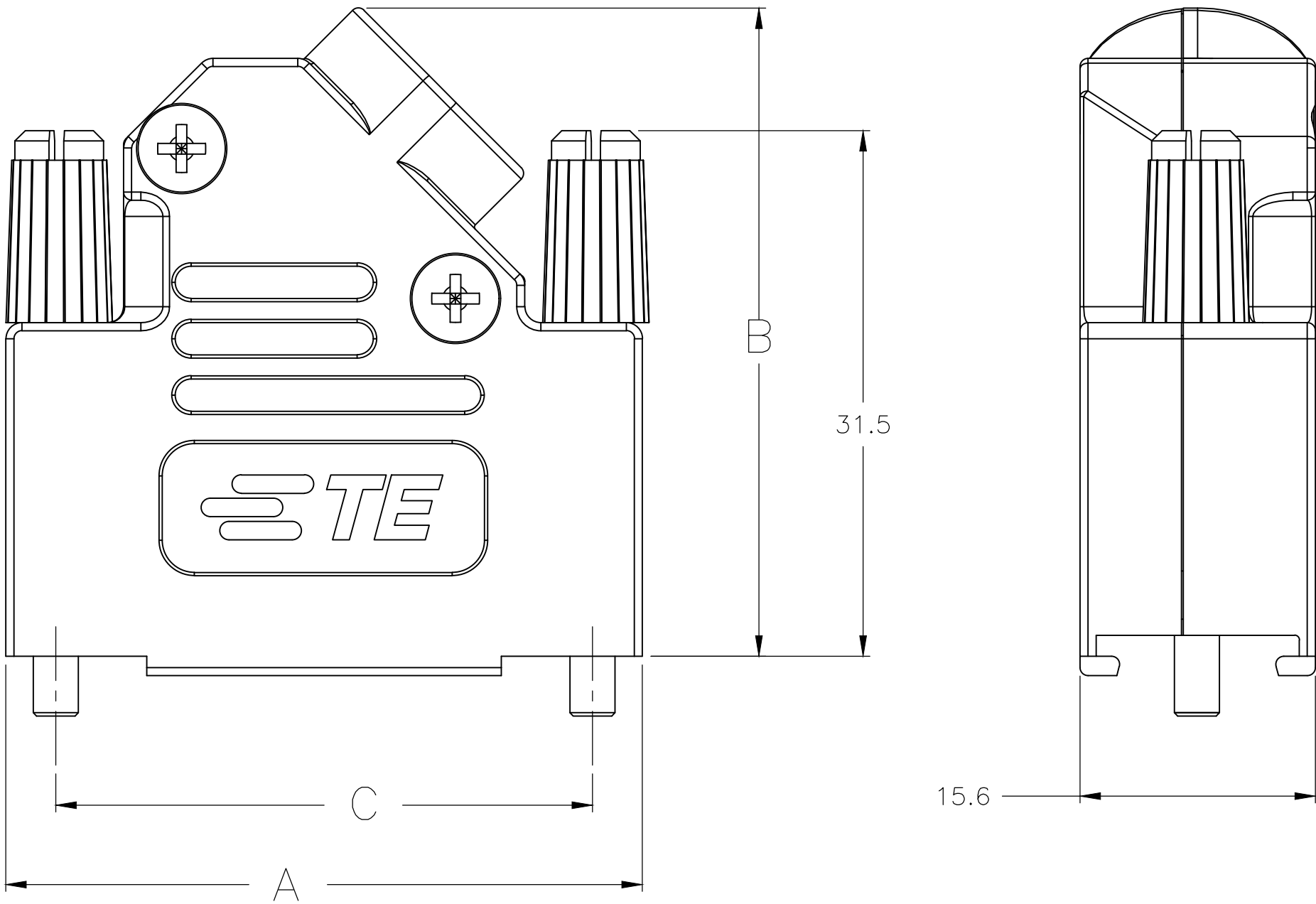
LOC	DIST	REVISIONS					
		P	LTR	DESCRIPTION	DATE	DWN	APVD
GP	00		F	REVISED PER ECO-18-006244	24APR2018	AP	DG

D

C

B

A



1.

FOR ASSEMBLY DETAILS, REFER TO LEAFLET 2227518-1.
2.

BULK PACKAGED BACKSHELL ASSEMBLIES: ITEMS 1 THRU 5, 100 TIMES QTY SHOWN IN TABLE IN 1 BAG FOR EACH ITEM. ALL BAGS IN 1 BOX WITH (1) 2227518-1 LEAFLET.
3.

INDIVIDUALLY PACKAGED SHELL ASSEMBLIES: 1 BAG CONTAINS ALL COMPONENTS FOR 1 COMPLETE ASSEMBLY. 100 BAGS PER BOX, (1) 2227518-1 LEAFLET PER BOX.
4.

TERMINATES 4.0-13.0 CABLE DIAMETERS.
5.

15 POSITION SHOWN.
6.



TRIVALENT CHROMIUM CHROMATE COATING OVER ZINC PLATING.
7.

JACKSCREW QUANTITY:
9 WAY ASSEMBLY: 1 JACKSCREW
15 WAY ASSEMBLY: 2 JACKSCREWS
25 WAY ASSEMBLY: 2 JACKSCREWS
37 WAY ASSEMBLY: 2 JACKSCREWS.
8.

OPTIONAL CABLE CRIMP KIT AVAILABLE FOR 6.0-9.5 DIAMETER CABLE. SEE 1478764.

5	JACKSCREW ASSEMBLY, 4-40	POLYAMIDE, UL94 V2 KNOB	BLACK	7
		CARBON STEEL SHAFT	6	
4	STRAIN RELIEF SET	POLYCARBONATE UL94 V0	BLACK	1
3	SELF TAPPING FIXING SCREW	CARBON STEEL	6	2
2	TOP BACKSHELL	ABS UL94 V0	NICKEL	1
1	BOTTOM BACKSHELL	ABS UL94 V0	NICKEL	1
ITEM	DESCRIPTION	MATERIAL	FINISH	QTY

3	63.5	40.2	69.5	PHILLIPS	4-40 UNC	4	37 WAY	5-2198618-4
3	47.0	40.2	53.0	PHILLIPS	4-40 UNC	3	25 WAY	5-2198618-3
3	33.3	40.2	39.3	PHILLIPS	4-40 UNC	2	15 WAY	5-2198618-2
3	25.0	36.2	31.0	PHILLIPS	4-40 UNC	1	9 WAY	5-2198618-1
2	63.5	40.2	69.5	PHILLIPS	4-40 UNC	4	37 WAY	3-2198618-7
2	47.0	40.2	53.0	PHILLIPS	4-40 UNC	3	25 WAY	2-2198618-5
2	33.3	40.2	39.3	PHILLIPS	4-40 UNC	2	15 WAY	1-2198618-5
2	25.0	36.2	31.0	PHILLIPS	4-40 UNC	1	9 WAY	2198618-9
PACKAGING	C	B	A	SELF TAPPING FIXING SCREW TYPE	JACKSCREW THREAD	SHELL SIZE	POSITION	PART NUMBER

THIS DRAWING IS A CONTROLLED DOCUMENT. DIMENSIONING AND TOLERANCING PER ASME Y14.5M-2009				DWN C. VALENTINE 09DEC2011		 TE Connectivity			
				CHK C. ROHDE 08DEC2011					
DIMENSIONS: mm		TOLERANCES UNLESS OTHERWISE SPECIFIED:		APVD C. ROHDE 08DEC2011		NAME SHIELDED PLASTIC BACKSHELL 45 DEGREE ENTRY —			
		0 PLC ± 0.5		PRODUCT SPEC					
		1 PLC ± 0.5		—					
		2 PLC ± 0.5		APPLICATION SPEC		SIZE A2			
		3 PLC ± 0.5		—				CAGE CODE 00779	
		4 PLC ± 0.5		—					
MATERIAL SEE TABLE		FINISH SEE TABLE		WEIGHT		RESTRICTED TO —			
CUSTOMER DRAWING				SCALE 1:1		SHEET 1 OF 1			
				REV F					

Mouser Electronics

Authorized Distributor

Click to View Pricing, Inventory, Delivery & Lifecycle Information:

[TE Connectivity:](#)

[3-2198618-7](#)