



General Specifications

Motor Protection:

Auto Restart/Polarity Protection

Insulation Resistance: 10M Ω or over with a DC500V Megger

Dielectric Withstand Voltage: AC 700V 1s

Allowable Ambient Temperature Range:

-10°C ~ +60°C (Operating)

-40°C ~ +70°C (Storage)

(non-condensing environment)

Expected Life

Failure Rate: 10%

25°C 100,000 Hours (B00, E00)

Outline

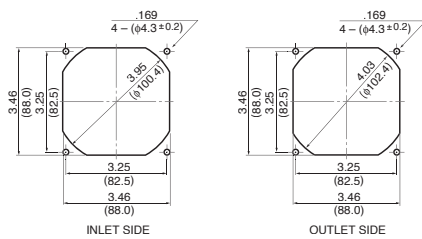
Units: $\frac{\text{inch}}{\text{(mm)}}$



Characteristic Curves



Panel Cut-outs



Material

Casing : Plastic (Black) 94V-0

Impeller : Plastic (Black) 94V-0

Bearing : Ball Bearing

Lead Wire : UL1007, AWG24, +Red, -Black

Specifications

MODEL	Product No.	Rated Voltage	Operating Voltage	Current	Input Power	Speed	Max. Air Flow		Max. Static Pressure		Noise	Mass
		(V)	(V)	(A) ¹	(W) ¹	(min ⁻¹) ¹	CFM ¹	(m ³ /min) ¹	in H ₂ O	(Pa) ¹	(dB) ¹	(g)
3612KL-04W-B30	X00	12	6.0 ~ 13.8	0.21	2.52	2600	47.3	1.34	.16	41.0	34.0	230
3612KL-04W-B40	X00	12	6.0 ~ 13.8	0.31	3.72	3200	58.6	1.66	.24	61.0	38.0	230
3612KL-04W-B50	X00	12	6.0 ~ 13.8	0.47	5.64	3800	69.9	1.98	.33	83.0	43.5	230
3612KL-04W-B60	X00	12	10.5 ~ 13.2	0.48	5.76	4000	70.5	2.00	.38	96.0	44.0	230
3612KL-05W-B30	X00	24	15.0 ~ 27.6	0.10	2.40	2600	47.3	1.34	.16	41.0	34.0	230
3612KL-05W-B40	X00	24	15.0 ~ 27.6	0.16	3.84	3200	58.6	1.66	.24	61.0	38.0	230
3612KL-05W-B50	X00	24	15.0 ~ 27.6	0.25	6.00	3800	69.9	1.98	.33	83.0	43.5	230
3612KL-05W-B60	X00	24	10.0 ~ 27.6	0.23	5.52	3800	47.3	1.98	.33	83.0	43.5	230

Mouser Electronics

Authorized Distributor

Click to View Pricing, Inventory, Delivery & Lifecycle Information:

NMB Technologies:

[3612KL-04W-B40-E00](#) [3612KL-04W-B50-E00](#) [3612KL-04W-B59-B00](#) [3612KL-05W-B59-E00](#) [3612KL-04W-B30-B00](#)
[3612KL-05W-B50-B00](#) [3612KL-05W-B60-E00](#) [3612KL-05W-B70-B00](#) [3612KL-04W-B59-E00](#) [3612KL-05W-B30-E00](#)
[3612KL-05W-B60-B00](#) [3612KL-05W-B49-E50](#) [3612KL-05W-B50-E00](#) [3612KL-04W-B49-E50](#) [3612KL-04W-B59-E50](#)
[3612KL-05W-B59-B00](#) [3612KL-04W-B49-B00](#) [3612KL-05W-B40-E00](#) [3612KL-05W-B59-E50](#) [3612KL-07W-B49-E50](#)
[3612KL-05W-B30-B00](#) [3612KL-04W-B59-B50](#) [3612KL-05W-B40-B00](#) [3612KL-04W-B39-E50](#) [3612KL-04W-B40-B00](#)
[3612KL-04W-B49-B50](#) [3612KL-04W-B30-E00](#) [3612KL-07W-B59-E50](#) [3612KL-05W-B59-B50](#) [3612KL-04W-B39-B00](#)
[3612KL-04W-B50-B00](#) [3612KL-04W-B39-B50](#) [09232KA-24P-AA-00](#) [09232KA-12L-AA-00](#) [09232KA-24N-AL-00](#)
[09232KA-24M-EA-00](#) [09232KA-12M-EA-00](#) [09232KA-24L-AA-00](#) [09232KA-12M-AT-00](#) [09232KA-12N-EA-00](#)
[09232KA-24M-AA-00](#) [09232KA-24Q-AA-00](#) [09232KA-24N-ET-00](#) [09232KA-12M-ET-00](#) [09232KA-12N-AA-00](#)
[09232KA-24N-EL-00](#) [09232KA-12L-AT-00](#) [09232KA-12M-AL-00](#) [09232KA-24L-EA-00](#) [09232KA-12N-ET-00](#)
[09232KA-12L-AL-00](#) [09232KA-24N-AA-00](#) [09232KA-12N-EL-00](#) [09232KA-48M-ET-00](#) [09232KA-24N-AT-00](#)
[09232KA-12L-EA-00](#) [09232KA-24N-EA-00](#) [09232KA-12L-ET-00](#) [09232KA-48N-ET-00](#) [09232KA-12N-AL-00](#)
[09232KA-24P-EA-00](#) [09232KA-24M-ET-00](#) [09232KA-12N-AT-00](#) [09232KA-12M-AA-00](#)