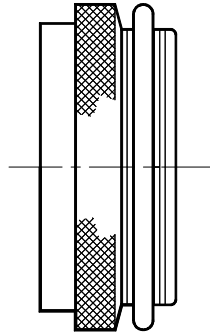


REVISIONS			
LTR	DESCRIPTION	DATE	APPROVED
N/C	INITIAL RELEASE	NOV 00	KJW



PANCAKE TINEL-LOCK ADAPTER

NOTES:

1. THIS PRODUCT IS DESIGNED TO TERMINATE A BRAIDED CABLE SHIELD AND A HEAT SHRINKABLE LIPPED BOOT TO A CONNECTOR.
- ② SEE DRAWING "TR" FOR DETAILS ON TINEL-LOCK RING. RINGS ARE DESIGNED TO BE HEATED ELECTRICALLY. ALL RINGS ARE MARKED WITH THERMOCHROMIC PAINT WHICH CHANGES COLOR WHEN INSTALLATION TEMPERATURE IS REACHED.
3. ADAPTER TO BE PERMANENTLY MARKED WITH CODE IDENT, NO. AND PART NO. LESS RING DESIGNATOR (E.G.: 06090-PNT40AB00-1412). RINGS SHALL BEAR NO MARKING.
- ④ TINEL-LOCK RING IS TO BE SPECIFIED IN PART NUMBER WHEN ORDERING.
- ⑤ ADAPTER MATES TO MIL-C-38999, SERIES III AND IV, CLASS C, F, K AND W, D38999/20, /24, /26, /40, /46 AND /47 CONNECTORS, AND WHEN SO MATED SHALL PROVIDE A WATER-TIGHT SEAL MEETING THE REQUIREMENTS OF MIL-C-85049 PARA 3.5.7.

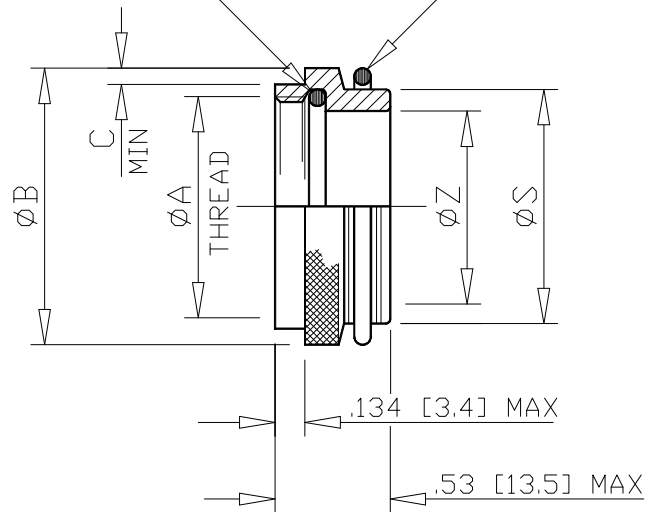
If this document is printed it becomes uncontrolled.
Check for the latest revision.

SPECIFICATION CONTROL DRAWING

UNLESS OTHERWISE SPECIFIED DIMENSIONS ARE IN INCHES. METRIC DIMENSIONS ARE IN BRACKETS. DECIMALS .XXX ± — [mm] .XX ± — [mm] .X ± — [mm] ANGLES .X ± —	DRAWN IRT	DATE OCT 00	tyco /Electronics			
	CHECKED KJW	DATE OCT 00				
	APPROVED KJW	DATE OCT 00	TITLE TINEL-LOCK™ ADAPTER (PANCAKE CODE 40)			
	APPROVED	DATE				
	CAD NAME 85007-41					
THIRD ANGLE PROJECTION			SIZE A	CODE IDENT. NO. 06090	DWG. NO. PNT40	REV N/C
DO NOT SCALE THIS DWG					SHEET 1 OF 3	

O-RING - SILICONE

TINEL-LOCK RING (4)



If this document is printed it becomes uncontrolled.
Check for the latest revision.

SIZE	CODE IDENT. NO.	DWG. NO.	REV
A	06090	PNT40	N/C
DO NOT SCALE THIS DWG		SHEET 2 OF 3	

TABLE I						
ORDER NUMBER	SHELL SIZE		MAX ENTRY 4 SIZE	ϕ A METRIC THREAD CLASS 6H	ϕ B MAX	C MIN
	COM	MIL				
08	9	A	05	M12 × 1.0	.71 [18.0]	.040 [1.00]
10	11	B	07	M15 × 1.0	.83 [21.0]	.040 [1.00]
12	13	C	10	M18 × 1.0	.95 [24.1]	.040 [1.00]
14	15	D	12	M22 × 1.0	1.10 [27.9]	.040 [1.00]
16	17	E	14	M25 × 1.0	1.28 [32.5]	.065 [1.65]
18	19	F	16	M28 × 1.0	1.42 [36.1]	.065 [1.65]
20	21	G	18	M31 × 1.0	1.50 [38.1]	.065 [1.65]
22	23	H	20	M34 × 1.0	1.62 [41.1]	.065 [1.65]
24	25	J	22	M37 × 1.0	1.73 [43.9]	.065 [1.65]

TABLE II			
ENTRY SIZE	ϕ Z	ϕ S	
	+0.10 -0.020 [+0.25] [-0.50]		
05	.312 [7.92]	.438 .432	[11.13] [10.97]
07	.437 [11.09]	.563 .556	[14.31] [14.12]
10	.562 [14.27]	.752 .742	[19.11] [18.84]
12	.687 [17.45]	.877 .867	[22.28] [22.02]
14	.812 [20.62]	1.002 .991	[25.46] [25.17]
16	0.922 [23.42]	1.127 1.116	[28.63] [28.34]
18	1.047 [26.59]	1.252 1.241	[31.81] [31.52]
20	1.172 [29.77]	1.377 1.366	[34.98] [34.69]
22	1.297 [32.94]	1.502 1.488	[38.15] [37.79]

If this document is printed it becomes uncontrolled.
Check for the latest revision.

SIZE	CODE IDENT. NO.	DWG. NO.	REV
A	06090	PNT40	N/C
DO NOT SCALE THIS DWG		SHEET 3 OF 3	

Mouser Electronics

Authorized Distributor

Click to View Pricing, Inventory, Delivery & Lifecycle Information:

[TE Connectivity:](#)

[PNT40AC00-1007AI](#)