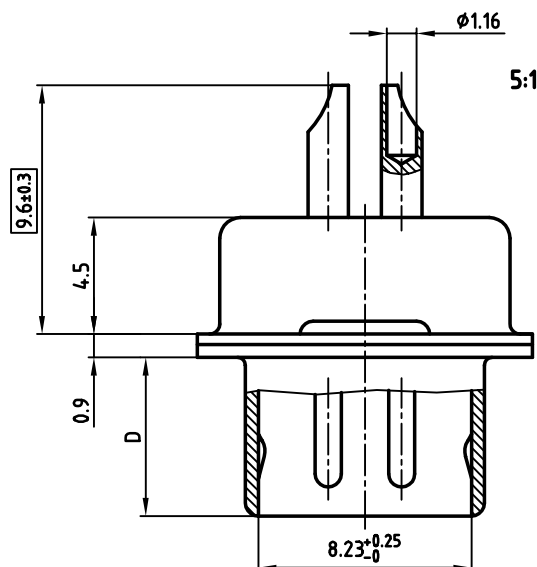
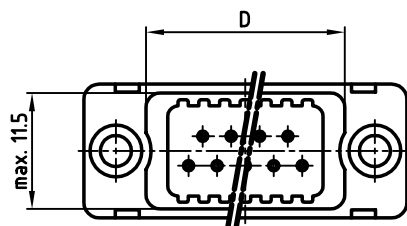
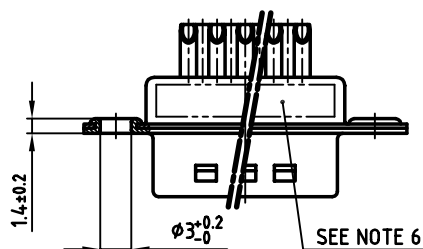
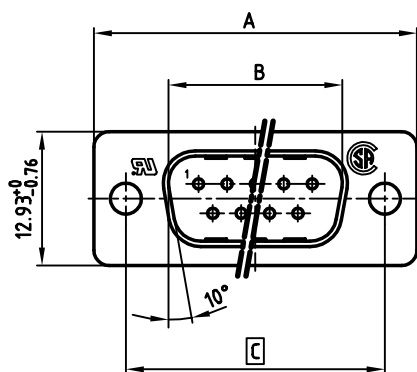


used for: D-SUB FILTER

| POS. | A -0.76 | B -0.25 | C | max. D | Part NO. |
|------|---------|---------|--------------------------|--------|------------|
| 9 | 31.19 | 16.46 | 25.00 $^{+0.12}_{-0.13}$ | 19.60 | 241A26920X |
| 15 | 39.52 | 24.79 | 33.30 $^{+0.15}_{-0.1}$ | 27.90 | 241A26930X |
| 25 | 53.42 | 38.50 | 47.04 ± 0.13 | 41.60 | 241A26940X |
| 37 | 69.70 | 54.96 | 63.50 ± 0.13 | 58.00 | 241A26950X |



NOTES:

- METALSHELLS: STEEL; min. 320µ" TIN
- INSULATORS: PBT GF UL 94 V-0, BLACK
- CONTACTS: COPPER ALLOY
PLATING: min. 8µ" HARD GOLD OVER min. 50µ" NICKEL
SOLDER CUP ACCEPTS CABLE AWG 20
- CAPACITANCE: 830pF ±20%
- DIELECTRIC WITHSTANDING VOLTAGE: 424 VDC
- CONNECTOR IS PART MARKED: PART-NO. CONEC Y/WW
- = CRITICAL DIMENSION

| | |
|--|--------|
| APPROVAL * FREIGABE * DEBLOCAGE * AUTOR/ZACON * APPROVAL | |
| CUSTOMER APPROVAL DATE: | |
| NAME: | TITLE: |
| COMPANY NAME: | |
| APPROVAL * FREIGABE * DEBLOCAGE * AUTOR/ZACON * APPROVAL | |

THIS DRAWING MAY NOT BE COPIED OR
REPRODUCED IN ANY WAY, AND MAY NOT
BE PASSED ON TO A THIRD PARTY WITHOUT
WRITTEN PERMISSION.
OWNERSHIP AND COPYRIGHT OF CONEC GmbH
DO NOT ALTER CAD DRAWING BY HAND

| rev. | description | date | name |
|------|-------------|------|------|
| | | | |
| | | | |
| | | | |
| | | | |
| | | | |
| | | | |
| | | | |
| | | | |
| | | | |

| tolerance | date | name |
|-----------|-----------|--------------|
| 2000 | 21.08. | Parei |
| drawn | 21.08. | Mickenbecker |
| appd. | 21.08. | Mickenbecker |
| norm | DIN 41652 | |
| d-old | | |

| | |
|---|--------------------|
| scale: | 2:1 (5:1) |
| material: | SEE NOTES |
| title: D-SUB FILTER MALE 9-37pos. SOLDER CUP | |
| dwg no: | AutoCAD 2000 DIN-A |
| 24K1A031A | |
| part no: | SEE TABLE |

Mouser Electronics

Authorized Distributor

Click to View Pricing, Inventory, Delivery & Lifecycle Information:

[CONEC:](#)

[241A26940X](#)