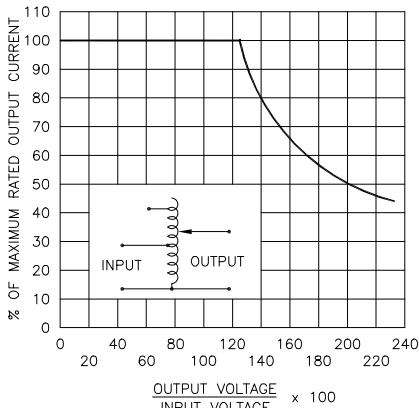
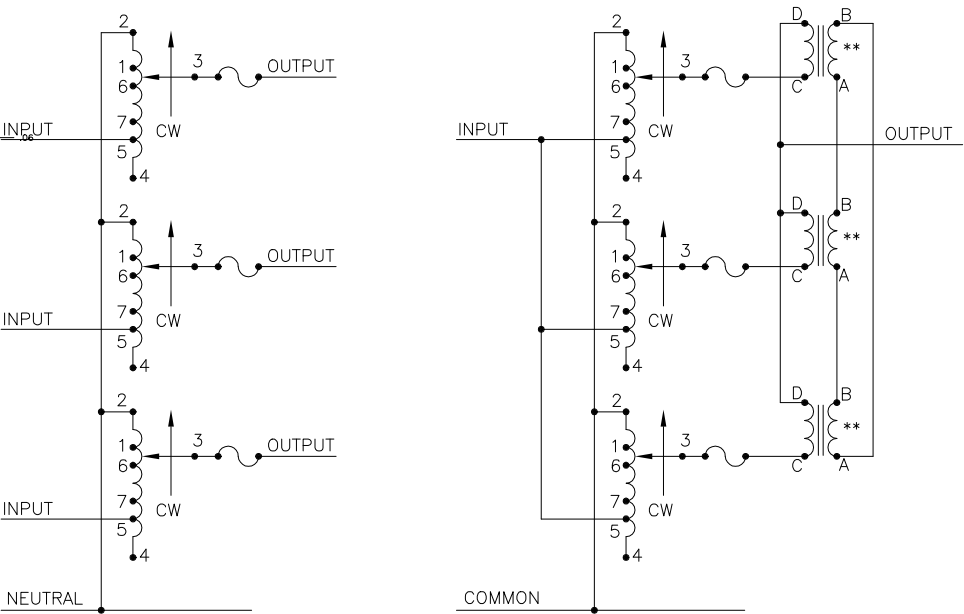
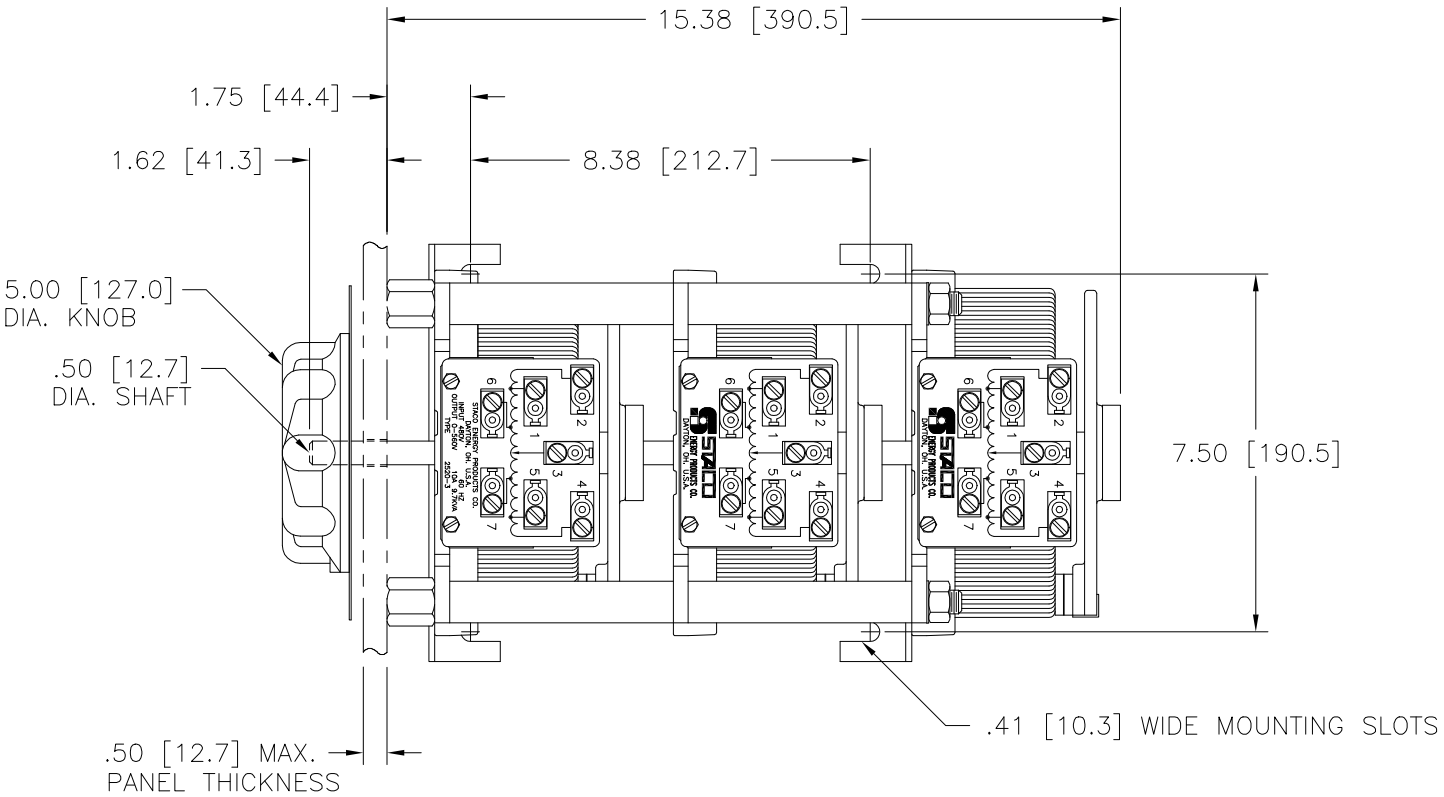
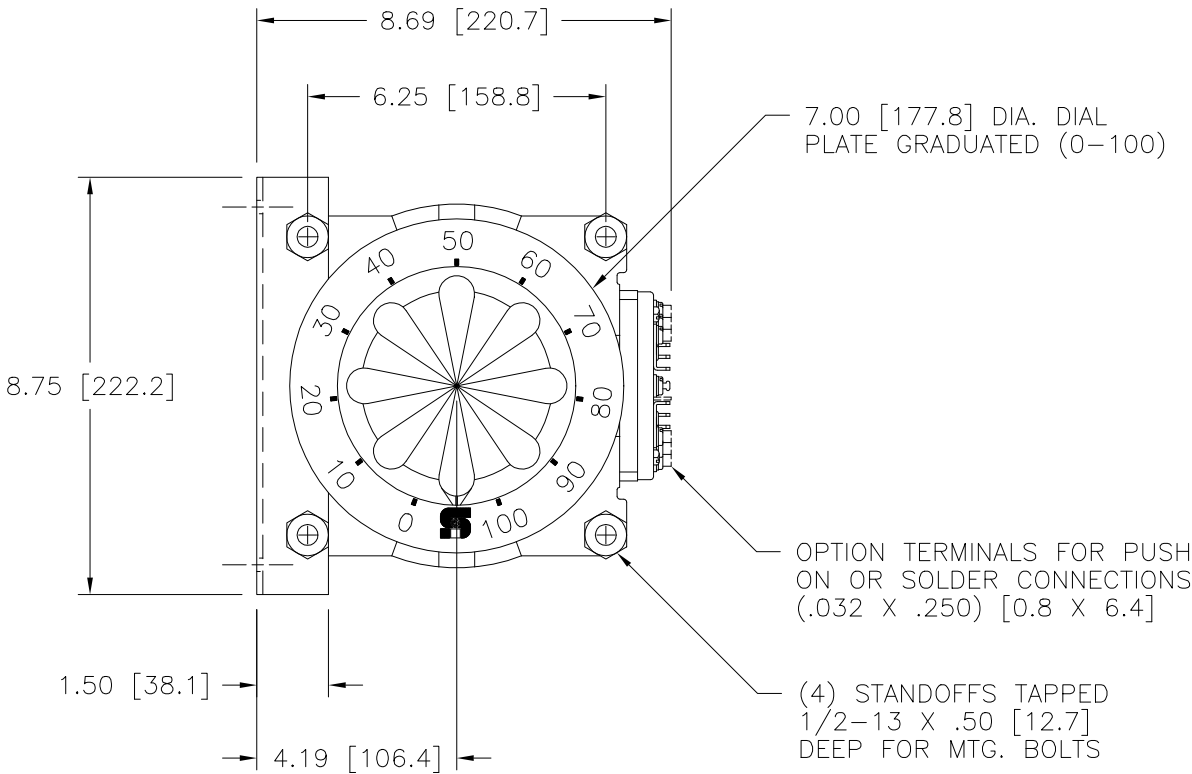


DWG. SIZE	D	DWG. NO.	031-5425
REVISIONS			
SYM.	E.C.N.	DATE	APVD.
A		2/11/92	
B		23899 [12/18/98]	
ADDED FIG. A			



MAXIMUM OUTPUT CURRENT IN OUTPUT VOLTAGE RANGE FROM 0 TO 25% ABOVE LINE VOLTAGE. AT HIGHER OUTPUT VOLTAGES, THE OUTPUT CURRENT MUST BE REDUCED ACCORDING TO THE DERATING CURVE FIGURE A.

§ MAXIMUM KVA AT MAXIMUM OUTPUT VOLTAGE AND CORRESPONDING DERATED OUTPUT CURRENT. MAXIMUM KVA FOR LOWER VOLTAGES MAY BE CALCULATED FROM DERATING CURVE FIGURE A.

++ LINE TO LINE VOLTAGE.

** REQUIRES THREE 52LAC PARALLELING CHOKES (NOT SUPPLIED).

π IF GANGED UNITS ARE USED IN A SYSTEM THAT ORDINARILY HAS A COMMON NEUTRAL OR GROUND BETWEEN SOURCE AND LOAD, THE NEUTRAL OR GROUND MUST BE CONNECTED TO THE COMMON TERMINALS OF THE VARIABLE TRANSFORMER ASSEMBLY. IF THE SYSTEM HAS NO NEUTRAL, THE LOAD MUST BE BALANCED OR THE TRANSFORMER WILL BE DAMAGED.

■ JUMPER PROVIDED IN STANDARD COMMON POSITION AND SHOULD BE MOVED OR REMOVED AS REQUIRED.

SPECIFICATIONS												
WIRING	INPUT		OUTPUT				SHAFT ROTATION TO INCREASE VOLTAGE	TERMINAL CONNECTIONS				
	VOLTS	HERTZ	VOLTS	CONSTANT CURRENT LOAD		CONSTANT IMPEDANCE LOAD		FOR INCREASING VOLTAGE AS VIEWED FROM BASE END ■				
				MAX. AMPS	MAX. KVA	MAX. AMPS		MAX. KVA	INPUT	JUMPER	OUTPUT	
SINGLE PHASE PARALLEL **	240	50/60	0-240	30	7.20	39	9.30	CW	2-2-2, 4-4-4	——	4-D	
THREE PHASE WYE π	120	50/60	0-280	30#	3.60 §	——	——	CW	7-7-7, 4-4-4	——	4-D	
	480 ++	50/60	0-480	10	8.30	13	10.81	CW	2-2-2	4-4-4	3-3-3	
	60	50/60	0-560	10	9.70	——	——	CW	1-1-1	4-4-4	3-3-3	
240 ++	60	0-560	10#	4.20 §	——	——	CW	7-7-7	4-4-4	3-3-3		
UNLESS OTHERWISE SPECIFIED, TOLERANCE IS ±			UNITS		SPEC. CONTROL DRAWING VARIABLE TRANSFORMER TYPE: 2520-3							
DECIMALS .XX .0005			IN [mm]									
MATERIAL			ALL DIMENSIONS APPLY AFTER PLATING									
The information and design disclosed herein was originated by and is the property of STACO ENERGY PRODUCTS CO., which reserves all patent, proprietary, design, manufacturing, reproduction, use and sale rights thereto, and to any article disclosed therein except to the extent rights are expressly granted to others. The foregoing does not apply to vendor proprietary parts.												
DRAWN BY K. TOLLIVER			DATE 2/11/92		FIRST USED ON		DO NOT SCALE DWG.		CUSTOMER APPROVAL		DATE	
CHECKER			DATE		WEIGHT APPROX. 68 LBS.		CODE IDENT. NO. 83008		DWG. SIZE		DWG. NO.	
ENGINEER			DATE		SCALE .5=1		SHEET 1 OF 1		D		031-5425	

Mouser Electronics

Authorized Distributor

Click to View Pricing, Inventory, Delivery & Lifecycle Information:

[Staco:](#)

[2520-3](#)