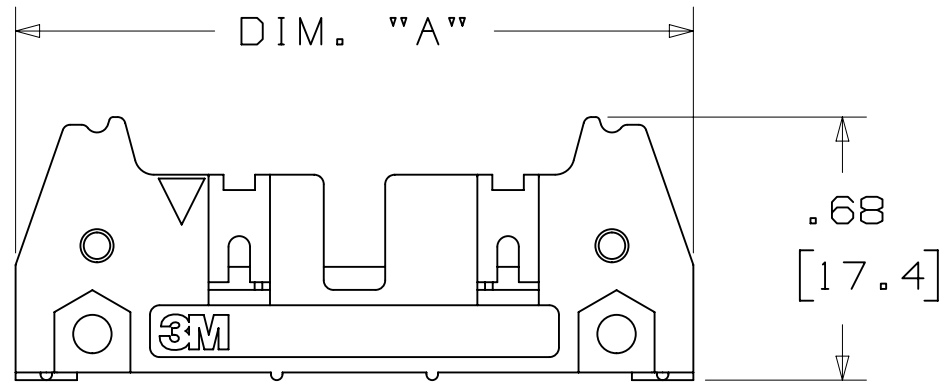


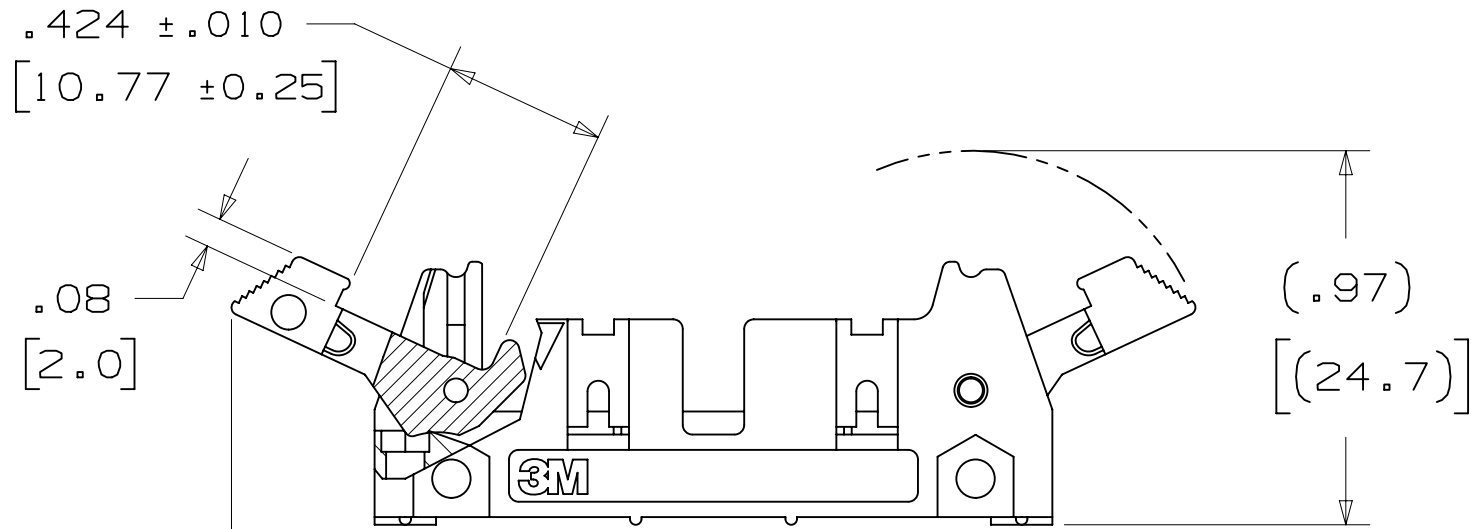
3M™ THREE-WALL HEADER, 3000 SERIES

.100" X .100" LATCH/EJECTOR, STRAIGHT AND RIGHT ANGLE



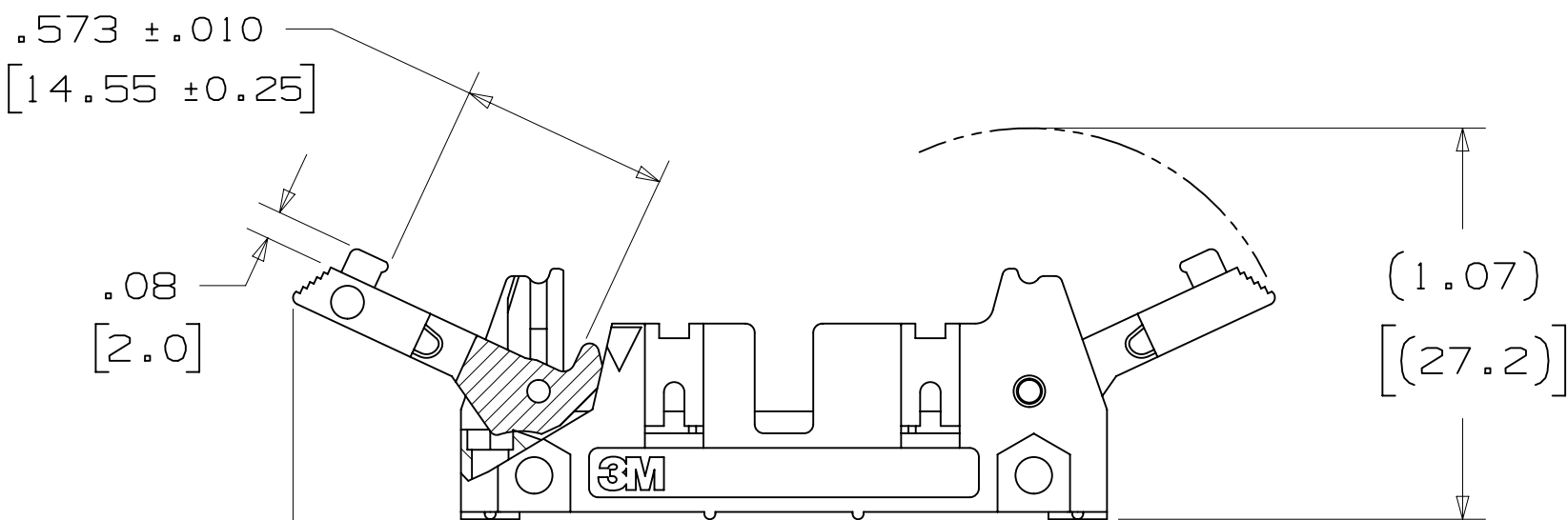
-X0XX

HEADER WITHOUT LATCH EJECTOR



-X2XX

HEADER WITH SHORT LATCH EJECTOR
FOR 3M SOCKETS WITHOUT STRAIN RELIEF



-X3XX

HEADER WITH LONG LATCH EJECTOR
FOR 3M SOCKETS WITH STRAIN RELIEF

2 PHYSICAL :

INSULATOR: GLASS FILLED POLYESTER (PCT)
MATERIAL: UL94V-0
FLAMMABILITY: COLOR: BLACK
CONTACT: MATERIAL: COPPER ALLOY
PLATING: UNDER PLATING: 100μ" [2.54μm] NICKEL-OVERALL
WIPING AREA: 30μ" [0.76μm] AVG. GOLD
SOLDER TAILS: 200μ" [5.08μm] TIN LEAD OR MATTE TIN (SEE ORDERING INFORMATION)
MARKINGS: 3M LOGO, PART IDENTIFICATION NUMBER AND ORIENTATION TRIANGLE

2 ELECTRICAL :

CURRENT RATING: 5.00A, 1 CONTACT POWERED
3.00A, 6 CONTACTS POWERED
1.75A, ALL CONTACTS POWERED
RATING CONDITIONS: EIA-364-070 METHOD 2, 30°C MAXIMUM
TEMPERATURE RISE, 20% DERATED. REFERENCE APPROPRIATE
3M PRODUCT SPECIFICATION FOR DETAILED CURRENT DERATING
CURVES.

INSULATION RESISTANCE: >1 X 10⁹Ω AT 500 V_{DC}
WITHSTANDING VOLTAGE: 1,000V_{RMS} AT SEA LEVEL

2 ENVIRONMENTAL :

TEMPERATURE RATING: -55°C TO 105°C
PROCESS RATING: 260°C, PER J-STD-020C, SINGLE PASS
MOISTURE SENSITIVITY LEVEL: 1 (PER J-STD-020C)

ORDERING INFORMATION

X3XXX-XXXXXX

N= HIGH TEMP BLACK (PCT)/(RB PLATING REQ'D)
BLANK= (UB PLATING)

3M PART NUMBER:
(SEE TABLE 1)

PIN CONFIGURATION:
1 = RIGHT ANGLE SOLDER TAILS
2 = STRAIGHT SOLDER TAILS

PLATING:
RB = 30μ" [0.76μm] GOLD AND 200μ" [5.08μm] MATTE TIN
(APP. E1 & C1 APPLY)
UB = 30μ" [0.76μm] GOLD AND 200μ" [5.08μm]
TIN LEAD (APP. E3 & C2 APPLY)

TAIL:
02 = FOR .062 [1.57] THICK BOARD
03 = FOR .094 TO .125 [2.39 TO 3.18] THICK BOARD
K2 = KINKED FOR .062 [1.57] THICK BOARD

LATCH/EJECTOR SYSTEM:
0 = NO LATCH/EJECTOR INSTALLED
2 = SHORT ROLL PIN LATCH/EJECTORS
3 = LONG ROLL PIN LATCH/EJECTORS

3M ELECTRONIC MATERIALS SOLUTIONS DIVISION
INTERCONNECT SOLUTIONS
<http://www.3mconnectors.com>

3M IS A TRADEMARK OF 3M COMPANY.
FOR TECHNICAL, SALES OR ORDERING
INFORMATION CALL 800-225-5373

- * MILITARY (WITH 3M'S N3518 POLARIZING KEY) AND CENTERBUMP POLARIZATION.
- * LOW PROFILE.
- * OPTIONAL EJECTOR LATCHES.
- * MOUNTING HOLES FOR SECURING HEADER TO BOARD.
- * THREE WALL SHROUD PROVIDES DESIGN FLEXIBILITY.
- * SOLDER TAIL AND WRAP TAIL OPTIONS.
- * OPTIONAL POLARIZING POSTS AVAILABLE.
- * HIGH TEMPERATURE INSULATOR SUITABLE FOR "NO LEAD" SOLDERING OPERATIONS.
- * SUITABLE FOR REFLOW SOLDERING USING "PASTE IN HOLE" TECHNIQUES.

1. REGULATORY INFORMATION:
ROHS COMPLIANT. SEE THE
REGULATORY INFORMATION
APPENDIX (RIA) IN THE
"ROHS COMPLIANCE" SECTION
OF WWW.3MCONNECTORS.COM FOR
COMPLIANCE INFORMATION.

2. IN THE EVENT OF CONFLICT
BETWEEN THIS DATA AND THAT
CONTAINED IN THE PRODUCT
SPECIFICATION, THE PRODUCT
SPECIFICATION TAKES PRECEDENT.

3. NOTCHES A & C WILL ACCOMODATE
3M POLARIZING KEY: N3518).

4. MOUNTING HARDWARE:
FROM SOLDER SIDE OF PC BOARD
USE #4-24 THREAD CUTTING SCREW
(3M PART #3341-5) WITH
Ø.116 [2.95] MOUNTING HOLE.
FOR RIGHT ANGLE VERSION ONLY:
#2-56 BOLT AND NUT (3M PART
#3341-6) WITH Ø.106 [2.69]
MOUNTING HOLE MAY BE USED.

5. THE RECOMMENDED PCB HOLE SIZE
FOR THE KINKED TAIL POSITIONS
ON THE .112 SOLDER TAIL
CONNECTOR IS Ø.035±.002.
(SEE K2 VERSION).

DIMENSIONS: INCHES [MM]
[MM] IS REF. ONLY

DESIGN REFERENCE	NEXT ASSEMBLY	REV	ECO	ISSUE DATE AND DESCRIPTION	DRFT	CHKD
CODES				DATE	DATE	DATE
				AUG 05,2014		
				APPR		
				R. SCHERER		
				DATE		
				SEP 05,2014		
DIVISION	DIVISION CODE					
Interconnect Solutions	EMSD					
DO NOT SCALE DRAWING	SCALE 2 1	TOLERANCES EXCEPT AS NOTED				
		INCHES				
		.0 ±.01				
		.000 ±.005				
		.0000 ±				
THIRD ANGLE PROJECTION		MILLIMETERS				
		0 ±				
		.0 ±.3				
		.00 ±.13				
		.000 ±				
MAX SURFACE ROUGHNESS		ANGLES				
1X SURFACES						
2X MARKED ONLY						
TITLE		CAGE NUMBER	SIZE	DRAWING NO.	REV.	
HEADER, 3-WALL, .100 X .100 LATCH/EJECTOR, STRAIGHT & RA		D	78-5100-0771-5	H		
MODEL		3000 SERIES		DET	LISTS	YES X NO
				SHT	1	OF 4

UL FILE NO: E68080

.100" X .100" LATCH/EJECTOR, STRAIGHT AND RIGHT ANGLE

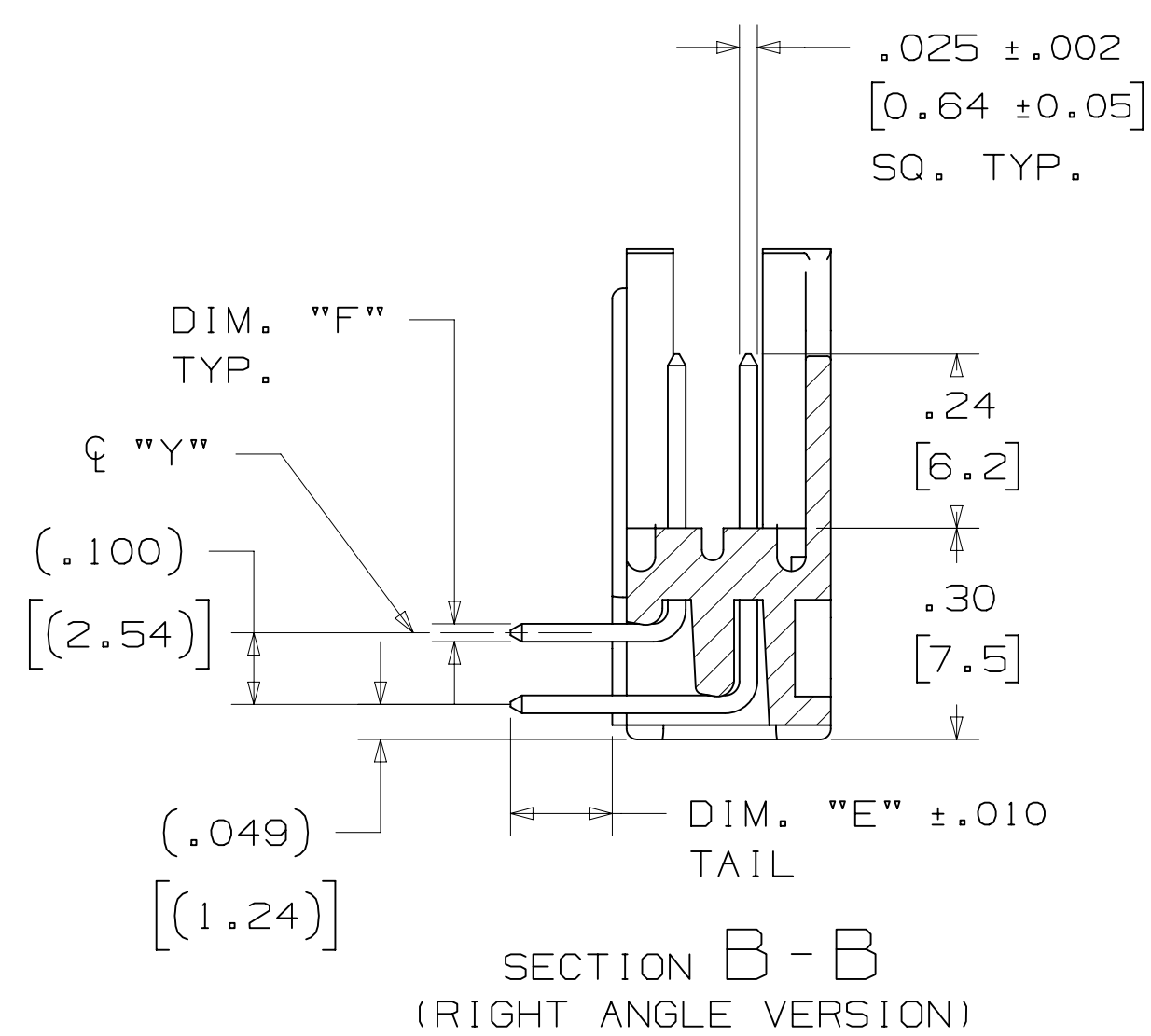
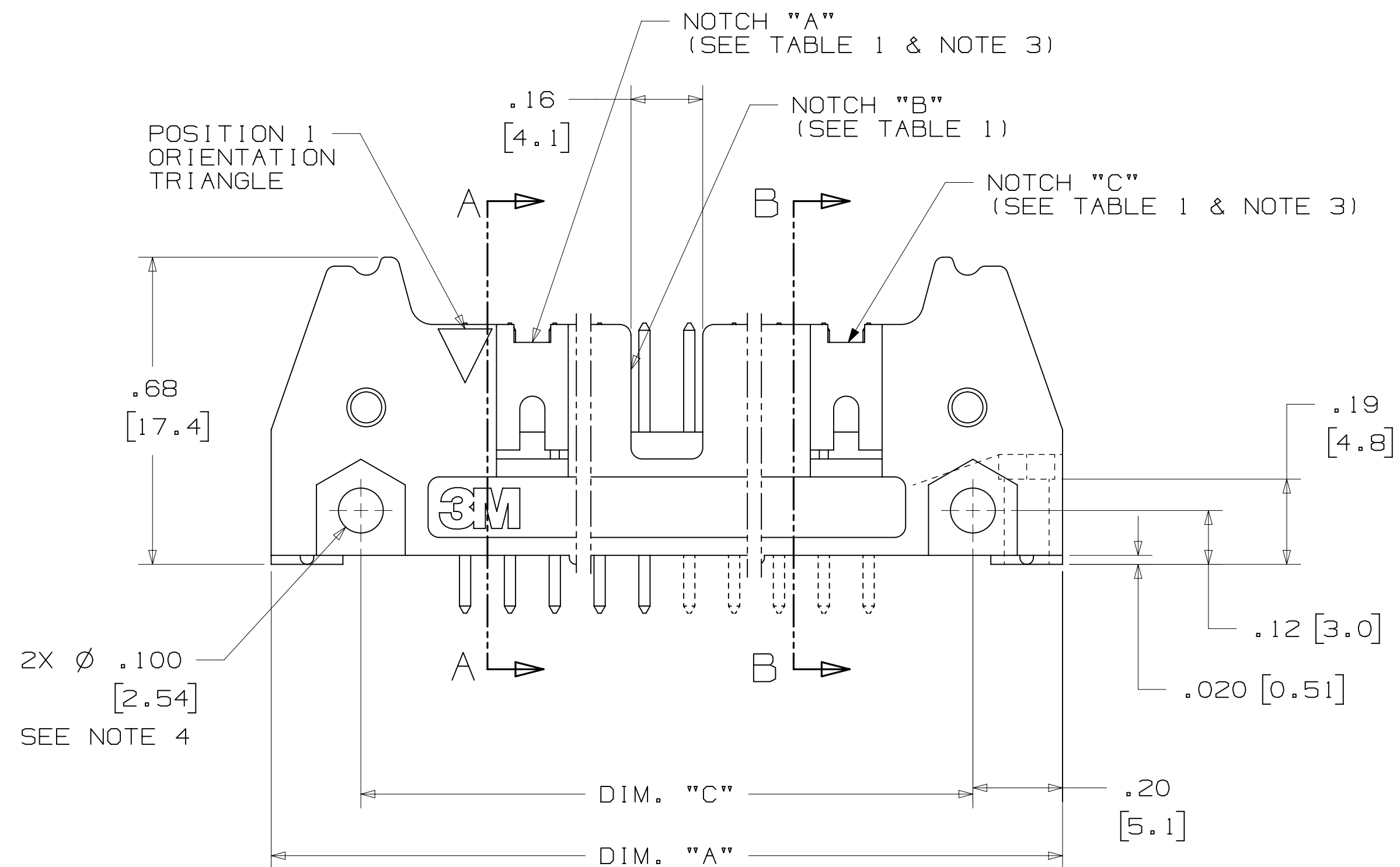
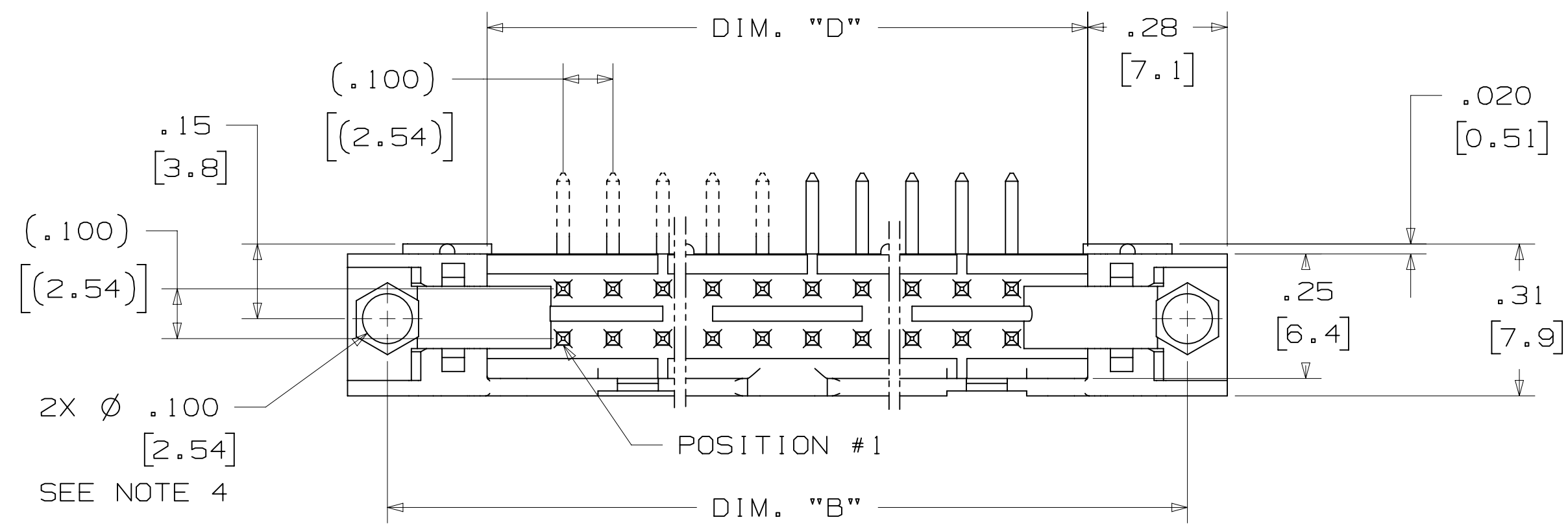





TABLE 1							
PIN QTY.	3M PART NUMBER	DIM. "A"	DIM. "B"	DIM. "C"	DIM. "D"	POLARIZING NOTCHES	PIN QTY.
10	3793	1.26 [32.1]	1.105 [28.04]	.865 [21.97]	.71 [18.0]	BC	10
14	3314	1.46 [37.2]	1.305 [33.12]	1.065 [27.05]	.91 [23.1]	BC	14
16	3408	1.56 [39.7]	1.405 [35.66]	1.165 [29.59]	1.01 [25.6]	ABC	16
20	3428	1.76 [44.8]	1.604 [40.74]	1.365 [34.67]	1.21 [30.7]	ABC	20
26	3429	2.06 [52.4]	1.905 [48.36]	1.665 [42.29]	1.51 [38.3]	ABC	26
34	3431	2.46 [62.6]	2.305 [58.52]	2.065 [52.45]	1.91 [48.5]	ABC	34
40	3432	2.76 [70.2]	2.605 [66.14]	2.365 [60.07]	2.21 [56.1]	ABC	40
50	3433	3.26 [82.9]	3.105 [78.84]	2.865 [72.77]	2.71 [68.8]	ABC	50
60	3372	3.76 [95.6]	3.605 [91.54]	3.365 [85.47]	3.21 [81.5]	ABC	60
64	3764	3.96 [100.7]	3.805 [96.62]	3.565 [90.55]	3.41 [86.6]	ABC	64

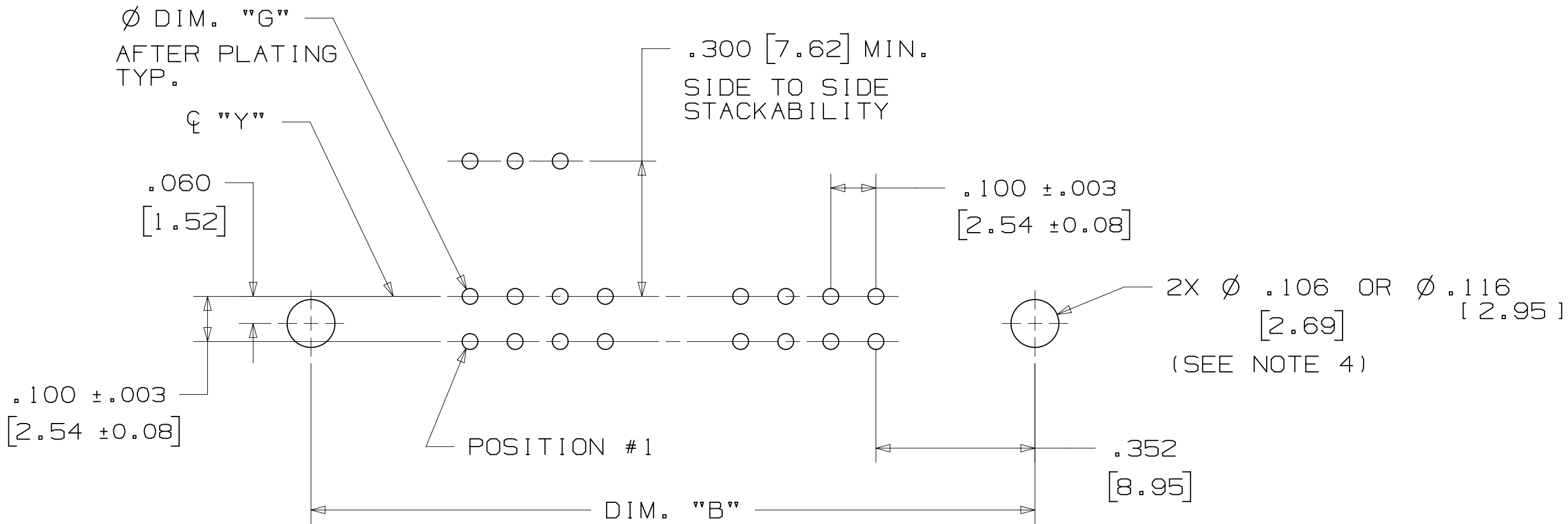
TABLE 2						
3M PART NUMBER SUFFIX	CONTACT TAIL	DIM. "E"	PIN CROSS SECTION			DIM. "G"
-1XX2	.062 [1.57] THICK PC BOARD	.112 [2.84]	DIM. "F"	DIAGONALS	CORNER RADIUS	.035+/- .003 [.89] SEE NOTE 5
-2XX2			.0245+/- .0005 [.622]	.028+/- .001 [.71]	.0075 REF. [.191]	
-1X03	.094 [2.39] TO .125 [3.18] THICK PC BOARD	.155 [3.94]	.0245+/- .0005 [.622]	.028+/- .001 [.71]	.0075 REF. [.191]	.035+/- .003 [.89]
-2X03						



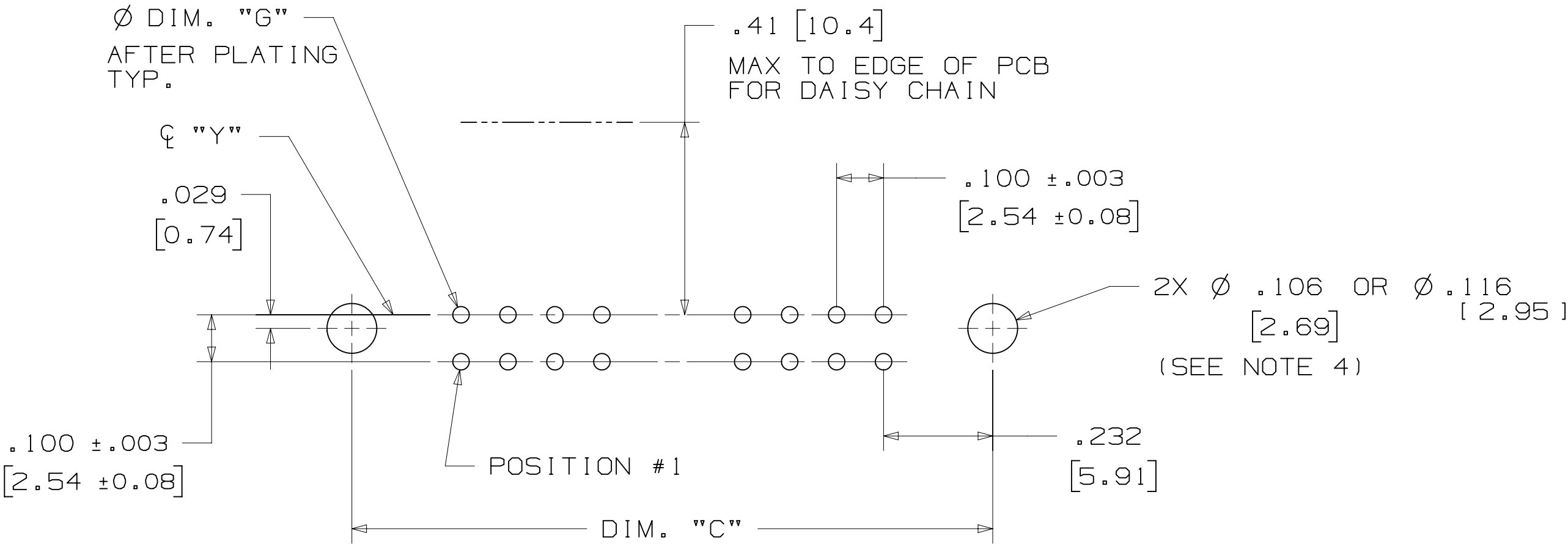
H	60056	MAR 06,2015			JNC	RS
		REVISED ORDERING				
		NUMBER				
G	56068	AUG 05,2014			JNC	RS
		REVISED AND REDRAWN				
REV	ECO	ISSUE DATE AND DESCRIPTION			DRFT	CHKD
DRFT CASTIGLIONE		DATE	AUG 05,2014		MFG	DATE
CHKD		DATE			APPRV. R. SCHERER	DATE SEP 05,2014
 3M Center St. Paul, MN 55144		© 3M COPYRIGHT 2015 This document and the information it contains are 3M property and may not be reproduced or further distributed without the 3M permission, or used or disclosed other than for 3M authorized purposes. All rights reserved.				
TITLE						
HEADER , 3-WALL , .100 X .100 LATCH/EJECTOR , STRAIGHT & RA						
CAGE NUMBER	SIZE	DRAWING NO.				REV.
D		78-5100-0771-5				H
MODEL		3000 SERIES		DET. LISTS	YES <input type="checkbox"/> NO <input checked="" type="checkbox"/>	SHT 2 OF 4

DESIGN REFERENCE		NEXT ASSEMBLY	
ACROSS CODES			
DIVISION		DIVISION CODE	
Interconnect Solutions		EMSD	
DO NOT SCALE DRAWING	SCALE 4 1	TOLERANCES EXCEPT AS NOTED	
 THIRD ANGLE PROJECTION		INCHES	
		.00 ± .01	
		.000 ± .005	
		.0000 ±	
		MILLIMETER	
INTERPRET PER ASME Y14.5 - 2009		0 ±	
MAX. SURFACE ROUGHNESS  <input checked="" type="checkbox"/> DIM. SURFACES <input type="checkbox"/> MARKED ONLY		.00 ± .13	
		.000 ±	
		.0000 ±	
		ANGLES ±	

3M™ THREE-WALL HEADER, 3000 SERIES
.100" X .100" LATCH/EJECTOR, STRAIGHT AND RIGHT ANGLE



RECOMMENDED MOUNTING HOLE PATTERN
(STRAIGHT VERSION)



RECOMMENDED MOUNTING HOLE PATTERN
(RIGHT ANGLE VERSION)

PART CUSTOMIZATION

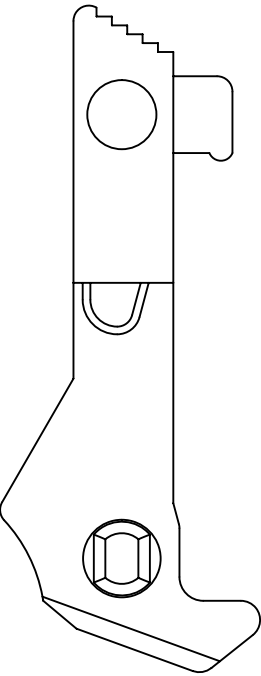
THIS SPEC SHEET DETAILS OUR STANDARD OFFERING.

3M HAS SEVERAL CAPABILITIES THAT CAN PROVIDE A PART TAILORED TO YOUR SPECIFIC NEEDS. ASK YOUR 3M SALES REPRESENTATIVE OR CUSTOMER SERVICE FOR MORE DETAILS.

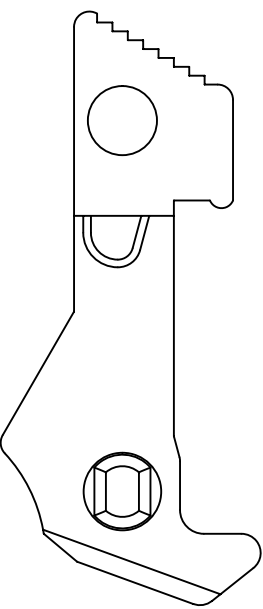
BOTH SNAP-IN AND ROLL PIN LATCHES MAY BE ORDERED SEPARATELY. SNAP-IN AND ROLL PIN STYLE LATCHES ARE DIMENSIONALLY AND FUNCTIONALLY EQUIVALENT. IF ORDERING SNAP-IN OR ROLL PIN STYLE LATCHES SEPARATELY, PLEASE USE THE BELOW CHART.

MATERIAL	SHORT LATCH	LONG LATCH	LATCH STYLE	COLOR
HIGH TEMP. (PCT)	N3505-2B	N3505-3B	ROLL PIN	BLACK
HIGH TEMP (PPA)	N3505-30B	N3505-31B	SNAP-IN	BLACK

- * SELECTIVE PIN REMOVAL (ATA OR OTHER COMPATABILITY)
- * WIRE WRAP TAILS STYLE

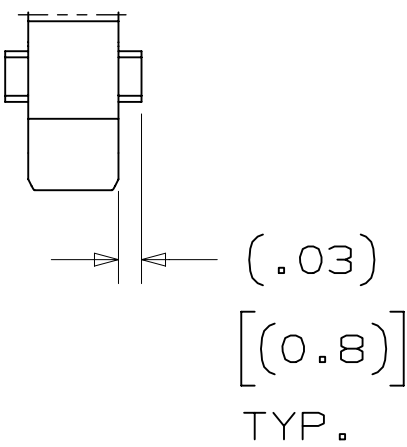


LONG



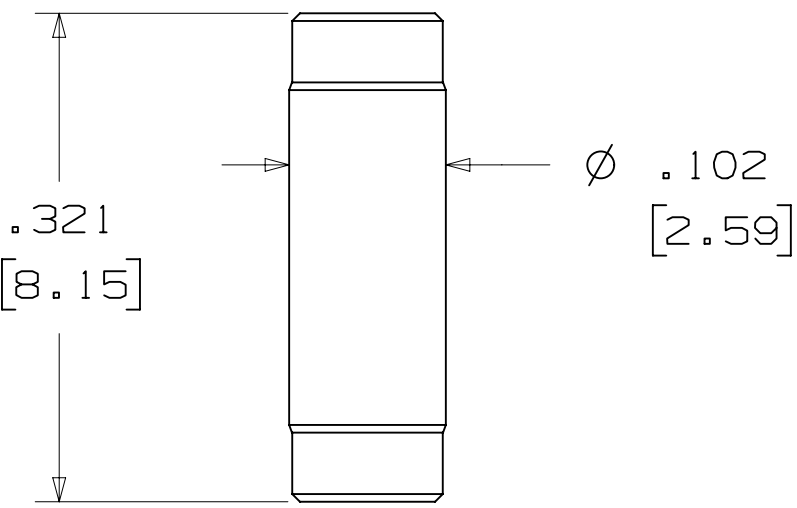
SHORT

SNAP-IN LATCHES



NOTE:
SNAP-IN LATCHES CAN ONLY BE ORDERED SEPARATELY AND ARE THE CUSTOMERS RESPONSIBILITY TO INSTALL.

POLARIZING POST



3M PART NO.	MATERIAL	COLOR
3201-4	LCP	BLACK

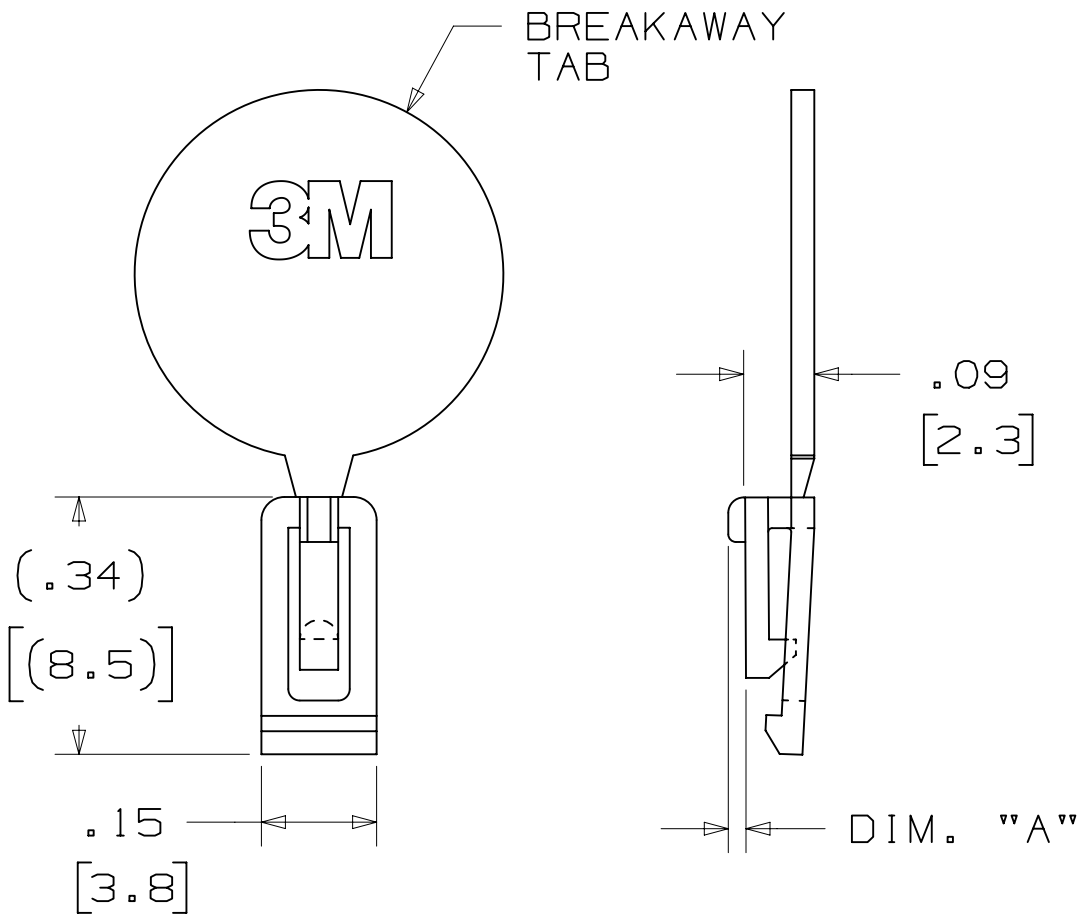
NOTE:
INSERT POST INTO ONE MOUNTING HARDWARE HOLE ON BOTTOM OF HEADER. SET POST TO PROTRUDE .115 [2.92]

(K2) OPTION

2500 & 3000 SERIES SHROUDED HEADER					
TOTAL NO. OF PINS	NO. OF TAILS KINKED	POSITIONS KINKED			
10	4	3	4	7	8
14	4	3	4	11	12
16	4	3	4	13	14
20	4	3	4	17	18
26	4	3	4	23	24
34	4	7	8	27	28
40	4	7	8	33	34
50	4	7	8	43	44
60	4	11	12	49	50
64	4	11	12	53	54

KINKED TAIL DETAIL:
- KINK IS LOCATED .05" BELOW BOTTOM SURFACE OF PLASTIC.
- EXTERNAL RADIUS OF KINK TOWARD PART CENTERLINE.

POLARIZING KEY



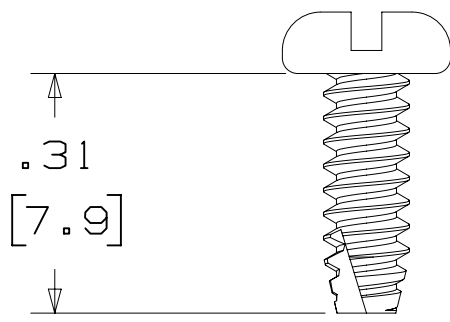
3M PART NO.	MATERIAL	COLOR	DIM. 'A'
N3518	LCP	BLACK	.02

NOTE:
#2216 B/A SCOTCHWELD CAN BE USED TO ADHERE KEYS.

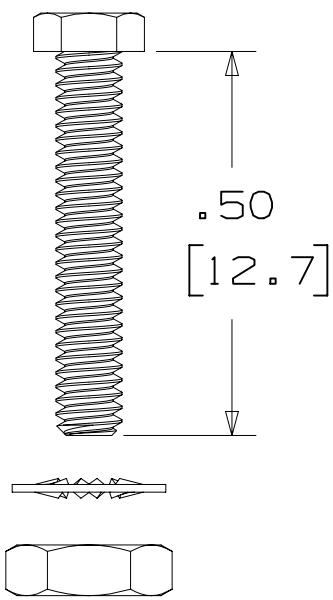
DESIGN REFERENCE		NEXT ASSEMBLY		H	60056	MAR 06,2015 REVISE ORDERING NUMBER		JNC	RS
REV		ECO		G	56068	AUG 05,2014 REVISED AND REDRAWN		JNC	RS
DIVISION		DIVISION CODE		DATE		DATE		DATE	
Interconnect Solutions		EMSD		AUG 05,2014		MFG		SEP 05,2014	
DO NOT SCALE DRAWING		SCALE 4/1		TOLERANCES EXCEPT AS NOTED		3M		This document and the information it contains are 3M property and may not be reproduced or further distributed without 3M permission, or used or disclosed other than for 3M authorized purposes. All rights reserved.	
THIRD ANGLE PROJECTION		INTERPRET PER ASME Y14.5 - 2009		INCHES .00 ±.01 .000 ±.0005 .0000 ±		MILLIMETERS 0 ±.3 .00 ±.13 .000 ±		TITLE HEADER, 3-WALL, .100 X .100 LATCH/EJECTOR, STRAIGHT & RA	
MAX SURFACE ROUGHNESS		SURFACES		CAGE NUMBER		SIZE		DRAWING NO.	
MARKED ONLY		ANGLES		D78-5100-0771-5		H		REV.	
MODEL		3000 SERIES		DET		YES		SHT 3 OF 4	

3M™ THREE-WALL HEADER, 3000 SERIES
.100" X .100" LATCH/EJECTOR, STRAIGHT AND RIGHT ANGLE

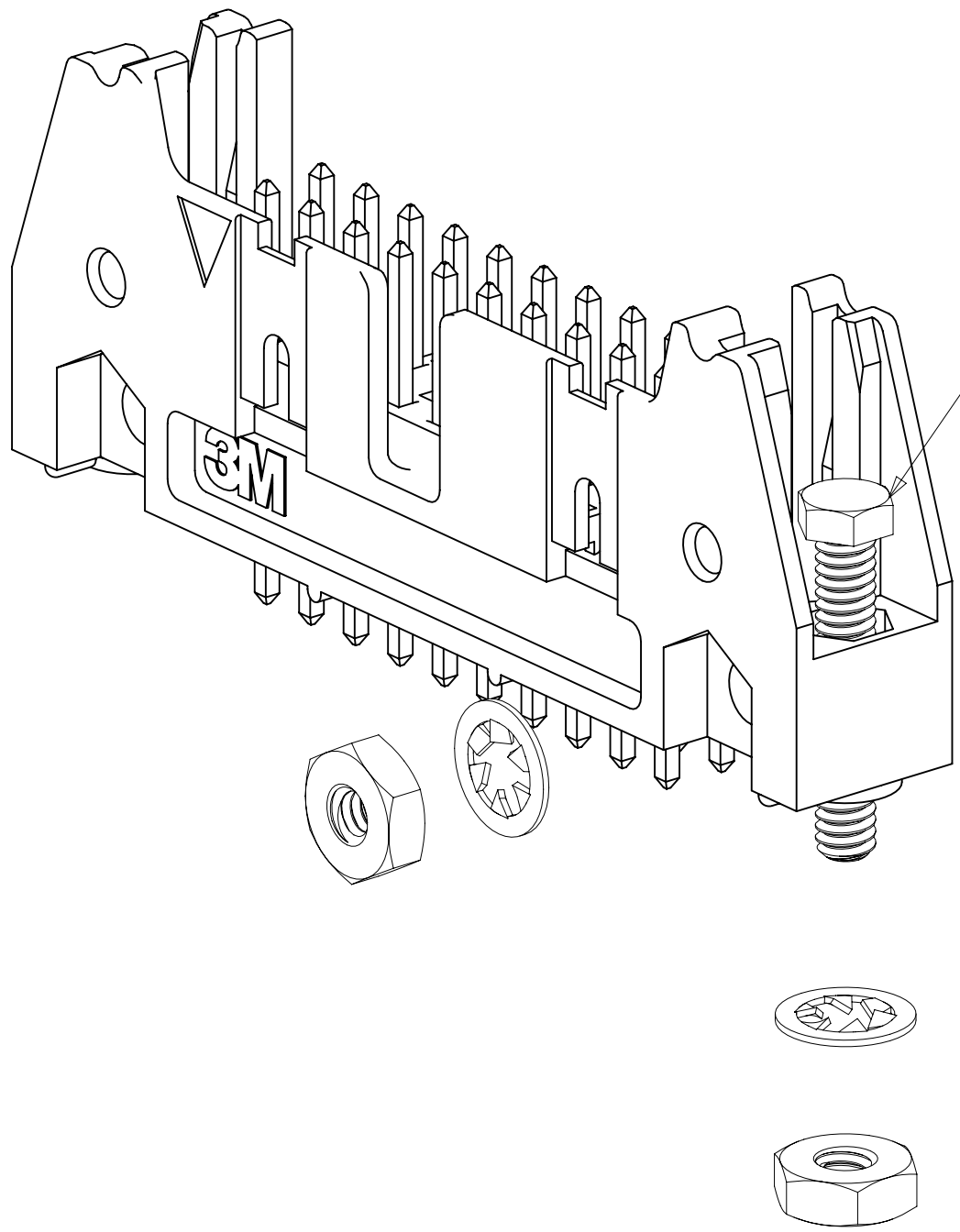
MOUNTING HARDWARE



3341-5
(INSTALL FROM BOTTOM OF BOARD)
PANHEAD THREAD CUTTING SCREW:
#4-24 X 5/16"
TYPE: USA STD BT, FEDERAL BG
MATERIAL: STAINLESS STEEL

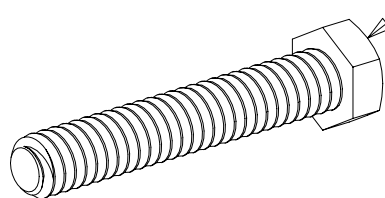


3341-6
HEX HEAD BOLT, NUT AND WASHER:
BOLT - #2-56 X 1/2"
MATERIAL: STAINLESS STEEL

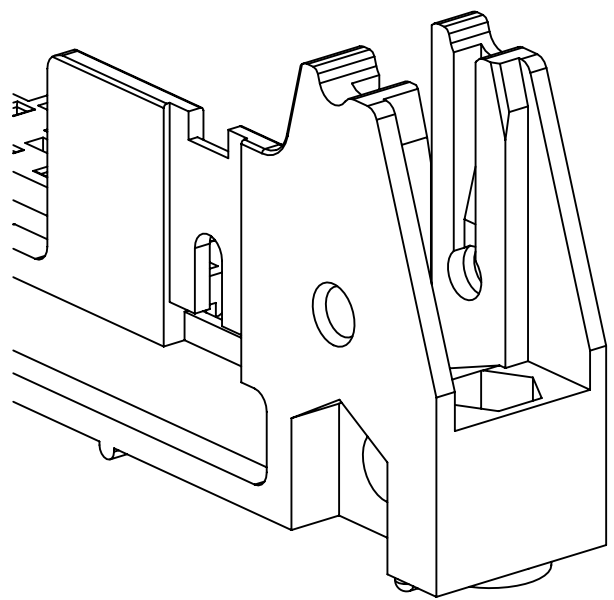


STRAIGHT VERSION INSTALL
(MUST BE INSERTED PRIOR TO
LATCH INSTALL)

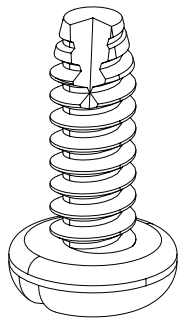
RIGHT ANGLE VERSION INSTALL



3341-6
#2-56 NUT AND BOLT
TORQUE FOR EACH BOLT: 1.25 - 3.125 INCH LBS.



#4-24 TYPE BT SELF THREADING SCREW
WHEN USING LATCHES, MAXIMUM LENGTH
OF SCREW IS .250 INCHES PLUS
THICKNESS OF THE BOARD.
TORQUE FOR EACH SCREW IS 3-5 INCH LBS.



3341-5

DESIGN REFERENCE		NEXT ASSEMBLY		REV	ECO	ISSUE DATE AND DESCRIPTION		DRFT	CHKD
XREF		DIP		CASTIGLIONE	DATE	AUG 05, 2014	MFG	DATE	
DIVISION		DIVISION CODE		CHKD	DATE	R. SCHERER	DATE	SEP 05, 2014	
Interconnect Solutions		EMSD		3M		© 3M COPYRIGHT 2015 St. Paul, MN 55144 This document and the information it contains are 3M property and may not be reproduced or further distributed without 3M permission, or used or disclosed other than for 3M authorized purposes. All rights reserved.			
DO NOT SCALE DRAWING		SCALE 4 1		TOLERANCES EXCEPT AS NOTED		TITLE HEADER, 3-WALL, .100 X .100 LATCH/EJECTOR, STRAIGHT & RA			
THIRD ANGLE PROJECTION		INCHES 0 ± .00 ±.01 .000 ±.005 .0000 ±		MILLIMETERS 0 ± .0 ±.3 .00 ±.13 .000 ±		CAGE NUMBER D78-5100-0771-5			
INTERPRET PER ASME Y14.5 - 2009		MAX SURFACE ROUGHNESS 12.5 SURFACES 6.3 MARKED ONLY		MODEL 3000 SERIES		REV. H			
						DET LISTS YES NO SHT 4 OF 4			

Mouser Electronics

Authorized Distributor

Click to View Pricing, Inventory, Delivery & Lifecycle Information:

3M:

[3431-4405](#) [3793-1503](#) [3433-1402](#) [3433-3005](#)