

Interface module - VIP-2/SC/D15SUB/M - 2315120

Please be informed that the data shown in this PDF Document is generated from our Online Catalog. Please find the complete data in the user's documentation. Our General Terms of Use for Downloads are valid (<http://phoenixcontact.com/download>)



VARIOFACE module, with screw connection and male D-Subminiature pin strip, for mounting on NS 35 rails, 15-pos.

Product Features

- 9 to 50-pos.
- Metal foot
- According to IEC 60603-13
- 1:1 connection
- Screw connection



Key Commercial Data

Packing unit	1 pc
Weight per Piece (excluding packing)	112.6 g
Custom tariff number	85369010
Country of origin	United States

Technical data

Dimensions

Width	45 mm
Height	65.5 mm
Depth	45.1 mm

Ambient conditions

Ambient temperature (operation)	-20 °C ... 50 °C
Ambient temperature (storage/transport)	-20 °C ... 70 °C

General

Interface module - VIP-2/SC/D15SUB/M - 2315120

Technical data

General

Max. perm. operating voltage	125 V AC/DC
Max. perm. current (per branch)	2 A
Number of positions	15
Mounting position	any
Standards/regulations	IEC 60664
	DIN EN 50178
	IEC 62103
Rated surge voltage	1.2 kV
Degree of pollution	2
Overvoltage category	II

Connection data for connection 1

Connection name	Field level
Connection in acc. with standard	IEC / EN
Connection method	Screw connection
Stripping length	8 mm
Screw thread	M 3
Conductor cross section solid	0.2 mm ² ... 4 mm ²
Conductor cross section flexible	0.2 mm ² ... 2.5 mm ²
Conductor cross section AWG	24 ... 12

Connection data for connection 2

Connection name	Controller level
Connection method	D-SUB pin strip
Number of connections	1
Number of positions	15

Standards and Regulations

Connection in acc. with standard	CSA
Standards/regulations	IEC 60664
	DIN EN 50178
	IEC 62103
Degree of pollution	2
Overvoltage category	II

Classifications

eCl@ss

eCl@ss 4.0	27250313
------------	----------

Interface module - VIP-2/SC/D15SUB/M - 2315120

Classifications

eCl@ss

eCl@ss 4.1	27250313
eCl@ss 5.0	27250313
eCl@ss 5.1	27250313
eCl@ss 6.0	27242608
eCl@ss 7.0	27141152
eCl@ss 8.0	27141152
eCl@ss 9.0	27141152

ETIM

ETIM 2.0	EC001434
ETIM 3.0	EC001604
ETIM 4.0	EC001604
ETIM 5.0	EC002780

UNSPSC

UNSPSC 6.01	30211824
UNSPSC 7.0901	39121421
UNSPSC 11	39121421
UNSPSC 12.01	39121421
UNSPSC 13.2	39121421

Approvals

Approvals

Approvals

CSA / UL Recognized / cUL Recognized / EAC / EAC / EAC / cULus Recognized

Ex Approvals

Approvals submitted

Approval details

Interface module - VIP-2/SC/D15SUB/M - 2315120

Approvals

CSA	
mm ² /AWG/kcmil	28-14
Nominal current IN	2 A
Nominal voltage UN	105 V

UL Recognized	
mm ² /AWG/kcmil	30-12
Nominal current IN	2 A
Nominal voltage UN	125 V

cUL Recognized	
mm ² /AWG/kcmil	30-12
Nominal current IN	2 A
Nominal voltage UN	125 V

EAC

EAC

EAC

cULus Recognized

Accessories

Accessories

System cable

Interface module - VIP-2/SC/D15SUB/M - 2315120

Accessories

Cable - CABLE-D15SUB/B/S/ 50/KONFEK/S - 2302052



Round shielded cable set, with 15-pos. D-SUB female and male connectors, cable length: 0.5 m

Cable - CABLE-D15SUB/B/S/100/KONFEK/S - 2302065



Round shielded cable set, with 15-pos. D-SUB female and male connectors, cable length: 1 m

Cable - CABLE-D15SUB/B/S/150/KONFEK/S - 2302078



Round shielded cable set, with 15-pos. D-SUB female and male connectors, cable length: 1.5 m

Cable - CABLE-D15SUB/B/S/200/KONFEK/S - 2302081



Round shielded cable set, with 15-pos. D-SUB female and male connectors, cable length: 2 m

Cable - CABLE-D15SUB/B/S/300/KONFEK/S - 2302094



Round shielded cable set, with 15-pos. D-SUB female and male connectors, cable length: 3 m

Interface module - VIP-2/SC/D15SUB/M - 2315120

Accessories

Cable - CABLE-D15SUB/B/S/400/KONFEK/S - 2302104



Round shielded cable set, with 15-pos. D-SUB female and male connectors, cable length: 4 m

Cable - CABLE-D15SUB/B/S/600/KONFEK/S - 2302117



Round shielded cable set, with 15-pos. D-SUB female and male connectors, cable length: 6 m

Cable - CABLE D-SUB-S/.../.../... - 2302340



Shielded round cable, assembled with one D-SUB male and one female connector, variable cable length

Cable - CABLE-D15SUB/B/B/100/KONFEK/S - 2305444



Assembled, shielded circular cable, with D-SUB socket strip, 15-pos. from both sides, cable length: 1 m

Cable - CABLE-D15SUB/B/B/200/KONFEK/S - 2305457



Assembled, shielded circular cable, with D-SUB socket strip, 15-pos. from both sides, cable length: 2m

Interface module - VIP-2/SC/D15SUB/M - 2315120

Accessories

Cable - CABLE-D15SUB/B/B/300/KONFEK/S - 2305460



Assembled, shielded circular cable, with D-SUB socket strip, 15-pos. from both sides, cable length: 3 m

Cable - CABLE D-SUB-B-B-S/.../.../... - 2302421



Shielded round cable, assembled with two D-SUB female connectors, variable cable length

Terminal marking

Marker for terminal blocks - UC-TM 4 - 0818111



Marker for terminal blocks, Sheet, white, unlabeled, can be labeled with: BLUEMARK CLED, BLUEMARK LED, Plotter, Mounting type: Snap into tall marker groove, for terminal block width: 4.2 mm, Lettering field: 3.6 x 10.5 mm

Marker for terminal blocks - UC-TM 6 - 0818085



Marker for terminal blocks, Sheet, white, unlabeled, can be labeled with: BLUEMARK CLED, BLUEMARK LED, Plotter, Mounting type: Snap into tall marker groove, for terminal block width: 6.2 mm, Lettering field: 5.6 x 10.5 mm

Zack marker strip - ZB 5,08:UNBEDRUCKT - 0809793



Zack marker strip, Strip, white, unlabeled, can be labeled with: Plotter, Mounting type: Snap into tall marker groove, for terminal block width: 5.08 mm, Lettering field: 4.98 x 10.5 mm

Interface module - VIP-2/SC/D15SUB/M - 2315120

Accessories

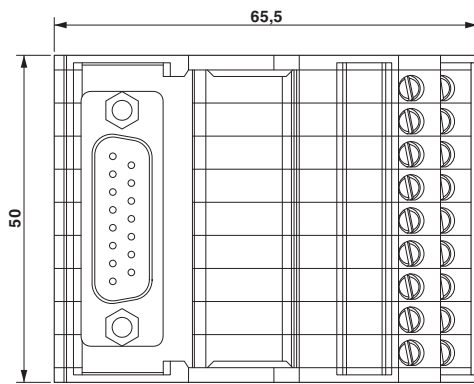
Zack marker strip - ZB 22:UNBEDRUCKT - 0811862



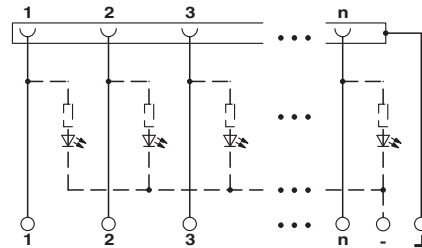
Zack marker strip, Strip, white, unlabeled, can be labeled with: Plotter, Mounting type: Snap into tall marker groove, for terminal block width: 22 mm, Lettering field: 10.5 x 21.8 mm

Drawings

Dimensional drawing



Circuit diagram



Mouser Electronics

Authorized Distributor

Click to View Pricing, Inventory, Delivery & Lifecycle Information:

[Phoenix Contact:](#)

[2315120](#)