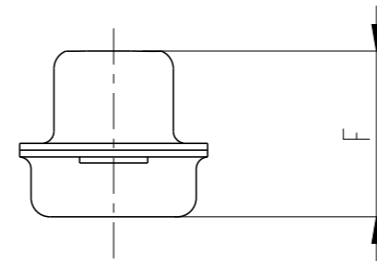
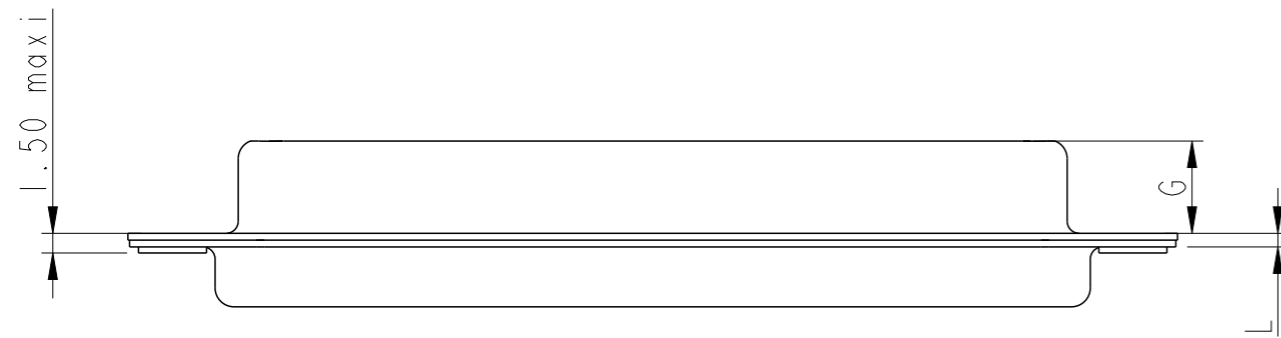
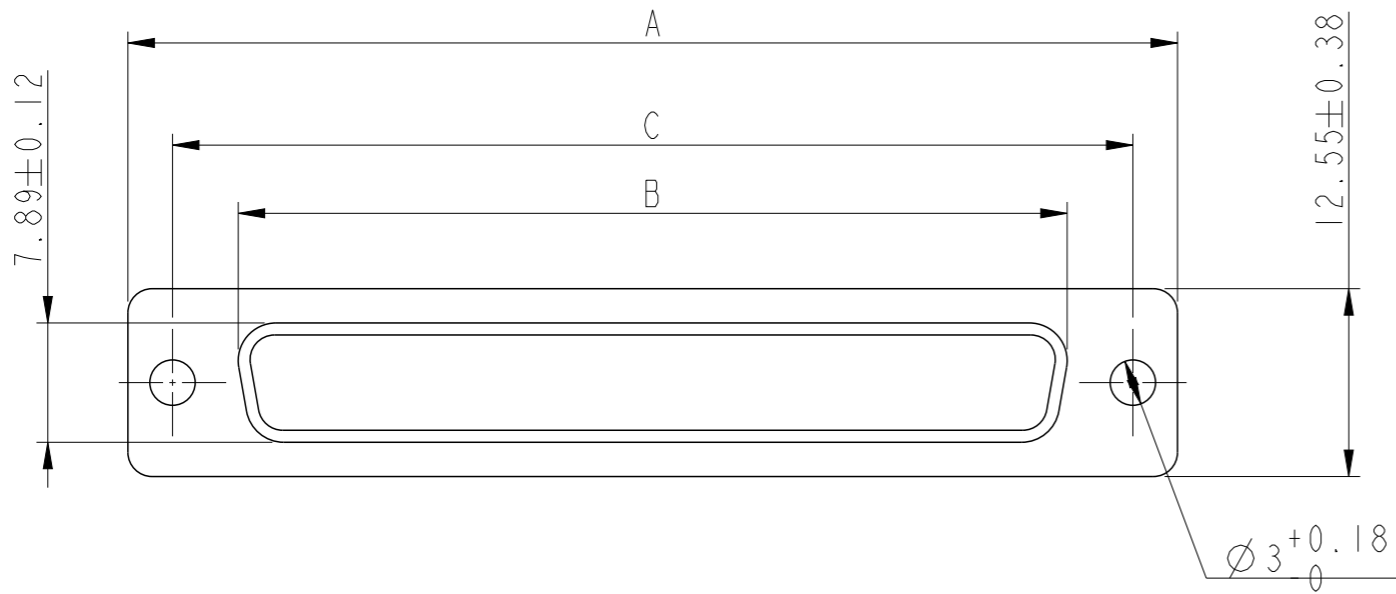




Copyright FCI.



Shell size	A <sup>+0.76</sup> <sub>0</sub>	B <sup>+0.25</sup> <sub>0</sub>	C $\pm$ 0.12	F $\pm$ 0.12	G <sup>+0.25</sup> <sub>0</sub>	L <sup>+0.22</sup> <sub>0</sub>	Part Number
E	30.43	16.21	24.99	10.96	6.05	0.80	86553148TLF
A	38.76	24.54	33.32	10.96	6.05	0.80	86553149TLF
B	52.65	38.25	47.04	10.96	6.05	0.80	86553150TLF
C	68.94	54.71	63.50	10.96	6.05	0.80	86553151TLF

NOTES

- RoHS INFO : The product meets the european directives and others countries regulations as described on the GS-47-0004
- The product isn't intended to be exposed to a manufacturing solder process
- Plating : Sn pure bright over copper
- Packaging spec : see GS-14-920

spec ref	-	dr	A Parrenin	2013/04/04	projection		size	A3	scale	2:1
tolerance std	ISO 406 ISO 1101	eng	A Parrenin	2013/05/16	mm		ecn no	ELX-B-14776-1		
surface	linear	ISO 1302	TOLERANCES UNLESS OTHERWISE SPECIFIED	0.X	±0.3	product family	D-Sub	rel level	Released	rev
				0.XX	±0.10					
				0.XXX	±0.05					
	angular			0°	±2°					
				SOCKET METAL CAPS		dwg no		C01-8655-1657		D
		www.fci.com		cat. no.		-		Product - Customer Drw		sheet 1 of 1

# Mouser Electronics

Authorized Distributor

Click to View Pricing, Inventory, Delivery & Lifecycle Information:

[FCI / Amphenol:](#)

[86553149TLF](#) [86553150TLF](#)