

MICRO SWITCH

FREEPORT ILLINOIS, U.S.A
A DIVISION OF HONEYWELL
FED. MFG. CODE 91929

SWITCH — BASIC

CATALOG LISTING

10BS226

10BS226

M

DRAWING
NUMBER

8

ISSUE

REPLACES

RELEASE NO. PR-13879

CHECK

REVISIONS

A	C080053
	JALA 5 APR 95
B	C080986
	JALA 26 JUN 95

CHECK

1 MAY 85

KAG

85

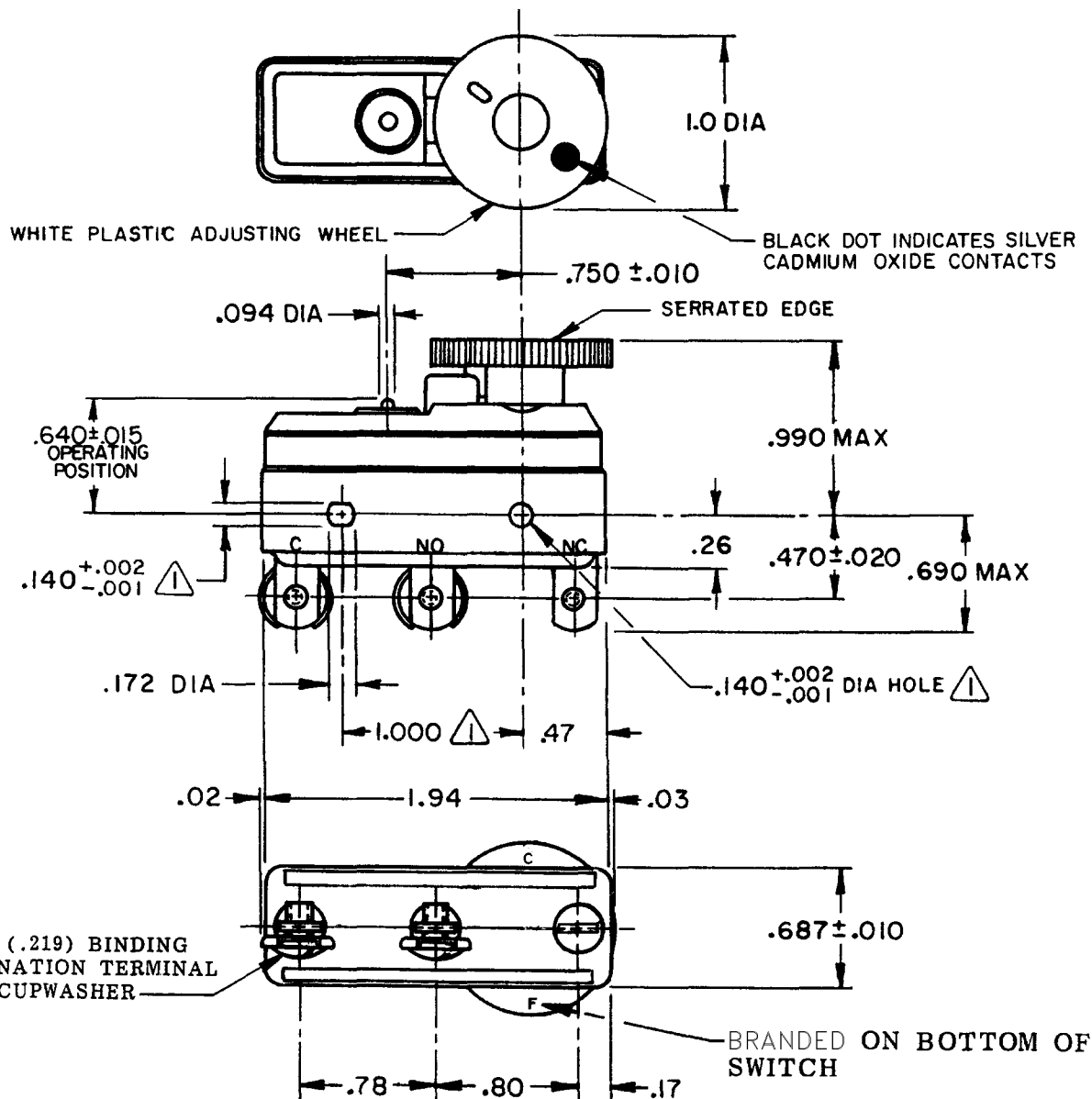
APR

P 29

J A

FORMTEK

DRAWN

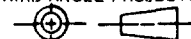


NOTES

- 1 ⚠ MOUNTING HOLES WILL ACCEPT PINS OR SCREWS OF .139 MAX ON 1.000 ±.002 CENTERS
- 2 - DIAL WHEEL IS SHOWN AT THE MAX SETTING OF BREAK DISTANCE
- 3 - DIAL WHEEL ROTATION 300°
- 4 - 8-32 UNC X .218 REF TERMINAL SCREW AND WASHER FURNISHED UNASSEMBLED (1)

THIS DRAWING COVERS A PROPRIETARY ITEM AND IS THE PROPERTY OF MICRO SWITCH, A DIVISION OF HONEYWELL. THIS DRAWING IS NOT TO BE COPIED OR USED WITHOUT THE APPROVAL OF MICRO SWITCH.

THIRD ANGLE PROJECTION



CHARACTERISTICS

AT MIN SETTING
OPERATING FORCE — — — — — 11-20 OZ
RELEASE FORCE — — — — — 10 OZ MIN
DIFFERENTIAL TRAVEL — — — .0015-.0025

AT MAX SETTING
DIFFERENTIAL TRAVEL — — — — — .007 MIN
OVERTRAVEL — — — — — .010 MIN

ELECTRICAL DATA

CONTACT ARRANGEMENT
S P D T

L17
20A 125, 250 OR 480 VAC
3/4 HP 125 VAC, 1 1/2 HP 250 VAC



SCALE FULL

DO NOT SCALE PRINT

TOLERANCES
APPLY TO DESIGN UNITS. CONVERSIONS ARE ONLY FOR REFERENCE. UNLESS NOTED, TOLERANCES ARE ±

	DIM. mm	TOL. mm/in	DIM. in	TOL. mm/in
NO PLACES	X	1/.04	X	X
ONE PLACE	X,X	0.4/.016	X,X	0.07/.003
TWO PLACES	X,X,X	0.16/.006	X,X,X	0.38/.016
THREE PLACES	X,X,X,X		X,X,X,X	0.13/.005
ANGLES				

DESIGN UNITS ☐ SI METRIC

☒ US CUSTOMARY

WEIGHT

Mouser Electronics

Authorized Distributor

Click to View Pricing, Inventory, Delivery & Lifecycle Information:

[Honeywell:](#)

[10BS226](#)