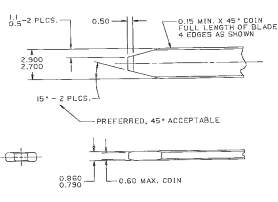


D  
 DIMENSIONS UNLESS OTHERWISE SPECIFIED ARE IN MILLIMETERS  
 UNLESS INDICATED OTHERWISE  
 DO NOT SCALE

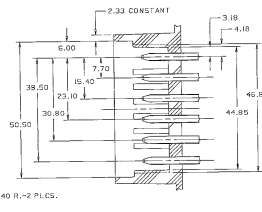
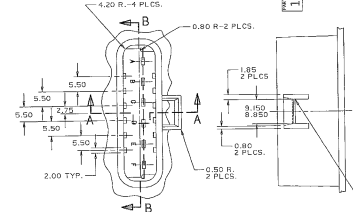
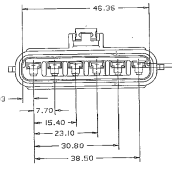
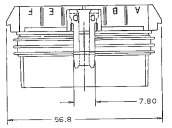
1205 9573

1205 9573

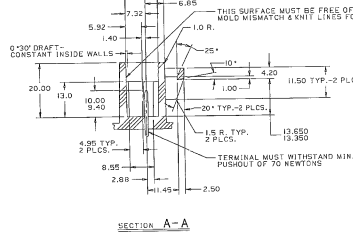


**MATING TERMINAL INFORMATION**  
 SCALE B:1

RECOMMENDED MATERIAL: P-1045 (CA 210) BRASS-EXTRA SPRING TEMPER - TIN PLATED  
 PLATING THICKNESS: 0.003 - 0.005 MM.  
 TENSILE STRENGTH: 430 - 480 MPA.  
 USE OF MATERIAL WITH CONDUCTIVITY > 200% IACS AT 68°F SHOULD BE APPROVED BY PACKARD ELECTRIC.



**SECTION B-B**



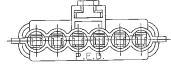
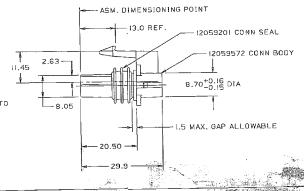
**SECTION A-A**

**MATING CONNECTOR INFORMATION**

- NOTES - 1. 1° DRAFT ON ALL SURFACES UNLESS OTHERWISE SPECIFIED.  
 2. DIMENSIONS ARE TO FACE OF VIEW SHOWN UNLESS OTHERWISE SPECIFIED.  
 3. ALL RADI 0.40 UNLESS OTHERWISE SPECIFIED.

RECOMMENDED MATERIAL - GLASS FILLED POLYESTER OR TYPE 6 NYLON.

- NOTES - 1. CAVITIES TO ACCEPT 12077412 TERMINAL OR EQUIVALENT.  
 2. THIS ASSEMBLY TO ACCEPT 12059195 SECONDARY TERMINAL LOCK OR EQUIVALENT.  
 3. THIS ASSEMBLY TO ACCEPT C.P.A. LOCK 12052824.  
 4. THIS ASSEMBLY MATES TO DELCO PRODUCTS PART NO. 2052234 OR EQUIVALENT.  
 5. THIS ASSEMBLY TO ACCEPT CABLE SEAL 1205323 OR EQUIVALENT.  
 6. WHEN PARTS ARE SHIPPED, THEY MUST BE PACKED IN PLASTIC BAGS OR SHIPPED ONLY ALONGS MUST BE LINED WITH PLASTIC LINERS. BAGS OR LINERS MUST BE SEALED TO AVOID ENTRY OF FOREIGN MATTER.  
 7. SEALING CODE 2.



REV	DATE	DESCRIPTION	BY	CHK
0001		CAVITY LETTERS & NOTES ADDED		
0002		INCL. LEAD		
0003		TO 28 DIA. WAS 8 TO DIA. ON		
0004		ADHESIVE ADDED		
0005		ADHESIVE ADDED		
0006		ADHESIVE ADDED		
0007		ADHESIVE ADDED		
0008		ADHESIVE ADDED		
0009		ADHESIVE ADDED		
0010		ADHESIVE ADDED		
0011		ADHESIVE ADDED		
0012		ADHESIVE ADDED		
0013		ADHESIVE ADDED		
0014		ADHESIVE ADDED		
0015		ADHESIVE ADDED		
0016		ADHESIVE ADDED		
0017		ADHESIVE ADDED		
0018		ADHESIVE ADDED		
0019		ADHESIVE ADDED		
0020		ADHESIVE ADDED		
0021		ADHESIVE ADDED		
0022		ADHESIVE ADDED		
0023		ADHESIVE ADDED		
0024		ADHESIVE ADDED		
0025		ADHESIVE ADDED		
0026		ADHESIVE ADDED		
0027		ADHESIVE ADDED		
0028		ADHESIVE ADDED		
0029		ADHESIVE ADDED		
0030		ADHESIVE ADDED		
0031		ADHESIVE ADDED		
0032		ADHESIVE ADDED		
0033		ADHESIVE ADDED		
0034		ADHESIVE ADDED		
0035		ADHESIVE ADDED		
0036		ADHESIVE ADDED		
0037		ADHESIVE ADDED		
0038		ADHESIVE ADDED		
0039		ADHESIVE ADDED		
0040		ADHESIVE ADDED		
0041		ADHESIVE ADDED		
0042		ADHESIVE ADDED		
0043		ADHESIVE ADDED		
0044		ADHESIVE ADDED		
0045		ADHESIVE ADDED		
0046		ADHESIVE ADDED		
0047		ADHESIVE ADDED		
0048		ADHESIVE ADDED		
0049		ADHESIVE ADDED		
0050		ADHESIVE ADDED		
0051		ADHESIVE ADDED		
0052		ADHESIVE ADDED		
0053		ADHESIVE ADDED		
0054		ADHESIVE ADDED		
0055		ADHESIVE ADDED		
0056		ADHESIVE ADDED		
0057		ADHESIVE ADDED		
0058		ADHESIVE ADDED		
0059		ADHESIVE ADDED		
0060		ADHESIVE ADDED		
0061		ADHESIVE ADDED		
0062		ADHESIVE ADDED		
0063		ADHESIVE ADDED		
0064		ADHESIVE ADDED		
0065		ADHESIVE ADDED		
0066		ADHESIVE ADDED		
0067		ADHESIVE ADDED		
0068		ADHESIVE ADDED		
0069		ADHESIVE ADDED		
0070		ADHESIVE ADDED		
0071		ADHESIVE ADDED		
0072		ADHESIVE ADDED		
0073		ADHESIVE ADDED		
0074		ADHESIVE ADDED		
0075		ADHESIVE ADDED		
0076		ADHESIVE ADDED		
0077		ADHESIVE ADDED		
0078		ADHESIVE ADDED		
0079		ADHESIVE ADDED		
0080		ADHESIVE ADDED		
0081		ADHESIVE ADDED		
0082		ADHESIVE ADDED		
0083		ADHESIVE ADDED		
0084		ADHESIVE ADDED		
0085		ADHESIVE ADDED		
0086		ADHESIVE ADDED		
0087		ADHESIVE ADDED		
0088		ADHESIVE ADDED		
0089		ADHESIVE ADDED		
0090		ADHESIVE ADDED		
0091		ADHESIVE ADDED		
0092		ADHESIVE ADDED		
0093		ADHESIVE ADDED		
0094		ADHESIVE ADDED		
0095		ADHESIVE ADDED		
0096		ADHESIVE ADDED		
0097		ADHESIVE ADDED		
0098		ADHESIVE ADDED		
0099		ADHESIVE ADDED		
0100		ADHESIVE ADDED		

CONTOUR

**METRIC**  
 DIMENSIONS ARE IN MILLIMETERS UNLESS OTHERWISE SPECIFIED

FORM NO. 6500 (REVISED 1974)

RC-C-5110

PACKARD ELECTRIC COMPANY  
 1205 9573

SEE DRAWING

NAME: ASM CONN OF M/P 280

PART NO. 1205 9573

REV. D

PACKARD ELECTRIC DIVISION  
 GENERAL ELECTRIC COMPANY

11A  
 4A

CONTOUR

CONTOUR

CONTOUR

CONTOUR

# Mouser Electronics

Authorized Distributor

Click to View Pricing, Inventory, Delivery & Lifecycle Information:

[Aptiv:](#)

[12059573](#) [12059573-B](#)