

# 10ER7 & 10ER7M

## SAFETY ORGANIZATION(S):

THIS FILTER HAS BEEN FORMALLY RECOGNIZED, CERTIFIED OR APPROVED BY THE LISTED AGENCY. THEREFORE, ALL TEST/REQUIREMENTS SPECIFIED IN THE LATEST REVISION OF THE FOLLOWING AGENCY STANDARDS HAVE BEEN MET.

UL RECOGNIZED  
CSA CERTIFIED  
VDE APPROVED  
SEV APPROVED

UL 1283  
CSA 22.2, NO.0,0.4,8  
VDE 565-3  
SEV 1055/TP1977/5.1.1

## OPERATING SPECIFICATIONS:

LINE VOLTAGE/CURRENT: 10 AMP, 120/250 VAC  
5 AMP./40°C, 250 VAC

LINE FREQUENCY: 50-60Hz

MAX. LEAKAGE CURRENT, EACH: .25 mA AT 120V 60Hz  
LINE TO GROUND: .40 mA at 250V 50Hz

OPERATING AMBIENT TEMP. RANGE: -10°C TO +40°C @ RATED CURRENT,  $I_r$

IN AN AMBIENT,  $T_a$ , HIGHER THAN 40°C, THE MAXIMUM OPERATING CURRENT,  $I_o$ , IS AS FOLLOWS:

$$I_o = I_r \sqrt{\frac{85 - T_a}{45}}$$

LTR	DESCRIPTION	DATE	DWN	APVD
F1	REVISED PER ECO-09-026495	17DEC09	KK	AEG

## RELIABILITY SPECIFICATIONS:

STORAGE TEMPERATURE: -40°C TO +85°C  
HUMIDITY: 21 DAYS @ 40°C 95% RH  
CURRENT OVERLOAD TEST: 6 TIMES RATED CURRENT FOR 8 SECONDS

## TEST SPECIFICATIONS:

INDUCTANCE: .99 mH NOMINAL  
CAPACITANCE: MEASURED @ 1 KHz, 0.25VAC MAX., 25°C±1°C  
LINE TO GROUND: .006 µF ±20%  
LINE TO LINE: .301 µF ±20%  
DISCHARGE RESISTOR: 680KΩ

LINE/GROUND AND LINE/LINE: 6000MΩ (MIN) AT 100VDC  
INSULATION RESISTANCE: 20°C AND 50% RH

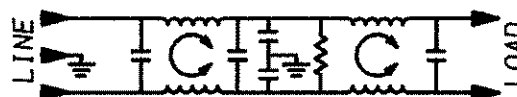
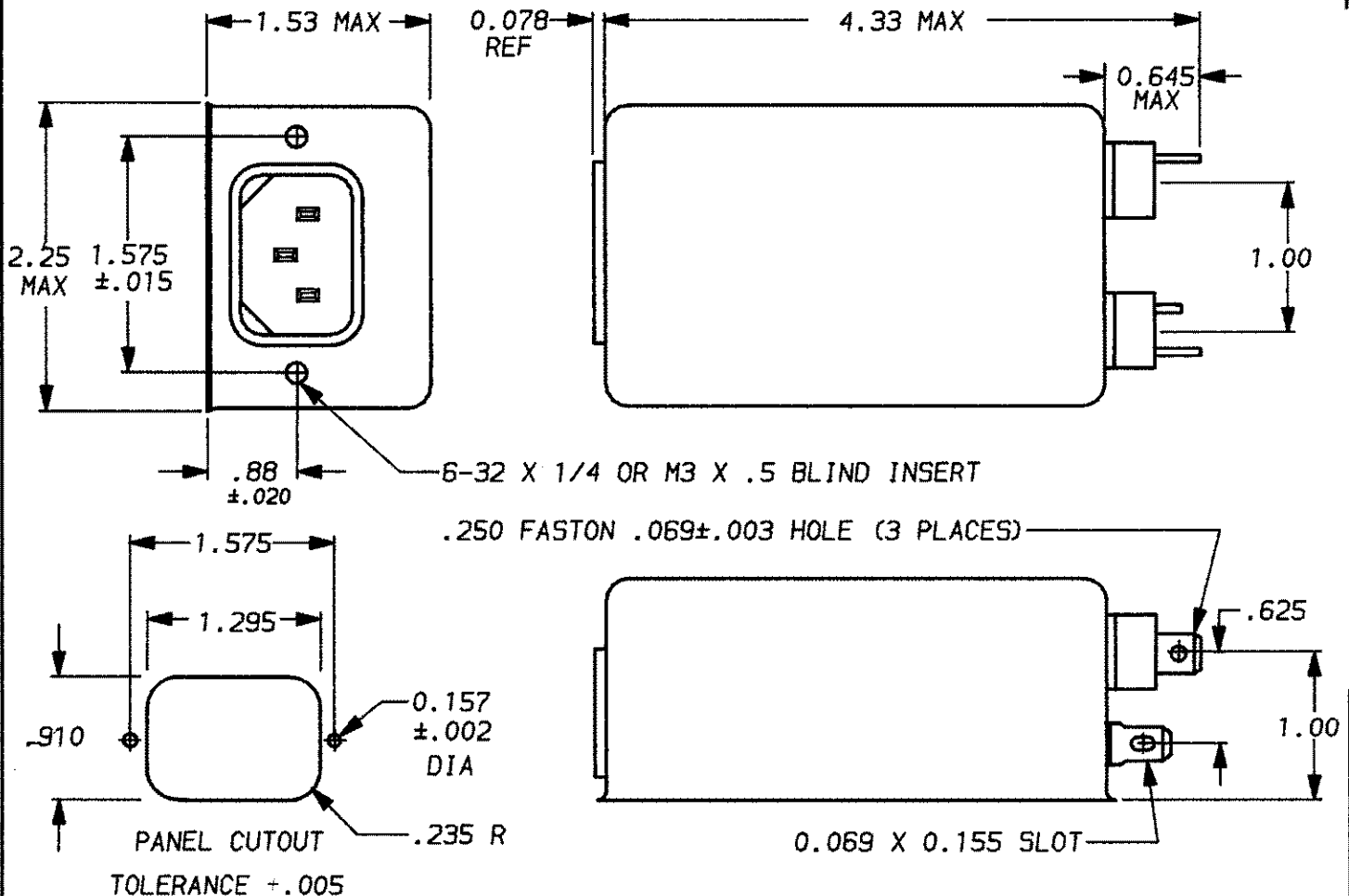
RECOMMENDED RECEIVING INSPECTION HIPOT:

LINE TO GROUND: 2250 VDC FOR 1 MINUTE  
LINE TO LINE: 1450 VDC FOR 1 MINUTE

## FILTER APPROVAL:

THE BEST WAY TO SELECT AND QUALIFY A FILTER IS FOR YOUR ENGINEERING TO TEST THE UNIT IN YOUR EQUIPMENT.

1 OBSOLETE PARTS: OBSOLETE CIS STREAMLINING PER D.RENAUD/D.SINISI



1-6609031-5	OBSOLETE	1
1-6609031-5	OBSOLETE	1
1-6609031-6	OBSOLETE	1
1-6609031-6	OBSOLETE	1

50Ω - 50Ω (MINIMUM) INSERTION LOSS												UNLESS OTHERWISE SPECIFIED, TOLERANCE TO BE ±.025 MATERIAL & FINISH: AS SUPPLIED		corcom LIBERTYVILLE, IL 60048 POWER LINE FILTER	
FREQUENCY MHz	.15	.3	.5	.6	1	2	5	10	20	30	/				
COMMON dB	5	26	42	44	52	58	65	65	65	65	/	This document is proprietary to CORCOM INC. and is not to be reproduced nor used for manufacturing purposes except on CORCOM'S prior written consent.		DATE: 9-23-93 CATALOG NO. 10ER7 & 10ER7M APPROV. T.A.M. CAD NO. 10ER7.05	
DIFF. dB	7	2	7	10	40	65	65	65	65	65	/				

# Mouser Electronics

Authorized Distributor

Click to View Pricing, Inventory, Delivery & Lifecycle Information:

[TE Connectivity:](#)

[10ER7M](#)