

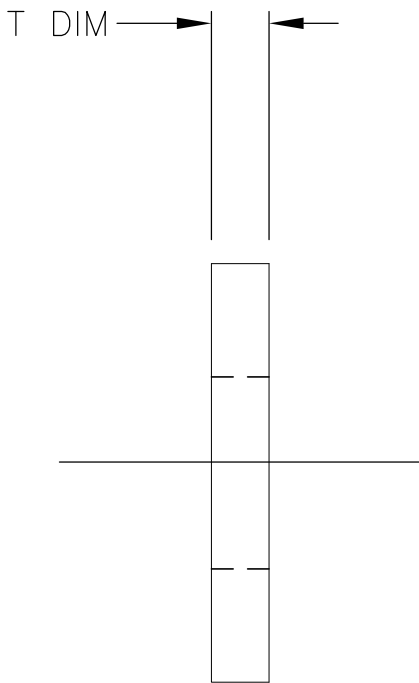
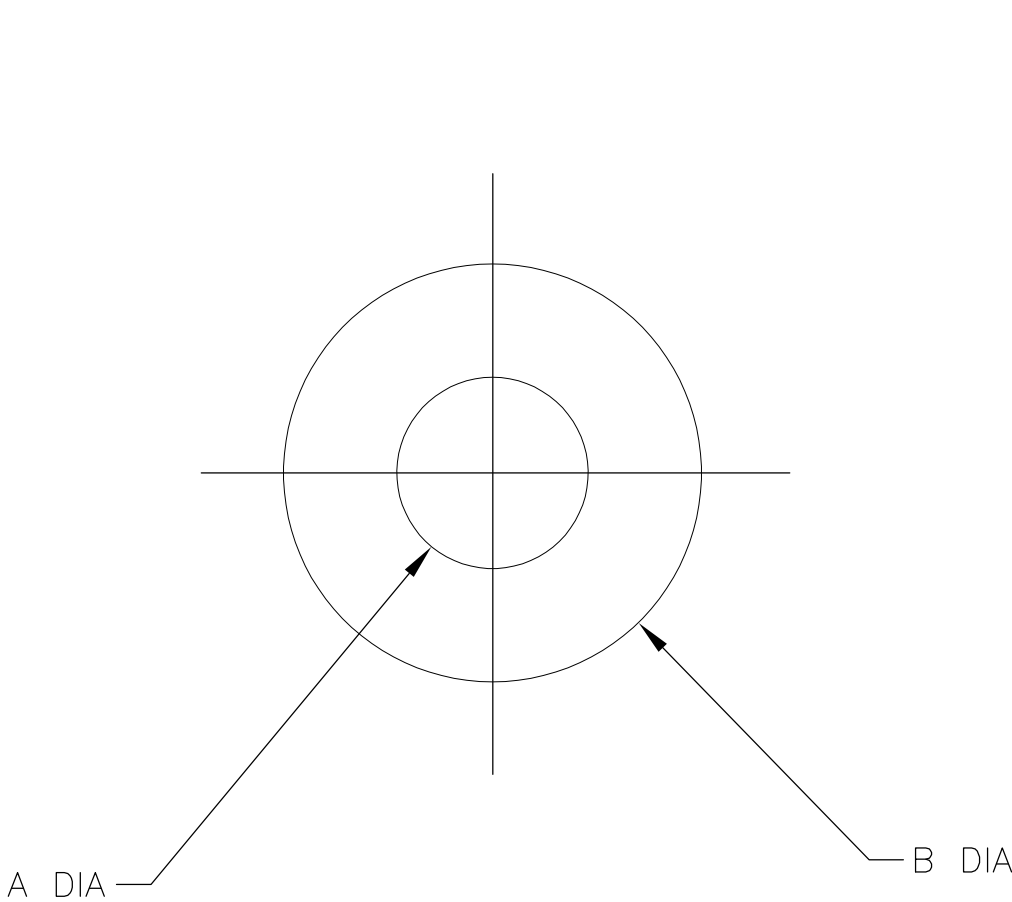
THIS DRAWING IS UNPUBLISHED.

RELEASED FOR PUBLICATION

© COPYRIGHT - By -

ALL RIGHTS RESERVED.

LOC	DIST	REVISIONS					
		P	LTR	DESCRIPTION	DATE	DWN	APVD
—	—		A	RELEASED	7-29-15	CT	RL



TE PART NO.	A DIA	B DIA	T DIM	MATERIAL	FINISH
1589335-1	$\phi.050^{+.002}_{-.001}$	$\phi.109^{+.000}_{-.003}$	$.015^{+.000}_{-.002}$	303 STAINLESS STEEL	PASSIVATE PER SAE-AMS-2700, TYPE 2
1589335-2	$\phi.050$	$\phi.109^{+.000}_{-.010}$.015	G10	NONE
1589335-3	$\phi.050$	$\phi.109^{+.000}_{-.010}$.015	TEFLON	NONE

THIS DRAWING IS A CONTROLLED DOCUMENT.

DWN7-29-15
C.C.THOMAS

CHK7-29-15
R.LEASE

APVD7-29-15
R.LEASE

PRODUCT SPEC

APPLICATION SPEC

WEIGHT—

CUSTOMER DRAWING

DIMENSIONS:
INCHES

TOLERANCES UNLESS OTHERWISE SPECIFIED:

0 PLC ± —
1 PLC ± .01
2 PLC ± .005
3 PLC ± .002
4 PLC ± .0005
ANGLES ± 1°

FINISH—

MATERIAL
SEE TABULATION

—

TE Connectivity

NAME
FLAT WASHER,
1.2mm CLEARANCE

SIZE
A2

CAGE CODE
00779

DRAWING NO
C=1589335

RESTRICTED TO
—

SCALE20:1SHEET1 of 1REV A

1589335

Mouser Electronics

Authorized Distributor

Click to View Pricing, Inventory, Delivery & Lifecycle Information:

[TE Connectivity:](#)

[1589335-3](#)