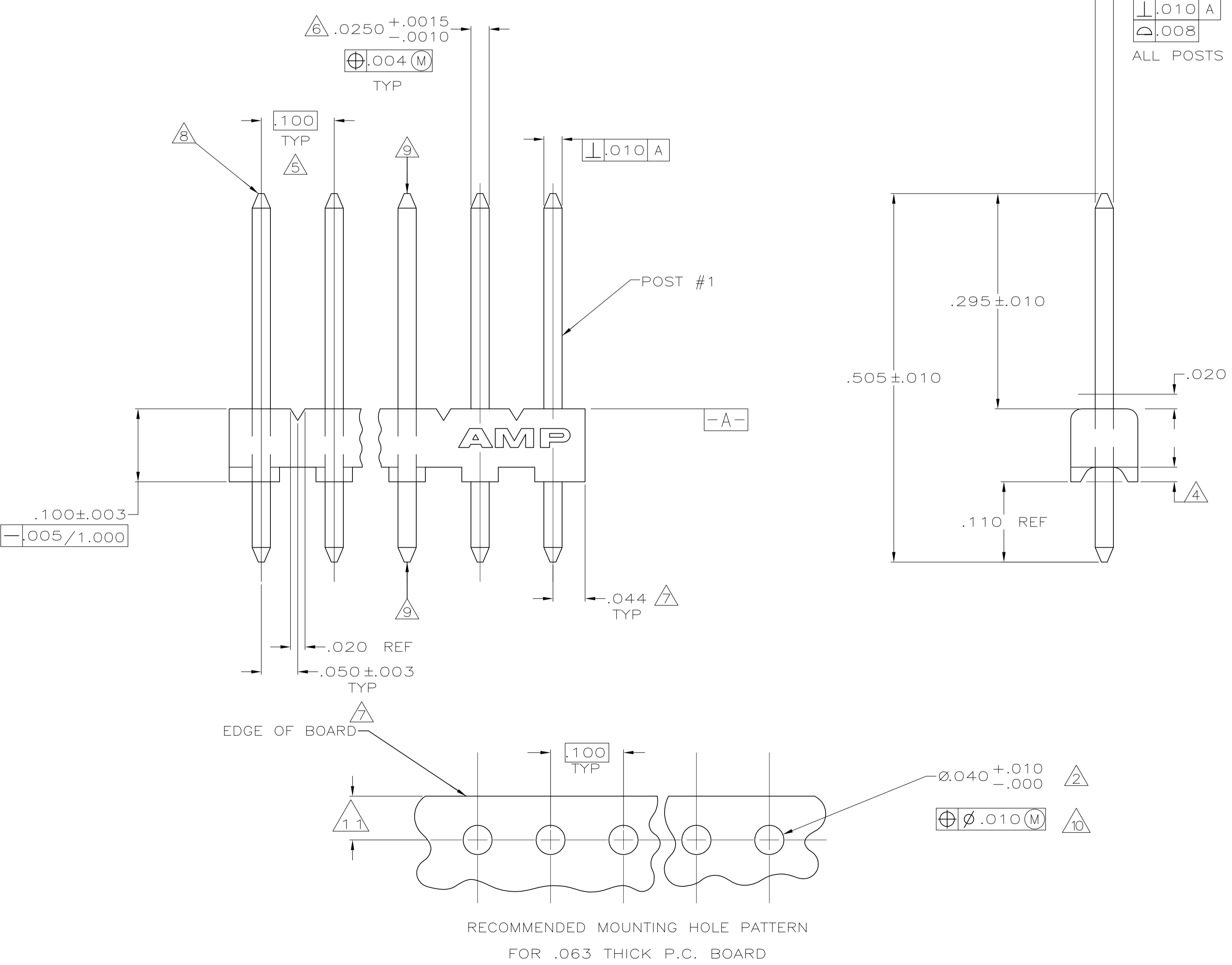
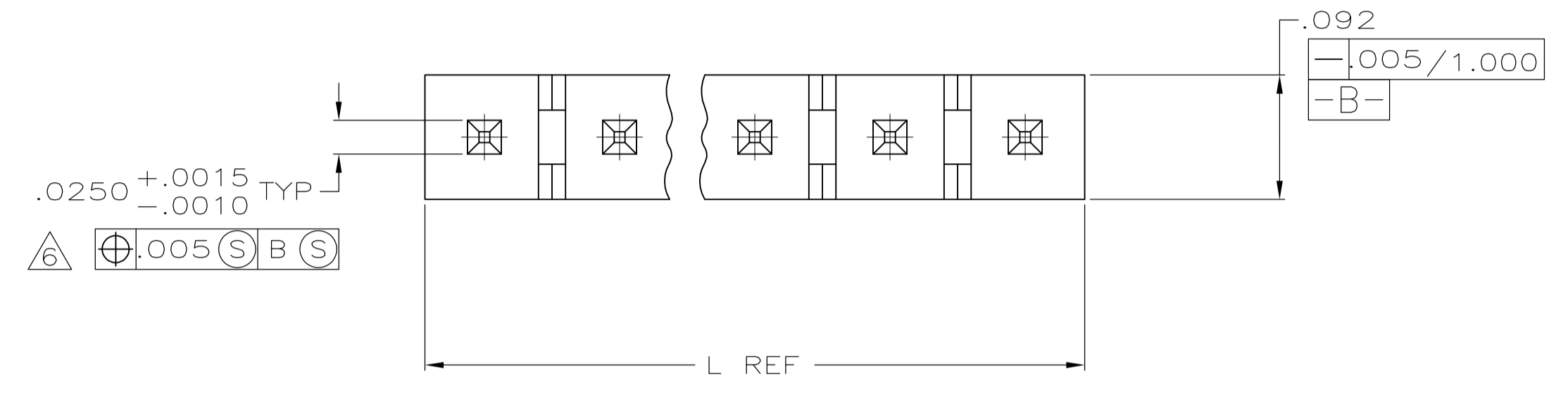


- 1 MATERIAL:
BASE: THERMOPLASTIC POLYESTER,UL 94V-0 (NATURAL).
POST: COPPER ALLOY (TIN OR TIN LEAD PLATED,.000150 MIN THK).
- 2 ONE HOLE MAY BE UNDERSIZED (.032-.035 DIA) FOR ASSEMBLY RETENTION DURING WAVE SOLDERING.
- 3 PARTS MUST COMPLY WITH AMP SOLDERABILITY SPEC 109-11-2.
- 4 PLASTIC AROUND POST PERMISSIBLE IN THIS AREA ONLY.
- 5 DIMENSION APPLIES WHEN HEADER IS HELD FLAT.
- 6 MEASURED AT $\perp A$
- 7 COORDINATE DIMENSION APPLIES FROM CENTER OF ACTUAL FEATURE.
- 8 RADIUS AT TIP PERMITTED, BOTH ENDS.
- 9 POST MUST WITHSTAND 3.0 LB MIN AXIAL FORCE IN BOTH DIRECTIONS WITHOUT DISLODGING.
- 10 SOLDER SIDE OF BOARD IS SHOWN.
- 11 DIMENSION SHOULD BE .060 MIN WHEN MATING WITH A MTA 100 CONNECTOR ASSEMBLY OR A CST 100 CONNECTOR.
- 12. AMP LOGO MAY OR MAY NOT APPEAR ON MOLDING HOUSING.



YES

28	2.788	70.82	28	5-644456-8
27	2.688	68.28	27	5-644456-7
26	2.588	65.74	26	5-644456-6
25	2.488	63.20	25	5-644456-5
24	2.388	60.66	24	5-644456-4
23	2.288	58.12	23	5-644456-3
22	2.188	55.58	22	5-644456-2
21	2.088	53.04	21	5-644456-1
20	1.988	50.50	20	5-644456-0
19	1.888	47.96	19	4-644456-9
18	1.788	45.42	18	4-644456-8
17	1.688	42.88	17	4-644456-7
16	1.588	40.34	16	4-644456-6
15	1.488	37.80	15	4-644456-5
14	1.388	35.26	14	4-644456-4
13	1.288	32.72	13	4-644456-3
12	1.188	30.18	12	4-644456-2
11	1.088	27.64	11	4-644456-1
10	.988	25.10	10	4-644456-0
9	.888	22.56	9	3-644456-9
8	.788	20.02	8	3-644456-8
7	.688	17.48	7	3-644456-7
6	.588	14.94	6	3-644456-6
5	.488	12.40	5	3-644456-5
4	.388	9.86	4	3-644456-4
3	.288	7.32	3	3-644456-3
2	.188	4.78	2	3-644456-2

NO

SUPERSEDED BY 5-644456-8	28	2.788	70.82	28	2-644456-8
SUPERSEDED BY 5-644456-7	27	2.688	68.28	27	2-644456-7
SUPERSEDED BY 5-644456-6	26	2.588	65.74	26	2-644456-6
SUPERSEDED BY 5-644456-5	25	2.488	63.20	25	2-644456-5
SUPERSEDED BY 5-644456-4	24	2.388	60.66	24	2-644456-4
SUPERSEDED BY 5-644456-3	23	2.288	58.12	23	2-644456-3
SUPERSEDED BY 5-644456-2	22	2.188	55.58	22	2-644456-2
SUPERSEDED BY 5-644456-1	21	2.088	53.04	21	2-644456-1
SUPERSEDED BY 5-644456-0	20	1.988	50.50	20	2-644456-0
SUPERSEDED BY 4-644456-9	19	1.888	47.96	19	1-644456-9
SUPERSEDED BY 4-644456-8	18	1.788	45.42	18	1-644456-8
SUPERSEDED BY 4-644456-7	17	1.688	42.88	17	1-644456-7
SUPERSEDED BY 4-644456-6	16	1.588	40.34	16	1-644456-6
SUPERSEDED BY 4-644456-5	15	1.488	37.80	15	1-644456-5
SUPERSEDED BY 4-644456-4	14	1.388	35.26	14	1-644456-4
SUPERSEDED BY 4-644456-3	13	1.288	32.72	13	1-644456-3
SUPERSEDED BY 4-644456-2	12	1.188	30.18	12	1-644456-2
SUPERSEDED BY 4-644456-1	11	1.088	27.64	11	1-644456-1
SUPERSEDED BY 4-644456-0	10	.988	25.10	10	1-644456-0
SUPERSEDED BY 3-644456-9	9	.888	22.56	9	644456-9
SUPERSEDED BY 3-644456-8	8	.788	20.02	8	644456-8
SUPERSEDED BY 3-644456-7	7	.688	17.48	7	644456-7
SUPERSEDED BY 3-644456-6	6	.588	14.94	6	644456-6
SUPERSEDED BY 3-644456-5	5	.488	12.40	5	644456-5
SUPERSEDED BY 3-644456-4	4	.388	9.86	4	644456-4
SUPERSEDED BY 3-644456-3	3	.288	7.32	3	644456-3
SUPERSEDED BY 3-644456-2	2	.188	4.78	2	644456-2

LEADFREE	NO. OF POSTS	IN	MM	NO. OF CIRCUITS
		L		

THIS DRAWING IS A CONTROLLED DOCUMENT.

DIMENSIONS: INCHES	TOLERANCES UNLESS OTHERWISE SPECIFIED:	DIN S. CARPENTER 23MAY2003	TE Connectivity
0 PLC ±	1 PLC ±	23MAY2003	MTA-100 HEADER ASSEMBLY, NARROW, .025 SQUARE STRAIGHT POST, TIN PLATED
2 PLC ±	3 PLC ±	APVD D. ROSSI 23MAY2003	NAME
4 PLC ±	ANGLES ±	PRODUCT SPEC	APPLICATION SPEC
MATERIAL	FINISH	WEIGHT	SIZE CASE CODE DRAWING NO RESTRICTED TO
		A1 00779 644456	SCALE 10:1 SHEET 1 OF 1 REV D2
CUSTOMER DRAWING		SCALE 10:1 SHEET 1 OF 1 REV D2	

Mouser Electronics

Authorized Distributor

Click to View Pricing, Inventory, Delivery & Lifecycle Information:

[TE Connectivity:](#)

[3-644456-4](#)