



Quality Products. Service Excellence.

Type 4X, 6P Enclosures *1555F Series*

Watertight, Flanged Lid, UL Listed Options

Features



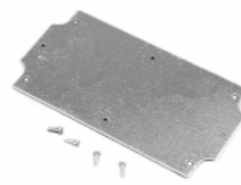
- Designed for harsh industrial environments or outdoor applications (security, outdoor wireless, controls etc. etc.)
- Ideally suited for mounting printed circuit boards, panels or DIN rail mounted components (see photo features for details).
- Designed for wall mounting. Interior is secure as lid screws are behind the lid. Can be made more secure if wall mounted with security screws (tamper resistant screws).
- Satin texture finish with smooth recessed surface on lid for a membrane keypad or label
- Standoffs molded in the interior of the lid & enclosure - designed for #4 x 1/4" self tapping screws (our part number 1555TS100)
- Choice of two materials:
 - General purpose ABS plastic (material carries a UL flammability rating of UL94 HB). Not recommended for outdoor use.
 - Polycarbonate (material carries a UL flammability rating of UL94 5VA @ 3mm) - Recommended for outdoor use.
- Color is a light gray (RAL 7035) to help keep heat absorption down.
- Gasketed lid with two piece "tongue & groove" construction provides protection against access of oil, dust and water.
- Gasket is one piece made from high temperature, U.L. listed silicone.
- Designed to meet NEMA Type 4, 4X, 6, 6P, 12 & 13 ratings which meet and exceed IP ratings up to and including IP68.
- Polycarbonate version is UL 508A listed (File # E65324).
- Flanged lid is secured with self captivating M4 stainless steel machine screws (included), threaded into integral stainless steel bushings for repetitive assembly & disassembly. All hardware is stainless steel to avoid corrosion caused by dissimilar metals.
- Flanged lid screws are self captivating (lid holes are threaded with the first installation of lid screws).
- Internal features are maximized for mounting options and vary with size:
 - Internal DIN rail mounting tabs molded into lid (except smaller 1555CF22 & 1555CF42 enclosures).
 - Standoffs (#6 self tapping screws) for P.C. board or inner panel



Photo Features



Cover features a smooth recessed area perfect for membrane keypads or labels. Base features robust mounting flanges capable of withstanding abuse.



Galvanized steel inner panels are available (refer to table below).



Internal features include mounting bosses for PC boards or inner panels. DIN rail mounting locations on all but size "C" models. Silicone gasket with tongue and grooves construction provides a water-tight seal.

Accessories

- Breather Kit
- Small Rainproof Ventilator
- Pole Mount Kit
- Pressure Compensation Plug
- Liquid-Tight, Strain Relief Cordgrips

Part Numbers

| ABS Part Number | Polycarb (UL Listed) Part Number | Length | Width | Height | Inner Panel | Replacement Gasket (Pair) |
|-----------------|----------------------------------|--------|-------|--------|-------------|---------------------------|
| 1555CF22GY | 1555C2F22GY | 4.70 | 2.60 | 1.65 | 1555CFPL | 1554CGASKET |
| 1555CF42GY | 1555C2F42GY | 4.70 | 2.60 | 2.44 | 1555CFPL | 1554CGASKET |
| 1555FF17GY | 1555F2F17GY | 4.70 | 3.60 | 1.47 | 1555FFPL | 1554FGASKET |
| 1555FF42GY | 1555F2F42GY | 4.70 | 3.60 | 2.44 | 1555FFPL | 1554FGASKET |
| 1555NF17GY | 1555N2F17GY | 4.70 | 4.70 | 1.47 | 1555NFPL | 1554NGASKET |
| 1555NF42GY | 1555N2F42GY | 4.70 | 4.70 | 2.44 | 1555NFPL | 1554NGASKET |
| 1555JF17GY | 1555J2F17GY | 6.30 | 3.60 | 1.47 | 1555JFPL | 1554JGASKET |
| 1555JF42GY | 1555J2F42GY | 6.30 | 3.60 | 2.44 | 1555JFPL | 1554JGASKET |
| 1555HF17GY | 1555H2F17GY | 7.10 | 4.70 | 1.47 | 1555HFPL | 1554HGASKET |
| 1555HF42GY | 1555H2F42GY | 7.10 | 4.70 | 2.44 | 1555HFPL | 1554HGASKET |

Data subject to change without notice

© 2018. Hammond Manufacturing Ltd. All rights reserved.

Mouser Electronics

Authorized Distributor

Click to View Pricing, Inventory, Delivery & Lifecycle Information:

Hammond:

[1555CF22GY](#) [1555C2F22GY](#) [1555CF42GY](#) [1555C2F42GY](#) [1555FF17GY](#) [1555F2F17GY](#) [1555FF42GY](#)
[1555F2F42GY](#) [1555JF17GY](#) [1555J2F17GY](#) [1555JF42GY](#) [1555J2F42GY](#) [1555CFPL](#) [1555FFPL](#) [1555JFPL](#)
[1555H2F17GY](#) [1555H2F42GY](#) [1555HF17GY](#) [1555HF42GY](#) [1555N2F17GY](#) [1555N2F42GY](#) [1555NF17GY](#)
[1555NF42GY](#) [1555HFPL](#) [1555NFPL](#)