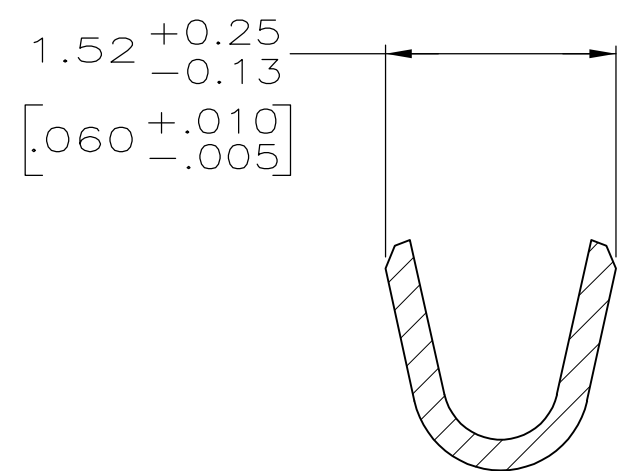
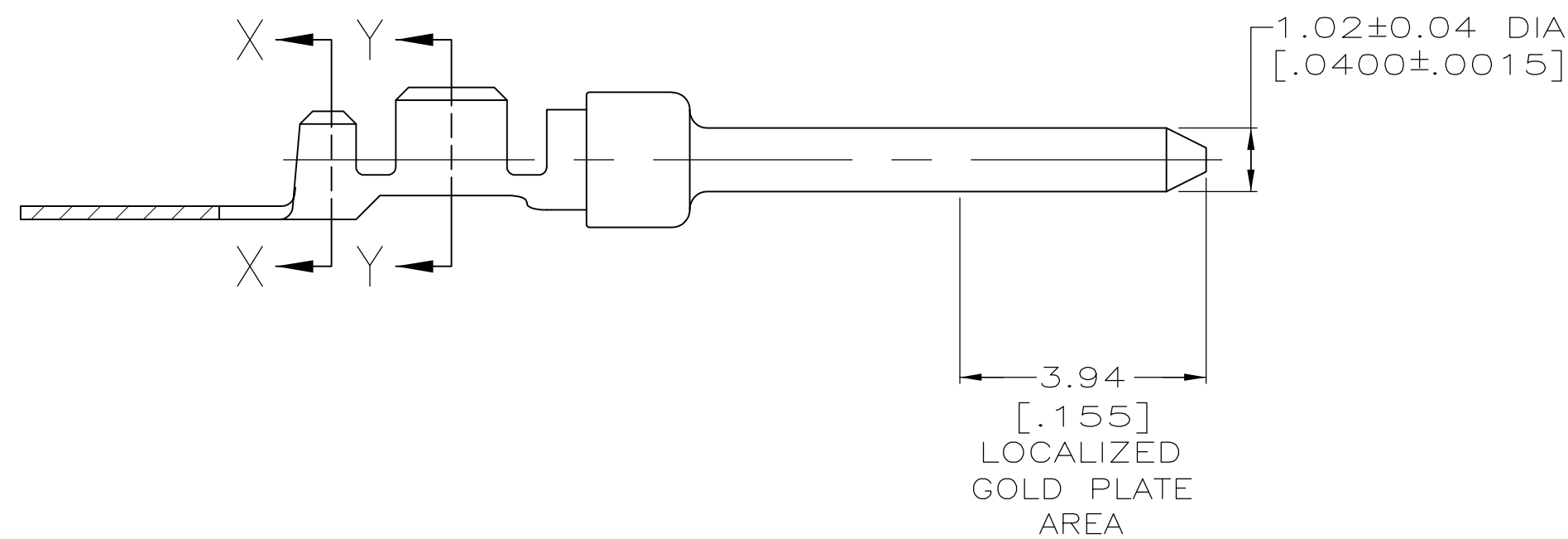
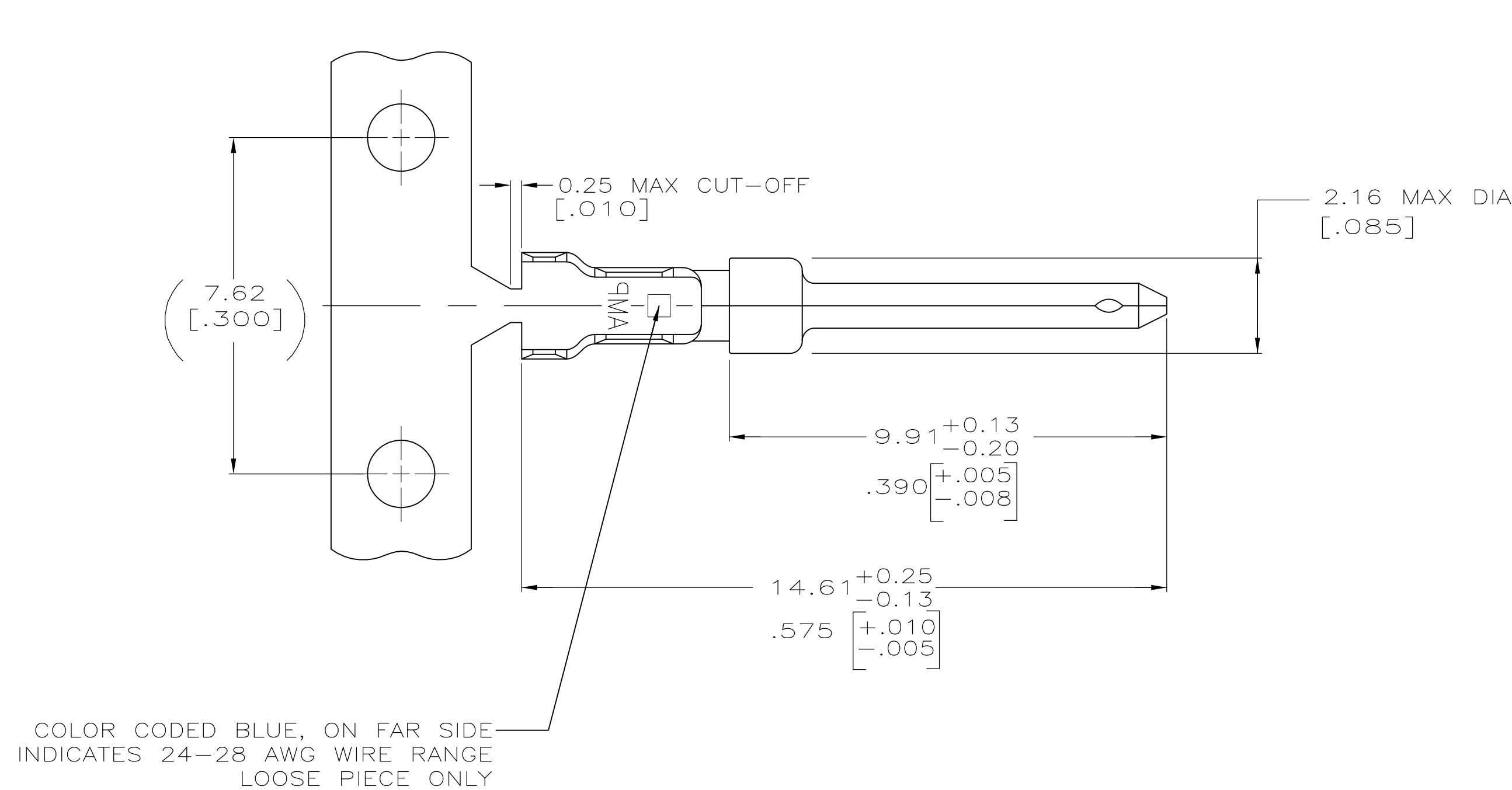


D

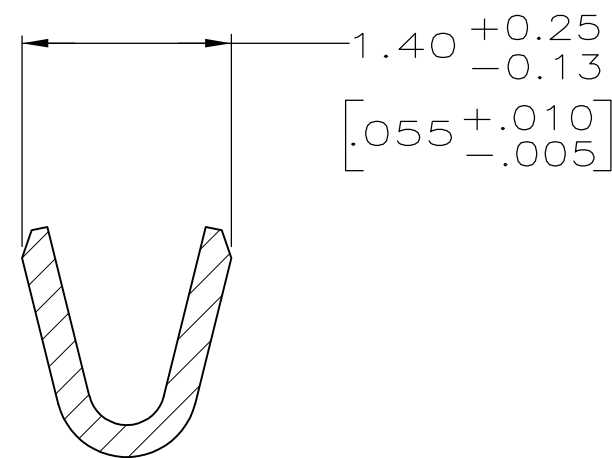
C

B

A



SECTION X—X  
INSULATION BARREL  
SCALE 20:1



SECTION Y—Y  
WIRE BARREL  
SCALE 20:1

1. FOR MINI-APPLICATOR AND STRIPPER CRIMPER.
2. FOR HAND TOOL USE ONLY.
3. WIRE RANGE OF 24-28, INSULATION RANGE OF .030-.040.
4. TIN PLATING MAY NOT APPEAR ON CARRIER STRIP.
5. GOLD FLASH IN LOCALIZED GOLD PLATE AREA,  
2.54µm [.000100] MIN TIN ON WIRE BARRELS, ALL OVER  
0.76µm [.000030] MIN NICKEL UNDERPLATE.
6. GOLD FLASH IN LOCALIZED GOLD PLATED AREA,  
0.76µm [.000030] MIN TIN ON WIRE BARRELS, ALL OVER  
0.76µm [.000030] MIN NICKEL UNDERPLATE.
7. GOLD PLATED IN LOCALIZED GOLD PLATE AREA AS FOLLOWS:  
0.76µm [.000030] MIN GOLD IN MATED AREA,  
2.54µm [.000100] MIN TIN ON WIRE BARRELS, ALL OVER  
1.27µm [.000050] MIN NICKEL UNDERPLATE.  
OR  
GOLD FLASH OVER  
PALLADIUM-NICKEL PLATE, 0.76µm [.000030] MIN TOTAL IN MATED AREA,  
2.54µm [.000100] MIN TIN ON WIRE BARRELS, ALL OVER  
1.27µm [.000050] MIN NICKEL UNDERPLATE.
8. FOR STANDARD APPLICATOR ONLY.

1	8	STRIP	1658540-6
2	2	LOOSE PIECE	1658540-5
3	1	STRIP	1658540-4
6	1	STRIP	1658540-3
3	2	LOOSE PIECE	1658540-2
5	1	STRIP	1658540-1
FINISH	USE	TYPE	PART NUMBER

THIS DRAWING IS A CONTROLLED DOCUMENT.		DWN L. VARELA - DOOKS CHK S. BOLASH APVD M. WALMSLEY	11-17-04 11-17-04 11-17-04	TE Connectivity	
DIMENSIONS: mm [INCHES]		TOLERANCES UNLESS OTHERWISE SPECIFIED:		NAME	
		0. PLC	± -	PRODUCT SPEC	
		1. PLC	± -	108-40005	
		2. PLC	± 0.13 [.005]	APPLICATION SPEC	
		3. PLC	± -	114-10000	
MATERIAL BRASS		FINISH SEE TABLE		SIZE A1	CAGE CODE 00779
				DRAWING NO 1658540	RESTRICTED TO -
				CUSTOMER DRAWING	
				SCALE 10:1	SHEET 1 OF 1
				REV D1	

# Mouser Electronics

Authorized Distributor

Click to View Pricing, Inventory, Delivery & Lifecycle Information:

[TE Connectivity:](#)

[1658540-6](#)