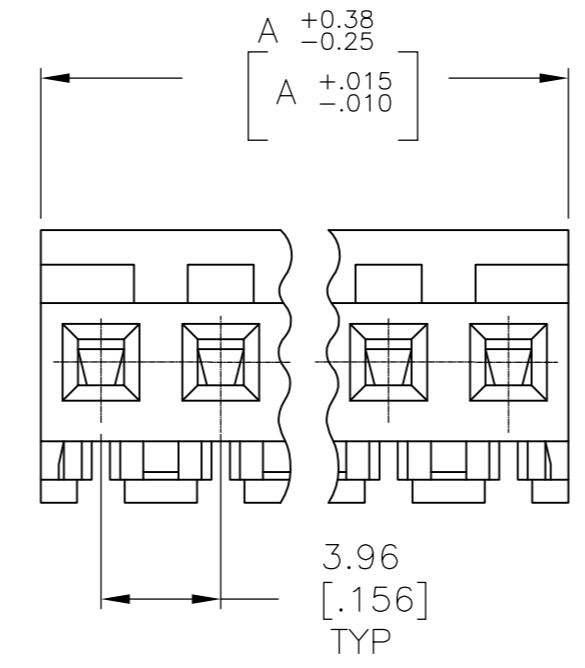
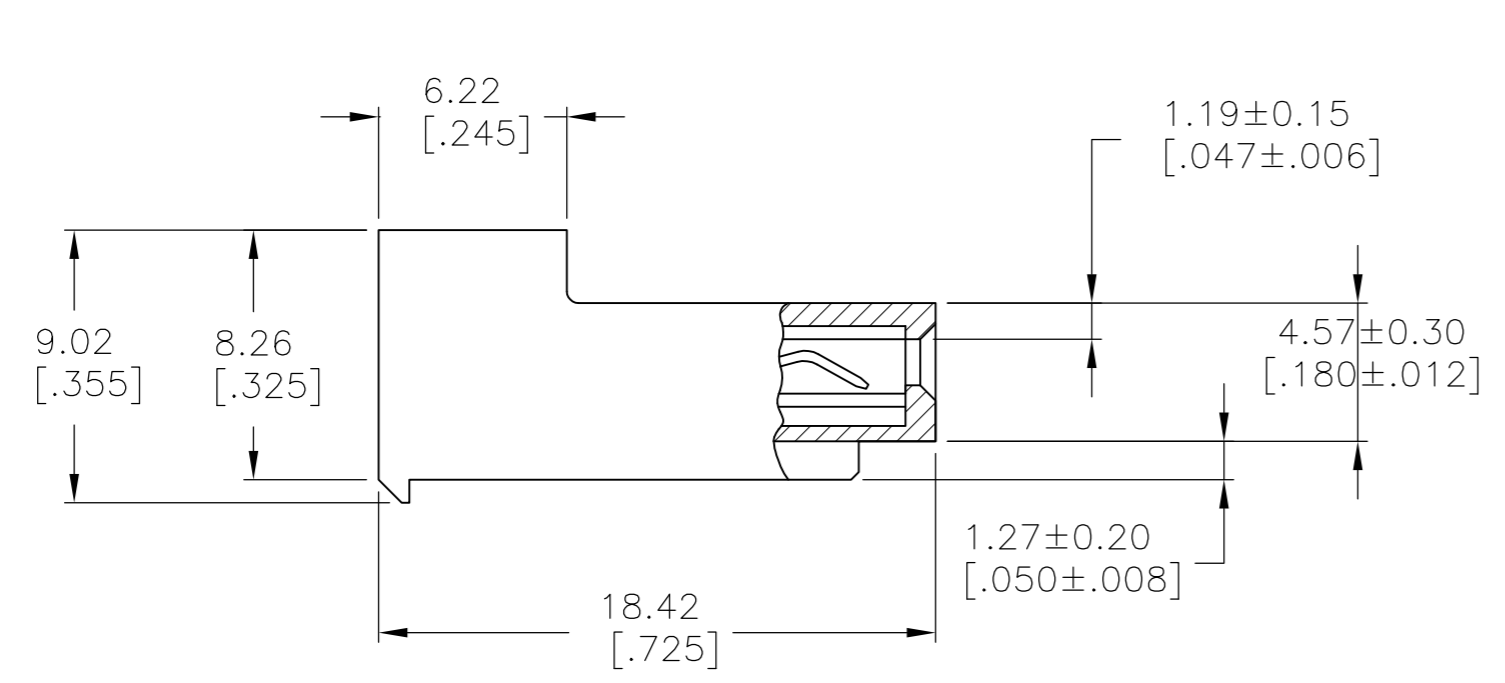
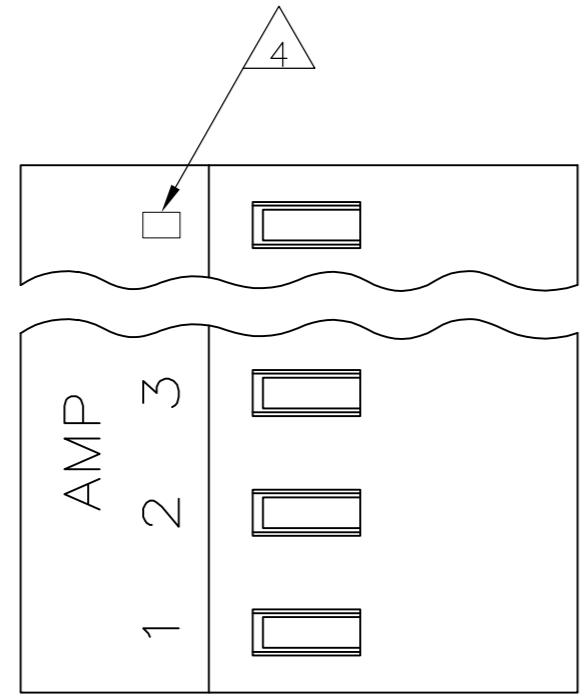


THIS DRAWING IS UNPUBLISHED. RELEASED FOR PUBLICATION  
 © COPYRIGHT - By - TE CONNECTIVITY ALL RIGHTS RESERVED.

| LOC | DIST | REVISIONS   |                           |           |        |
|-----|------|-------------|---------------------------|-----------|--------|
| P   | LTR  | DESCRIPTION | DATE                      | DWN       | APVD   |
| CM  | OO   | U2          | REVISED PER ECR-17-018200 | 09JAN2018 | BDA SG |



|              |    |            |
|--------------|----|------------|
| 95.10[3.744] | 24 | 5-640432-4 |
| 91.13[3.588] | 23 | 5-640432-3 |
| 87.17[3.432] | 22 | 5-640432-2 |
| 83.21[3.276] | 21 | 5-640432-1 |
| 79.25[3.120] | 20 | 5-640432-0 |
| 75.29[2.964] | 19 | 4-640432-9 |
| 71.32[2.808] | 18 | 4-640432-8 |
| 67.36[2.652] | 17 | 4-640432-7 |
| 63.40[2.496] | 16 | 4-640432-6 |
| 59.44[2.340] | 15 | 4-640432-5 |
| 55.47[2.184] | 14 | 4-640432-4 |
| 51.51[2.028] | 13 | 4-640432-3 |
| 47.55[1.872] | 12 | 4-640432-2 |
| 43.59[1.716] | 11 | 4-640432-1 |
| 39.62[1.560] | 10 | 4-640432-0 |
| 35.66[1.404] | 9  | 3-640432-9 |
| 31.70[1.248] | 8  | 3-640432-8 |
| 27.74[1.092] | 7  | 3-640432-7 |
| 23.77[.936]  | 6  | 3-640432-6 |
| 19.81[.780]  | 5  | 3-640432-5 |
| 15.85[.624]  | 4  | 3-640432-4 |
| 11.89[.468]  | 3  | 3-640432-3 |
| 7.92[.312]   | 2  | 3-640432-2 |

1 MATERIAL: CONNECTOR - NYLON UL94-V2 (YELLOW).  
 CONTACTS - 0.30[.012] THICK COPPER ALLOY  
 (BRIGHT TIN-LEAD 0.00203[.000080] MIN. THICK  
 FOR CONTACTS 640432-2 THRU 2-640432-4).  
 (MATTE WHISKER MITIGATED TIN 0.00203[.000080] MIN.  
 THICKNESS OVER NICKEL UNDERPLATE FOR 3-640432-2  
 THRU 5-640432-4).

2 CONTACTS ACCEPT 20 AWG WIRE WITH 2.41[.095] MAX INSULATION DIAMETER.

3 CONTACTS MUST ACCEPT 1.14±0.03[.045] POST AND REMAIN LOCKED IN POSITION.

4 IDENTIFICATION NUMBER FOR LAST CIRCUIT MAY NOT APPEAR ON ALL ASSEMBLIES.

5 DIMENSIONS IN BRACKETS ARE IN INCHES.

6 HOUSING FEATURES ARE: CLOSED END WITH LOCKING RAMP.

7 OBSOLETE PARTS: OBSOLETE CIS STREAMLINING PER D.RENAUD/D.SINIS

8 OBSOLETE PARTS

|   |                          |              |    |            |
|---|--------------------------|--------------|----|------------|
| 7 | SUPERCEDED BY 5-640432-4 | 95.10[3.744] | 24 | 2-640432-4 |
|   | SUPERCEDED BY 3-640432-3 | 91.13[3.588] | 23 | 2-640432-3 |
|   | SUPERCEDED BY 5-640432-2 | 87.17[3.432] | 22 | 2-640432-2 |
|   | SUPERCEDED BY 5-640432-1 | 83.21[3.276] | 21 | 2-640432-1 |
|   | SUPERCEDED BY 5-640432-0 | 79.25[3.120] | 20 | 1-640432-0 |
|   | SUPERCEDED BY 4-640432-9 | 75.29[2.964] | 19 | 1-640432-9 |
|   | SUPERCEDED BY 4-640432-8 | 71.32[2.808] | 18 | 1-640432-8 |
|   | SUPERCEDED BY 4-640432-7 | 67.36[2.652] | 17 | 1-640432-7 |
|   | SUPERCEDED BY 4-640432-6 | 63.40[2.496] | 16 | 1-640432-6 |
|   | SUPERCEDED BY 4-640432-5 | 59.44[2.340] | 15 | 1-640432-5 |
|   | SUPERCEDED BY 4-640432-4 | 55.47[2.184] | 14 | 1-640432-4 |
|   | SUPERCEDED BY 4-640432-3 | 51.51[2.028] | 13 | 1-640432-3 |
|   | SUPERCEDED BY 4-640432-2 | 47.55[1.872] | 12 | 1-640432-2 |
|   | SUPERCEDED BY 4-640432-1 | 43.59[1.716] | 11 | 1-640432-1 |
|   | SUPERCEDED BY 4-640432-0 | 39.62[1.560] | 10 | 1-640432-0 |
|   | SUPERCEDED BY 3-640432-9 | 35.66[1.404] | 9  | 1-640432-9 |
|   | SUPERCEDED BY 3-640432-8 | 31.70[1.248] | 8  | 1-640432-8 |
|   | SUPERCEDED BY 3-640432-7 | 27.74[1.092] | 7  | 1-640432-7 |
|   | SUPERCEDED BY 3-640432-6 | 23.77[.936]  | 6  | 1-640432-6 |
|   | SUPERCEDED BY 3-640432-5 | 19.81[.780]  | 5  | 1-640432-5 |
|   | SUPERCEDED BY 3-640432-4 | 15.85[.624]  | 4  | 1-640432-4 |
|   | SUPERCEDED BY 3-640432-3 | 11.89[.468]  | 3  | 1-640432-3 |
|   | SUPERCEDED BY 3-640432-2 | 7.92[.312]   | 2  | 1-640432-2 |

|   |  |                                  |   |                    |
|---|--|----------------------------------|---|--------------------|
| THIS DRAWING IS A CONTROLLED DOCUMENT.  |  | DWN<br>S. CARPENTER<br>13AUG2003 | TE Connectivity                                 |                    |
| DIMENSIONS:<br>mm [INCHES]  |  | CHK<br>D. BOSSI<br>13AUG2003     | NAME  |                    |
| TOLERANCES UNLESS OTHERWISE SPECIFIED:  |  | APVD<br>D. BOSSI<br>13AUG2003    | MTA 156 CONNECTOR ASSEMBLY,<br>20 AWG, STANDARD |                    |
| 0 PLC ± -<br>1 PLC ± -<br>2 PLC ± -<br>3 PLC ± 0.13 [.005]<br>4 PLC ± -<br>ANGLES ± - |  | PRODUCT SPEC<br>108-1051         | SIZE<br>A2                                      | CAGE CODE<br>00779 |
| MATERIAL<br>1   |  | APPLICATION SPEC<br>114-1020     | DRAWING NO<br>C-640432                          | RESTRICTED TO<br>- |
| FINISH<br>1   |  | WEIGHT                           | SCALE<br>4:1                                    | SHEET<br>1 OF 1    |
|   |  | CUSTOMER DRAWING                 | REV<br>U2                                       |                    |