

4

3

2

1

THIS DRAWING IS UNPUBLISHED.

RELEASED FOR PUBLICATION

© COPYRIGHT

ALL RIGHTS RESERVED.

LOC

DIST


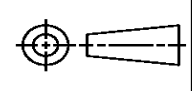
REVISIONS

P	LTR	DESCRIPTION	DATE	DWN	APVD
	G1	ECR-13-017849	29NOV13	RS	LZ

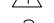
REPLACED BY OCEAN STYLE APPLICATOR PART
NUMBER 2151170-1

FOR REPLACEMENT PARTS FOR APPLICATOR 1528054
REFER TO ADDITIONAL PAGE(S). SPARE PARTS KIT (IF LISTED)
WILL REMAIN AVAILABLE.

THE REPLACEMENT OCEAN STYLE APPLICATOR HAS THE
SAME TERMINATOR/PRESS INTERFACE AS APPLICATOR
1528054

THIS DRAWING IS A CONTROLLED DOCUMENT.		DWN R.SHEN		 TE Connectivity			
DIMENSIONS:		CHK LJ.ZHANG					
		APVD U.GUO		NAME			
		PRODUCT SPEC		FINE ADJ SIDE FD HD-I APPL			
		APPLICATION SPEC					
MATERIAL		WEIGHT		SIZE A 3	CAGE CODE	DRAWING NO C- 1528054	RESTRICTED TO
FINISH		CUSTOMER ACCESSIBLE PRODUCTION DRAWING		SCALE		SHEET 1 OF 2	REV G1

[illegible][illegible]



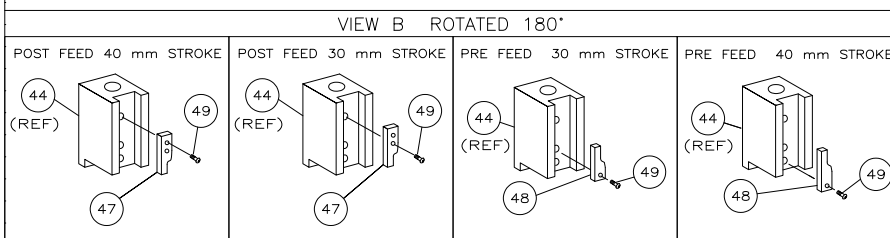
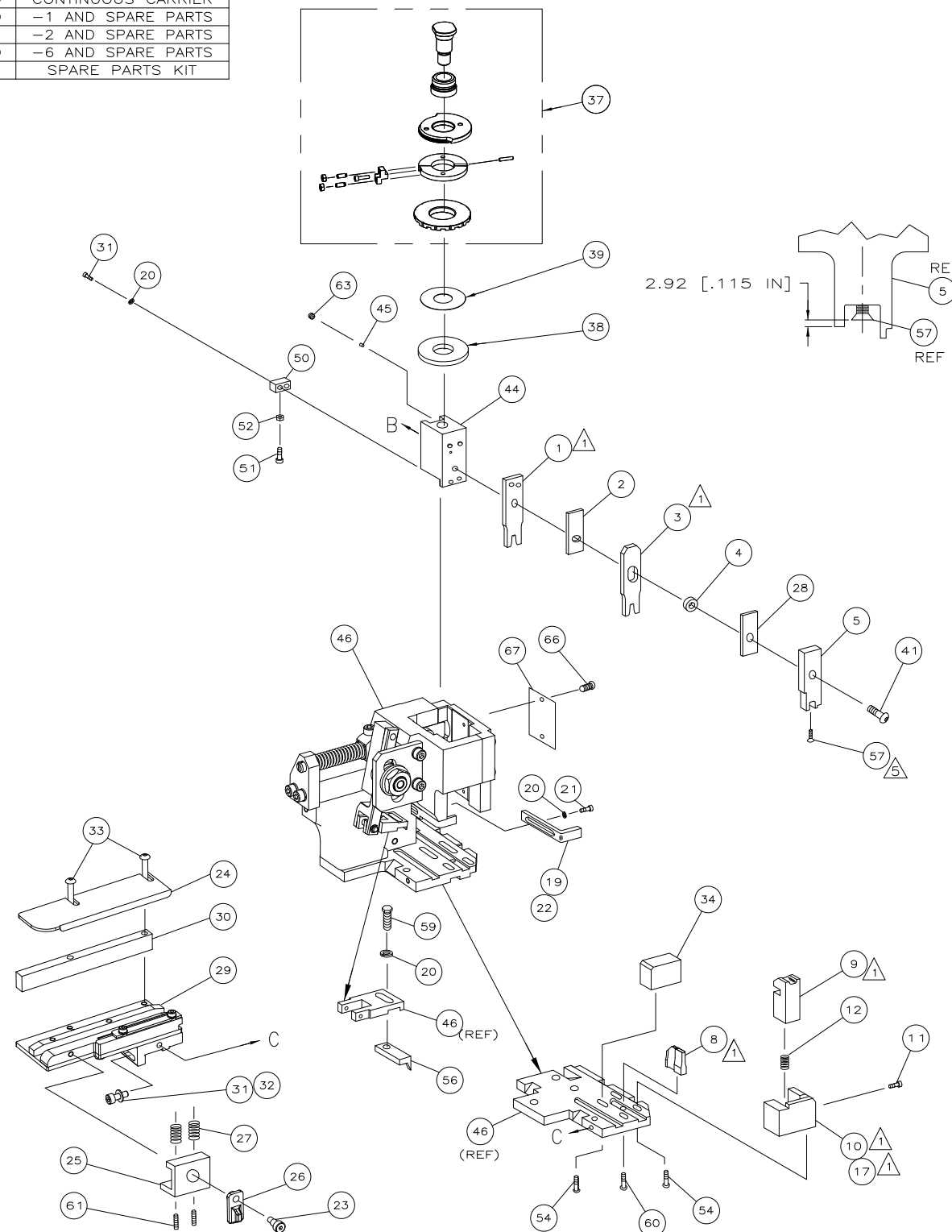
1. RECOMMENDED SPARE PARTS.

2. GREASE RAM, CAM, CAM FOLLOWER AND FEED ROD LIGHTLY.

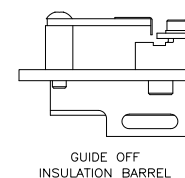
3. LUBRICATE DAILY PER THE APPLICATOR INSTRUCTION SHEET SUPPLIED WITH THE APPLICATOR.

4. THIS APPLICATOR APPLIES TERMINAL WITH A SEAL.
SEAL PT.NO. 963530 INS. RANGE 1.4 – 1.9 DIA
SEAL PT.NO. 964972 INS. RANGE 1.9 – 2.1 DIA
SEAL PT.NO. 964971 INS. RANGE 1.2–1.6 DIA (0.5SQMM WIRE)

5. APPLY TORQ–SEAL IN ALLEN SOCKET TO FILL HOLE AFTER FLAT HD HAS BEEN ADJUSTED TO CORRECT HEIGHT AT QUALIFICATION. APPLY #1–23419–5 LOC–TITE TO THREADS.



* **WARNING:**
ON INSTALLATION, SET WIRE DISC TO LARGEST WIRE SIZE
SETTING. USE OF SETTINGS BELOW MIN REQ'D CRIMP
HEIGHT SETTING WILL CAUSE DAMAGE TO CRIMP TOOLING.



Mouser Electronics

Authorized Distributor

Click to View Pricing, Inventory, Delivery & Lifecycle Information:

[TE Connectivity:](#)

[1528054-1](#)