



Quality Products. Service Excellence.

ABS Plastic Watertight Enclosures *RP Series*

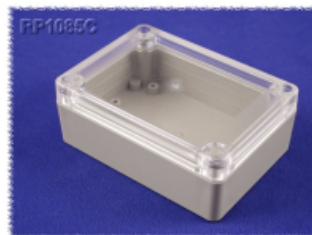
Solid and Clear Lid

Key Features



- Ideally suited for mounting printed circuit boards or components.
- Molded from general purpose ABS plastic (material carries a UL flammability rating of UL94 HB).
- Color is a light gray with a light texture. Also available with a clear polycarbonate lid (see table below).
- Gasketed lid with two piece "tongue & groove" construction provides protection against access of oil, dust, and water.
- Rubber gasket is included and must be field installed.
- Lid includes smooth recessed area for membrane, label or silkscreen (see chart below for recess size).
- Designed to meet IP 65.
- Lid is secured with self captivating M3.5 stainless steel machine screws (included), threaded into integral stainless steel bushings (for repetitive assembly & disassembly). All stainless steel hardware to avoid corrosion caused by dissimilar metals.
- Lid screws are self captivating (lid holes are threaded with the first installation of lid screws).
- Internal features are maximized for mounting options:
 - Internal DIN rail mounting tabs molded in.
 - Options vary with size.

Photos



Shown with a clear lid.

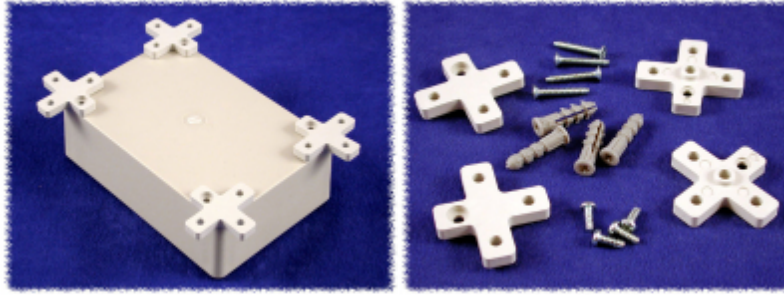


Internal view. Includes gasket and hardware.

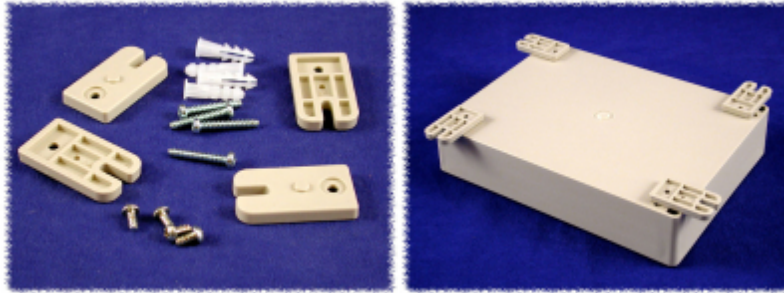
Wall Mounting Feet (ABS Plastic)

- See table below for compatibility.
- Includes mounting hardware and wall anchors.
- Shown below attached to ABS plastic RP series enclosure.

Part Number **MF0045**



Part Number **MF0055**



Part Number (Opaque Lid)	Part Number (Clear Lid)	Length	Width	Height (Including Lid)	Lid Recess Size	Mounting Feet Kit
RP1025	RP1025C	2.56	2.36	1.57	1.54 x 2.05	MF0045
RP1065	RP1065C	3.35	3.15	2.17	2.32 x 2.83	MF0045
RP1085	RP1085C	4.13	2.95	1.57	2.56 x 3.07	MF0045
RP1095	RP1095C	4.13	2.95	2.17	2.56 x 3.07	MF0045
RP1135	RP1135C	4.92	3.35	2.17	3.03 x 3.90	MF0045
RP1205	RP1205C	5.71	4.13	1.57	4.57 x 3.78	MF0045
RP1215	RP1215C	5.71	4.13	2.36	4.57 x 3.78	MF0045
RP1175	RP1175C	6.50	3.35	2.17	2.76 x 5.47	MF0045
RP1245	RP1245C	6.50	4.92	2.95	5.43 x 4.57	MF0045
RP1285	RP1285C	7.32	5.75	2.95	5.08 x 5.91	MF0045
RP1455	RP1455C	8.66	6.50	2.36	7.28 x 5.91	MF0055
RP1465	RP1465C	8.66	6.50	3.35	7.28 x 5.91	MF0055

Data subject to change without notice

© 2018. Hammond Manufacturing Ltd. All rights reserved.

Mouser Electronics

Authorized Distributor

Click to View Pricing, Inventory, Delivery & Lifecycle Information:

Hammond:

[RP1175](#) [RP1465](#) [RP1245](#) [RP1065](#) [RP1175C](#) [RP1025C](#) [RP1065C](#) [RP1205C](#) [RP1285C](#) [RP1085](#) [RP1095C](#)
[RP1465C](#) [RP1025](#) [RP1455](#) [RP1285](#) [RP1135C](#) [RP1455C](#) [RP1245C](#) [RP1205](#) [RP1095](#) [RP1135](#) [RP1085C](#)
[RP1215C](#) [RP1215](#) [MF0045](#) [MF0055](#)