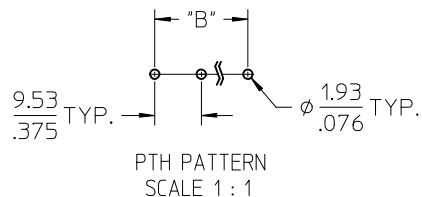
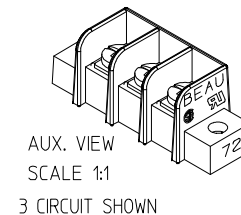
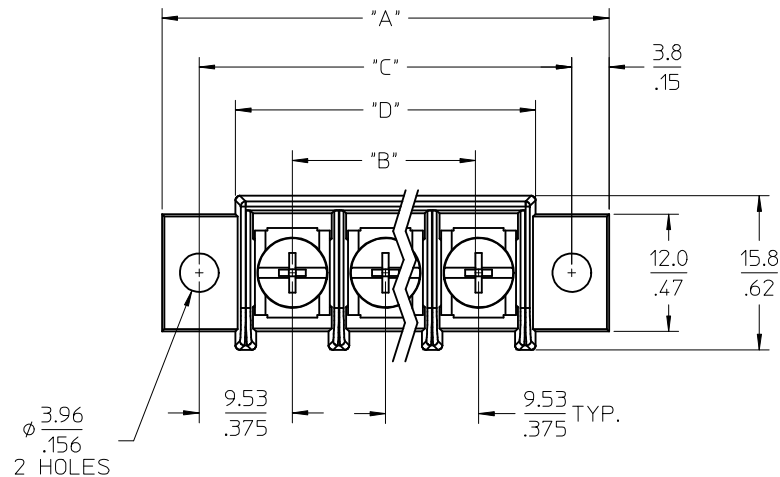


	10	9		8		7		6	5	4	3	2	38724
QTY. OF CIRC. "XX"	DIM. "A"		DIM. "B"		DIM. "C"		DIM. "D"		ASSEMBLY MATERIAL # (STANDARD)	ASSEMBLY MATERIAL # (-50 OPT.) (B)			
	mm	inch	mm	inch	mm	inch	mm	inch					
02	36.2	1.43	9.53	.375	28.58	1.125	21.1	.83	387244002	387244802			
03	45.7	1.80	19.05	.750	38.10	1.500	30.7	1.21	387244003	387244803			
04	55.2	2.18	28.58	1.125	47.63	1.875	40.2	1.58	387244004	387244804			
05	64.8	2.55	38.10	1.500	57.15	2.250	49.7	1.96	387244005	387244805			
06	74.3	2.93	47.63	1.875	66.68	2.625	59.2	2.33	387244006	387244806			
07	83.8	3.30	57.15	2.250	76.20	3.000	68.8	2.71	387244007	387244807			
08	93.3	3.68	66.68	2.625	85.73	3.375	78.3	3.08	387244008	387244808			
09	102.9	4.05	76.20	3.000	95.25	3.750	87.8	3.46	387244009	387244809			
10	112.4	4.43	85.73	3.375	104.78	4.125	97.3	3.83	387244010	387244810			
11	121.9	4.80	95.25	3.750	114.30	4.500	106.9	4.21	387244011	387244811			
12	131.4	5.18	104.78	4.125	123.83	4.875	116.4	4.58	387244012	387244812			
13	141.0	5.55	114.30	4.500	133.35	5.250	125.9	4.96	387244013	387244813			
14	150.5	5.93	123.83	4.875	142.88	5.625	135.4	5.33	387244014	387244814			
15	160.0	6.30	133.35	5.250	152.40	6.000	145.0	5.71	387244015	387244815			
16	169.5	6.68	142.88	5.625	161.93	6.375	154.5	6.08	387244016	387244816			

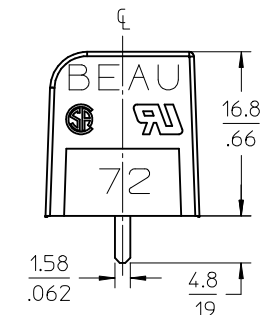
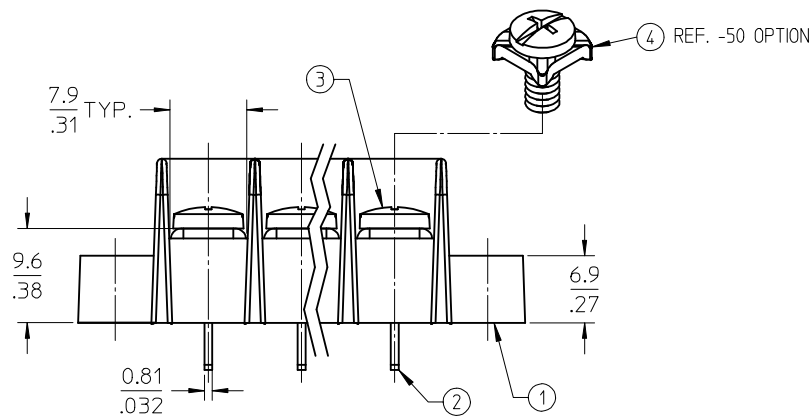


NOTES:

1. MATERIAL: SEE TABLE
2. FINISHES: SEE TABLE
3. PRODUCT SPECIFICATION: NOT REQUIRED
4. "XX" REFERS TO THE QUANTITY OF CIRCUITS
5. ROHS COMPLIANT

ITEM	QTY.	DESCRIPTION	MATERIAL	FINISH
4	XX	SCREW W/WASHER, #6-32X.250, PANHD, PH-SL	STEEL	ZN. CLEAR CHROMATE
3	XX	SCREW, #6-32X.250, BHD, PHIL-SLOT	STEEL	ZN. CLEAR CHROMATE
2	XX	TERMINAL, PC	BRASS	TIN PLATE
1	1	INSULATOR, SR, CS, MOLDED MTG.	POLYESTER (PBT)	BLACK

Rev. E 2006/04/15



ADD -50 PART NUMS.		QUALITY SYMBOLS		GENERAL TOLERANCES (UNLESS SPECIFIED)		DIMENSION STYLE		SCALE		DESIGN UNITS		THIRD ANGLE PROJECTION	
EC NO: WNA2009-0426		2009/02/06		mm		MM/IN		2:1		INCH			
DRAWN: JENC INAS		2009/02/10		4 PLACES ± ---		DRAWN BY C. YORK		DATE 2005/06/07		TITLE		9.53MM [.375"] SR BTS, PC ASSY, CLOSED SIDE (72R5XX)	
CHKD: CYORK		2009/02/10		3 PLACES ± ---		CHECKED BY G. ROBERTSON		DATE 2005/06/13		MOLEX INCORPORATED		SHEET NO. 1 OF 1	
APPR: JMACNEIL		2009/02/10		2 PLACES ± 0.13		APPROVED BY G. ROBERTSON		DATE 2005/06/13		DOCUMENT NO. SD-38724-001			
				1 PLACE ± 0.3		MATERIAL NO.		SEE CHART					
				ANGULAR ± 2 °		SIZE B		THIS DRAWING CONTAINS INFORMATION THAT IS PROPRIETARY TO MOLEX INCORPORATED AND SHOULD NOT BE USED WITHOUT WRITTEN PERMISSION					
				DRAFT WHERE APPLICABLE MUST REMAIN WITHIN DIMENSIONS									

Mouser Electronics

Authorized Distributor

Click to View Pricing, Inventory, Delivery & Lifecycle Information:

Molex:

38724-4011