

PRODUCT NUMBER
91615-YXXZWLF

ROHS COMPATIBLE. SEE NOTE 7

OPTIONAL LETTER SEE SHEET 2
N: PRODUCT WITH TYPE MARKING ON CONNECTOR

OPTIONAL LETTER

A: PRODUCT WITH PICK UP CAP PACKED IN TAPE & REEL SEE TA856.

B: PRODUCT WITH PICK UP CAP PACKED IN TUBE.

NUMBER OF POSITIONS PER ROW: 03 UP TO 30.
MORE THAN 30 POSITIONS ON SPECIAL REQUEST.

PLATING CODE

3 = 0.76µm GOLD ON CONTACT AREA.

2µm MIN MATTE TIN ON TAIL.

4 = 2µm MIN MATTE TIN FULL PLATED

1.27µm Ni MINUNDERPLATING

NOTES:

- 1 - HOUSING MAT'L: THERMOPLASTIC GLASS FILLED FLAME RETARDANT PER UL 94 V-0 COLOR: GREY.
- 2 - TERMINAL MATERIAL: PHOSPHOR BRONZE.
- 3 - PACKAGING:
3 UP TO 4 POSITIONS PRODUCT PACKED IN PLASTIC BOX.
5 UP TO 30 POSITIONS PRODUCT PACKED IN TUBE.
WHOLE 91615-303B PRODUCT PACKED IN TUBE.
- 4 - TO DETERMINE DIMENSIONS:
N = NUMBER OF POSITIONS PER ROW
EXAMPLE: 8 POS: ((N+2)x2.54)-0.08=25.32 mm.
- 5 - RECOMMENDED IR PROFILE PER TA842.
- 6 - Ø2.65 MINI FOR PICK & PLACE ASSEMBLY(=0 INSERTION FORCE).
- 7 - ROHS COMPATIBLE PRODUCT SPECIFICATIONS

d - PLATING:

- "LF" MEANS THE PRODUCT IS LEAD-FREE,
2µm MINIMUM MATTE TIN OVER 1.27µm
MINIMUM NICKEL UNDERPLATE.

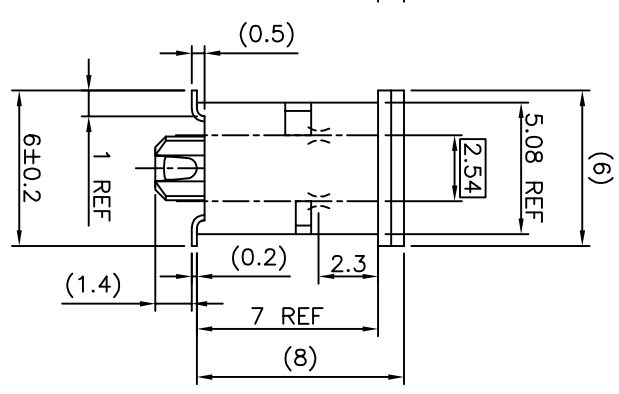
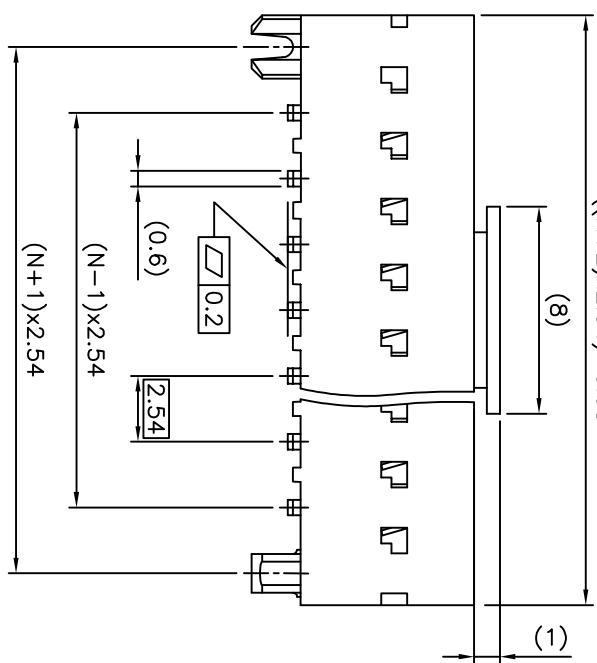
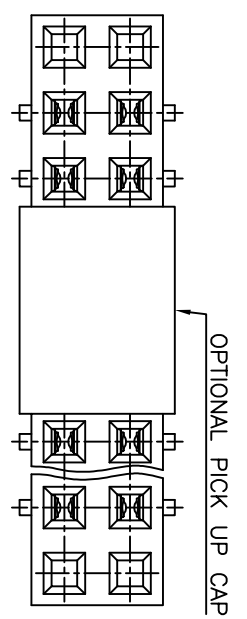
b - MANUFACTURING PROCESS COMPATIBILITY

- THE HOUSING WILL WITHSTAND EXPOSURE TO
260°C PEAK TEMPERATURE FOR 30 SECONDS
MAX IN A CONVECTION, INFRA-RED OR VAPOR
PHASE OR REFLOW OVEN.

c - LABELING:

- MEETS PACKAGING SPECS AS PER GS-14-920

d - LEGAL STATEMENT: SEE GS-47-0004



mat'l. code		SEE NOTES		ISO 1302	tolerance	ISO 406	ISO 1001	projection	product family
ltr	ecn no	dr	date	tolerances unless otherwise specified	linear	40.3		mm	DUBOX
AB	F04-0347	DIE	04.11.10						
AC	F06-0137	DIE	06.02.27						
AD	F06-0204	DIE	06.06.23	#2					
AE	F07-0169	DIE	07.03.30	dr	P NIZZI		95.11.17		
AF	B-19123	LMU	14.10.21	engf	P.NZ		01.07.23		
				chr	P.NZ		01.07.23		
				dppd	JF.N		01.07.23		

sheet	revision	AE	D	B					
index	sheet	1	2	3					

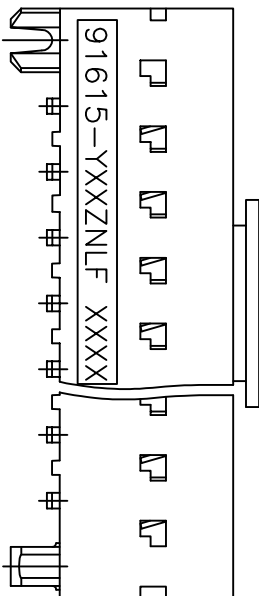
title
BtB RECEPT.
VERT DR SMT
sheet 1 of 3
size A3
type CUSTOMER Drawing

PRODUCT NUMBER
91615-YXXZNLF

ROHS COMPATIBLE, SEE NOTE 7

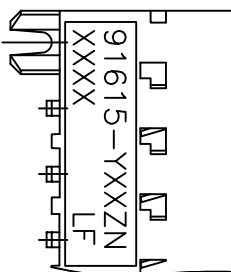
APPLICATION SPECIFIC

PRINTING METHOD FOR 91615-Y07 UP TO -Y50
MARKING: PART NUMBER AND DATE CODE



91615-YXXZNLF XXXX
YEAR CODE
WEEK CODE
FOR OTHER OPTION
LETTERS SEE SHEET 1
NUMBER OF POS.
PLATING CODE

PRINTING METHOD FOR 91615-Y03 UP TO -Y07



form: A3

1

2

3

4

5

6

mat'l. code		surface		tolerance		projection		product family	
ltr	ecn no	dr	date	ISO 1302	ISO 406	ISO 1101	ISO 1101	title	DUBOX
A	F10379	DLE	01.07.23	tolerances unless otherwise specified	±0.3	linear	mm	BtB RECEPT.	
B	F04-0347	DLE	04.11.10	angles				VERT DR SMT	
C	F06-0137	DLE	06.02.27	#2			mm		
D	F06-0204	DLE	06.06.23	dr	DLE	01.07.23	mm		
E	B-19123	LMU	14.10.21	lengr	P.NZ	01.07.23	mm		
				chr	P.NZ	01.07.23	mm		
				apptd	JF.N	01.07.23	mm		
sheet	revision								
index	sheet								



product family
DUBOX

title
BtB RECEPT.
VERT DR SMT

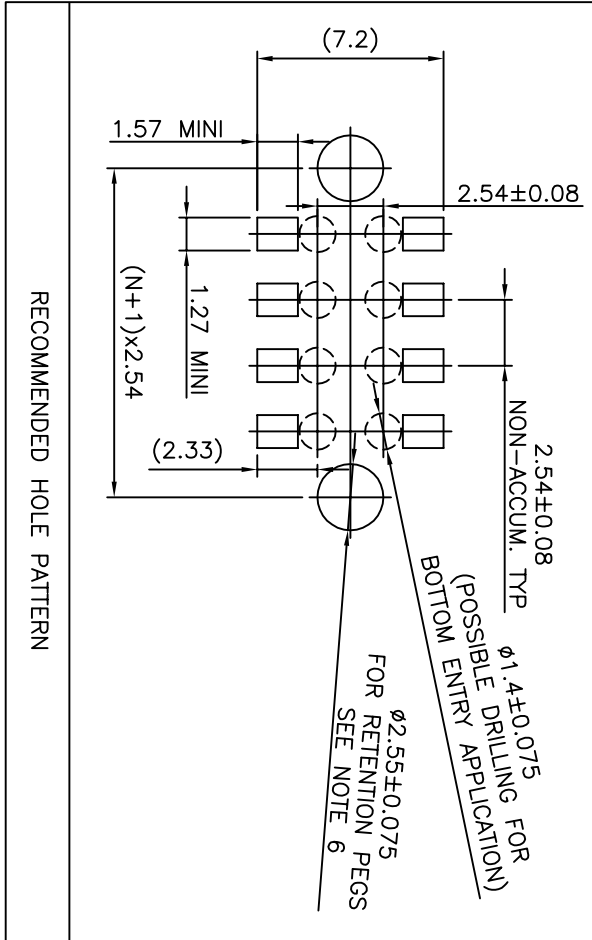
dwg no
91615

sheet 2 of -
A3

size
A3

type
CUSTOMER

Drwngg



mat'l. code		surface		tolerance		projection		product family	
ISO 1302		ISO 406 ISO 1101		mm		DUBOX		title	
A F04-034/DLE 04.11.10		tolerances unless otherwise specified		±0.3		FCI		BtB RECEPT.	
B F06-0204/DLE 06.06.23		linear		scale N/A		dwg no		VERT DR SMT	
dr		DLE		04.11.10		type		CUSTOMER	
engr		PNZ		04.11.10		sheet 3 of -		size	
chr		PNZ		04.11.10		A3		Drawing	
appd		P NZ		04.11.10		sheet		revision	
sheet		index		sheet		sheet		sheet	

Mouser Electronics

Authorized Distributor

Click to View Pricing, Inventory, Delivery & Lifecycle Information:

[FCI / Amphenol:](#)

[91615-316A](#) [91615-316ALF](#) [91615-303ALF](#) [91615-304ALF](#) [91615-305ALF](#) [91615-306ALF](#) [91615-307ALF](#) [91615-308ALF](#) [91615-309A](#) [91615-309ALF](#) [91615-310ALF](#) [91615-310B](#) [91615-310BLF](#) [91615-311ALF](#) [91615-312ALF](#) [91615-313ALF](#) [91615-314ALF](#) [91615-315ALF](#) [91615-318ALF](#) [91615-318LF](#) [91615-320ALF](#) [91615-320BLF](#) [91615-322ALF](#) [91615-322LF](#) [91615-323ALF](#) [91615-324ALF](#) [91615-325ALF](#) [91615-403ALF](#) [91615-403LF](#) [91615-404ALF](#) [91615-404LF](#) [91615-405ALF](#) [91615-405LF](#) [91615-406ALF](#) [91615-406LF](#) [91615-407ALF](#) [91615-407LF](#) [91615-408ALF](#) [91615-408LF](#) [91615-409ALF](#) [91615-409LF](#) [91615-410ALF](#) [91615-410LF](#) [91615-411ALF](#) [91615-411LF](#) [91615-412ALF](#) [91615-412LF](#) [91615-413ALF](#) [91615-413LF](#) [91615-414ALF](#) [91615-414LF](#) [91615-415ALF](#) [91615-415LF](#) [91615-416ALF](#) [91615-416LF](#) [91615-417LF](#) [91615-418ALF](#) [91615-418LF](#) [91615-420ALF](#) [91615-420LF](#) [91615-421LF](#) [91615-422ALF](#) [91615-422LF](#) [91615-423ALF](#) [91615-423LF](#) [91615-424ALF](#) [91615-424LF](#) [91615-425ALF](#) [91615-425LF](#) [91615-410BLF](#) [91615-319](#) [91615-320](#) [91615-303LF](#) [91615-304LF](#) [91615-305LF](#) [91615-306LF](#) [91615-307LF](#) [91615-308LF](#) [91615-309LF](#) [91615-310LF](#) [91615-311LF](#) [91615-312LF](#) [91615-313LF](#) [91615-314LF](#) [91615-315LF](#) [91615-316LF](#) [91615-317LF](#) [91615-319LF](#) [91615-320LF](#) [91615-321LF](#) [91615-323LF](#) [91615-324LF](#) [91615-325LF](#) [91615-419LF](#) [91615-305ANLF](#) [91615-310ANLF](#) [91615-312ANLF](#) [91615-313ANLF](#) [91615-320ANLF](#) [91615-321BLF](#)