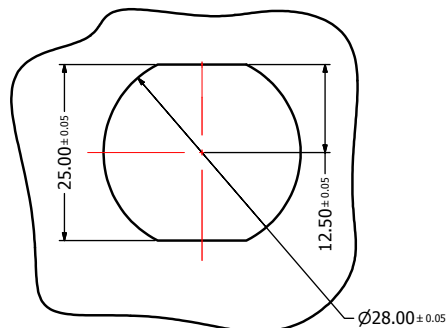
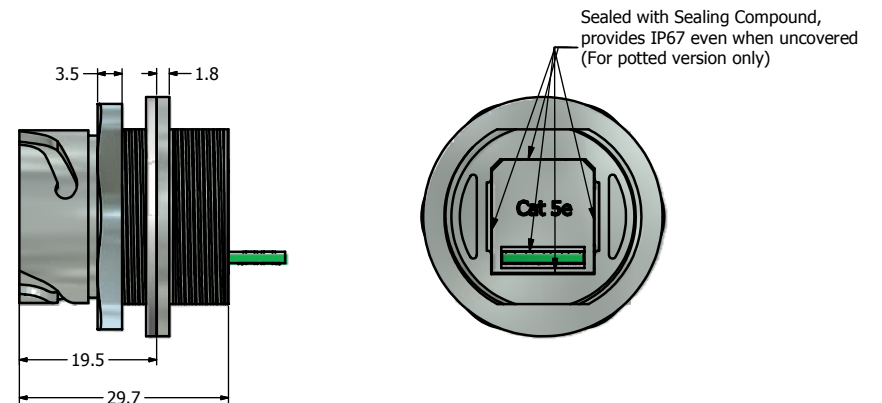
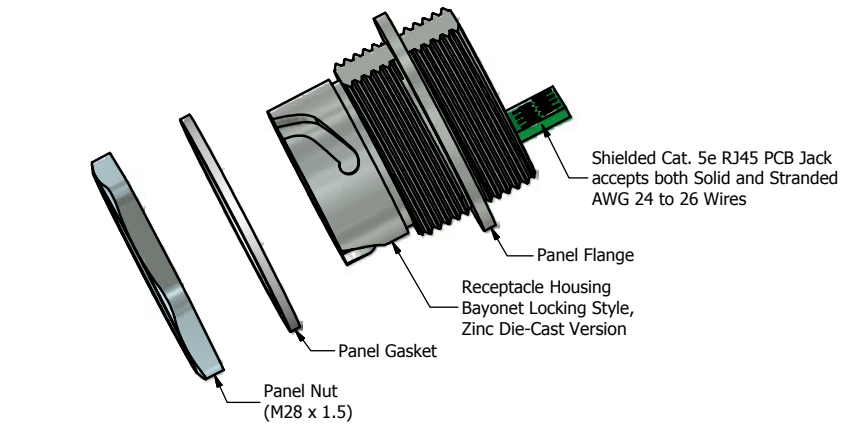
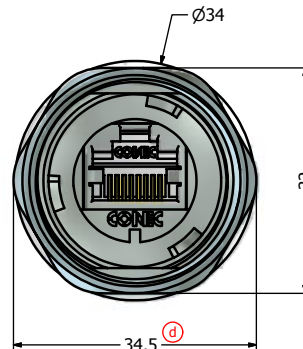
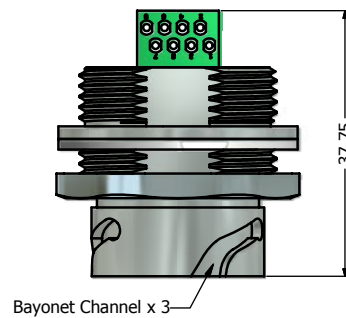


Recommended Single-D (d)
Panel Cutout



Recommended Double-D (c)
Panel Cutout





Notes:

- Electrical Specifications:
 - Meets EIA/TIA-568-B.2 Cat.5e Specification
 - Contact Resistance: 20mOhm max.
 - Insulation Resistance: 500MOhm min. @ 100 VDC
 - Current Rating: 1.2A max. at 25° C
 - Working Voltage: 100 VDC
 - DWV: 1000 VDC/60s Contact to Contact, 1500 VDC/60s Contact to Metal Shell
 - Operating Temperature: -40° C to +85° C
- Material and Finish:
 - Receptacle Housing: Zinc Die-cast, Finish: Nickel Plated
 - Panel Nut: Brass, Finish: Nickel Plated
 - Panel Gasket: Silicon, Color: White
 - RJ45 PCB Jack Metal Shell: Copper Alloy, Nickel Plated
 - RJ45 PCB Jack Plastic Housing: Glass filled PBT UL94 V-0, Color: Black
 - RJ45 PCB Jack Contacts: Phosphor Bronze, Finish: 50u" Gold min. over Nickel
- Connector can be front or rear mounted to a maximum panel thickness of 3.2mm.
- IP67 rated when fully mated with the appropriate connector
- RoHS compliant

Directive 2002/95/EC RoHS Compliant

(b) (d)	Description	Part Number
	Nickel Plated Zinc Die-Cast with Shielded Cat5e RJ45 PCB Jack	17-101784
	Potted Nickel Plated Zinc Die-Cast with Shielded Cat5e RJ45 PCB Jack	17-102184

THIS DRAWING MAY NOT BE COPIED OR REPRODUCED IN ANY WAY, AND MAY NOT BE PASSED ON TO A THIRD PARTY WITHOUT WRITTEN PERMISSION. OWNERSHIP AND COPYRIGHT OF CONEC CORPORATION	DOT NOT ALTER CAD DRAWING BY HAND	Customer:				Tolerance Unless otherwise specified			Scale: NTS	Dim. in mm
		Name	Title	Approval Date	0 PLC ±0.50 1 PLC ±0.38 2 PLC ±0.25 3 PLC ±0.10 ANGLES ±3°	Autodesk Inventor	Material: See Notes			
						2010	Date	Name	Title: Receptacle Assembly Kit with Cat. 5e RJ45 PCB Jack Nickel Plated Zinc Die-Cast Version	
						Draw.	May 20	Vincent Ke		
						Appd.	May 20	J. Chaudry		
		d	3 x d	Mar/02/2011	Vincent ke	Norm			Drawing No.: 17K1A146	
		c	1 x c	Jan/28/2011	Vincent ke	D-old				
		b	3 x b	Dec/16/2010	Vincent ke					
		a	original							
Rev.	Changes	Date	Name				Part No.: SEE TABLE ABOVE			

DIN A3
Sheet 1/1

Mouser Electronics

Authorized Distributor

Click to View Pricing, Inventory, Delivery & Lifecycle Information:

[CONEC:](#)

[17-102184](#)