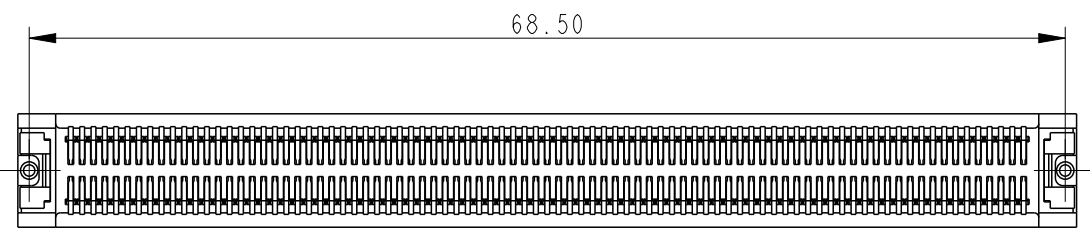
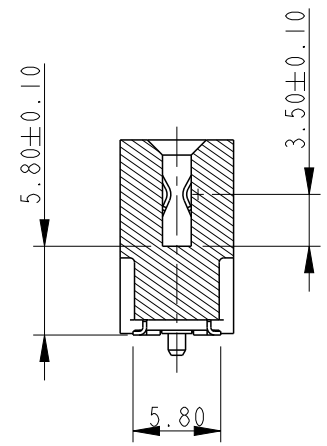
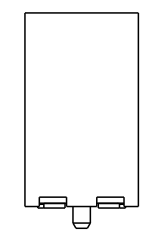
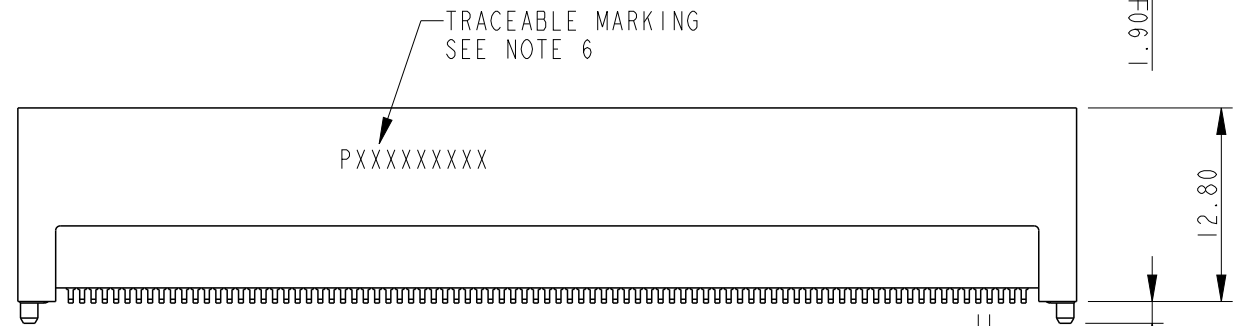
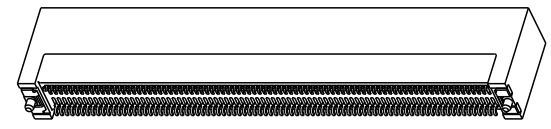
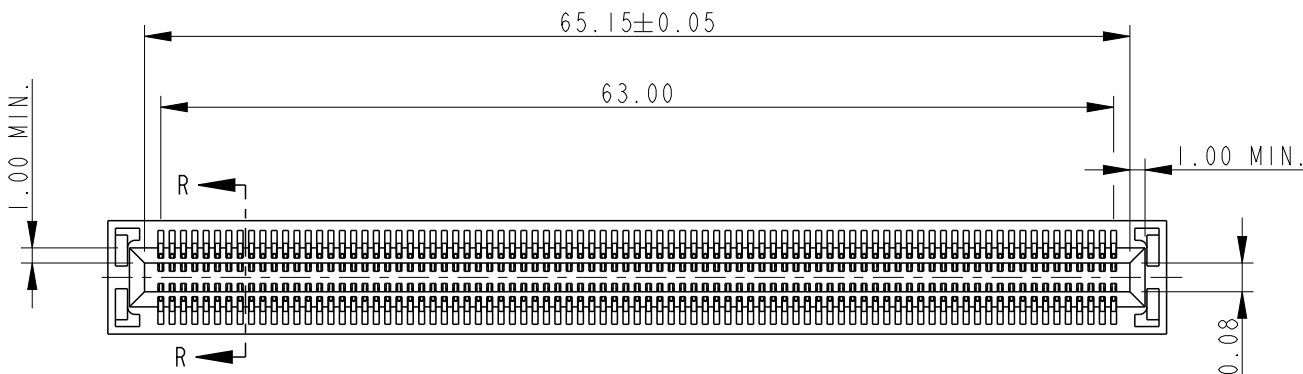


PART NUMBER 10058835-1000LF



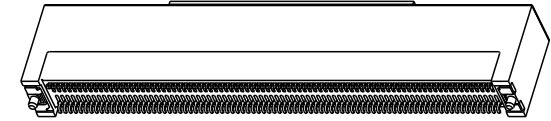
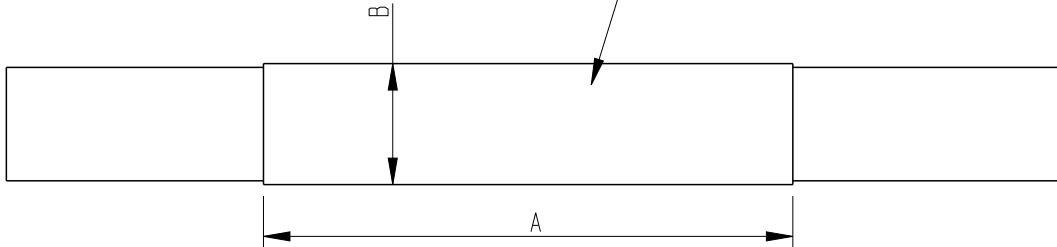
spec ref	*	dr	w wcadmin	2006/08/30	projection	MM	size	A4	scale	1:1														
tolerance std	TOLERANCES UNLESS OTHERWISE SPECIFIED	eng	Wei Yang	2014/08/27				ecn no	ELX-DG-18450-1															
ASME Y14.5		chr	Terry Qiu	2014/09/17		product family		rel level	Released															
surface	<table border="1"> <tr> <td>linear</td> <td>0.X</td> <td>±0.3</td> </tr> <tr> <td></td> <td>0.XX</td> <td>±0.20</td> </tr> <tr> <td></td> <td>0.XXX</td> <td>±0.100</td> </tr> <tr> <td>angular</td> <td>0°</td> <td>±2°</td> </tr> </table>	linear	0.X	±0.3		0.XX	±0.20		0.XXX	±0.100	angular	0°	±2°	appr	Pei-Ming Zheng	2014/09/19		title	SMT TYPE ASS'Y		dwg no	10058835	rev	H
linear	0.X	±0.3																						
	0.XX	±0.20																						
	0.XXX	±0.100																						
angular	0°	±2°																						
ASME Y14.5		www.fci.com	cat. no.	*	Product - Customer Drw	sheet 1 of 6																		

PrdE File - REV C - 2009-06-09

PART NUMBER
10058835-1001LF
10058835-1003LF

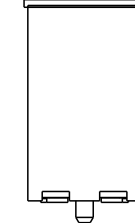
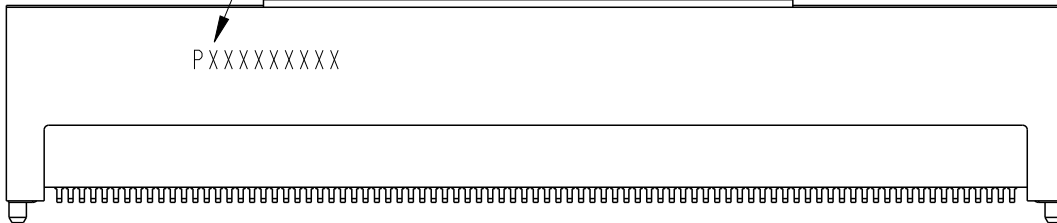


MYLAR FOR PLACE AND PICK
THICKNESS 0.12MM



TRACEABLE MARKING
SEE NOTE 6

PXXXXXXXXX



PART NUMBER	DIM "A"±0.5	DIM "B"±0.3
10058835-1001LF	35	8.0
10058835-1003LF	22	7.0

NOTE: ALL THE CONNECTOR DIMENSIONS REFER TO PART NUMBER 10058835-1000LF

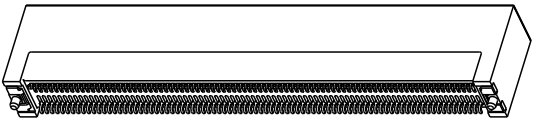
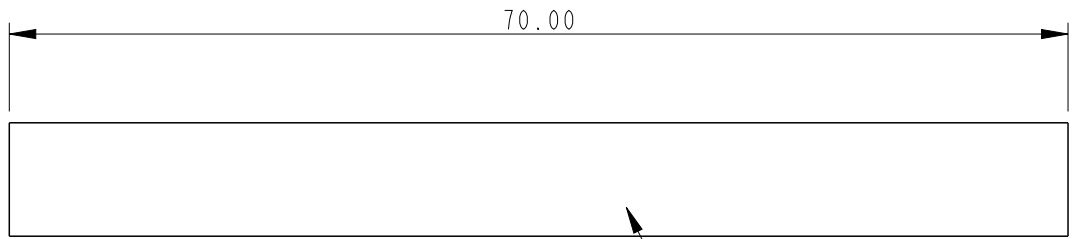
spec ref	*	dr	w wadmin	2006/08/30	projection	MM	size	A4	scale	1:1
tolerance std	TOLERANCES UNLESS OTHERWISE SPECIFIED	eng	Wei Yang	2014/08/27			←→	ecn no	ELX-DG-18450-1	
ASME Y14.5		chr	Terry Qiu	2014/09/17		product family		rel level	Released	
-		appr	Pei-Ming Zheng	2014/09/19	product family		rel level	Released		
surface	linear	0.X	±0.3		title	SMT TYPE ASS'Y	dwg no	10058835	rev	H
ASME Y14.5		0.XX	±0.20							
	0.XXX	±0.100								
angular	0°	±2°	www.fci.com	cat. no.	*	Product - Customer Drw	sheet 2 of 6			

ProE File - REV C - 2009-06-09

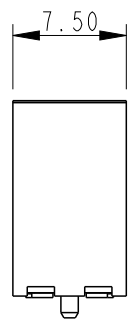
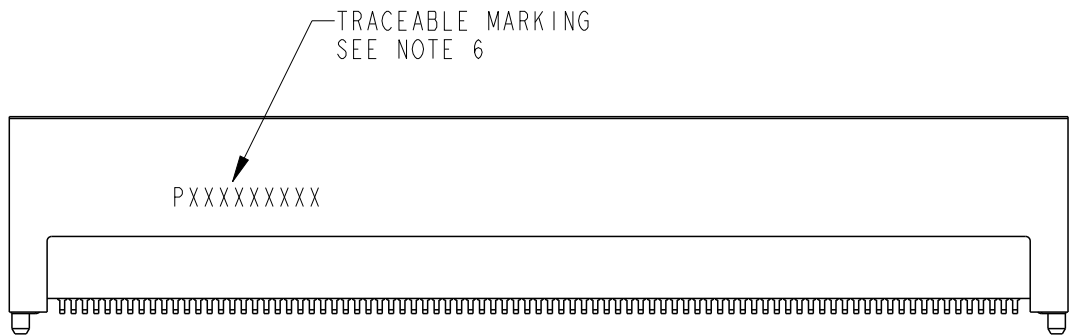


Copyright FCI.

PART NUMBER 10058835-1002LF



MYLAR FOR PLACE AND PICK THICKNESS 0.12MM



NOTE: ALL THE CONNECTOR DIMENSIONS REFER TO PART NUMBER 10058835-1000LF

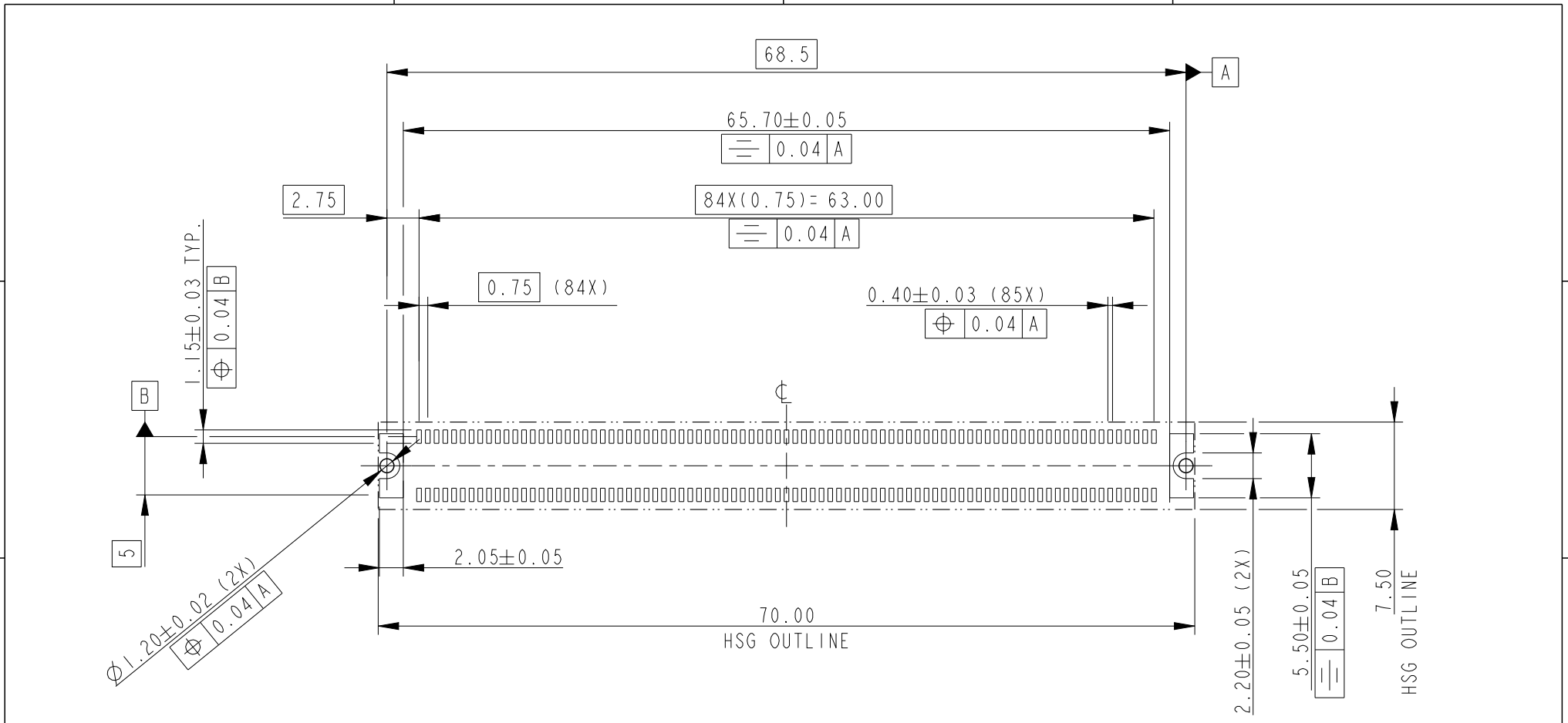


spec ref *		dr wcadmin		2006/08/30	projection 	MM ←→	size A4	scale 1:1
tolerance std ASME Y14.5		eng Wei Yang		2014/08/27			ecn no ELX-DG-18450-1	
-		chr Terry Qiu		2014/09/17			rel level Released	
surface ✓		appr Pei-Ming Zheng		2014/09/19	product family		rev	
ASME Y14.5		linear	0.X ±0.3	title SMT TYPE ASS'Y MICRO TCA		dwg no 10058835		H
			0.XX ±0.20					
			0.XXX ±0.100					
		angular	0° ±2°	www.fci.com		cat. no. *		Product - Customer Drw
						sheet 3 of 6		

Print File - REV C - 2009-06-09



Copyright FCI.



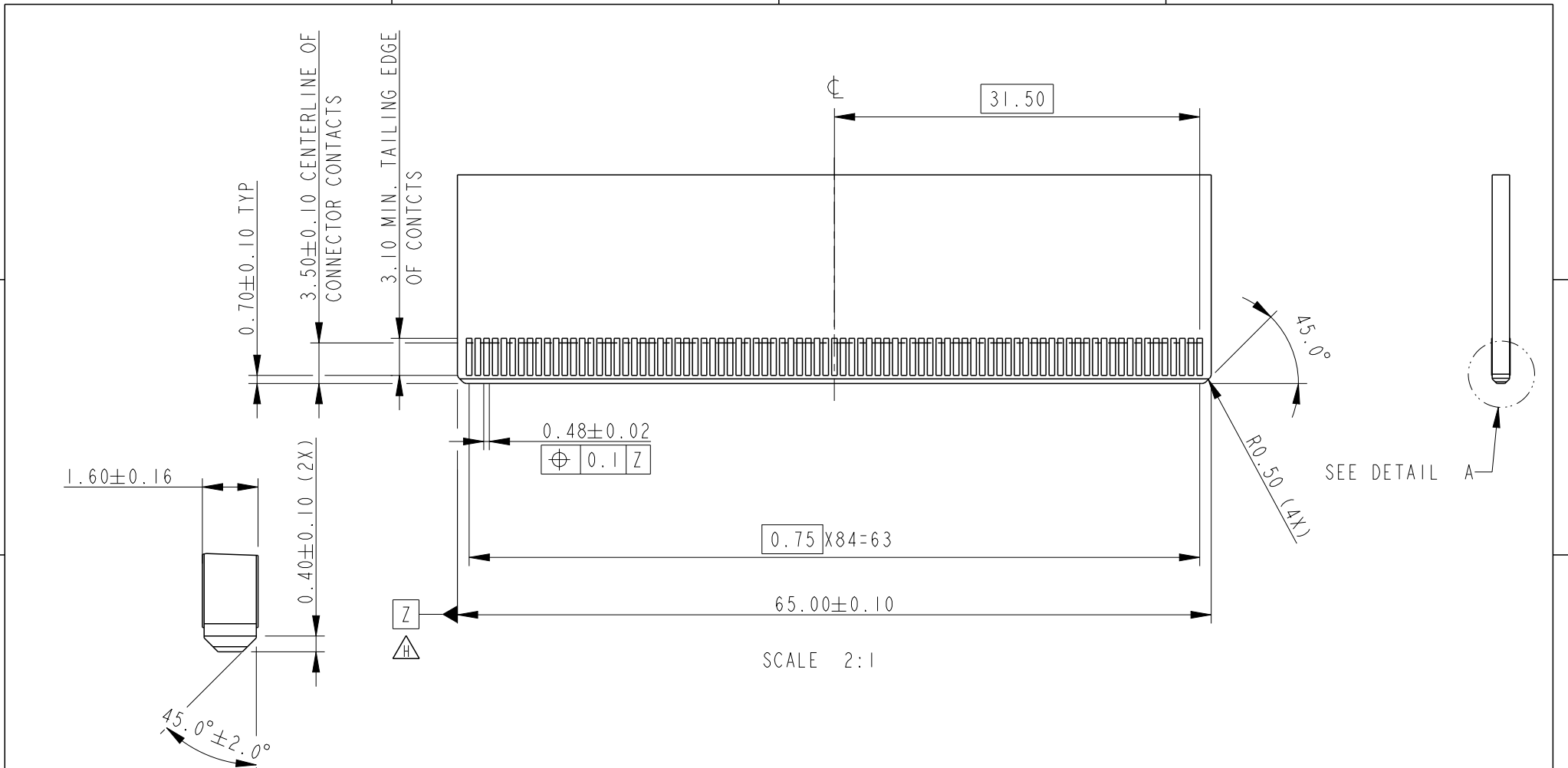
RECOMMENDED PCB LAYOUT
(SEE PICMG MICROTCA BASE SPECIFICATION FOR DETAIL)

spec ref	*	dr	w wcadmin	2006/08/30	projection	MM	size	A4	scale	1:1
tolerance std	TOLERANCES UNLESS OTHERWISE SPECIFIED	eng	Wei Yang	2014/08/27			←→	ecn no	ELX-DG-18450-1	
ASME Y14.5		chr	Terry Qiu	2014/09/17					rel level	Released
-		appr	Pei-Ming Zheng	2014/09/19		product family				
surface	✓	linear	0.X	±0.3		title	SMT TYPE ASS'Y	dwg no	10058835	rev
ASME Y14.5			0.XX	±0.20						
	angular	0°	±2°	www.fci.com						

PrdE File - REV C - 2009-06-09



Copyright FCI.



DETAIL A
SCALE 6:1

RECOMMENDED MODULE LAYOUT
(SEE PICMG ADVANCED MEZZANINE CRAD BASE SPECIFICATION FOR DETAIL)

SCALE 2:1

spec ref	*	dr	w wcadmin	2006/08/30	projection	MM	size	A4	scale	1:1	
tolerance std	TOLERANCES UNLESS OTHERWISE SPECIFIED	eng	Wei Yang	2014/08/27			←→	ecn no	ELX-DG-18450-1		
ASME Y14.5		chr	Terry Qiu	2014/09/17		product family		3G10	rel level	Released	
surface	✓	appr	Pei-Ming Zheng	2014/09/19	title		dwg no	10058835	rev	H	
ASME Y14.5		linear	0.X	±0.3		SMT TYPE ASS'Y					cat. no.
		0.XX	±0.20	www.fci.com			MICRO TCA				
	angular	0°	±2°								

ProE File - REV C - 2009-06-09

NOTES:

1. MATERIAL:

HOUSING: HIGH TEMPERATURE, GLASS FILLED UL94V-0 RATED.

TERMINAL: COPPER ALLOY

PLATING: 1.27um NICKEL UNDERPLATE ALL OVER

CONTACT AREA PLATING - SEE PRODUCT NUMBER CODE

SOLDER TAIL: MAT TIN - 2.54um MIN.

SEE PRODUCT NUMBER CODE

2. PRODUCT SPECIFICATION: GS-12-362

3. PACKING SPECIFICATION: GS-14-1047

4. RoHS COMPATIBLE PRODUCT SPECIFICATIONS

a-PLATING:

- "LF" MEANS THE PRODUCT IS LEAD-FREE, 2um MINIMUM MATTE TIN OVER 1.27um MINIMUM NICKEL UNDERPLATE.

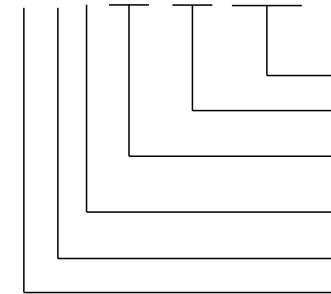
b-MANUFACTURING PROCESS COMPATIBILITY

- THE HOUSING WILL WITHSTAND EXPOSURE TO 260°C±5°C SOLDER BATH TEMPERATURE FOR 5 SECONDS IN A REFLOW SOLDER APPLICATION WITH A 1.6mm MIN THICK CIRCUIT BOARD.

△ 5. A △ SYMBOL WILL BE NEXT TO ANY DIMENSION, VIEW, OR NOTE WHICH HAS BEEN MODIFIED WITH THE CURRENT DRAWING REVISION.

6. MARKING INFORMATION:

P X X X X X X X X



PRODUCTION LINE CODE

DATE CODE THROUGH 01 TO 31

WEEK NUMBER 01 THROUGH 53

YEAR CODE:
MOST RIGHT OF DIGIT OF PRODUCTION.
(e.g 2007=7)

MANUFACTURE SITE; 2 FOR DONGGUAN

SOURCE, P FOR CHINA

HEIGHT OF THE MAKING TEXT: IMM MIN

PRODUCT NUMBER CODE
10058835 - X X X X L F

HOUSING COLOR OPTIONS

- 1-BLACK
- 2-WHITE

PEGS OPTIONS

- 0-PLASTIC PEGS

TERMINAL PLATING OPTIONS

- 0-0.76um Au CONTACT AREA

LEAD FREE

RESERVE

- 0-----WITHOUT MYLAR
- 1-----WITH MYLAR(35X8.0)
- 2-----WITH MYLAR(70X7.5)
- △ 3-----WITH MYLAR(22X7.0)

spec ref *		dr w cadmin		2006/08/30		projection		size A4		scale 1:1	
tolerance std		eng Wei Yang		2014/08/27						ecn no ELX-DG-18450-1	
ASME Y14.5		chr Terry Qiu		2014/09/17						rel level Released	
-		appr Pei-Ming Zheng		2014/09/19		product family 3G10					
surface ✓		linear				title SMT TYPE ASS'Y		dwg no 10058835		rev H	
		0.X ±0.3		www.fci.com		cat. no. *		Product - Customer Drw		sheet 6 of 6	
		0.XX ±0.20									
		0.XXX ±0.100									
ASME Y14.5		angular 0° ±2°									

Mouser Electronics

Authorized Distributor

Click to View Pricing, Inventory, Delivery & Lifecycle Information:

[FCI / Amphenol:](#)

[10058835-1000LF](#) [10058835-1001LF](#) [10058835-1002LF](#) [10058835-1003LF](#)