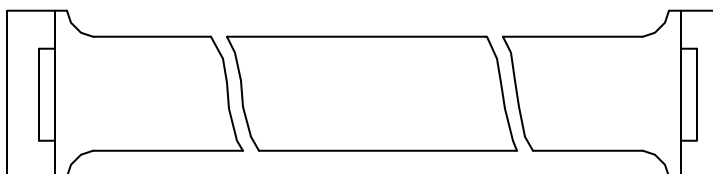
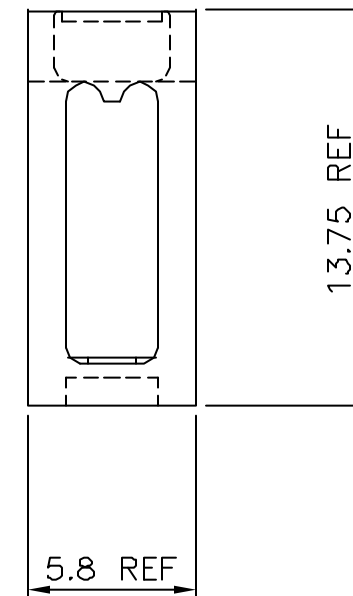
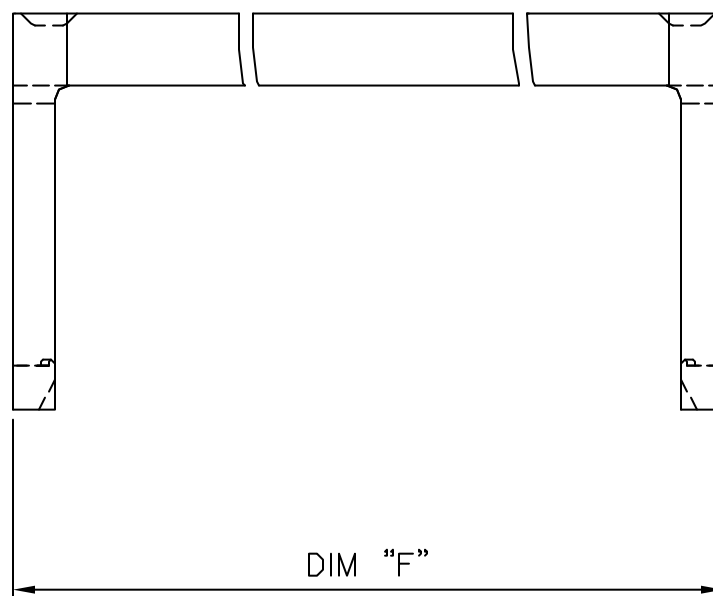
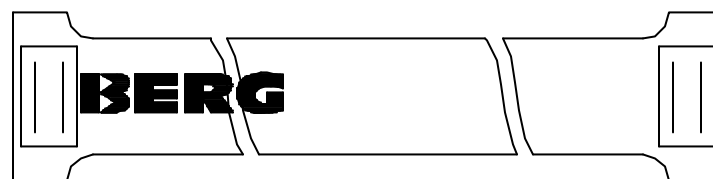


PRODUCT NUMBER
67045-0XXLF

INDICATES THE PRODUCT IS RoHS
COMPATIBLE, SEE NOTE 2

| STYLE | SIZE | DIM "F" |
|-------|------|---------|
| 06 | 2x 3 | 12.00 |
| 08 | 2x 4 | 14.54 |
| 10 | 2x 5 | 17.08 |
| 14 | 2x 7 | 22.16 |
| 16 | 2x 8 | 24.70 |
| 18 | 2x 9 | 27.24 |
| 20 | 2x10 | 29.78 |
| 26 | 2x13 | 37.40 |
| 30 | 2x15 | 42.48 |
| 34 | 2x17 | 47.56 |
| 40 | 2x20 | 55.18 |
| 44 | 2x22 | 60.26 |
| 50 | 2x25 | 67.88 |
| 60 | 2x30 | 80.58 |
| 64 | 2x32 | 85.66 |



NOTES:

1. MOLDING MATERIAL UNFILLED POLYESTER
FLAME RETARDANT PER UL-94-V0
COLOR GREY
2. RoHS COMPATIBLE PRODUCT
 - a - LABELLING:
 - MEETS PACKAGING SPECS AS PER GS-14-920
 - b - LEGAL STATEMENT: SEE GS-22-008
 - c - THE PRODUCT IS NOT INTENDED TO BE EXPOSED
TO MANUFACTURING SOLDER PROCESS
 - d - PRODUCT MEETS WITH EU 2002/EG/95

| | | | | | | | | | |
|-------------|----------|----------------|----------|---------------------------------------|-------------|------------|--|------------------|--|
| mat'l. code | | surface | | tolerance | | projection | | product family | |
| SEE NOTE 1 | | ISO 1302 ✓ | | ISO 406 ISO 1101 | | mm | | QKIE III | |
| ltr | ecn no | dr | date | tolerances unless otherwise specified | | mm | | title | |
| B | F80632 | PNZ | 98.10.16 | angles | .X ±0.3 | mm | | STRAIN RELIEF | |
| C | F05-0255 | LMU | 05.10.11 | Linear | .XX ±0.15 | mm | | LOW PROFILE | |
| D | F06-0270 | LMU | 06.09.12 | | .XXX ±0.05 | scale 1:4 | | dwg no | |
| E | F06-0274 | LMU | 06.10.18 | dr | LMULIN | 05.10.11 | | sheet 1 of 1 | |
| | | | | engr | J.COMPAGNON | 05.10.11 | | size | |
| | | | | chr | | | | 67045 | |
| | | | | appd | JM.C | 05.10.11 | | A3 | |
| sheet index | | revision sheet | | | | | | type | |
| | | | | | | | | CUSTOMER Drawing | |

Mouser Electronics

Authorized Distributor

Click to View Pricing, Inventory, Delivery & Lifecycle Information:

[FCI / Amphenol:](#)

[67045-006LF](#) [67045-010LF](#) [67045-014LF](#) [67045-026LF](#) [67045-008LF](#) [67045-016LF](#) [67045-018LF](#) [67045-020LF](#)
[67045-030LF](#) [67045-034LF](#) [67045-040LF](#) [67045-050LF](#)