

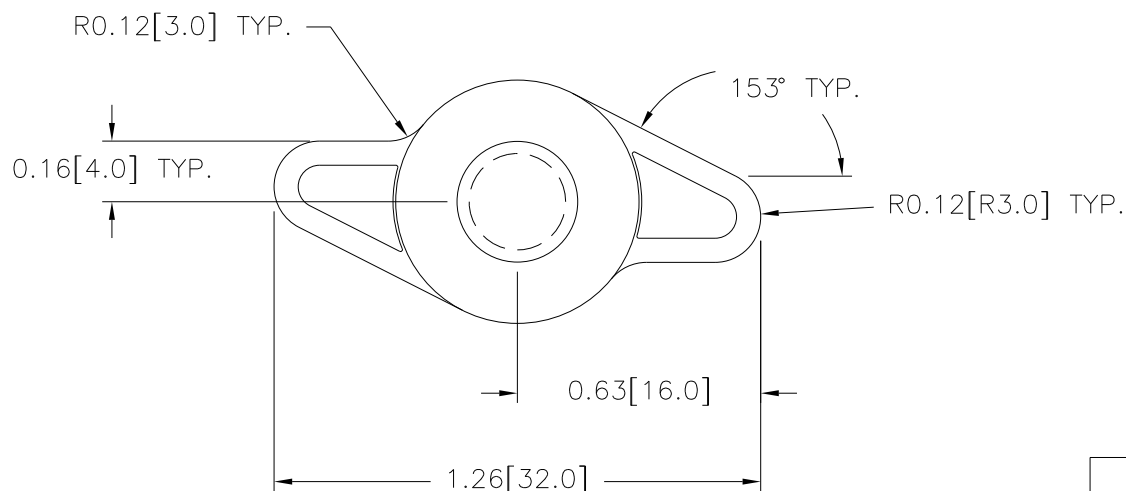
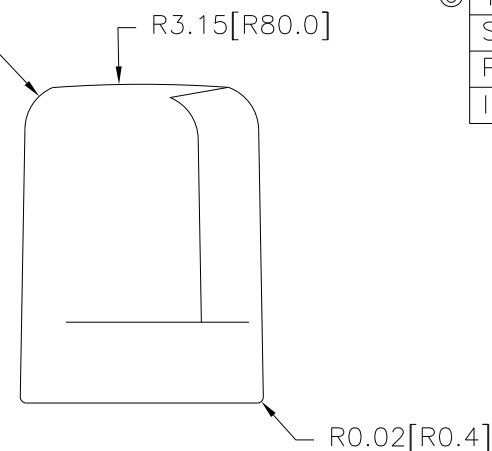
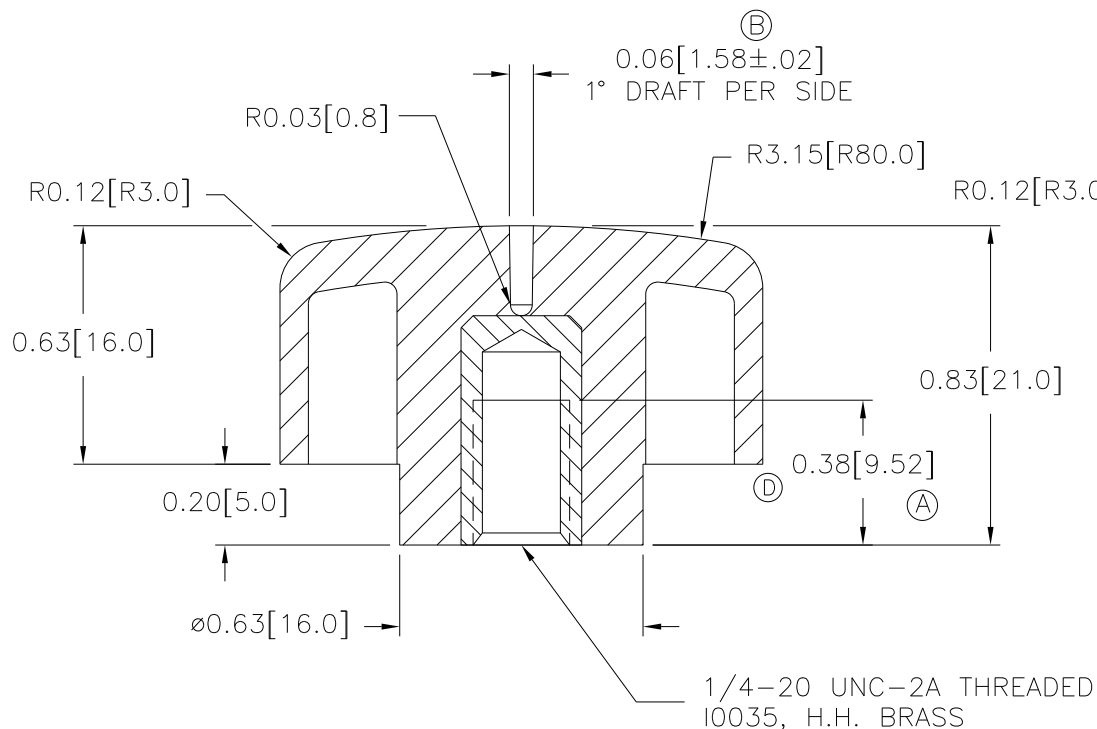
PART NAME: ADJUSTMENT KNOB SCALE: 2 : 1 DATE: 9/2/95 DR. BY RF

THIS DRAWING IS THE PROPERTY OF DAVIES MOLDING COMPANY, IS SUBMITTED SOLELY AS A DESIGN OR ENGINEERING PROJECT. WE ACCEPT NO RESPONSIBILITY WHATSOEVER FOR THE PRACTICAL APPLICATION OF THE PIECES MADE TO THIS DESIGN.

DAVIES MOLDING COMPANY  
CAROL STREAM, ILLINOIS 60188

P/N 3084

|         |              |
|---------|--------------|
| M NO.   | 3084         |
| CAVITY  | 3084         |
| CORE    | 3084         |
| TOP PIN | LONG (1.501) |
| SLEEVE  | 3084         |
| PIN     | 3084         |
| INSERT  | I0035        |



MATERIAL: HIPS (CLB) (E)  
COLOR: BLACK

NOTE(S) :

- (1) DRAFT PER SIDE 1° MAX. UNLESS OTHERWISE SPECIFIED.
- (2) DIMENSIONS SHOWN ARE MINUS DRAFT.
- (3) ALL EXTERNAL SURFACES TO BE RAWAL TEXTURE (MT-11010)
- (4) MOLDED PARTS MUST PASS IMPACT TEST PER S-B POWER TOOL COMPANY STD. C-5.6 IS
- (5) GATE AND EJECTOR PIN LOCATIONS MUST BE APPROVED BY S-B POWER TOOL CO. ENGINEERING DEPT. AND SHOWN ON DWG.
- (6) ALL RADII TO BLEND SMOOTH WITH ADJOINING SURFACES.

|   |                 |     |           |
|---|-----------------|-----|-----------|
| E | ADDED MAT. CODE | JAM | 6/25/12   |
| D | REMOVED RADIUS  | JAM | 10/15/09  |
| C | WAS 1.515       | TS  | 5/14/2001 |
| B | WAS 1.60        | TL  | 7/21/99   |
| A | WAS 6.35        | TL  | 7/21/99   |
| - | WAS SK3084-2    | TS  | 9/9/98    |

|   |                                  |
|---|----------------------------------|
| TOLERANCES:<br>UNLESS OTHERWISE SPECIFIED | DO NOT SCALE<br>DRAWING          |
| DECIMALS: X.XXX ± .005<br>X.XX ± .015     | MM: X.XX ± 0.15MM<br>X.X ± 0.4MM |
| FRACTIONS ± 1/64                          | ANG. ± 1°                        |

CHANGES

# Mouser Electronics

Authorized Distributor

Click to View Pricing, Inventory, Delivery & Lifecycle Information:

[Davies Molding:](#)

[3084](#)