



*Quality Products. Service Excellence.*

## EMI/RFI Shielded Extruded Aluminum Enclosures *1457-EMI Series*

EMI Gaskets, Heavy Duty, Optional Wall-Mounting Flanges



### Key Features:

- Heavy duty extruded enclosures designed to house P.C. boards or for equipment interfacing.
- Sized for standard Eurocards.
- P.C. boards mount horizontally by sliding into internal slots extruded into the enclosure body.
- Rugged body constructed from one piece, extruded aluminum with a minimum thickness of .06" (1.5 mm).
- Extruded aluminum body includes a recessed area for labels or membrane keypad.
- Diecast aluminum end panels are rugged - yet easy to machine. Front & rear gasket is a full perimeter conductive foam/fabric made of a Ni/Cu (nickel/copper) and CPSA (conductive pressure sensitive adhesive).
- Designed to meet IP 54 ratings.
- Choice of two versions - end panels without flange or with flange (for shelf or wall mounting).

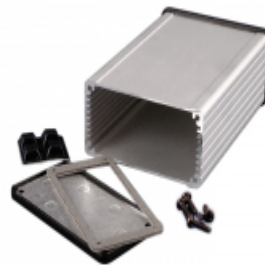


### Includes:

- Two diecast aluminum end panels - painted in a durable, black satin powder paint.
- Extruded, aluminum body (choice of either clear anodized or black powder paint finish).
- Two - end plate EMI/RFI conductive gaskets.
- All hardware and self-adhesive feet.
- NOTE: Recommended screw torque is 5 lbf/in



Available with black powder coat or clear anodize finish and with or without wall-



Enclosure includes extruded body, die-cast end panels, gaskets (not water-tight), and hardware. Extra end panel

mounting flanges.

kits are sold separately.



## Enclosures

EMI Shielded, No Flanges	EMI Shielded w/ Flanges	Extrusion Length	Width	Height
1457C801E	1457C802E	3.15	2.32	1.21
1457C801EBK	1457C802EBK	3.15	2.32	1.21
1457C1201E	1457C1202E	4.73	2.32	1.21
1457C1201EBK	1457C1202EBK	4.73	2.32	1.21
1457J1201E	1457J1202E	4.73	3.30	1.12
1457J1201EBK	1457J1202EBK	4.73	3.30	1.12
1457K1201E	1457K1202E	4.73	3.30	1.73
1457K1201EBK	1457K1202EBK	4.73	3.30	1.73
1457L1201E	1457L1202E	4.73	4.09	1.26
1457L1201EBK	1457L1202EBK	4.73	4.09	1.26
1457N1201E	1457N1202E	4.73	4.09	2.15
1457N1201EBK	1457N1202EBK	4.73	4.09	2.15
1457J1601E	1457J1602E	6.30	3.30	1.12
1457J1601EBK	1457J1602EBK	6.30	3.30	1.12
1457K1601E	1457K1602E	6.30	3.30	1.73
1457K1601EBK	1457K1602EBK	6.30	3.30	1.73
1457L1601E	1457L1602E	6.30	4.09	1.26
1457L1601EBK	1457L1602EBK	6.30	4.09	1.26
1457N1601E	1457N1602E	6.30	4.09	2.15
1457N1601EBK	1457N1602EBK	6.30	4.09	2.15
1457T1601E	1457T1602E	6.30	6.51	2.15
1457T1601EBK	1457T1602EBK	6.30	6.51	2.15
1457T2201E	1457T2202E	8.66	6.51	2.15
1457T2201EBK	1457T2202EBK	8.66	6.51	2.15

## Replacement End Panels

Enclosure Part Number	End Panel Kit (No Mounting Flanges)		End Panel Kit w/ Integrated Mounting Flanges	
	2-pack	10-pack	2-pack	10-pack
1457C	1457CEP	1457CEP-10	1457CEPF	1457CEPF-10
1457J	1457JEP	1457JEP-10	1457JEPF	1457JEPF-10
1457K	1457KEP	1457KEP-10	1457KEPF	1457KEPF-10
1457L	1457LEP	1457LEP-10	1457LEPF	1457LEPF-10
1457N	1457NEP	1457NEP-10	1457NEPF	1457NEPF-10
1457T	1457TEP	1457TEP-10	1457TEPF	1457TEPF-10

Data subject to change without notice



# Mouser Electronics

Authorized Distributor

Click to View Pricing, Inventory, Delivery & Lifecycle Information:

## Hammond:

[1457K1602E](#) [1457N1602E](#) [1457C802E](#) [1457N1202E](#) [1457N1202EBK](#) [1457N1602EBK](#) [1457C801EBK](#)  
[1457K1601E](#) [1457K1202E](#) [1457N1201E](#) [1457N1601E](#) [1457K1602EBK](#) [1457C801E](#) [1457N1201EBK](#) [1457K1201E](#)  
[1457C1201EBK](#) [1457K1601EBK](#) [1457C1202E](#) [1457C1201E](#) [1457K1202EBK](#) [1457N1601EBK](#) [1457K1201EBK](#)  
[1457C802EBK](#) [1457C1202EBK](#) [1457L1201EBK](#) [1457J1601EBK](#) [1457L1201E](#) [1457J1201EBK](#) [1457L1202EBK](#)  
[1457L1601E](#) [1457J1201E](#) [1457L1602E](#) [1457J1602EBK](#) [1457L1601EBK](#) [1457L1602EBK](#) [1457J1202E](#) [1457L1202E](#)  
[1457J1202EBK](#) [1457J1602E](#) [1457J1601E](#) [1457KEPF](#) [1457NEPF](#) [1457CEPF](#) [1457KEP-10](#) [1457NEPF-10](#)  
[1457KEPF-10](#) [1457CEP](#) [1457NEP](#) [1457CEP-10](#) [1457T1602E](#) [1457T1602EBK](#) [1457T2202E](#) [1457TEP-10](#)  
[1457T2201EBK](#) [1457T2202EBK](#) [1457TEP](#) [1457T1601EBK](#) [1457T2201E](#) [1457TEPF](#) [1457T1601E](#) [1457TEPF-10](#)  
[1457LEP](#) [1457KEP](#) [1457NEP-10](#)