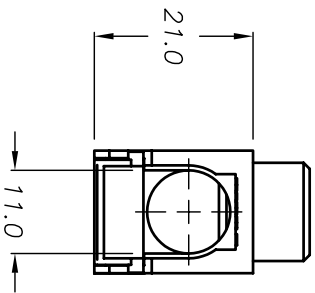
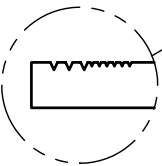
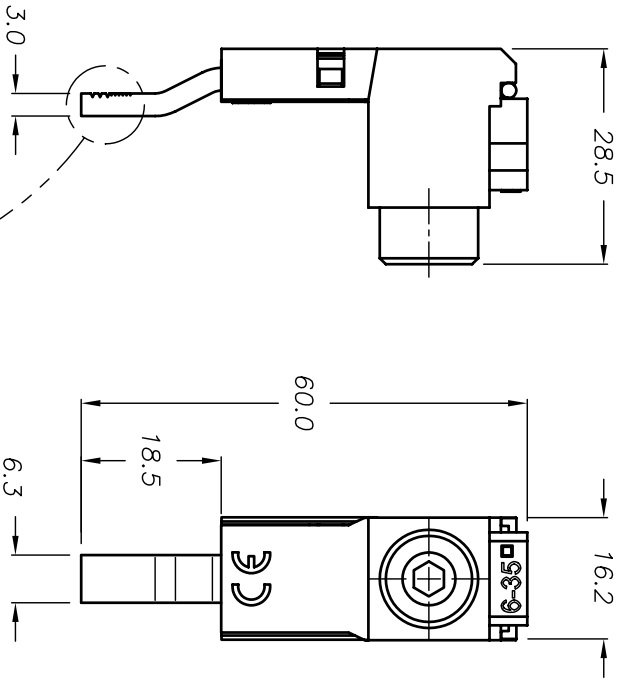
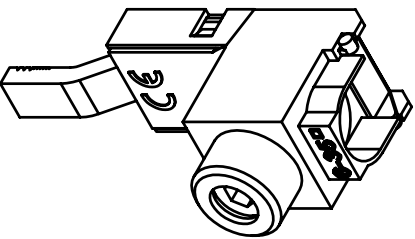
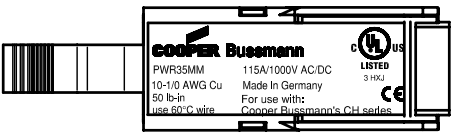


PART NO.		PLANT DISTRIBUTION CODE:	
PWR35MM			
REV #	REVISIONS	DATE	APPR.
--	INITIAL RELEASE ECN BU-SB11316	3-30 2011	
A	REVISED TITLE ECN BU-SB11501	5-3 2011	



CUSTOMER PRINT

TOLERANCES UNLESS OTHERWISE SPECIFIED			THIRD ANGLE PROJECTION		DESIGN UNITS	
METRIC	ENGLISH	FRACTIONAL TOL			METRIC (mm)	
1 PL DEC.=+0.25	2 PL DEC.=+0.01	ANGULAR TOL = +1°			CREATED USING	
2 PL DEC.=+0.13	3 PL DEC.=+0.005	ANGULAR TOL 1PL=+0.5°			AUTOCAD	

COPYRIGHT — Cooper Industries, Inc.

This is an unpublished work. The disclosure of this work is limited to a select personnel. Further dissemination or disclosure to the public is PROHIBITED. This unpublished work is protected by Federal Copyright Law and all rights thereunder are reserved by Cooper Industries, Inc.

CONFIDENTIAL —

The information contained in this document is the property of Cooper Industries, Inc. It is not for public disclosure. Possession of the information does not convey any right to loan, sell or disclose the information. Unauthorized reproduction or use of the information is PROHIBITED. This document is to be returned to Cooper Industries, Inc. upon completion of the purpose for which it is loaned or upon request.

MATERIAL

FINISH

USED ON		DRAWN BY	
		JG	
DATE		C/F NO.	
3-30-11		83525	
SCALE		1:1	

COOPER Bussmann

St. Louis, MO 63178

THREE PHASE FEEDER TERMINAL

PART NO.	SIZE:
PWR35MM	A

SHT 1 OF 1

Mouser Electronics

Authorized Distributor

Click to View Pricing, Inventory, Delivery & Lifecycle Information:

[Eaton:](#)

[CHCC1DU](#) [CHM1DU](#) [CHM2DU](#) [CHM3DU](#) [CHCC3DU](#) [CHCC3DIU](#) [BB1P100M6](#) [BB1P100M3](#) [CHM1DIU](#)
[CHM1DNU](#) [CHM3DNU](#) [CHM4DIU](#) [PWR1PLP](#) [PWR35MM](#) [CHPV2U](#) [CHPV2IU](#) [CHM1DI-48U](#) [CHPV1IU](#) [ECAP1P](#)