

NOTES:

REFERENCE STANDARD IEC60169-11 (4.1/9.5) IEC60169-16 (N)

NOTES:

REFERENCE STANDARD IEC60169-11 (4.1/9.5) IEC60169-16 (N)

NOTES:

REFERENCE STANDARD IEC60169-11 (4.1/9.5) IEC60169-16 (N)

NOTES:

REFERENCE STANDARD IEC60169-11 (4.1/9.5) IEC60169-16 (N)

NOTES:

REFERENCE STANDARD IEC60169-11 (4.1/9.5) IEC60169-16 (N)

NOTES:

REFERENCE STANDARD IEC60169-11 (4.1/9.5) IEC60169-16 (N)

NOTES:

REFERENCE STANDARD IEC60169-11 (4.1/9.5) IEC60169-16 (N)

NOTES:

REFERENCE STANDARD IEC60169-11 (4.1/9.5) IEC60169-16 (N)

NOTES:

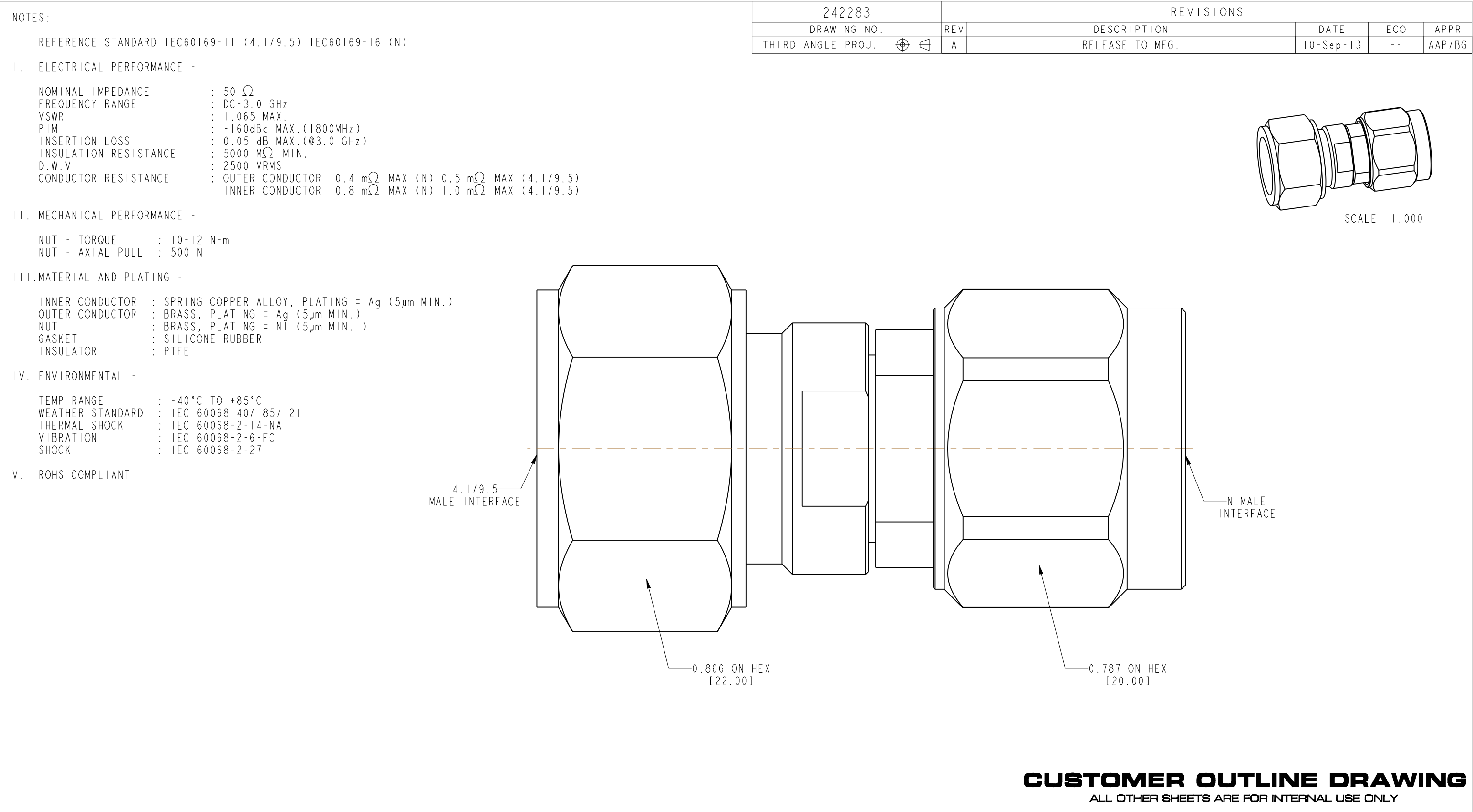
REFERENCE STANDARD IEC60169-11 (4.1/9.5) IEC60169-16 (N)

NOTES:

REFERENCE STANDARD IEC60169-11 (4.1/9.5) IEC60169-16 (N)

NOTES:

REFERENCE STANDARD IEC60169-11 (4.1/9.5) IEC60169-16 (N)



NOTES:		242283	REVISIONS			
	DRAWING NO.	REV	DESCRIPTION	DATE	ECO	APPR
	THIRD ANGLE PROJ. 	A	RELEASE TO MFG.	10-Sep-13	--	AAP/BG

REFERENCE STANDARD IEC60169-II (4.1/9.5) IEC60169-I6 (N)

I. ELECTRICAL PERFORMANCE -

NOMINAL IMPEDANCE : 50 Ω  
FREQUENCY RANGE : DC-3.0 GHz  
VSWR : 1.065 MAX.  
PIM : -160dBc MAX.(1800MHz)  
INSERTION LOSS : 0.05 dB MAX.(@3.0 GHz)  
INSULATION RESISTANCE : 5000 MΩ MIN.  
D.W.V : 2500 VRMS  
CONDUCTOR RESISTANCE :

OUTER CONDUCTOR    0.4 mΩ    MAX (N) 0.5 mΩ    MAX (4.1/9.5)  
INNER CONDUCTOR     0.8 mΩ    MAX (N) 1.0 mΩ    MAX (4.1/9.5)

II. MECHANICAL PERFORMANCE -

NUT - TORQUE : 10-12 N-m  
NUT - AXIAL PULL : 500 N

III.MATERIAL AND PLATING -

INNER CONDUCTOR : SPRING COPPER ALLOY, PLATING = Ag (5µm MIN.)  
OUTER CONDUCTOR : BRASS, PLATING = Ag (5µm MIN.)  
NUT : BRASS, PLATING = NI (5µm MIN. )  
GASKET : SILICONE RUBBER  
INSULATOR : PTFE

IV. ENVIRONMENTAL -

TEMP RANGE : -40°C TO +85°C  
WEATHER STANDARD : IEC 60068 40/ 85/ 2I  
THERMAL SHOCK : IEC 60068-2-14-NA  
VIBRATION : IEC 60068-2-6-FC  
SHOCK : IEC 60068-2-27

V. ROHS COMPLIANT

SCALE 1.000

The diagram shows two side views of the connector assembly. The left side view has callouts pointing to the outer hexagonal part labeled "4.1/9.5 MALE INTERFACE", the central body labeled "0.866 ON HEX [22.00]", and the right flange labeled "0.787 ON HEX [20.00]". The right side view has a similar callout for its outer hexagonal part labeled "N MALE INTERFACE". A dashed horizontal centerline runs through both views.

CUSTOMER OUTLINE DRAWING  
ALL OTHER SHEETS ARE FOR INTERNAL USE ONLY

[illegible]

# Mouser Electronics

Authorized Distributor

Click to View Pricing, Inventory, Delivery & Lifecycle Information:

[Amphenol:](#)

[242283](#)