

4

3

2

1

THIS DRAWING IS UNPUBLISHED.

RELEASED FOR PUBLICATION

© COPYRIGHT

ALL RIGHTS RESERVED.

LOC

DIST


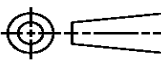
REVISIONS


P	LTR	DESCRIPTION	DATE	DWN	APVD
	B1	ECR-14-002788	25FEB2014	GK	HMR

REPLACED BY OCEAN STYLE APPLICATOR PART  
NUMBER 2151080-1

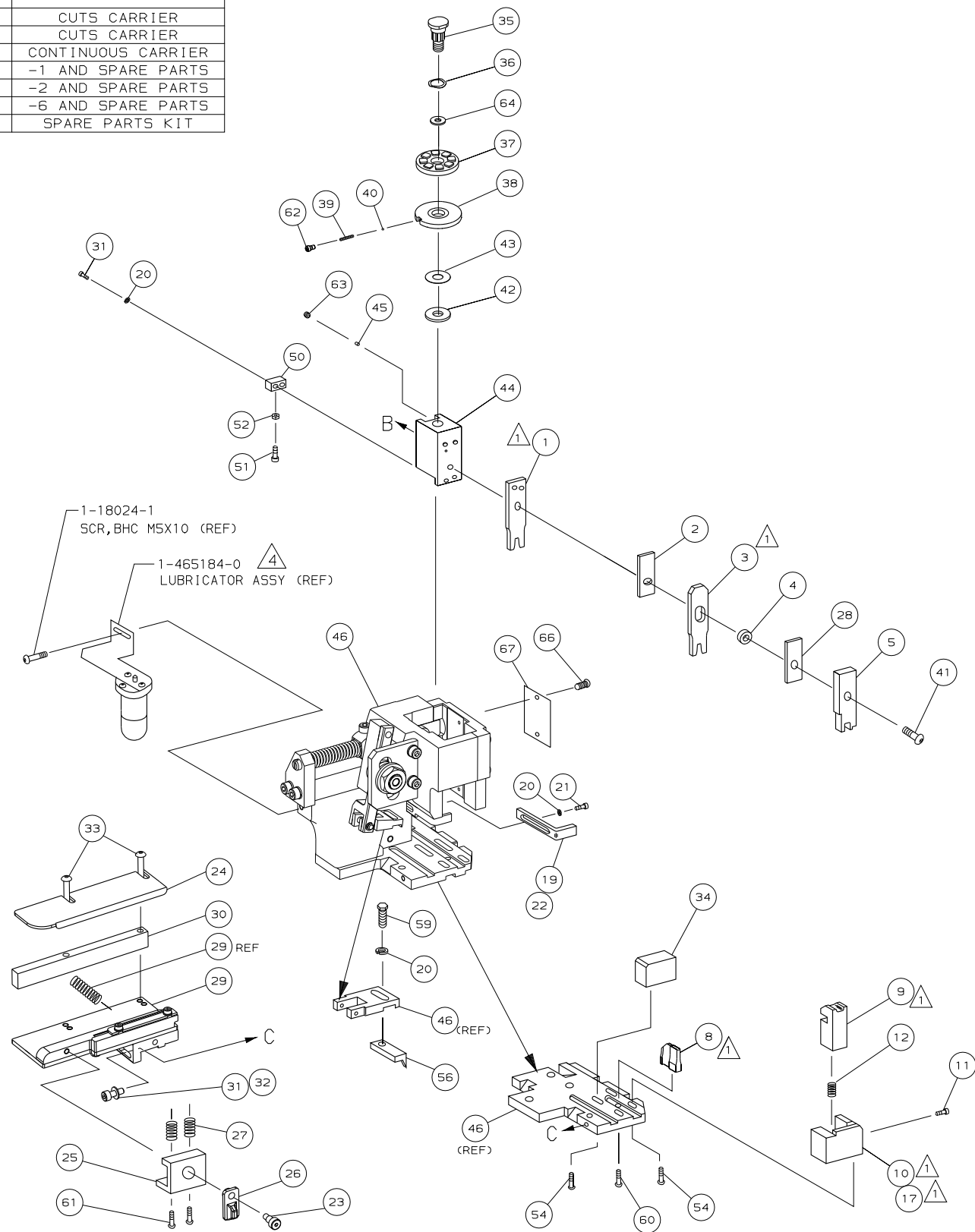
FOR REPLACEMENT PARTS FOR APPLICATOR 1426371  
REFER TO ADDITIONAL PAGE(S). SPARE PARTS KIT (IF LISTED)  
WILL REMAIN AVAILABLE.


THE REPLACEMENT OCEAN STYLE APPLICATOR HAS THE  
SAME TERMINATOR/PRESS INTERFACE AS APPLICATOR  
1426371

THIS DRAWING IS A CONTROLLED DOCUMENT.		DWN GOPALAKRISHNA HV		 TE Connectivity			
DIMENSIONS:		CHK RAGHAVENDRA					
		APVD RAGHAVENDRA		NAME SIDE FEED HD-I APPLICATOR			
		PRODUCT SPEC					
		APPLICATION SPEC					
MATERIAL		WEIGHT		SIZE A3	CAGE CODE	DRAWING NO C- 1426371	RESTRICTED TO
FINISH		CUSTOMER DRAWING		SCALE		SHEET 1 OF 2	REV B1



- 1. RECOMMENDED SPARE PARTS.
- 2. GREASE RAM, CAM, CAM FOLLOWER AND FEED ROD LIGHTLY.
- 3. LUBRICATE DAILY PER THE APPLICATOR INSTRUCTION SHEET SUPPLIED WITH THE APPLICATOR.
- 4. CERTAIN TERMINALS REQUIRE LUBRICATION. REFER TO THE APPLICATOR INSTRUCTION SHEET FOR MORE INFORMATION.



QTY REQD PER ASSY		PARTS LIST			
DIMENSIONS: mm [INCHES]	MATL	HT TR	FIN		
DO NOT SCALE PRINT.	-	-	-		-
TOLERANCES UNLESS OTHERWISE SPECIFIED:	DR 15AUG02	APP 15AUG02	 <b>AMP</b> Incorporated Harrisburg, PA 17105-3608		
1 P/LC DEC ± .	L.L.OFTHOUSE	F.BACKHURST			
2 P/LC DEC ± .	CHK -	REL 100CT02			
3 P/LC DEC ± .		L.L.OFTHOUSE			
ANGLES ± .	NAME SIDE FEED HD-I APPLICATOR				MACHINE REF
SURF TEXTURE: ✓					HD-I APPL
REMOVE BURRS, BREAK SHARP EDGES RO.38 MAX	SCALE -	D DWG NO	1426371		SHEET 1 OF 1
CAGE CODE 00779	CUSTOMER AND ASSEMBLY DRAWING				REV B
					RESTRICTED TO -

# Mouser Electronics

Authorized Distributor

Click to View Pricing, Inventory, Delivery & Lifecycle Information:

[TE Connectivity:](#)

[1426371-2](#)