

Model

Switch Mode Power Supply

PAS250

250 Watts_{max} output power

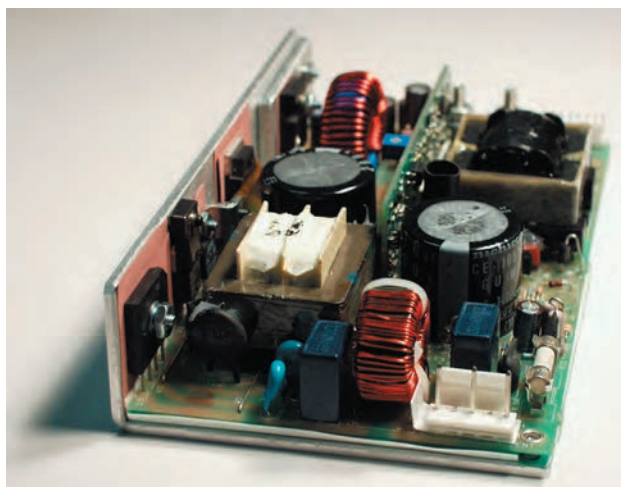
Power Factor Correction

Single Output

H.A.L.T. Highly Accelerated Life Testing
TESTED

Electrical Specifications

Input Voltage:	85-132/180-264 VAC, 47-63 Hz, 1 phase
Input Current:	<6A RMS @ 115 VAC @ full load <3A RMS @ 230 VAC @ full load
Inrush Current:	<35A, pk @ 265 VAC @ cold start <75A, pk @ 132 VAC @ cold start
Harmonic Distortion:	Meets EN61000-3-2 for Class A
EMI Filtering:	Meets CISPR 11 and 22 and FCC Part 15 Class B (conducted)
Input Protection:	Internal AC line fuse; 250 VAC, 8A
Output Power:	250W with 25CFM air; 130W Convection
Line Regulation:	± 0.3%
Load Regulation:	± 0.5%
PARD:	<1% or 50mV; 20MHz bandwidth
Hold-up Time:	16 ms @ full load (120 VAC)
Output Polarity:	Output is floating
Minimum Load:	0% of rated load
Transient Response:	3% for 25% load change @ 1A/μs; 50% duty cycle 50/60 Hz
Output Rise Time:	<100 ms (10% to 90%)
Current Limit:	105-130% of rated current; Hiccup
Remote Sense:	Compensates for up to 250mV of total cable drop
Remote On/Off:	Optional



Thermal Shutdown:	Standard
DC OK:	Standard; Open Collector
Turn-on Delay:	<1 second after application of AC Input
Stability:	<0.1% for 8 hours after 1/2-hour warm up
Isolation:	>20 MΩ @ 100 VDC between output terminals and chassis ground
AC Power Fail:	TTL _{LOW} logic "0" at least 2 ms before output drops 5%; Open Collector
Overvoltage Protect:	Factory set, 125% ±5%, cycle AC to reset
Reverse Voltage:	Output has reverse voltage protection; Reverse current limited to 100% of output rating
Efficiency:	Up to 85%
MTBF:	MIL-STD-HDBK 217E >200,000 hours @ 25°C Highly Accelerated Life Testing

Available Voltage Outputs*

Voltage Codes	Voltages (Volts)	Continuous Current (Amps)
-4	12.0	21
-5	15.0	17
-6	24.0	10.5
-7	28.0	9.0
-8	36.0	7.2
-9	48.0	5.5

* Consult factory for other voltages and OEM quantities.

Note: Standard models are shown **bold**

PART # STRUCTURE:

MODEL - **VOLTAGE CODE** - **OPTION CODES** (See back)
PAS250 - **X** - **ABC....**

Example: Part Number **PAS250-7-GS**= 250W Power Factor Corrected, 28V @ 9A with Field Configurable Options (Droop Share, Single Wire Share and Square Current Limit) and Remote On/Off Invert.
 See 3rd page for PAS250 CODE TABLE AND AVAILABLE OPTIONS.

Model

PAS250

Options

12V@0.5A Aux./Fan Drive (A)	Droop Current Share ±10% (B)
Fan Assembly (C)	DC OK Invert (E)
PF Invert (F)	Field-Configurable (G)
Single Wire Current Share ±5% (I)	Square Current Limit (J)
Molex Connector (K)	Metric Mounting (M)
OR-ing Diode (O)	Remote On/Off (R)
Remote On/Off Invert (S)	

Safety Compliance

IEC / EN / UL / CSA 60950-1
 CE Declaration to Low Voltage Directive 2006/95/EC and
 RoHS Directive 2011/65/EU



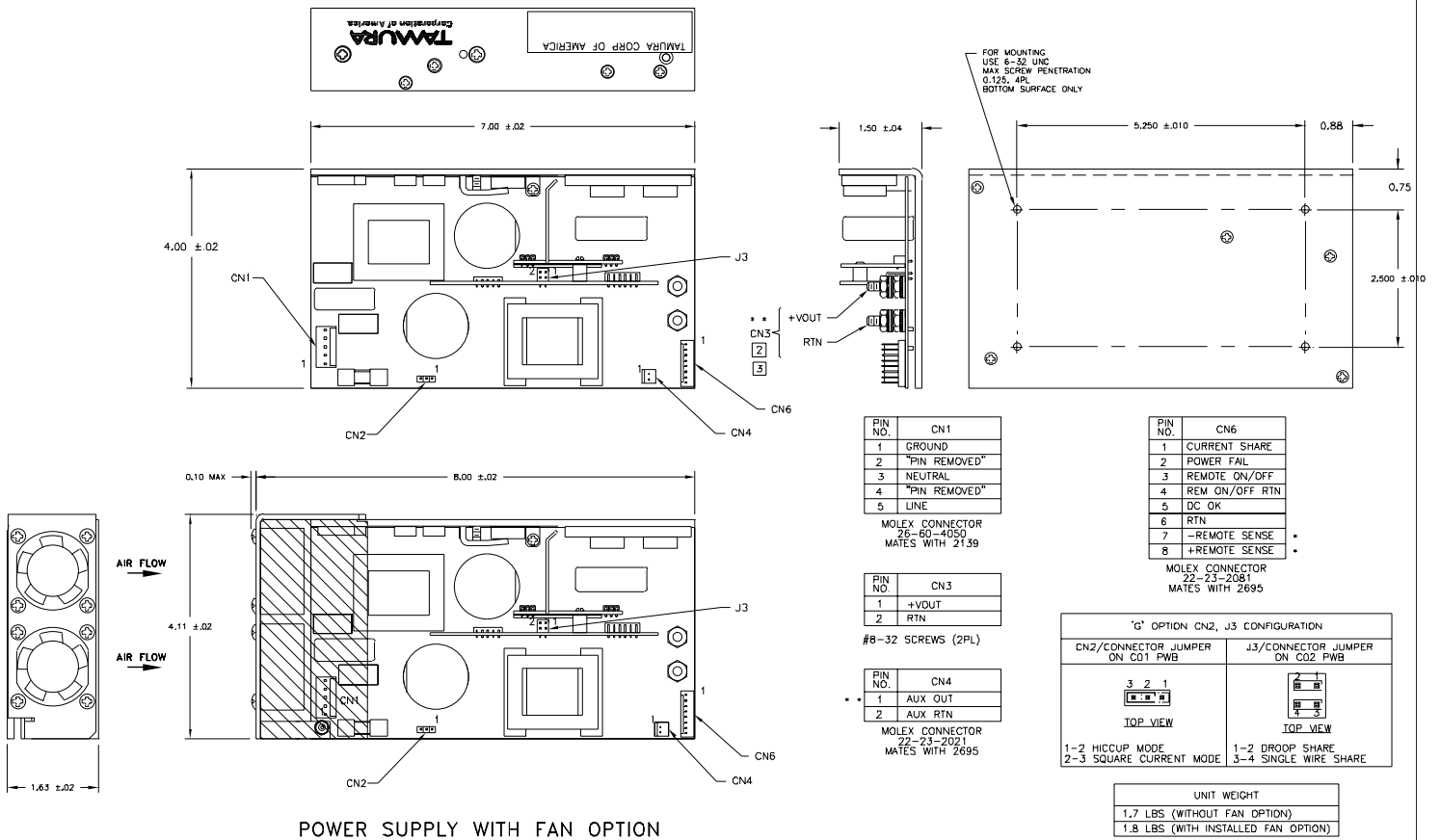
Surge & ESD Test Levels

N61000-4-5 Level 3	EN61000-4-2 Level 2
EN61000-3-2 for Class A	EN61000-4-2 Level 3 (Air Only)
EN61000-4-4 Level 3	EN61000-4-11

Meets Class B conducted limits per CISPR 11/22 and 47 CFR 15 subpt B

Physical Specifications

Dimensions: (HxWxL)	1.5" x 4.0" x 7"
Operating Temp:	0 to 70°C; rated power to 50°C derate linearly to 50% at 70°C.
Relative Humidity:	5% to 90%, non-condensing
Storage:	-50 to 85°C/20-90% RH
Altitude:	6561 40,000' storage



POWER SUPPLY WITH FAN OPTION

③ OPTIONAL—MOLEX CONNECTOR (OPTION 'K'—LIMITED TO 7A) MAY BE SPECIFIED FOR CN3 INSTEAD OF STANDARD OUTPUT STUDS.
 ② DO NOT EXCEED 17 INCH-LBS (MAX TORQUE) WHEN TIGHTENING TOP NUTS ON OUTPUT STUDS.
 1. FOR CLARITY NOT ALL ITEMS ARE SHOWN IN EACH VIEW.

* **WARNING:** DAMAGE WILL OCCUR IF REMOTE SENSE LEADS (CN6-7 & CN6-8) ARE REVERSED OR USED WITH LOAD DISCONNECTED FROM OUTPUT (CN3).
 * **NOTE:** FOR PROPER REGULATION OF AUXILIARY OUTPUT, APPLY AT LEAST 10% OF RATED LOAD TO VOUT.



PAS250 Power Supply Series

Standard Models
PAS250-X-Y₁ ... Y_n

Tailored Models
PAS250-60ZZZ

Custom Models
PAS250-61ZZZ

	Voltage and Current Ratings		Standard Options
X Codes	Volts	Amps	Y Code Descriptions
1	Not Available		A 12Vdc, 0.5A Auxiliary Output** B Droop Share* C Fan Assembly**
2	Not Available		E DCOK Invert F PF Invert
3	Not Available		G Field configurable options – B, I, and J I Single Wire Share*
4	12.0	21.0	J Square Current Limit K Molex Connector, 7A max. (#8 stud standard)
5	15.0	17.0	M Metric Mounting O ORing Diode
6	24.0	10.5	R Remote On/Off (closed is OFF) S Remote On/Off Invert (open is OFF)
7	28.0	9.0	*Includes Option J **Options A and C are not available together
8	36.0	7.2	
9	48.0	5.5	
			Tailored Units (no safety changes)
			60ZZZ, where ZZZ = Factory Assigned Number Harnesses Added, Special test data, Etc.
			Custom Units (safety critical changes)
			61ZZZ, where ZZZ = Factory Assigned Number

Mouser Electronics

Authorized Distributor

Click to View Pricing, Inventory, Delivery & Lifecycle Information:

[Tamura:](#)

[PAS250-6AG](#) [PAS250-9AG](#) [PAS250-4AG](#) [PAS250-4](#)