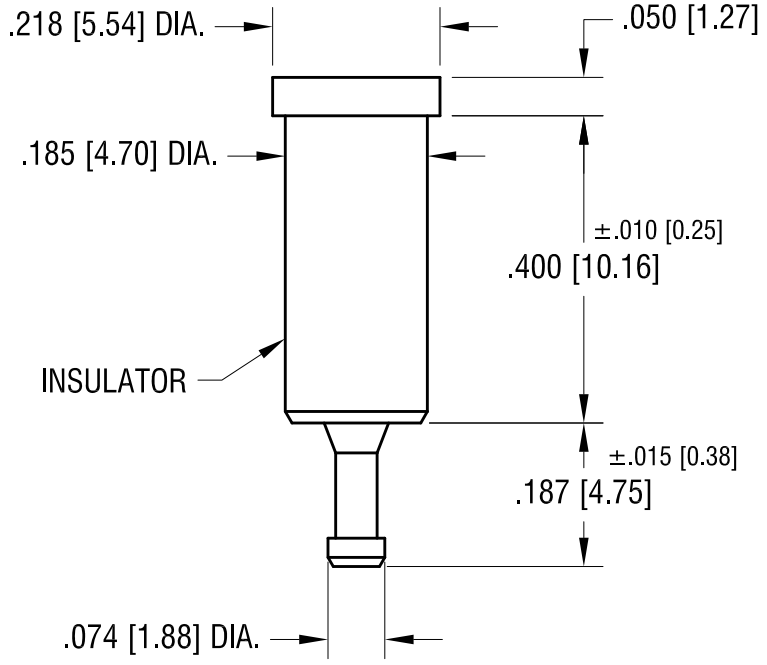
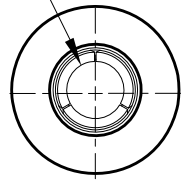


THIS DOCUMENT IS THE PROPERTY OF
KEYSTONE ELECTRONICS CORP. AND
SHALL NOT BE REPRODUCED, DISTRIBUTED
OR USED AS A BASIS FOR MANUFACTURE
WITHOUT PRIOR WRITTEN PERMISSION
FROM KEYSTONE ELECTRONICS CORP.

ACTUAL SIZE



SPRING CONTACT TO
ACCEPT .080[2.03]
PIN DIA.



PART NO.	COLOR
11009	WHITE
11009-R	RED
11009-B	BLACK

NOTES:

- 1.PIN-BODY : MAT'L -BRASS
2. JACK-CONTACT: MAT'L- .010 [0.25] BERYLLIUM COPPER
3. BUSHING: MAT'L - PTFE (SEE COLOR CHART)

KEYSTONE ELECTRONICS CORP.			
www.keyelco.com • ASTORIA, N.Y. 11105-2017 • Tel (718) 956-8900			
PART NAME		PTFE INSULATED TEST JACK	
MATERIAL		AS NOTED	
FINISH	GOLD PLATE	DRN BY	N.T.
		DATE	7.10.07
		APP'D	LN
		SCALE	4X
TOLERANCES	INCH [MM]	CODE	DWG NO.
DECIMAL	± .005 [± 0.13]	C	11009-
ANGULAR	± 1°		
UNLESS OTHERWISE SPECIFIED			

DATE	DESCRIPTION	REV.
3.29.17	CHANGE AS PER ECN 17-027	B
11.17.08	CHANGE AS PER ECN 08-177	A

Mouser Electronics

Authorized Distributor

Click to View Pricing, Inventory, Delivery & Lifecycle Information:

[Keystone Electronics:](#)

[11009-B](#)