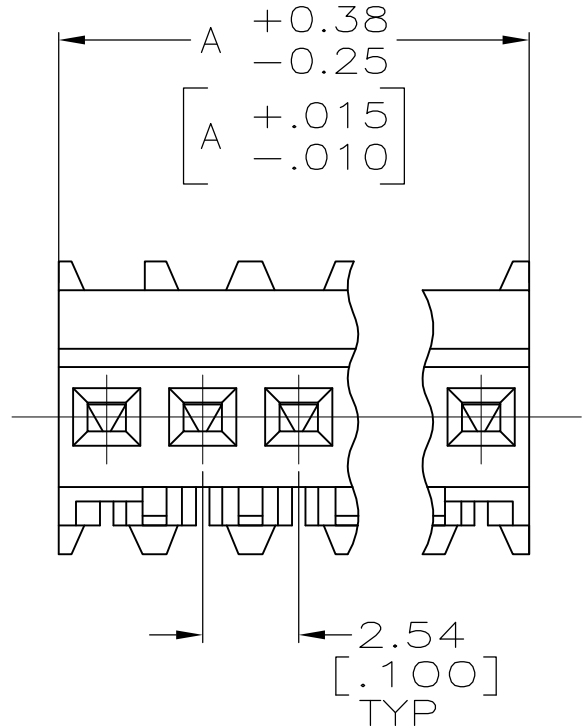
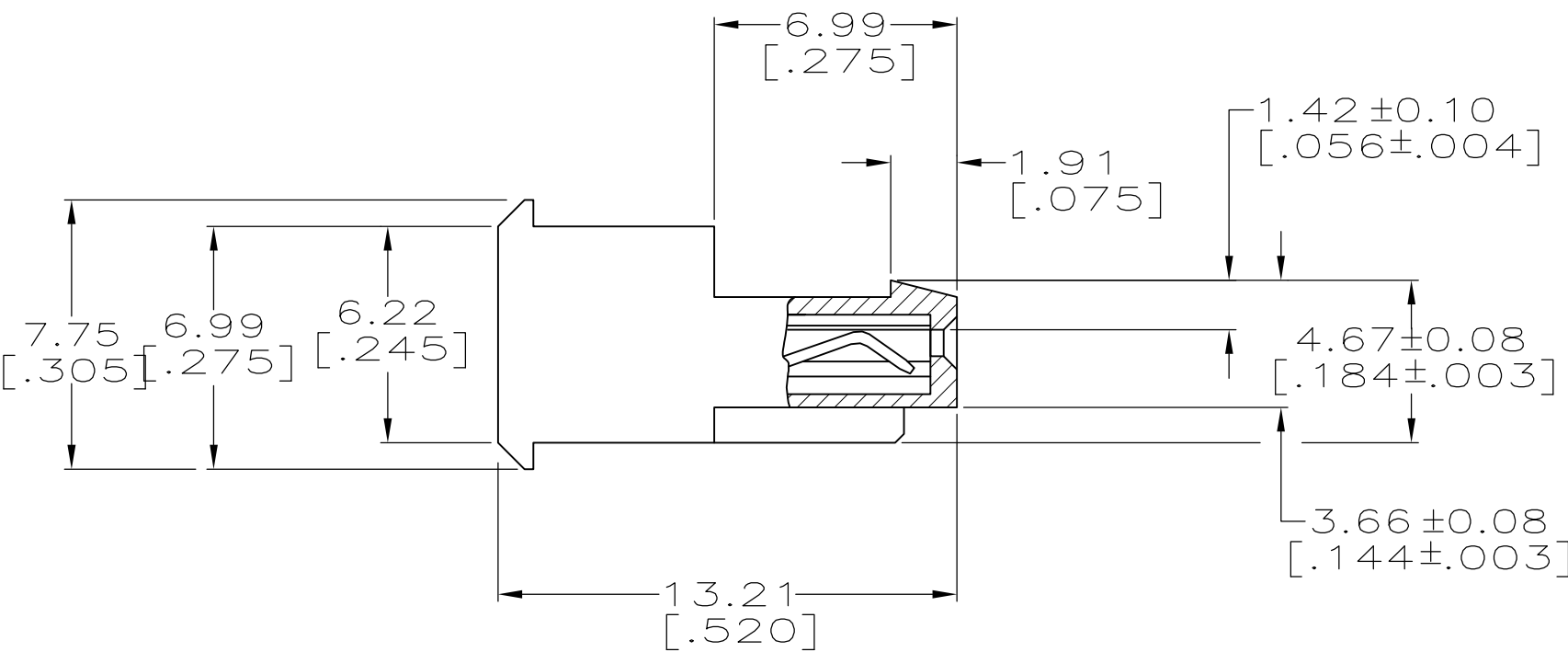
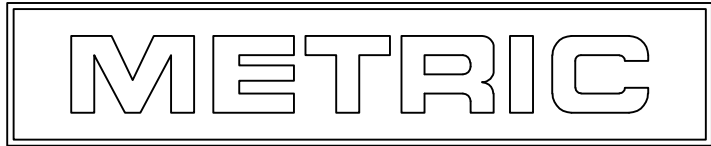



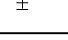


LOC	DIST	REVISIONS					
CM	00	P	LTR	DESCRIPTION	DATE	DWN	APVD
			V2	REVISED PER ECO-11-004587	11MAR11	RK	HMR



- 1 MATERIAL: CONNECTOR - NYLON UL94V-2 (WHITE).
CONTACTS - 0.30[.012] THICK COPPER ALLOY
BRIGHT TIN-LEAD .00203[.000080] MIN THICKNESS
FOR 640621-2 THRU 2-640621-8.
MATTE WHISKER MITIGATED TIN .00203[.000080] MIN THICKNESS
OVER NICKEL UNDERPLATE FOR 3-640621-2 THRU 5-640621-8.
2. CONTACTS ACCEPT 24 AWG WIRE WITH 1.52[.060] MAX
INSULATION DIAMETER.
3. CONTACTS MUST ACCEPT 0.64±0.03[.025]
POST AND REMAIN LOCKED IN POSITION.
- 4 IDENTIFICATION NUMBER FOR LAST CIRCUIT MAY
NOT APPEAR ON ALL ASSEMBLIES.
5. DIMENSIONS IN BRACKETS ARE IN INCHES.
6. HOUSING FEATURES ARE: FEED THRU WITH LOCKING
RAMP.
- 7 OBSOLETE PARTS: OBSOLETE CIS STREAMLINING PER D.RENAUD/D.SINISI



THIS DRAWING IS A CONTROLLED DOCUMENT.		DWN S. CARPENTER 11JUN2003 CHK D. BOSSI 11JUN2003		 TE Connectivity			
DIMENSIONS: mm [INCHES]		TOLERANCES UNLESS OTHERWISE SPECIFIED: 0 PLC ± 1 PLC ± 2 PLC ± 3 PLC ± 0.13 [0.005] 4 PLC ± ANGLES ±					
		APVD D. BOSSI 11JUN2003 PRODUCT SPEC 108-1050 APPLICATION SPEC 114-1019		NAME MTA-100 CONNECTOR ASSEMBLY, 24 AWG, STANDARD			
MATERIAL 		WEIGHT					
FINISH 		CUSTOMER DRAWING		SIZE A2	GAGE CODE 00779	DRAWING NO C-640621	RESTRICTED TO —
				SCALE 5:1	SHEET 1 of 1	REV V2	

Mouser Electronics

Authorized Distributor

Click to View Pricing, Inventory, Delivery & Lifecycle Information:

[TE Connectivity:](#)

[2-640621-0](#)