

# MICRO SWITCH

A DIVISION OF HONEYWELL INTERNATIONAL COMPANY  
HONEYWELL BUILDING  
MORRISTOWN, NEW JERSEY 07960

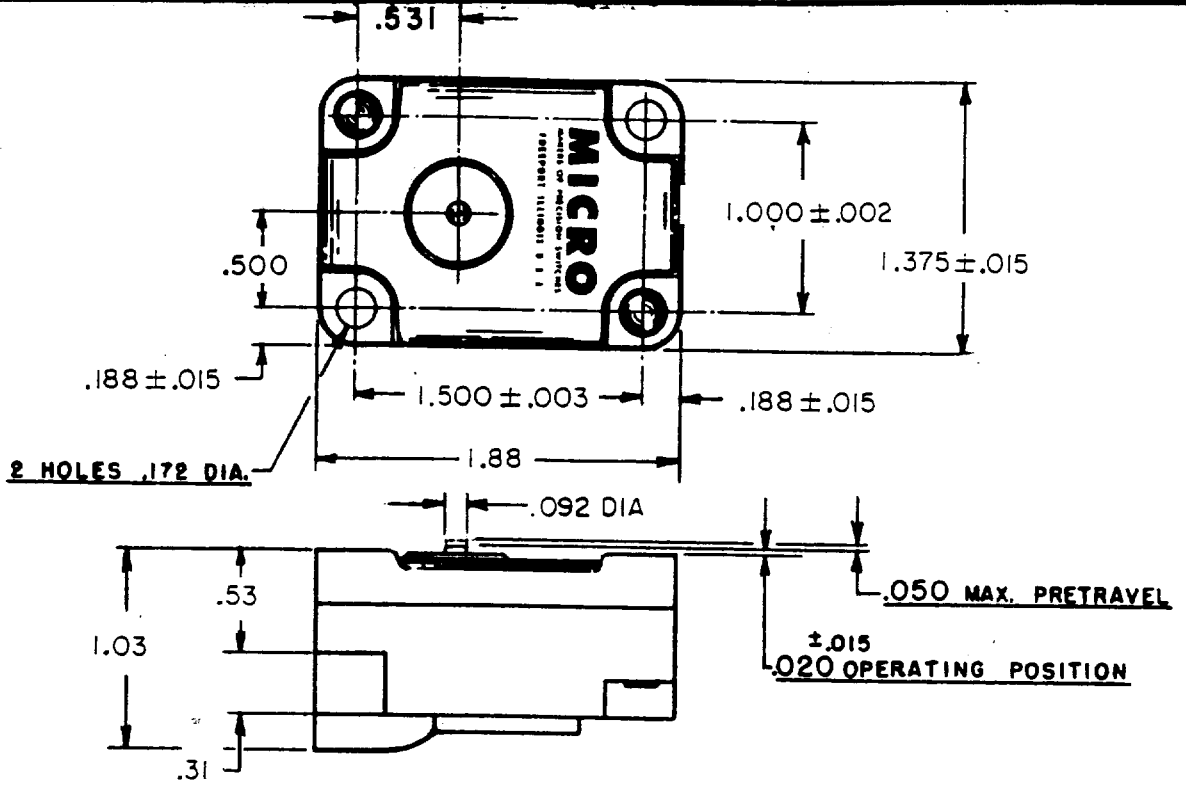
FED. MFR. CODE 91829

## SWITCH - BASIC

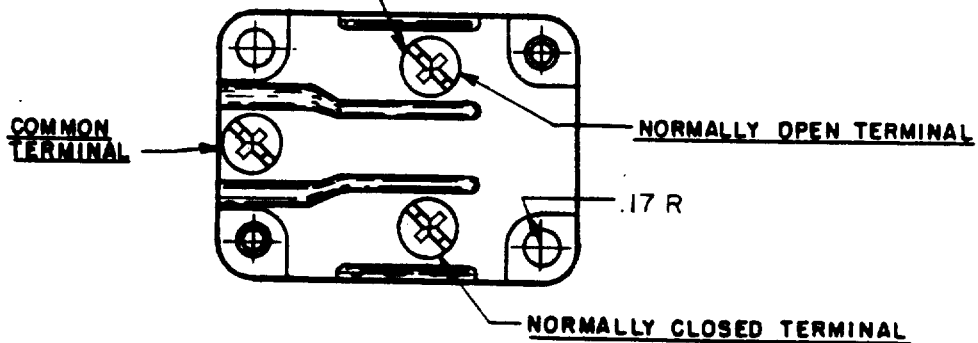
CATALOG LISTING

1MK1

THIS DRAWING COVERS A PROPRIETARY ITEM AND IS THE PROPERTY OF MICRO SWITCH. A DIVISION OF HONEYWELL. THIS DRAWING IS NOT TO BE COPIED OR USED WITHOUT THE APPROVAL OF MICRO SWITCH.



3X 8-32 UNC (.219) BINDING  
HEAD COMBINATION TERMINAL  
SCREW



**NOTE**

— ONLY NO. 8 ROUND HEAD SCREWS AND SAE LIGHT SPRING WASHER SHOULD BE USED FOR MOUNTING SWITCH IN ORDER TO PROVIDE PROPER ELECTRICAL CLEARANCES.

**CHARACTERISTICS**

OPERATING FORCE ----- 14-22 OZ.  
RELEASE FORCE ----- 10 OZ. MIN.  
DIFFERENTIAL TRAVEL ----- .002-.0075  
OVERTRAVEL ----- .010 MIN.

**ELECTRICAL DATA**

CONTACT ARRANGEMENT  
S. P. D. T.

**SCALE FULL**

DO NOT SCALE PRINT  
UNLESS OTHERWISE SPECIFIED:  
DIMENSIONS ARE IN INCHES  
TOLERANCES ARE  
FRACTIONS  $\pm$  1/64  
DECIMALS  $\pm$  .010  
ANGLES  $\pm$   
WEIGHT

DRAWN: R. G. C. 30, JULY 54  
 CHECKED: J. S. PEG. 65  
 APPROVED: L. W. B. 14  
 CASE: 14-719-26  
 RELEASE NO. 30, JULY '94  
 REPLACES: 1MK1  
 ISSUE: X2  
 DRAWING NUMBER: M  
 REVISIONS:

# Mouser Electronics

Authorized Distributor

Click to View Pricing, Inventory, Delivery & Lifecycle Information:

[Honeywell:](#)

[1MK1](#)