

PRODUCT NUMBER  
73304-XXXLF

PLATING OPTION  
1= GXT 0.76  $\mu\text{m}$   
3= GOLD 0.76  $\mu\text{m}$   
5= GOLD 1.27  $\mu\text{m}$

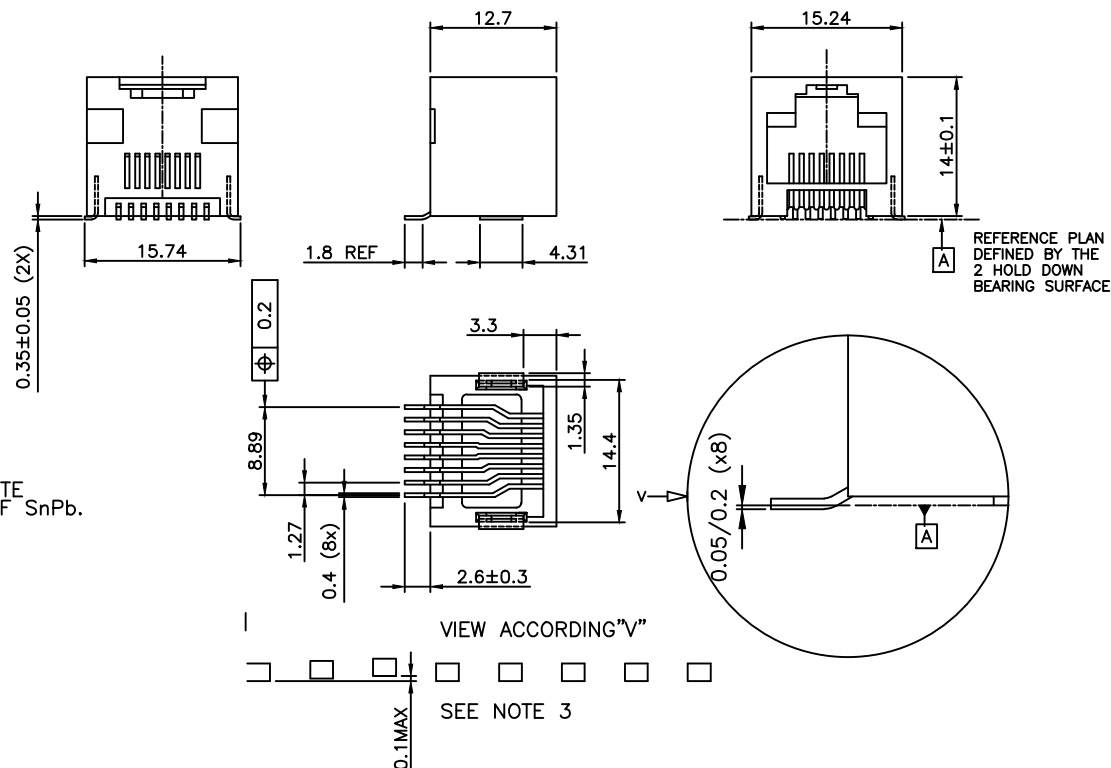
PACKAGE OPTION  
1= TAPE ON REEL  
2= TUBE  
3= TAPE ON REEL  
IN PLASTIC BAG

TERMINAL LOADING  
1= FULLY LOADED  
2= POS 1,2,7,8  
3= POS 3,4,5,6

WHEN NEEDED, SUFFIX LETTER "LF"  
INDICATES THE PRODUCT IS RoHS  
COMPATIBLE, SEE NOTE 4.

NOTES:

- 1- MATERIAL: HOUSING: HIGH TEMP. PCT, COLOUR BLACK.  
TERMINAL: PHOSPHOR BRONZE.
- 2 - PLATING: CONTACT AREA: SEE TABLE.  
SOLDER TAIL : 90/10 SnPb 2 $\mu\text{m}$  MIN.  
WHEN SUFFIX "LF" IS REQUIRED, 2 $\mu\text{m}$  MIN MATTE  
TIN OVER 1.27 MIN Ni IS SUPPLIED INSTEAD OF SnPb.  
NO RAW EDGES EXEPT SOLDER TAIL TIPS
- 3 - SOLDER TAILS COPLANARITY : 0.1 mm
- 4 - RoHS COMPATIBLE PRODUCT SPECIFICATIONS
  - a - PLATING:
    - "LF" MEANS THE PRODUCT IS LEAD-FREE,  
2 $\mu\text{m}$  MINIMUM MATTE TIN OVER 1.27 $\mu\text{m}$   
MINIMUM NICKEL UNDERPLATE.
  - b - MANUFACTURING PROCESS COMPATIBILITY
    - THE HOUSING WILL WITHSTAND EXPOSURE TO  
245°C PEAK TEMPERATURE FOR 30 SECONDS  
MAX IN A CONVECTION, INFRA-RED OR VAPOR  
PHASE OR REFLOW OVEN.
  - c - LABELING:
    - MEETS PACKAGING SPECS AS PER GS-14-920
  - d - LEGAL STATEMENT: SEE GS-47-0004
- 5 - PACKAGING FOR OPTION 3 : EACH REEL IS WRAPPED INTO A PLASTIC BAG  
TO PROTECT FROM MOISTURE DURING STACKING TIME.

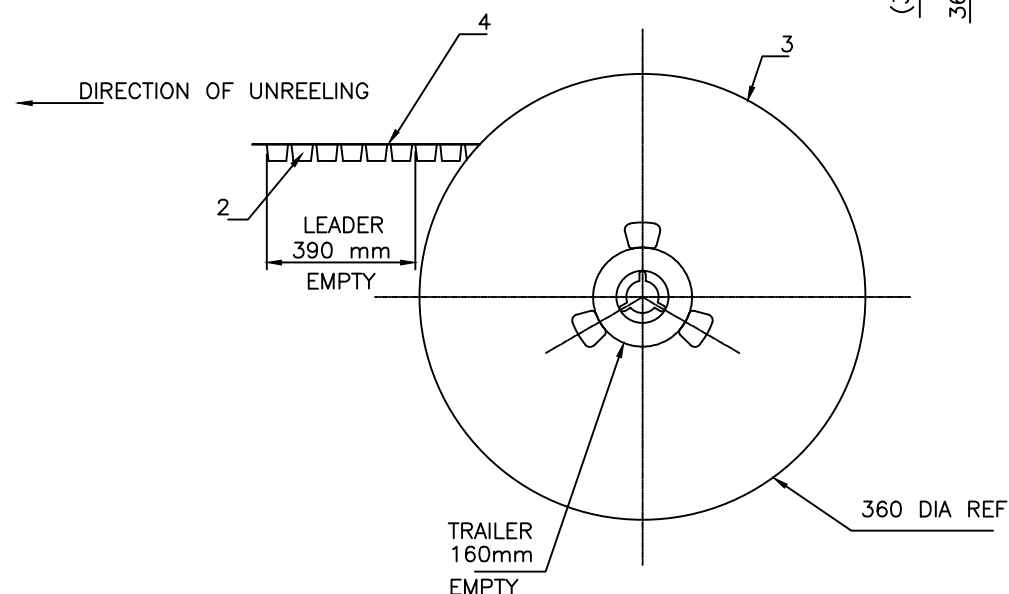
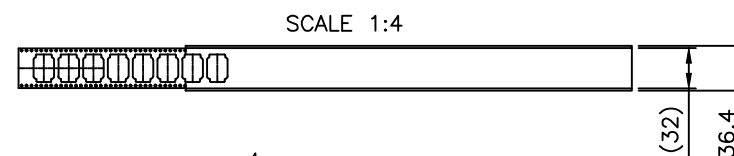
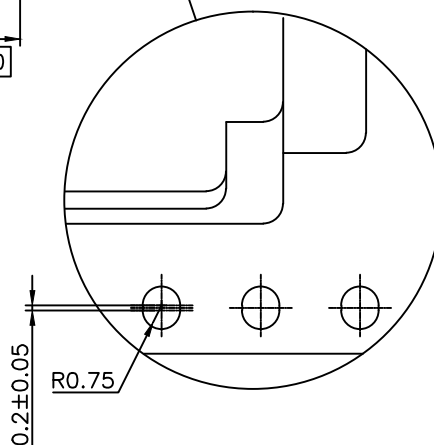
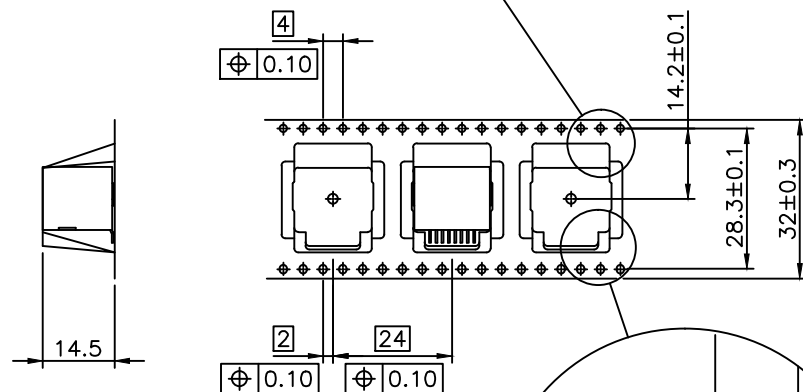
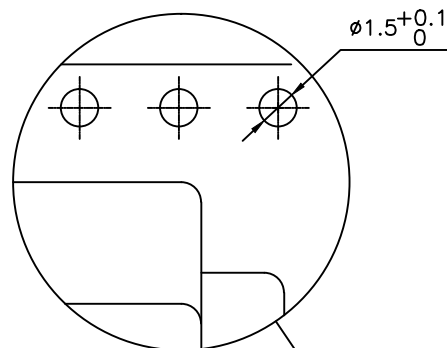


CUSTOMER COPY FOR REFERENCE ONLY

mat'l. code		surface		tolerance		projection		product family	
		ISO 1302		ISO 406		ISO 1101		MOD JACK	
ltr	ecr no	dr	date	tolerances unless otherwise specified		mm		title	
H	F06-0240	DLE	06.07.18	angles		±0.13		SMT RA JACK	
J	F09-0070	LSA	02.07.23	linear		mm		8 POS OUTSIDE	
K	B-15798	JFA	13.09.09	±2'		scale 2:1		dwg no	
L	F-21888	AMA	15.09.09	dr	D LEGRAND	03.01.27	FCJ	sheet 1 of 3	
				engr	F TISSERAND	03.01.27		73304	
F	F04-0363	DLE	04.10.18	chr	JF NOTTEAU	03.01.27		A3	
G	F05-0247	DLE	05.09.12	appd	F.TI	03.01.27		type	
sheet		revision	L	E	B			CUSTOMER Drawing	
index		sheet	1	2	3				

PRODUCT NUMBER  
SEE SHEET 1

LTR	PART NAME	QTY
1	PRODUCT	230
2	TAPE	1
3	REEL	1
4	COVER TAPE	1



1- IN ACCORDANCE WITH EIA-481 AND IEC 296-3

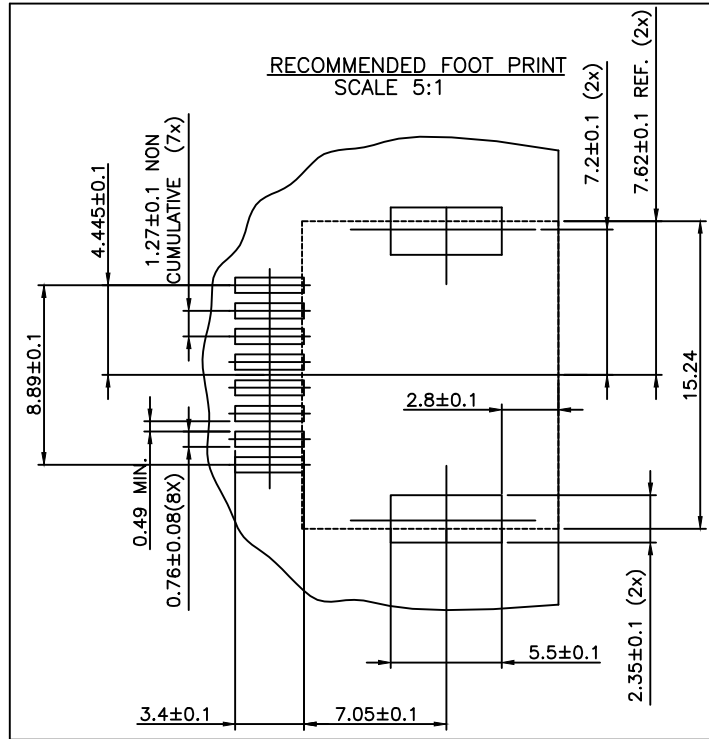
### CUSTOMER COPY FOR REFERENCE ONLY

mat'l. code		surface		tolerance		projection		product family	
		ISO 1302		ISO 406 ISO 1101		mm		MOD-JACK	
ltr	ecr no	dr	date	tolerances unless otherwise specified				title	
D	D80620	DLE	98.11.26	angles				SMT RA JACK	
E	F06-024Q	DLE	06.07.18	linear				8 POS. OUTSIDE	
						scale 2:1		dwg no	
						FCJ		73304	
								sheet 2 of 3	
								A3	
								type	
								CUSTOMER Drawing	
sheet index		revision sheet							






FCconnect.com

Copyright FCJ



## CUSTOMER COPY FOR REFERENCE ONLY

mat'l. code				surface <input checked="" type="checkbox"/> tolerance			projection		product family			
				ISO 1302 <input checked="" type="checkbox"/> ISO 406 ISO 1101					MOD JACK			
ltr	ecr no	dr	date	tolerances unless otherwise specified					title			
A	F04-0363	DLE	04.10.18	±0.13					SMT RA JACK			
B	F06-0240	DLE	06.07.18	angles	linear		scale 2:1		8 POS OUTSIDE			
				±2°								
				dr	D LEGRAND	04.10.18			dwg no		sheet 3 of -	size
				engr	P NIZZI	04.10.18			73304		A4	
				chr	D LEGRAND	04.10.18						
				appd	P.NZ	04.10.18						
sheet index		revision sheet							type CUSTOMER Drawing			

form: A4

# Mouser Electronics

Authorized Distributor

Click to View Pricing, Inventory, Delivery & Lifecycle Information:

[FCI / Amphenol:](#)

[73304-111LF](#) [73304-121LF](#) [73304-311LF](#) [73304-131LF](#)