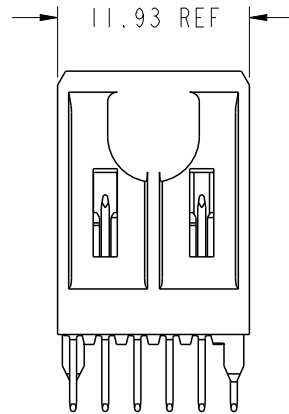
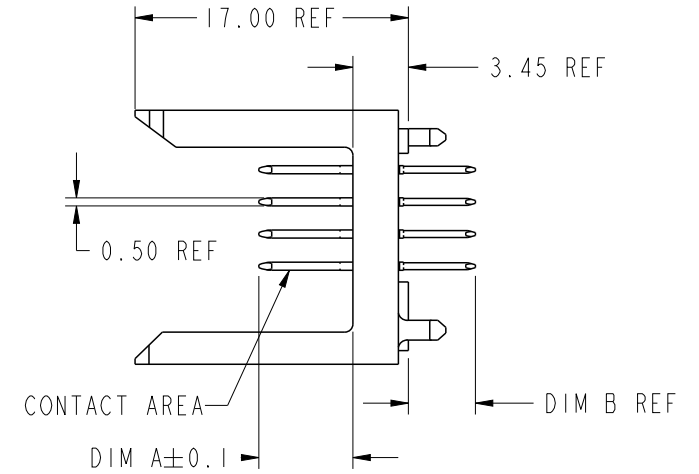
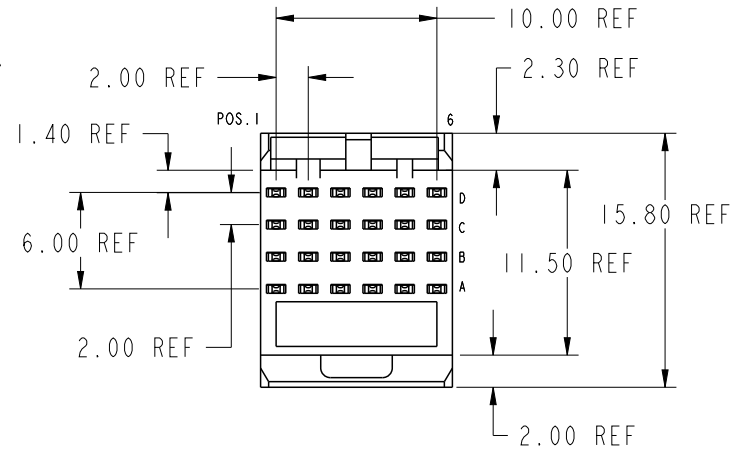


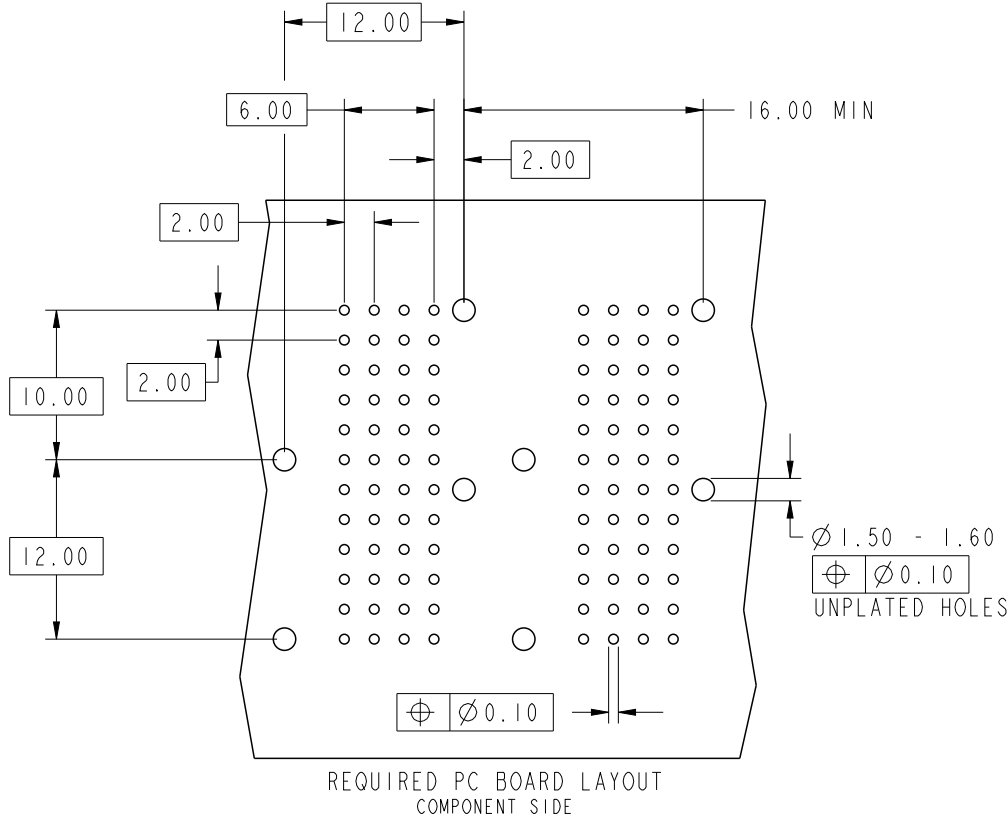
PRODUCT NUMBER
88951-XYX(L)LF

L REFER LUBRICATED (OPTIONAL) \triangle
SEE NOTE 3

X REFER PLATING PERFORMANCE \triangle
SEE NOTE 3



spec ref		dr Terran Huang		2010/07/09		projection 	MM 	size	A4	scale	21:10	
tolerance std		eng Rahul Mohan-M		2021/07/13				ecn no	ELX-I-41567-1			
ISO 406 ISO 1101		chr -		-				product family	XXXXX			
surface 3.2		appr Kuriakose, San		2021/08/17		rel level	Released					
ISO 1302		linear	0.X	±0.3		Amphenol FCi	part no				rev	
✓			0.XX	±0.13			METRAL SIGNAL HEADER				88951	AA
			0.XXX	±0.050			1 MOD. 4 ROW STB					
angular		0°	±2°		amphenol-icc.com	cat. no.	-			Product - Customer Drw	sheet 1 of 5	



KEY		
CODE	DIMENSIONS	
	DIM "A" MATE	DIM "B" TAIL
1	5.00	4.25
2	5.75	4.25
3	6.50	4.25
4	7.25	4.25
5	5.00	3.30
6	5.75	3.30
7	6.50	3.30
8	7.25	3.30
9	5.00	2.65
10	5.75	2.65
11	6.50	2.65
12	7.25	2.65
13	8.00	4.25

REQUIRED PC BOARD LAYOUT
COMPONENT SIDE

SEE PRINT 58351 FOR
ADDITIONAL PCB INFORMATION

spec ref		dr	Terran Huang	2010/07/09	projection 	MM 	size	A4	scale	21:10	
tolerance std		eng	Rahul Mohan-M	2021/07/13			ecn no	ELX-I-41567-1			
ISO 406 ISO 1101		chr	-	-				rel level	Released		
surface 3.2		appr	Kuriakose, San	2021/08/17	product family		XXXXX				
ISO 1302		TOLERANCES UNLESS OTHERWISE SPECIFIED		Amphenol FCI		title		METRAL SIGNAL HEADER		rev	AA
linear		0.X ±0.3		amphenol-icc.com		cat. no.		-		Product - Customer Drw	sheet 2 of 5
angular		0° ±2°		1 MOD. 4 ROW STB		dwg no		88951		STATUS:Released	

Amphenol FCI

© 2020 Amphenol Corporation

METRAL P/N ROW CONTACT CODE MOD. I 88951-X01LF D I I I I I I C I I I I I I B I I I I I I A I I I I I I							METRAL P/N ROW CONTACT CODE MOD. I 88951-X06LF D 2 2 2 2 2 2 C 2 2 2 2 2 2 B 2 2 2 2 2 2 A 2 2 2 2 2 2							METRAL P/N ROW CONTACT CODE MOD. I 88951-X11LF D 3 3 3 3 3 3 C I I I I I I B 3 3 3 3 3 3 A 3 3 3 3 3 3							METRAL P/N ROW CONTACT CODE MOD. I 88951-X17LF D 2 2 2 2 2 2 C 2 2 2 2 2 2 B 2 2 2 2 2 2 A 3 3 3 3 3 3							METRAL P/N ROW CONTACT CODE MOD. I 88951-X35LF D 7 7 7 7 7 7 C 7 7 7 7 7 7 B 7 7 7 7 7 7 A 7 7 7 7 7 7							METRAL P/N ROW CONTACT CODE MOD. I 88951-X40LF D 5 5 5 5 5 5 C 6 6 6 6 6 6 B 7 7 7 7 7 7 A 8 8 8 8 8 8						
METRAL P/N ROW CONTACT CODE MOD. I 88951-X02LF D I I I I I I C I I I I I I B I I I I I I A 3 3 3 3 3 3							METRAL P/N ROW CONTACT CODE MOD. I 88951-X07LF D 3 3 3 3 3 3 C 2 2 2 2 2 2 B 2 2 2 2 2 2 A I I I I I I							METRAL P/N ROW CONTACT CODE MOD. I 88951-X12LF D 4 4 4 4 4 4 C 3 3 3 3 3 3 B 2 2 2 2 2 2 A I I I I I I							METRAL P/N ROW CONTACT CODE MOD. I 88951-X31LF D 5 5 5 5 5 5 C 5 5 5 5 5 5 B 5 5 5 5 5 5 A 5 5 5 5 5 5							METRAL P/N ROW CONTACT CODE MOD. I 88951-X36LF D 6 6 6 6 6 6 C 6 6 6 6 6 6 B 6 6 6 6 6 6 A 6 6 6 6 6 6							METRAL P/N ROW CONTACT CODE MOD. I 88951-X41LF D 7 7 7 7 7 7 C 5 5 5 5 5 5 B 7 7 7 7 7 7 A 7 7 7 7 7 7						
METRAL P/N ROW CONTACT CODE MOD. I 88951-X03LF D 3 3 3 3 3 3 C 2 2 2 2 2 2 B 2 2 2 2 2 2 A 3 3 3 3 3 3							METRAL P/N ROW CONTACT CODE MOD. I 88951-X08LF D 3 3 3 3 3 3 C I I I I I I B I I I I I I A I I I I I I							METRAL P/N ROW CONTACT CODE MOD. I 88951-X13LF D I I I I I I C I I I I I I B 3 3 3 3 3 3 A I I I I I I							METRAL P/N ROW CONTACT CODE MOD. I 88951-X32LF D 5 5 5 5 5 5 C 5 5 5 5 5 5 B 5 5 5 5 5 5 A 7 7 7 7 7 7							METRAL P/N ROW CONTACT CODE MOD. I 88951-X37LF D 7 7 7 7 7 7 C 6 6 6 6 6 6 B 6 6 6 6 6 6 A 5 5 5 5 5 5							METRAL P/N ROW CONTACT CODE MOD. I 88951-X42LF D 8 8 8 8 8 8 C 7 7 7 7 7 7 B 6 6 6 6 6 6 A 5 5 5 5 5 5						
METRAL P/N ROW CONTACT CODE MOD. I 88951-X04LF D 4 4 4 4 4 4 C 3 3 3 3 3 3 B 3 3 3 3 3 3 A 4 4 4 4 4 4							METRAL P/N ROW CONTACT CODE MOD. I 88951-X09LF D 4 4 4 4 4 4 C 4 4 4 4 4 4 B 4 4 4 4 4 4 A 4 4 4 4 4 4							METRAL P/N ROW CONTACT CODE MOD. I 88951-X15LF D 2 2 2 2 2 2 C I I I I I I B 2 2 2 2 2 2 A I I I I I I							METRAL P/N ROW CONTACT CODE MOD. I 88951-X33LF D 7 7 7 7 7 7 C 6 6 6 6 6 6 B 6 6 6 6 6 6 A 7 7 7 7 7 7							METRAL P/N ROW CONTACT CODE MOD. I 88951-X38LF D 7 7 7 7 7 7 C 5 5 5 5 5 5 B 5 5 5 5 5 5 A 5 5 5 5 5 5							METRAL P/N ROW CONTACT CODE MOD. I 88951-X43LF D 5 5 5 5 5 5 C 5 5 5 5 5 5 B 7 7 7 7 7 7 A 5 5 5 5 5 5						
METRAL P/N ROW CONTACT CODE MOD. I 88951-X05LF D 3 3 3 3 3 3 C 3 3 3 3 3 3 B 3 3 3 3 3 3 A 3 3 3 3 3 3							METRAL P/N ROW CONTACT CODE MOD. I 88951-X10LF D I I I I I I C 2 2 2 2 2 2 B 3 3 3 3 3 3 A 4 4 4 4 4 4							METRAL P/N ROW CONTACT CODE MOD. I 88951-X16LF D 2 2 2 2 2 2 C 3 3 3 3 3 3 B 4 4 4 4 4 4 A 3 3 3 3 3 3							METRAL P/N ROW CONTACT CODE MOD. I 88951-X34LF D 8 8 8 8 8 8 C 7 7 7 7 7 7 B 7 7 7 7 7 7 A 8 8 8 8 8 8							METRAL P/N ROW CONTACT CODE MOD. I 88951-X39LF D 8 8 8 8 8 8 C 8 8 8 8 8 8 B 8 8 8 8 8 8 A 8 8 8 8 8 8							METRAL P/N ROW CONTACT CODE MOD. I 88951-X45LF D 6 6 6 6 6 6 C 5 5 5 5 5 5 B 6 6 6 6 6 6 A 5 5 5 5 5 5						

spec ref		dr	Terran Huang		2010/07/09	projection	size	A4	scale	21:10
tolerance std	TOLERANCES UNLESS OTHERWISE SPECIFIED	eng	Rahul Mohan-M		2021/07/13					
ISO 406		linear	chr			-	product family	XXXXX	rel level	Released
ISO 1101	0.X		±0.3		Amphenol FCI	METRAL SIGNAL HEADER				
surface 3.2	0.XX	±0.13		amphenol-icc.com			cat. no.	-	Product - Customer Drw	sheet 3 of 5
ISO 1302	angular	0°	±2°		I MOD. 4 ROW STB		XXXXX		AA	

Creo F114; ELX MC; AEC; REV F; 2020-12-21

METRAL P/N	ROW	CONTACT CODE MOD. I					METRAL P/N	ROW	CONTACT CODE MOD. I					METRAL P/N	ROW	CONTACT CODE MOD. I					METRAL P/N	ROW	CONTACT CODE MOD. I					METRAL P/N	ROW	CONTACT CODE MOD. I											
88951-X46LF	D	6	6	6	6	6	88951-X64LF	D	12	12	12	12	12	88951-X69LF	D	12	12	12	12	12	88951-X75LF	D	10	10	10	10	10	88951-X80LF	D	3	3	3	3	3	88951-X85LF	D	11	11	11	11	11
	C	7	7	7	7	7		C	11	11	11	11	11		C	12	12	12	12	12		C	9	9	9	9	9		C	3	3	3	3	3		C	11	11	11	11	11
	B	8	8	8	8	8		B	11	11	11	11	11		B	12	12	12	12	12		B	10	10	10	10	10		B	13	13	13	13	13		B	11	11	11	11	11
	A	7	7	7	7	7		A	12	12	12	12	12		A	12	12	12	12	12		A	9	9	9	9	9		A	3	3	3	3	3		A	11	11	11	11	11

spec ref		dr	Terran Huang	2010/07/09			size	A4	scale	2:10
tolerance std		eng	Rahul Mohan-M	2021/07/13			ecn no	ELX-I-41567-1		
TOLERANCES UNLESS OTHERWISE SPECIFIED ISO 406 ISO 1101		chr	-	-			rel level	Released		
		surface 3.2		appr	Kuriakose, San	2021/08/17	product family	XXXXX		
ISO 1302 		linear	0.X	±0.3		METRAL SIGNAL HEADER 1 MOD. 4 ROW STB	dwg no 88951	rev AA		
		angular	0°	±2°					cat. no.	-

NOTES.

1. FOR DIM A AND B SEE SHEET 2 AND UP.
2. MATERIAL : BODY : THERMOPLASTIC UL94-V0.
: CONTACT : COPPER ALLOY.
3. FOR PLATING PERFORMANCE REFER DRAWING # 10159408.
4. ALL PRODUCTS WITH PART NUMBERS SHOWN IN SUBSEQUENT TABLES WILL BE PACKED IN TUBES.
IF TRAY PACKAGING IS REQUIRED, A SUFFIX "P" WILL BE ADDED TO THE END OF THE PART NUMBER
EXAMPLE: XXXXX-XXXPLF.
5. PRODUCT SPECIFICATION : GS-12-180.
6. APPLICATION SPECIFICATION : BUS-20-074.
7. THE PRODUCTS MEETS THE EUROPEAN UNION DIRECTIVES AND OTHER COUNTRY REGULATIONS AS
DESCRIBED IN GS-47-0004.
8. ALL PRODUCTS WILL WITHSTAND EXPOSURE TO 260°C FOR 60 SECONDS IN A CONVENTION, INFRA-RED
OR VAPOUR PHASE REFLOW OVEN. THE Au CONTACT SURFACE OF THE CONTACTS SHALL BE EXPOSED
TO A MAXIMUM 140°C FOR NO LONGER THAN 15 SECONDS IN A WAVE SOLDER APPLICATION.
9. A \triangle SYMBOL WILL BE NEXT TO ANY DIMENSION , VIEW, OR NOTE WHICH HAS BEEN MODIFIED WITH
THE CURRENT DRAWING REVISION.

Amphenol
FCi

© 2020 Amphenol Corporation

spec ref		dr	Terran Huang	2010/07/09	projection 	MM 	size	A4	scale	21:10	
tolerance std ISO 406 ISO 1101	TOLERANCES UNLESS OTHERWISE SPECIFIED		eng	Rahul Mohan-M			2021/07/13	ecn no	ELX-I-41567-1		
			chr	-			-	rel level	Released		
surface 3.2 ISO 1302	linear	0.X	±0.3	appr	Kuriakose, San	2021/08/17	product family	XXXXX	rev		
		0.XX	±0.13	Amphenol FCi		title		METRAL SIGNAL HEADER		dwg no	88951
		0.XXX	±0.050								
	angular	0°	±2°	amphenol-icc.com						AA	

Mouser Electronics

Authorized Distributor

Click to View Pricing, Inventory, Delivery & Lifecycle Information:

[FCI / Amphenol:](#)

[88951-901](#) [88951-905LF](#) [88951-361LF](#) [88951-161](#) [88951-908](#)