

NOTE:

REFERENCE STANDARD IEC60169-11

I. ELECTRICAL PERFORMANCE -

NOMINAL IMPEDANCE : 50 ±2 Ω  
FREQUENCY RANGE : DC-3.0 GHz  
VSWR : 1.08 MAX.  
INSERTION LOSS : 0.05 dB MAX. (@ 3.0 GHz)  
P1M : -165 dBc MAX. (2x43dBm)  
INSULATION RESISTANCE : 5000 MΩ MIN.  
D.W.V : 2500 VRMS  
CONDUCTOR RESISTANCE : OUTER CONDUCTOR 0.5 mΩ MAX.  
INNER CONDUCTOR 1.0 mΩ MAX.

II. MECHANICAL PERFORMANCE

RETENTION : 4 N MIN.  
INNER CONDUCTOR TORQUE : 0.2 N-m  
MATING CYCLES : 500 MIN.

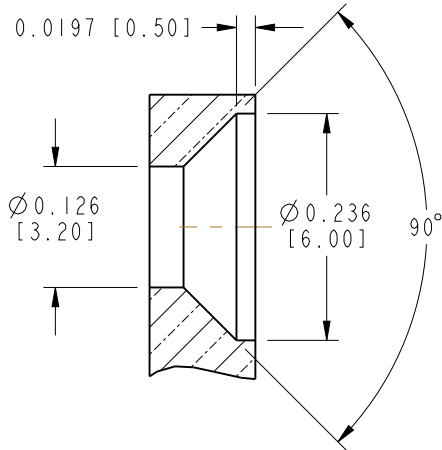
III. MATERIAL AND PLATING -

INNER CONDUCTOR : SPRING COPPER ALLOY, PLATING = Ag (5µm MIN.)  
OUTER CONDUCTOR : BRASS, PLATING = COPPER-TIN-ZINC (2µm MIN.)  
INSULATOR : PTFE

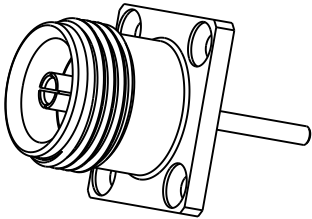
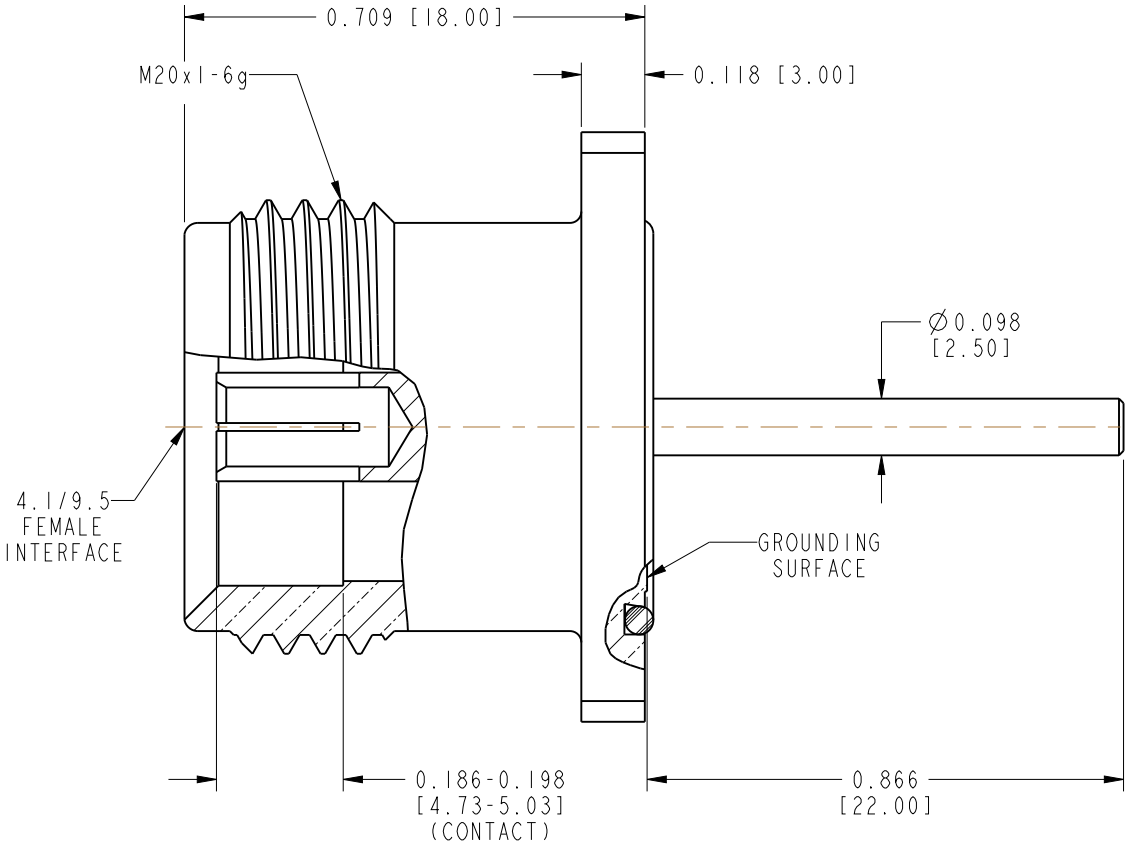
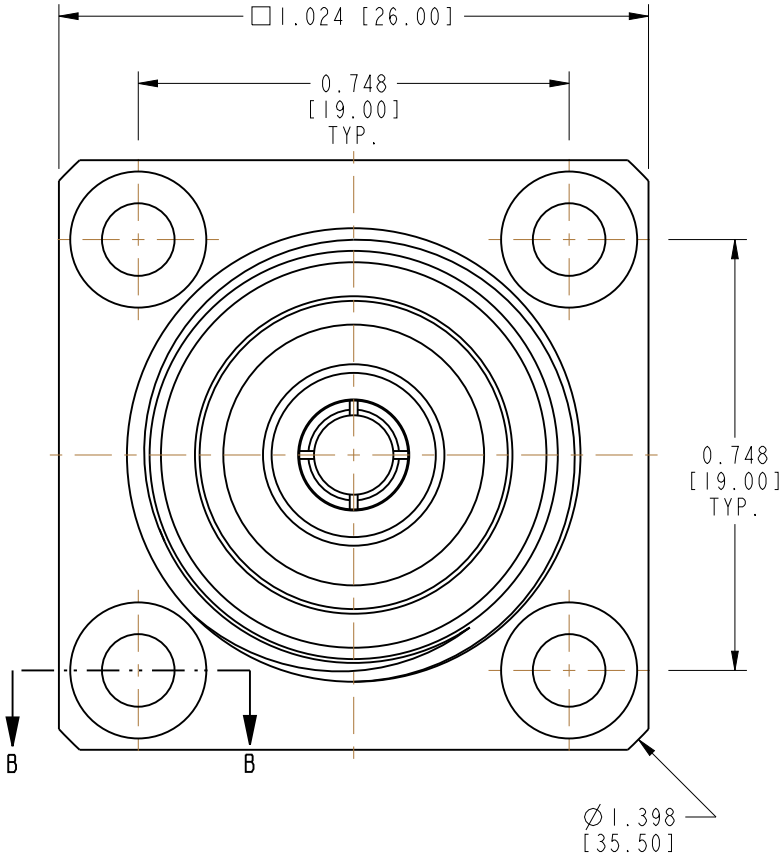
IV. ENVIRONMENTAL -

TEMP. RANGE : -40°C TO +85°C  
WEATHER STANDARD : IEC 60068 40/ 85/ 21  
THERMAL SHOCK : MIL-STD 202, METHOD 107, CONDITION B  
VIBRATION : MIL-STD 202, METHOD 204, CONDITION B  
SHOCK : MIL-STD 202, METHOD 213, CONDITION I  
WATERPROOFING STANDARD : IP 67

V. ROHS COMPLIANT



SECTION B-B  
SCALE 5.000



SCALE 1.000

CUSTOMER OUTLINE DRAWING

ALL OTHER SHEETS ARE FOR INTERNAL USE ONLY

UNLESS OTHERWISE SPECIFIED, DIMENSIONS ARE IN INCHES AND TOLERANCES ARE: 2 PLACE DECIMAL 3 PLACE DECIMAL ±.015 (0,381 mm) ±.005 (0,127 mm) ANGLES ± 1°	MATERIAL  SEE NOTES	DRAWN A ARUN PRABU	DATE 12-Sep-13	TITLE 4.1/9.5 FEMALE PANEL	Amphenol Connex		
		ENGINEER A ARUN PRABU	DATE 12-Sep-13				
	REFERENCE	APPROVED B.C. GLEISSNER	DATE 03-Oct-13				
		CAD FILE		DWG SIZE B	DRAWING NO. 332101		REV A

# Mouser Electronics

Authorized Distributor

Click to View Pricing, Inventory, Delivery & Lifecycle Information:

[Amphenol:](#)

[332101](#)