
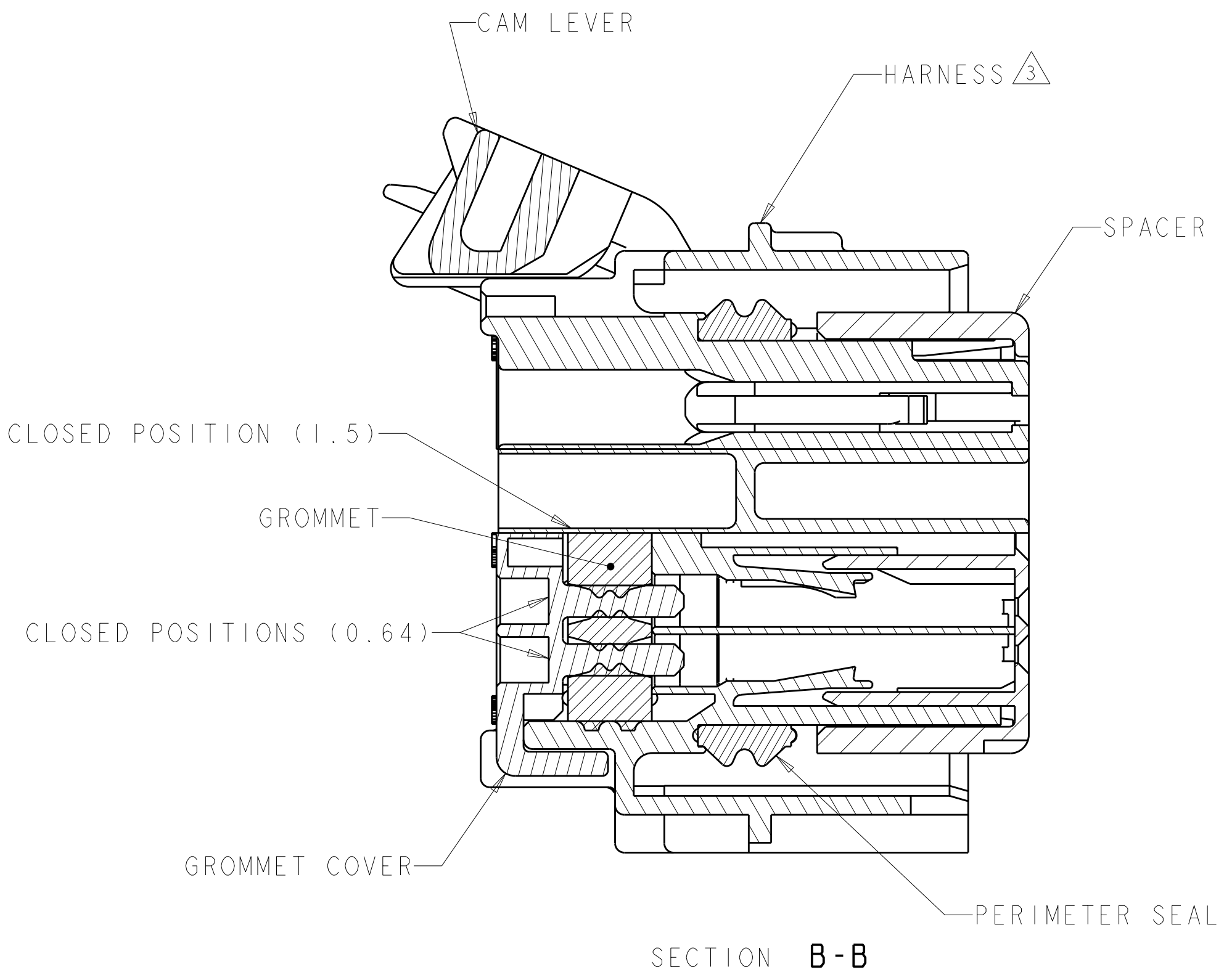
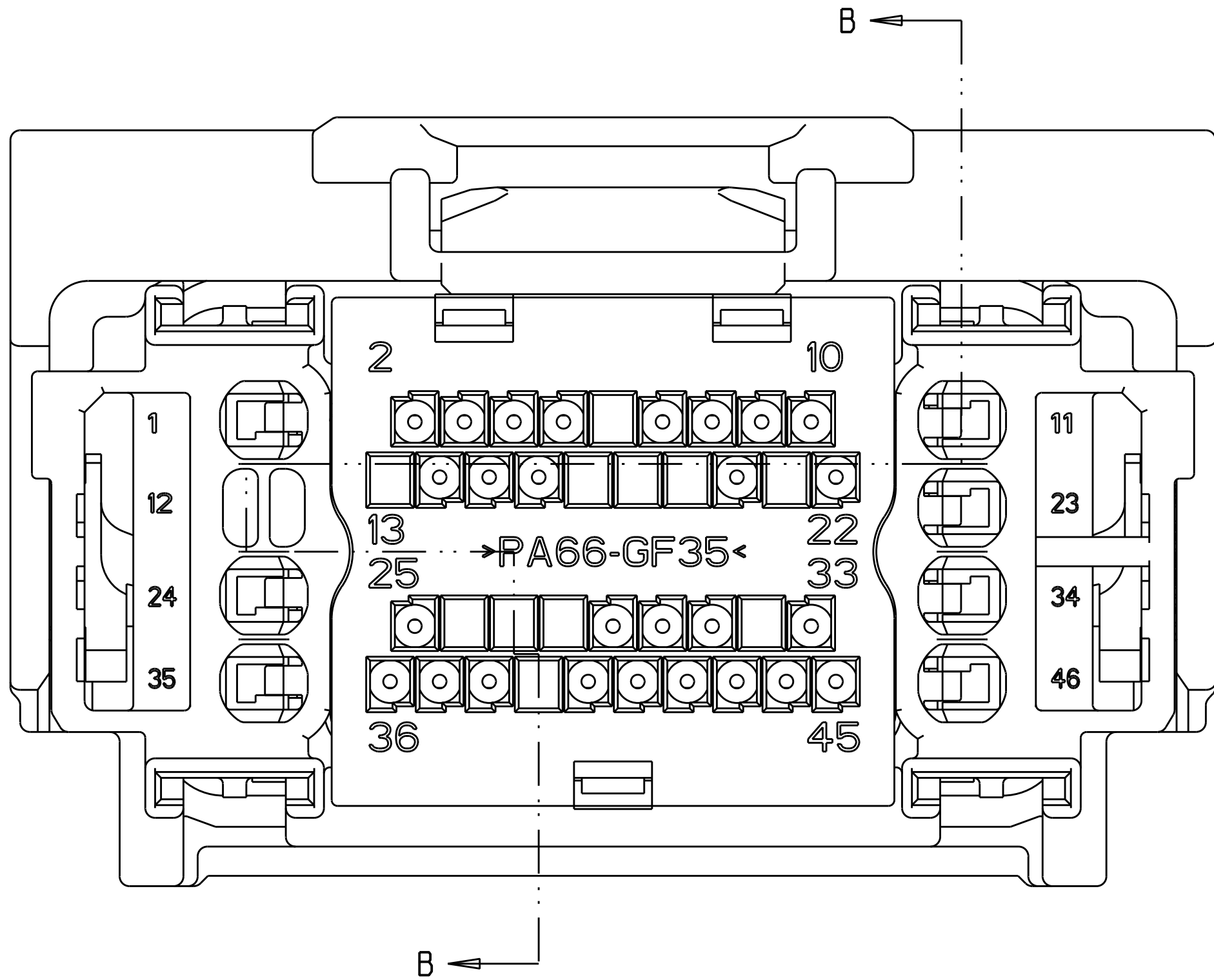
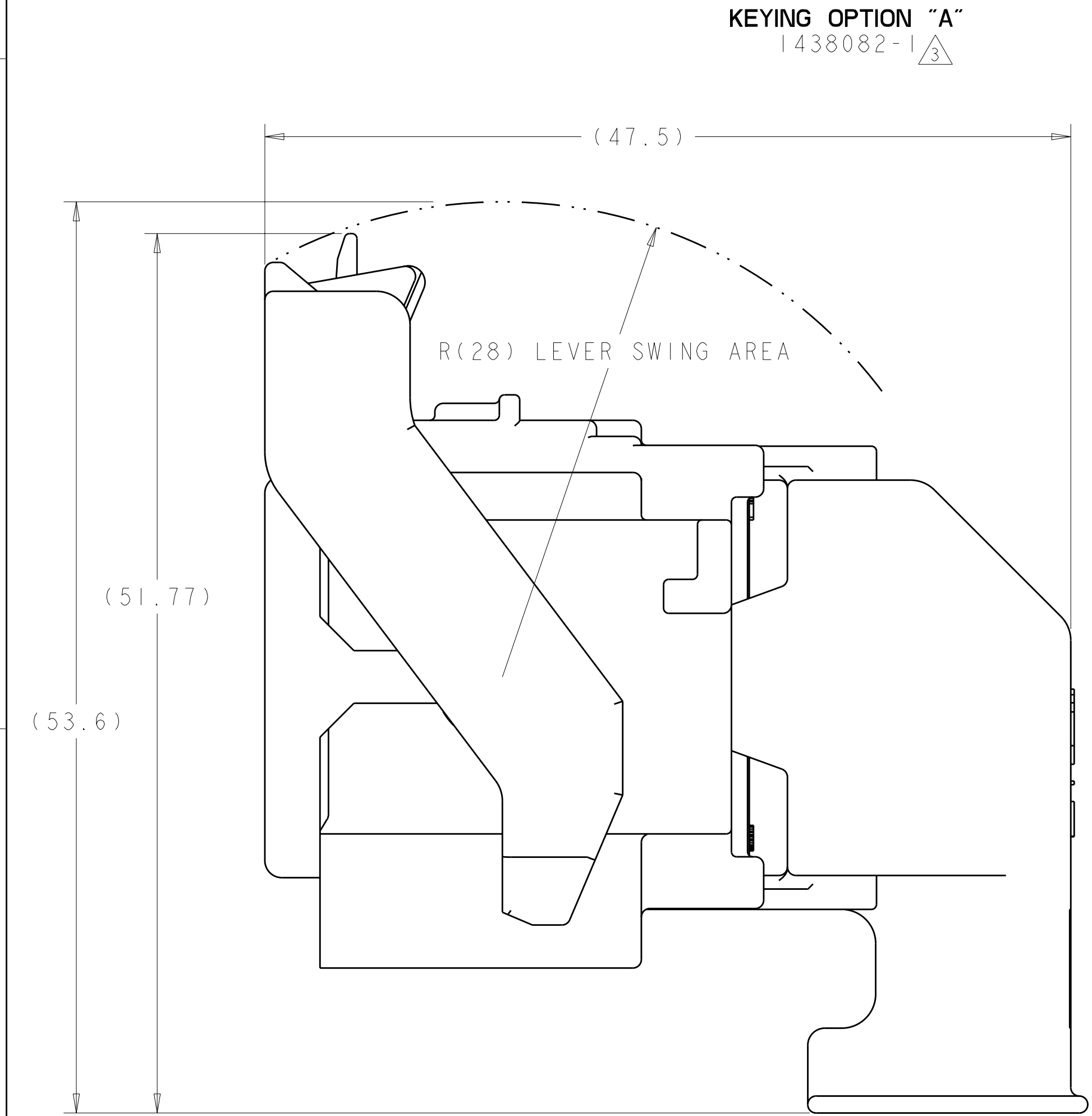


SCALE 1 : 1

KEYING OPTION "B"  
1438082-2 




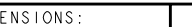
△ MATERIAL:  
HARNES - 35% GLASS FILLED PA66, BLACK  
ALT MAT'L: HARNES - 30% GLASS FILLED sPS, BLACK  
SPACER - 40% GLASS FILLED PPS+PA66, RED  
ALT MAT'L: 30% GLASS FILLED sPS, RED  
ALT MAT'L: 35% GLASS FILLED PA66, RED  
COVER - 35% GLASS FILLED PA66, BLACK  
ALT MAT'L: COVER - 30% GLASS FILLED LCP, BLACK  
CAM LEVER - 35% GLASS FILLED NYLON, GRAY  
GROMMET - SILICONE, BROWN  
PERIMETER SEAL - SILICONE, GREEN

2. CAM LEVER AND SPACER ARE SHIPPED IN PRE-LATCH POSITION.

③ SEE PINOUT CHART ON SHEETS 2, 3 AND 4 FOR CLOSED CIRCUIT CONFIGURATIONS.

④ CAVITIES WITH A NUMERIC SYMBOL INDICATES CLOSED TERMINAL LOCATIONS.  
BLANK CAVITIES INDICATE OPEN TERMINAL HOLE LOCATIONS.

SHOWN WITH CAM LEVER AND SPACER  
IN LOADED POSITION WITH  
OPTIONAL WIRESHIELD

<small>1. THIS DRAWING IS THE PROPERTY OF TYCO ELECTRONICS CORPORATION. IT IS TO BE USED FOR THE MANUFACTURE OF THE PARTS SPECIFIED HEREON. IT IS NOT TO BE REPRODUCED OR COPIED FOR ANY OTHER PURPOSE WITHOUT THE WRITTEN PERMISSION OF TYCO ELECTRONICS CORPORATION.</small>		<small>DWN</small> <b>01AUG2003</b>		 <b>Tyco Electronics</b>		Tyco Electronics Harrisburg, PA 17105-3608	
<small>DIMENSIONS:</small> mm		<small>TOLERANCES UNLESS OTHERWISE SPECIFIED:</small> 0 P L C ± .3 1 P L C ± .3 2 P L C ± .10 3 P L C ± .3 4 P L C ± .3 ANGLE ± 30°		<small>CUR</small> <b>01AUG2003</b>		<small>NAME</small> 46 WAY PCM CONNECTOR HARNESS ASSEMBLY	
		<small>APPR</small> <b>01AUG2003</b>		<small>PRODUCT SPEC</small> -		<small>SIZE</small> A	
<small>MATERIAL</small> SEE TABLE		<small>APPLICATION SPEC</small> -		<small>WEIGHT</small> -		<small>CAGE CODE</small> 00779	
<small>FINISH</small> SEE TABLE		<small>CUSTOMER DRAWING</small> -		<small>DRAWING NO</small> C-1438082		<small>RESTRICTED TO</small> -	
				<small>SCALE</small> 4:1		<small>SHEET</small> 1 of 5	
				<small>REV</small> 1		1	

LOC	DIST	REVISIONS					
FX	00	P	LTR	DESCRIPTION	DATE	DWN	APVD
			-	SEE SHEET 1	-	-	-

	45	43			39	37	36	35			31					24					18	17	16		14	13	12			9		7	6				2	1	9-1438082-7	2LIT-14A464-SD-051														
			42																	20	18			15	14			11	10		8	7			4	3	2	1	9-1438082-6	2LIT-14A464-SD-050														
			42																	20	18							11	10									1	9-1438082-5	2LIT-14A464-SD-049														
			42																	20	18							11	10									2	1	9-1438082-4	2LIT-14A464-SD-048													
								35						27																										9-1438082-3	2LIT-14A464-SD-047													
	45	43					36	35			32	31				24		21		19	18	17	16		14	12							7	6				1	9-1438082-1	2LIT-14A464-SD-046														
46											31																														9-1438082-0	2LIT-14A464-SD-045												
											31					24							16										8					3	2	8-1438082-9	2LIT-14A464-SD-044													
														27																											8-1438082-8	2LIT-14A464-SD-043												
	45	44	43	42		40		38	37	36		33	31		29																		9	8				3			8-1438082-7	2LIT-14A464-SD-042												
	45	44	43	42		40		38	37	36		33	31		29																			9	8					2		8-1438082-6	2LIT-14A464-SD-041											
46												31																							9			6			3		8-1438082-5	2LIT-14A464-SD-040										
			43	42			39		37											20	19	18							11	10	9								2	1	8-1438082-4	2LIT-14A464-SD-039												
			43									31		29								18																				8-1438082-3	2LIT-14A464-SD-038											
	45	44	43	42		40		38	37	36		33	31		29																			9	8					2		8-1438082-0	2LIT-14A464-SD-037											
	45		43							36	35					31							16		14	12								7	6				2	1	7-1438082-9	2LIT-14A464-SD-036												
	45		43							36	35					31							16		14	12								7	6				2	1	7-1438082-8	2LIT-14A464-SD-035												
			43	42			39	38	37				32										19	18	17	16				10	9											7-1438082-5	2LIT-14A464-SD-034											
	45	44	43	42		40		38	37	36		33	31		29																			9	8				6		2		7-1438082-4	2LIT-14A464-SD-033										
	45	44	43	42		40		38	37	36		33	31																						9	8				6		2		7-1438082-3	2LIT-14A464-SD-032									
						40								29																													6-1438082-6	2LIT-14A464-SD-031										
																																												6-1438082-3	2LIT-14A464-SD-030									
																																												6-1438082-2	2LIT-14A464-SD-029									
																																												6-1438082-1	2LIT-14A464-SD-028									
																																														5-1438082-6	2LIT-14A464-SD-027							
																																														5-1438082-5	2LIT-14A464-SD-026							
																																														5-1438082-2	2LIT-14A464-SD-025							
			43	42			39		37																																				5-1438082-0	2LIT-14A464-SD-024								
			42																																										4-1438082-9	2LIT-14A464-SD-023								
			43	42			39		37																																				4-1438082-8	2LIT-14A464-SD-022								
			42																																											4-1438082-7	2LIT-14A464-SD-021							
			43	42			39		37																																					4-1438082-2	2LIT-14A464-SD-020							
	45	43						36	35			31																																			4-1438082-0	2LIT-14A464-SD-019						
			43	42			39		37																																					3-1438082-8	2LIT-14A464-SD-018							
			42																																												3-1438082-7	2LIT-14A464-SD-017						
			43	42			39		37																																							3-1438082-6	2LIT-14A464-SD-016					
			42																																												3-1438082-5	2LIT-14A464-SD-015						
	45	43				39		37	36	35			31																																			3-1438082-4	2LIT-14A464-SD-014					
	45	43				39		37	36	35		33	31																																			3-1438082-3	2LIT-14A464-SD-013					
	45	43							36	35			31																																					3-1438082-2	2LIT-14A464-SD-012			
			42																																																3-1438082-1	2LIT-14A464-SD-011		
			43	42			39		37																																										3-1438082-0	2LIT-14A464-SD-010		
			42																																																		2-1438082-9	2LIT-14A464-SD-009
			43	42		</																																																

LOC	DIST	REVISIONS					
FX	00	P	LTR	DESCRIPTION	DATE	DWN	APVD
		-		SEE SHEET 1	-	-	-

		44							35		32							22								12		9	7	6				1	6-1438735-7	2LIT-14A464-SD-086																
		44							35		32															12		9	7	6				1	6-1438735-3	2LIT-14A464-SD-085																
									35																											6-1438735-2	2LIT-14A464-SD-084															
			43	42		40	39		37				29					20	18			15	14			11	10	9	8	7			4	3	1	6-1438735-1	2LIT-14A464-SD-083															
45		43						38		36			31				25	24						18	17	16		14	12				7	6		2	1	5-1438735-0	2LIT-14A464-SD-082													
45		43						38		36			31				25	24								16	14	12				7	6			2	1	4-1438735-9	2LIT-14A464-SD-081													
45		43						38		36			32	31			25	24		21		19	18	17	16		14	12				7	6			1	4-1438735-8	2LIT-14A464-SD-080														
45		43						39	38	37	36			31			25	24						18	17	16		14	13	12			9	7	6		2	1	4-1438735-7	2LIT-14A464-SD-079												
				42																20		18				13	11	10								2	1	3-1438735-8	2LIT-14A464-SD-078													
				42																20		18				13	11	10									1	3-1438735-7	2LIT-14A464-SD-077													
45		43						39	38	37	36			31			25	24		21	20	19	18	17			14	13	12			9					2	1	3-1438735-6	2LIT-14A464-SD-076												
45		43							38		36			31			25	24		21	20	19	18	17			14	12									2	1	3-1438735-5	2LIT-14A464-SD-075												
			43	42			40	39		37				29									20	18			15	14			11	10	9	8	7			4	3	2	1	3-1438735-3	2LIT-14A464-SD-074									
45		43						39	38	37	36			31			25	24				20	19	18	17			14	13	12			9					2	1	3-1438735-2	2LIT-14A464-SD-073											
45		43							38		36			31			25	24		21	20	19	18	17	16		14	12				7					2	1	3-1438735-1	2LIT-14A464-SD-072												
45		43						39	38	37	36			31			25	24		21	20	19	18	17	16		14	13	12			9	7					2	1	3-1438735-0	2LIT-14A464-SD-071											
45		43							38		36			31			25	24		21	20	19			16		14	12				7						2	1	2-1438735-9	2LIT-14A464-SD-070											
45		43						39	38	37	36			31			25	24		21	20	19			16		14	13	12			9	7					2	1	2-1438735-8	2LIT-14A464-SD-069											
45		43							38		36			31			25	24				20	19	18	17			14	12									2	1	2-1438735-6	2LIT-14A464-SD-068											
											33																13										6	5				2	1	2-1438735-5	2LIT-14A464-SD-067							
45	44	43	42					40			38	37	36		33	31				24	22	21	20		18	17	16	15				9	8						2	1	2-1438735-4	2LIT-14A464-SD-066										
			43												31		29								18							8								2	1	2-1438735-1	2LIT-14A464-SD-065									
45		43							38		36	35			31				25	24		21				16	14	12				7	6							2	1	2-1438735-0	2LIT-14A464-SD-064									
45		43						39	38	37	36	35			31				25	24					18	17	16		14	13	12			9	7	6					2	1	1-1438735-9	2LIT-14A464-SD-063								
45		43							38		36	35			32	31				25	24		21		19	18	17	16		14	12				7	6					1	1-1438735-8	2LIT-14A464-SD-062									
45		43							38		36	35			31				25	24						16	14	12				7	6						2	1	1-1438735-7	2LIT-14A464-SD-061										
45		43							38		36	35			31				25	24		21		19		16	14	12				7	6						2	1	1-1438735-6	2LIT-14A464-SD-060										
45		43							38		36	35			31				25	24					18	17	16		14	12				7	6					2	1	1-1438735-5	2LIT-14A464-SD-059									
45		43						39	38	37	36	35			31				25	24		21		19	18	17	16		14	13	12			9	7	6				2	1	1-1438735-4	2LIT-14A464-SD-058									
45		43							38		36	35			31				25	24		21		19	18	17	16		14	12				7	6					2	1	1-1438735-3	2LIT-14A464-SD-057									
				42							37											20		18			15	14		11	10	9	8	7			4	3	2	1	1-1438735-2	2LIT-14A464-SD-056										
45		43									36	35			31				24			21		19		16	14	12					7	6						1	1-1438735-1	2LIT-14A464-SD-055										
											35							27																					3				1-1438735-0	2LIT-14A464-SD-054								
				43										31		29									18							9	8							2			1438735-9	2LIT-14A464-SD-053								
											35							27																7									1438735-8	2LIT-14A464-SD-052								
46	45	44	43	42	41	40	39	38	37	36	35	34	33	32	31	30	29	28	27	26	25	24	23	22	21	20	19	18	17	16	15	14	13	12	11	10	9	8	7	6	5	4	3	2	1		PART NUMBER	FORD PART NUMBER				
TERMINAL HOLE POSITION																																																				
PIN-OUT CHART KEYING OPTION "A"																																																				

THIS DRAWING IS UNPUBLISHED. RELEASED FOR PUBLICATION 20		DWN R. VESTAL 01AUG2003		Tyco Electronics Harrisburg, PA 17105-3608	
CHK D. STRAUSSER 01AUG2003		NAME		46 WAY PCM CONNECTOR HARNESS ASSEMBLY	
APVD D. STRAUSSER 01AUG2003		PRODUCT SPEC		SIZE CAGE CODE DRAWING NO	
APPLICATION SPEC		WEIGHT		RESTRICTED TO	
CUSTOMER DRAWING		SCALE 4:1		SHEET 3 OF 5	

DIMENSIONS:

mm

MATERIAL

-

TOLERANCES UNLESS OTHERWISE SPECIFIED:

9 PLC ±.3

1 PLC ±0.10

5 PLC ±

4 PLC ±

ANGLES ±°

FINISH

-





# Mouser Electronics

Authorized Distributor

Click to View Pricing, Inventory, Delivery & Lifecycle Information:

[TE Connectivity:](#)

[5-1438082-4](#)