

Signal lamps with integrated neon lamp - 7 mm, solder terminals, 230 V, yellow lens**1.69.511.059/1402****General information**

Form of lens	round
Color of lens	transparent yellow
Diameter of collar	8.5

Dimensions

Overall height	5 mm
Mounting depth	27.5 mm
Mounting hole	7 mm

Mechanical design

Mounting	pressing into hole
Terminals	solder terminals
Lamp socket	no
Lamp	neon lamp

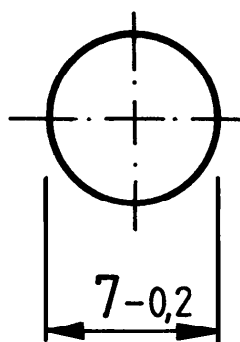
Electrical characteristics

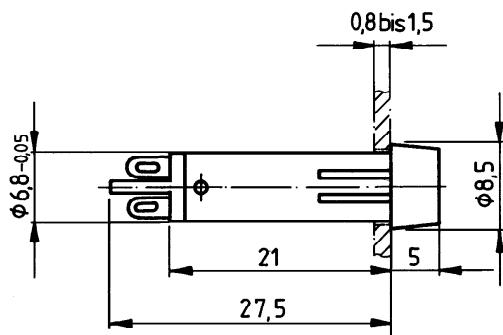
Voltage limit max.	230 V
--------------------	-------

Other specifications

Degree of protection from front side	IP40 (DIN EN 60529)
Weight	0.87 g
ROHS compliant	yes
REACH compliant	yes

Mounting hole





Mouser Electronics

Authorized Distributor

Click to View Pricing, Inventory, Delivery & Lifecycle Information:

[RAFI:](#)

[1.69.511.059/1402](#)